

DUE115UPK(DC)
DUE115UPE(AC)



Reduce
water

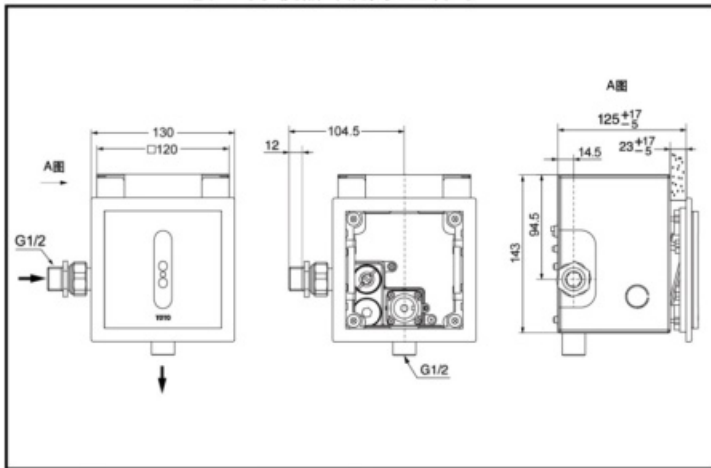


Auto
Functions

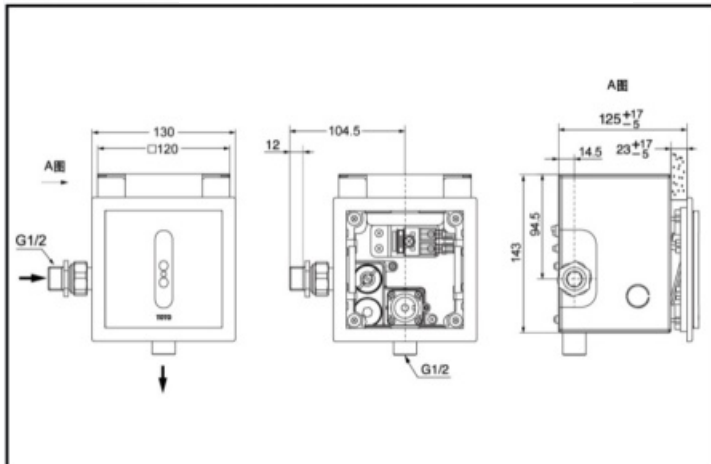
FEATURES

- In-wall resin panels.
- Touchless sensing operation.
- AC and DC two types available.

DUE115UPK In-wall Sensor Urinal Flush Valve



DUE115UPE In-wall Sensor Urinal Flush Valve



SPECIFICS

Size: 130*130mm

Water Supply:

0.1MPa(dynamic pressure) ~
0.75MPa(static pressure)

Environment Temperature:

0~55°C

Flush Volume: 2~3L

Water efficiency grade :

Grade 2

Power: DUE115UPK(DC)

DUE115UPE(AC)

Sensing Distance:

Within 800mm in front of the
sensor