

DUE114UPK(DC)
DUE114UPE(AC)

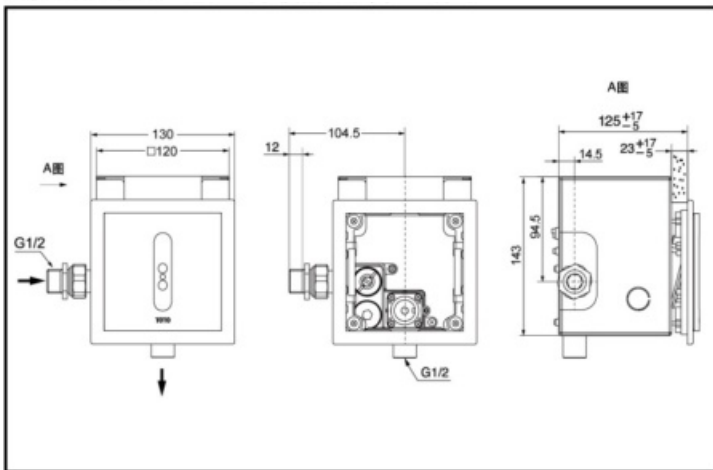


Reduce
water

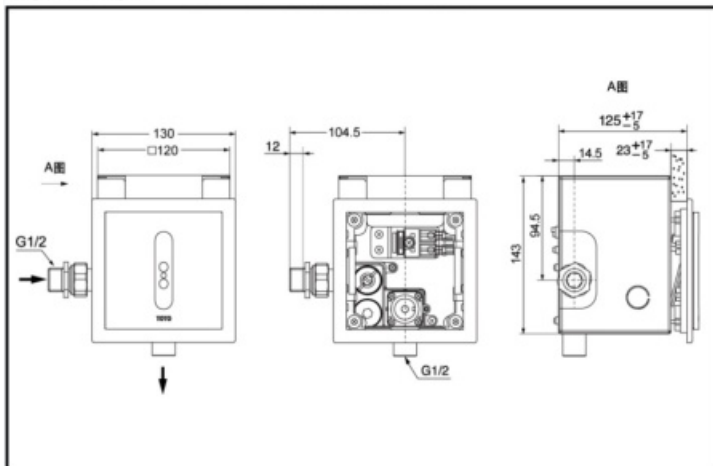


Auto
Functions

DUE114UPK In-wall Sensor Urinal Flush Valve



DUE114UPI In-wall Sensor Urinal Flush Valve



FEATURES

- In-wall resin panels.
- Touchless sensing operation.
- AC and DC two types available.

SPECIFICS

Size: 130*130mm

Water Supply:

0.05MPa(dynamic pressure) ~ 0.75MPa(static pressure)

Environment Temperature:

1~55℃

Water Use: ≤1.9L

Power: DUE114UPK(DC)

DUE114UPE(AC)

Sensing Distance:

Within 800mm in front of the sensor