

DUE114UK (DC)
DUE114UE (AC)

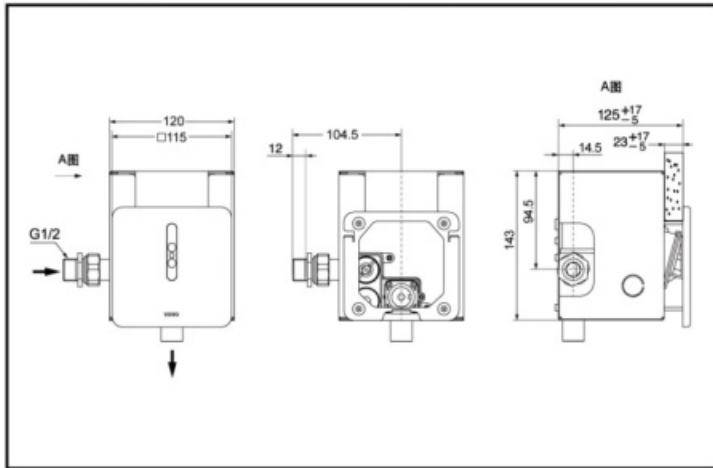


Reduce
water

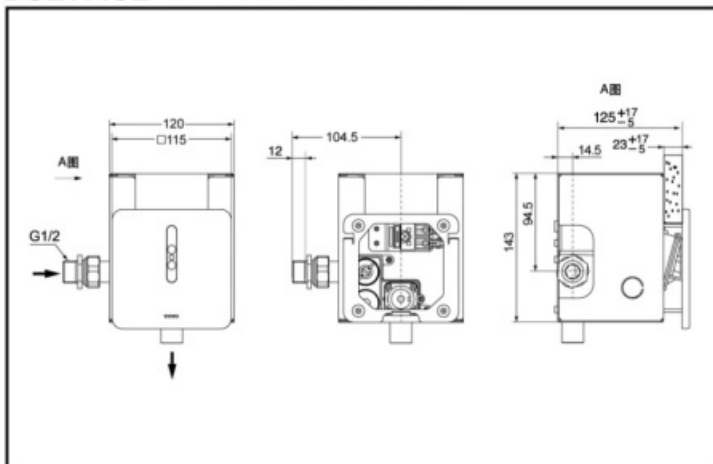


Auto
Functions

DUE114UK In-wall Sensor Urinal Flush Valve



DUE114UE In-wall Sensor Urinal Flush Valve



FEATURES

- In-wall resin panels.
- Touchless sensing operation.
- AC and DC two types available.

SPECIFICS

Size: 115*115mm

Water Supply:

0.05MPa(dynamic pressure) ~ 0.75MPa(static pressure)

Environment Temperature:

1~55°C

Water Use: ≤1.9L

Power: DUE114UK (DC)

DUE114UE (AC)

Sensing Distance:

Within 800mm in front of the sensor