

DUE113UPK(DC)  
DUE113UPE(AC)

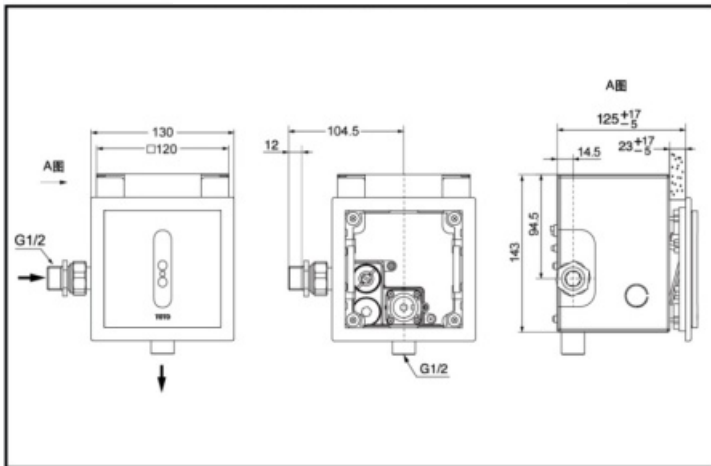


Reduce  
water

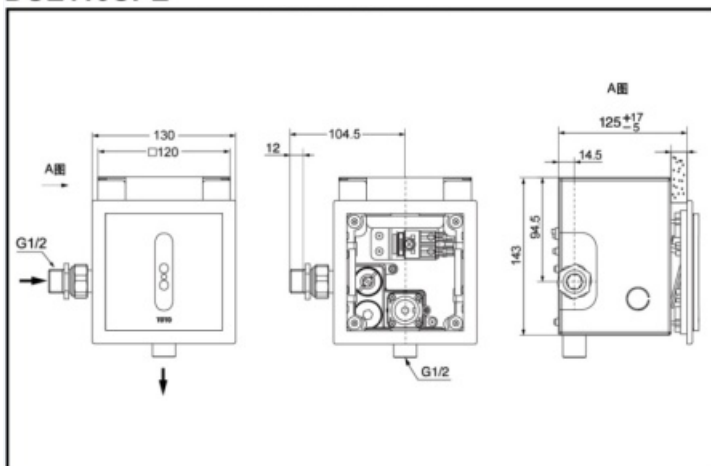


Auto  
Functions

#### DUE113UPK In-wall Sensor Urinal Flush Valve



#### DUE113UPE In-wall Sensor Urinal Flush Valve



### FEATURES

- In-wall resin panels.
- Touchless sensing operation.
- AC and DC two types available.

### SPECIFICS

Size: 130\*130mm

Water Supply:

0.1MPa(dynamic pressure) ~  
0.75MPa(static pressure)

Environment Temperature:

0~55°C

Flush Volume: 0.3~0.47L

Water efficiency grade :

Grade 1

Power: DUE113UPK(DC)

DUE113UPE(AC)

Sensing Distance:

Within 800mm in front of the  
sensor