

TOTO

目录 Catalog

注意事项 Cautions	1
简易故障判断及处理方式 Self diagnosis and troubleshooting	2
安装说明 Installation instructions	3

自动感应隐藏式水箱说明书 INSTRUCTION FOR ELECTIRC CONCEALED CISTERN

产品型号：
WH090、WH090R（系列）、WH090S（系列）
WH090RUD
PRODUCT MODELS:
WH090、WH090R (SERIES)、WH090S (SERIES)
WH090RUD

执行标准：GB 26730-2011
STANDARDS: GB 26730-2011

请将说明书保留备用
PLEASE KEEP THE INSTRUCTION MANUAL
FOR LATER USE

TOTO

自动感应隐藏式水箱说明书 INSTRUCTION FOR ELECTIRC CONCEALED CISTERN

注意事项 Cautions

- ⚠ **提示：** 表示如果无视此标志而错误理解、操作时可能发生误解、危害人体及损坏物品的事件。
- ⚠ **Remind:** If there is no sign of this ,it will lead to faulty understanding、misunderstanding occurred during operation、incidents of harming the human body or damaging goods.

- ⚠ **重要提示：**
1. 自动感应隐藏式水箱功能：蓄水、进排水阀容器，使用功能体现在自动感应隐藏式水箱工作面板说明书中；
 2. 此说明书只提供自动感应隐藏式水箱安装相关内容。
 3. 在澳大利亚地区安装时请遵循AS/NZS 3500系列标准或者当地标准。

- ⚠ **Important remind:**
- 1.Manual concealed cistern function :storage water、inlet and outlet calve vessel, The function reflected in the electirc concealed cistern instructions.
 - 2.This instruction only support the electirc concealed cistern construction-related content.
 - 3.For Australia, Installation to be in accordance with AS/NZS 3500 series of Standards and/or local standards.

清洁、废物处理 Cleaning and waste disposal

- 1、请使用清水或稀释的中性清洁剂（如洗洁精等）擦拭和清洁水箱面板，杜绝用腐蚀性强的清洁剂（如：去污粉、涂料稀释剂、苯等）或铁丝球进行擦拭，以免腐蚀并破坏面板的美观。
Use water or dilute mild detergent (such as detergent) to scrub and clean the panel, Never use the strong corrosive detergent(such as cleanser、paint thinner、benzene and so on) or wire ball to scrub , and to avoid the appearance of the panel being corroded or broken.
- 2、如果您需要废弃本产品，请勿将其作为一般生活垃圾处理，请依照法规经由独立的回收体系进行合适的处理、恢复和回收。
If you need to discard this product, please don't use it as a general life garbage disposal,Please in accordance with the laws and regulations by the recycling system of independent proper treatment, recovery and recycling.

扫描二维码，
服务预约，方便快捷



合格证

本品经检查判定合格
执行标准：GB26730-2011
产品名称：见包装箱上的标签
产品型号：见包装箱上的标签
检验日期：见包装箱上的标签
检 验 员：QC001
制 造 商：
厦门和利多卫浴科技有限公司
厂 址：
厦门海沧区霞飞东路2号



* 东陶（中国）有限公司
售后服务全国免费电话：800-820-9787
手机用户：400-820-9787
TOTO (CHINA) CO., LTD.
After Service Free Tel: 800-820-9787
Mobile telephone:400-820-9787

* 制造商：厦门和利多卫浴科技有限公司
地址：厦门海沧区霞飞东路2号
CONSTRUCTOR: VORETO (XIAMEN) PLUMBING
TECHNOLOGY CO.,LTD.
Add: No.2, Xiafei East Road, Haicang District, Xiamen

简易故障判断及处理方法

Self diagnosis and troubleshooting

⚠️ 温馨提示:

以下表格的问题点的处理方法中有注明（针对用户）的，用户可以参照自行解决。如果解决不了，严禁未经指定的非专业人士进行自行拆解和维修，需及时联系相应的专业人士解决，避免问题扩大化或产生不必要的麻烦和损失。

⚠️ Warm reminder:

Users can handle with problems by self in accordance with the table if the solution has marked out for users. non-professionals are baned on disassembling and repairing.please contact with the corresponding professionals to solve in case of magnify the problem or cause loss.

常见故障	原因	处理方法
水箱无法进水	1、入户总进水开关未开启或停水。	1、打开进水开关或联系物业解决（针对用户）
	2、水箱角阀未打开。	2、打开水箱角阀（针对专业人员）
	3、进水阀浮筒有异物卡住或进水阀传动构件使得浮筒无法正常下落。	3、检查进水阀并排除异物（针对专业人员）。
	4、不是以上原因，依然无法进水。	4、更换进水阀（针对专业人员）。
水箱有水不断流到马桶里	水箱出水口、排水阀底座周围有异物（砌墙时不小心掉进去的砂浆、小石块等），造成排水阀无法很好的密闭。	清理水箱内部的异物（针对专业人员）。

Common faults	Reason	Processing methods
The cistern can not be inlet water	1、 Switch of total household water doesn't turn on or thewater was be cut off.	1、 Turn on the cistern of total household water or contact property personnel to solve problems(for user).
	2、 Switch of angel valve doesn't turn on.	2、 Turn on the cistern of angel valve (for professional person).
	3、 Stuck by residuums or the drive component of inlet valve, which makes the float of inlet valve to fall naturally.	3、 Check the fill valve and remove the residuum(for professional person).
	4、 The cistern can not be inlet water without the reasons as follows.	4、 Change the inlet valve(for professional person).
Water of the cistern flow into the toilet	1、 Around the outlet of cistern and behind of flush valve remind residuums (fall into the mortar and little stones when to built walls.), resulting in flush valve can not be sealed well.	1、 Get rid of the residuums in the cistern(for professional person).

⚠️ 重要提示:

1. 安装前请仔细阅读说明书，本公司不承担因安装人员未按说明书要求施工所造成的损失. 产品中包含润滑剂，安装马桶时选用。
2. 在安装本产品前，请根据室内装修的总体策划确定完成后的地坪面FFL，并在安装墙上划出FFL线，并始终以此作为高度0的基准线。
3. 在安装本产品前，请确认需要安装的便器的结构及外形，图1为参考结构。同时需实际测量便器与便器低部间的实际尺寸H，以利后续安装使用。

注: 1. 请在贴瓷砖前安装本产品；所有的尺寸单位为毫米。

2. 图示零件若与实物不符，请与实物为准。

3. 本说明书以后排式安装为例。

⚠️ FFL ∇_0 =完成面地坪。

⚠️ Important remind:

- 1.Please read through this Instructions carefully prior to installation,and our company shall not be responsible for any loss caused by not installing accrding with this Instructions. There are lubricants in production for toilet bowl installation.
- 2.Please confirm the FFL according to overall fitment arrangement indoor. Line out the FFL on the wall and always regard FFL as datum line of 0 height.
- 3.Please confirm the structure and shape before installing the toilet bowl. Meanwhile measure the exact size H between outfall and infall of toilet bowl so as to serve in subsequent installation.

2.Please confirm the FFL according to overall fitment arrangement indoor. Line out the FFL on the wall and always regard FFL as datum line of 0 height.

3.Please confirm the structure and shape before installing the toilet bowl. Meanwhile measure the exact size H between outfall and infall of toilet bowl so as to serve in subsequent installation.

Note: 1.Please install the frame before paving the tiles. The dimensional unit is millimeter.

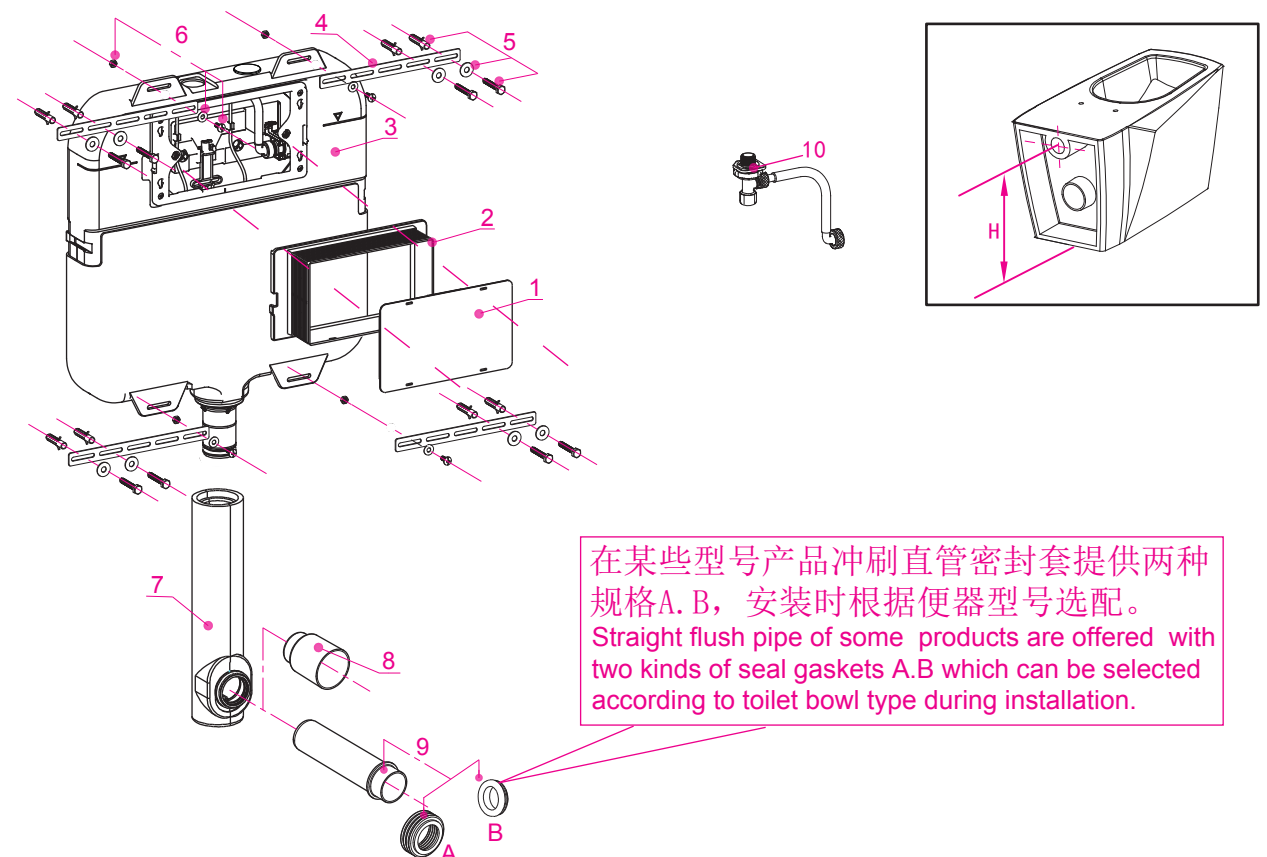
2.Please subject to the object as right if it is not in conformity with the components in picture.

3.Take backwards drain pattern ceramic as an example in this instruction.

⚠️ FFL ∇_0 = FFL of finish face, all dimension is millimeter

配件一览表:

Accessories List:



在某些型号产品冲刷直管密封套提供两种规格A. B，安装时根据便器型号选配。
Straight flush pipe of some products are offered with two kinds of seal gaskets A.B which can be selected according to toilet bowl type during installation.

TOTO

自动感应隐藏式水箱说明书

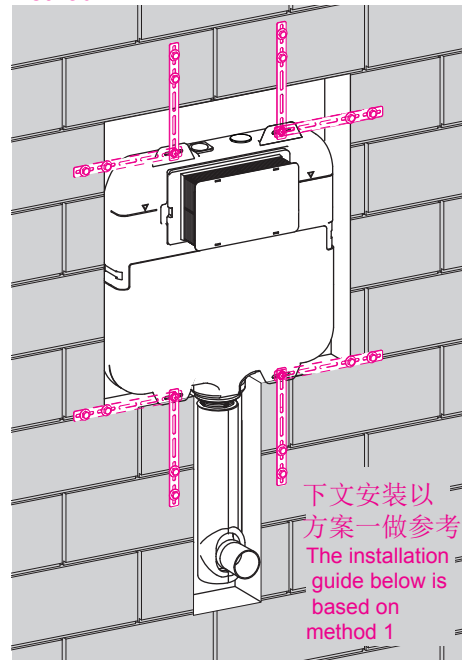
INSTRUCTION FOR ELECTIRC CONCEALED CISTERN

NO.	名 称 NAME	数 量 QTY	用 途 FUNCTION
1	膨胀螺栓组 Expansion bolt components	8	固定水箱组件 To fix the tank components
2	保护框 Protection frame	1	砌墙时为按钮面板预留空间用 For space reservation of push button plate when building the wall
3	保护盖 Protection cover	1	防止装修时杂物进入水箱 To prevent sundries falling into the tank when fitting
4	紧固块 Fixing sheet	4	调整及固定水箱组件 To adjust and fix the components of tank
5	固定螺钉组 Screw components	4	将紧固板固定到水箱上 To connect the fixing sheet and the tank
6	冲刷弯管组件 Curved drain pipe components	1	连接水箱与便器 To connect tank and toilet bowl
7	冲刷直管组件 Flush straight pipe components	1	用于便器的连接及与墙面距离的补偿 To connect the bended pipes to toilet bowl
8	水箱组件 Tank components		装水及承载其它零部件 To load of water and the other accessories
9	堵头 Plug	1	砌墙时为冲刷直管和排水直管预留空间用 To reserve space for straight pipes when laying bricks
10	角阀 Angle valve	1	进水阀开关 On-off For Filling Water

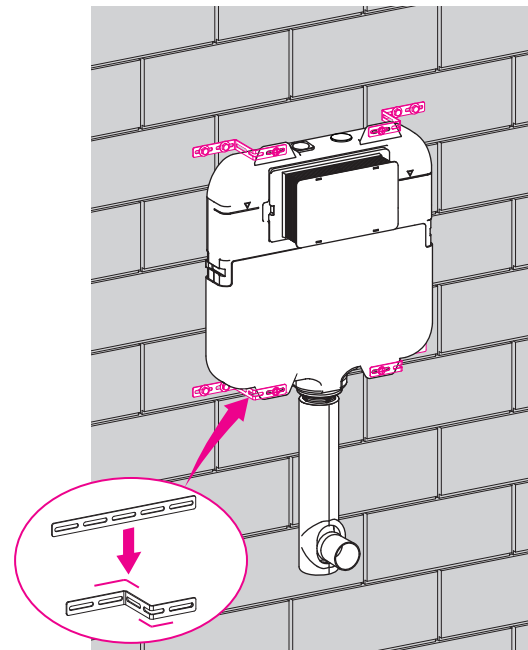
一、安装方式策划 Installation method:

- 1 根据装修设计的需要、水箱上挂耳的位置朝向选择方案一或方案二的安装方案。
Choose installing method 1 or 2 according to request of fitment design and the direction of side notching position on the tank.

水箱安装方案一
Method 1

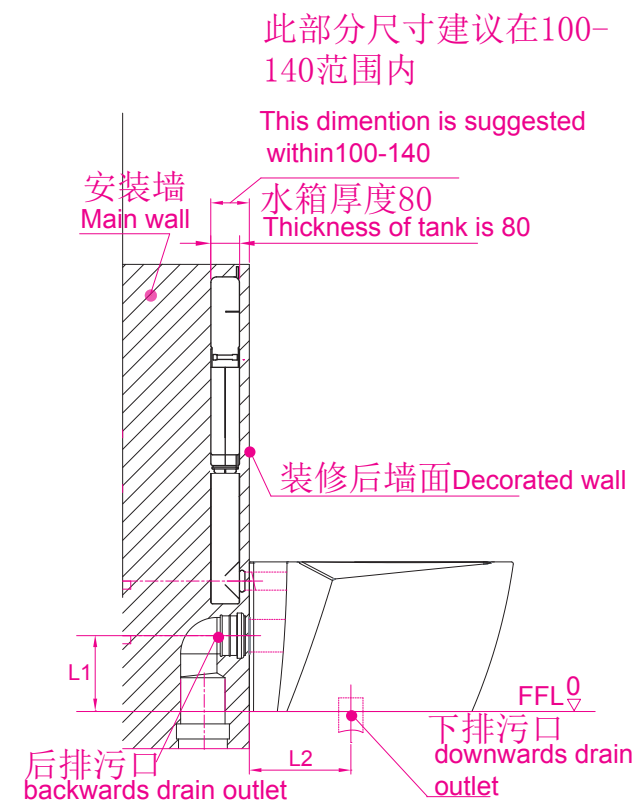


水箱安装方案二
Method 2



一、安装方式策划 Installation method:

2 侧面图 Side elevation

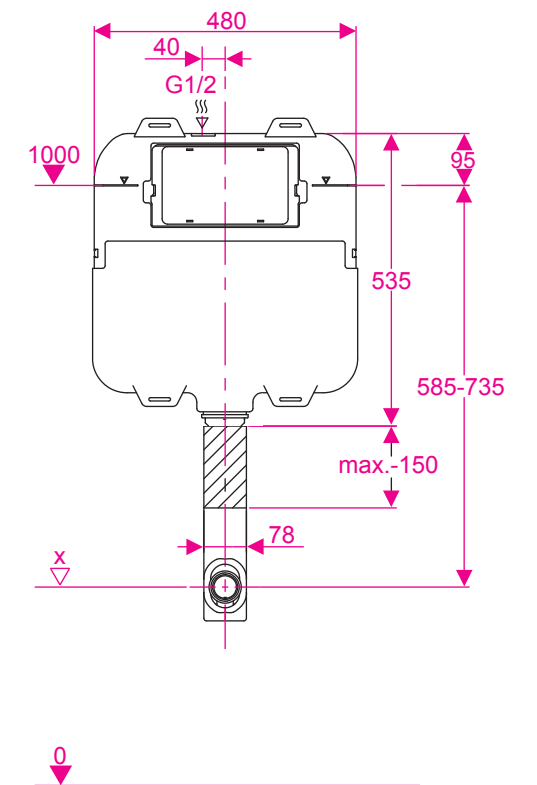


后排式: L1尺寸排污口中心到FFL距离, 请客户根据便器的实际尺寸调整. 具体请参照便器安装说明书. 下排式: L2尺寸为下排污口中心到完成墙面的距离, 请客户请参照便器安装说明书, 确定L2尺寸.

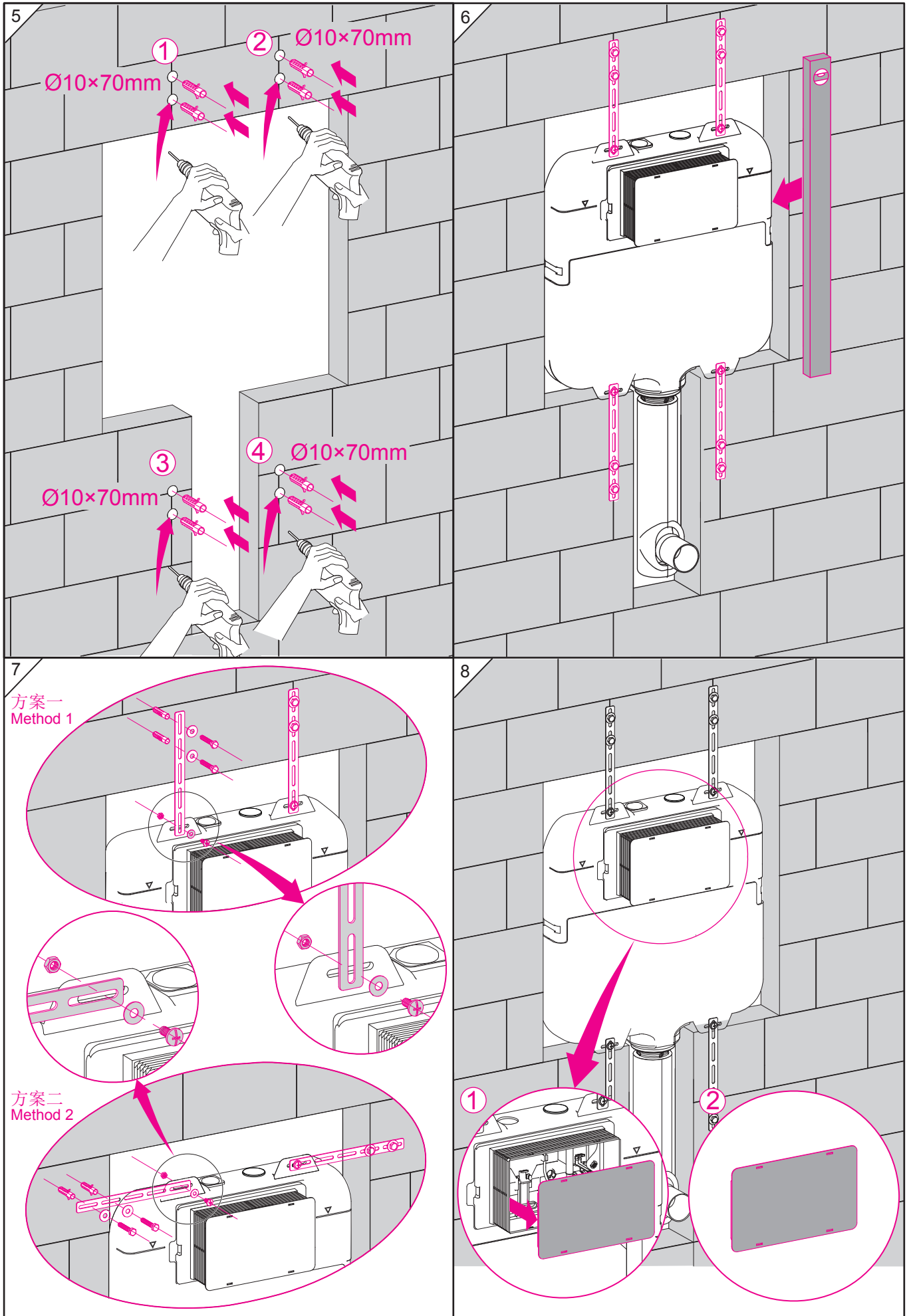
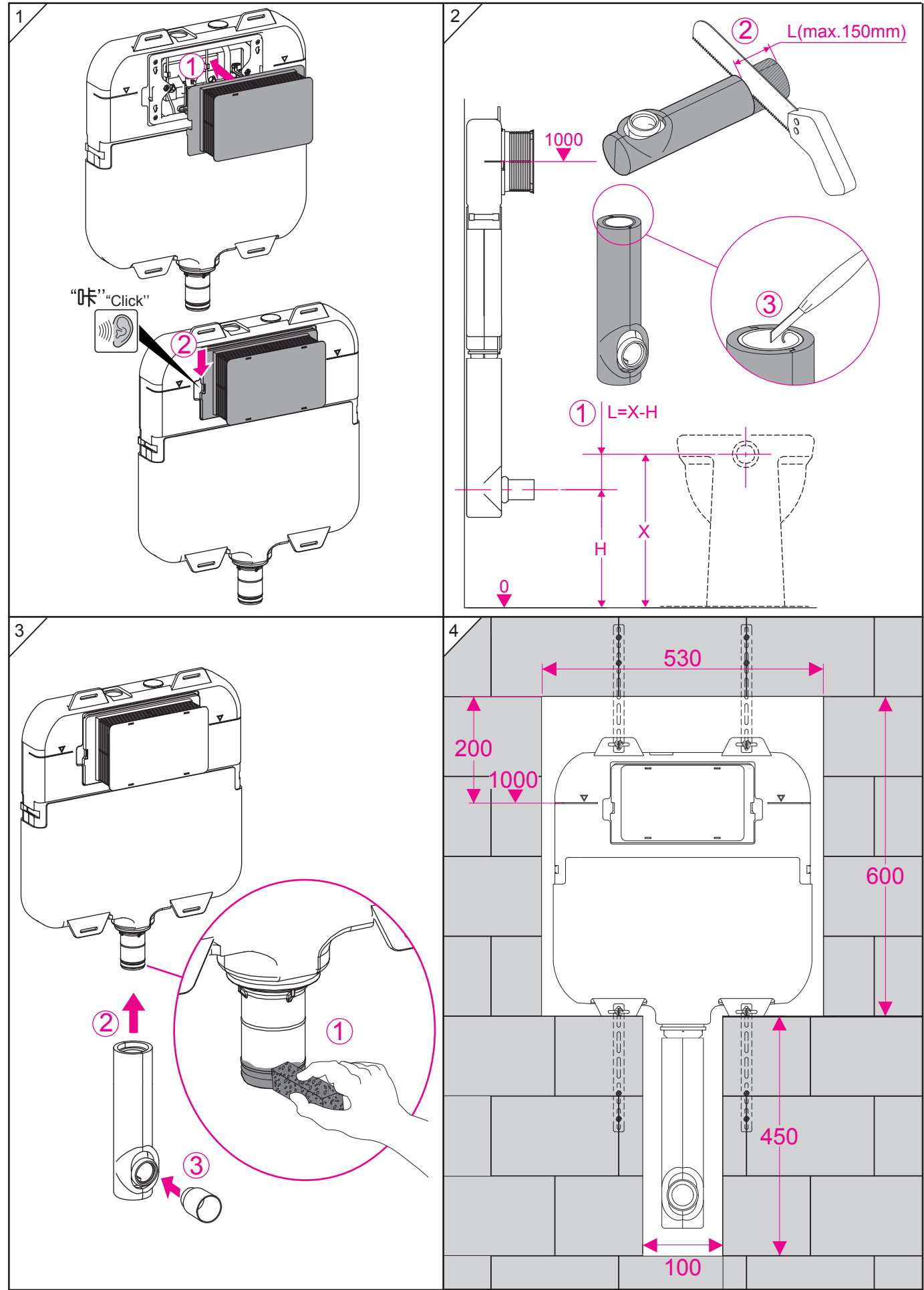
Backwards drainage: please adjust the distance of L1 according to the real size of toilet bowl. Please refer to the instruction of toilet bowl installation.

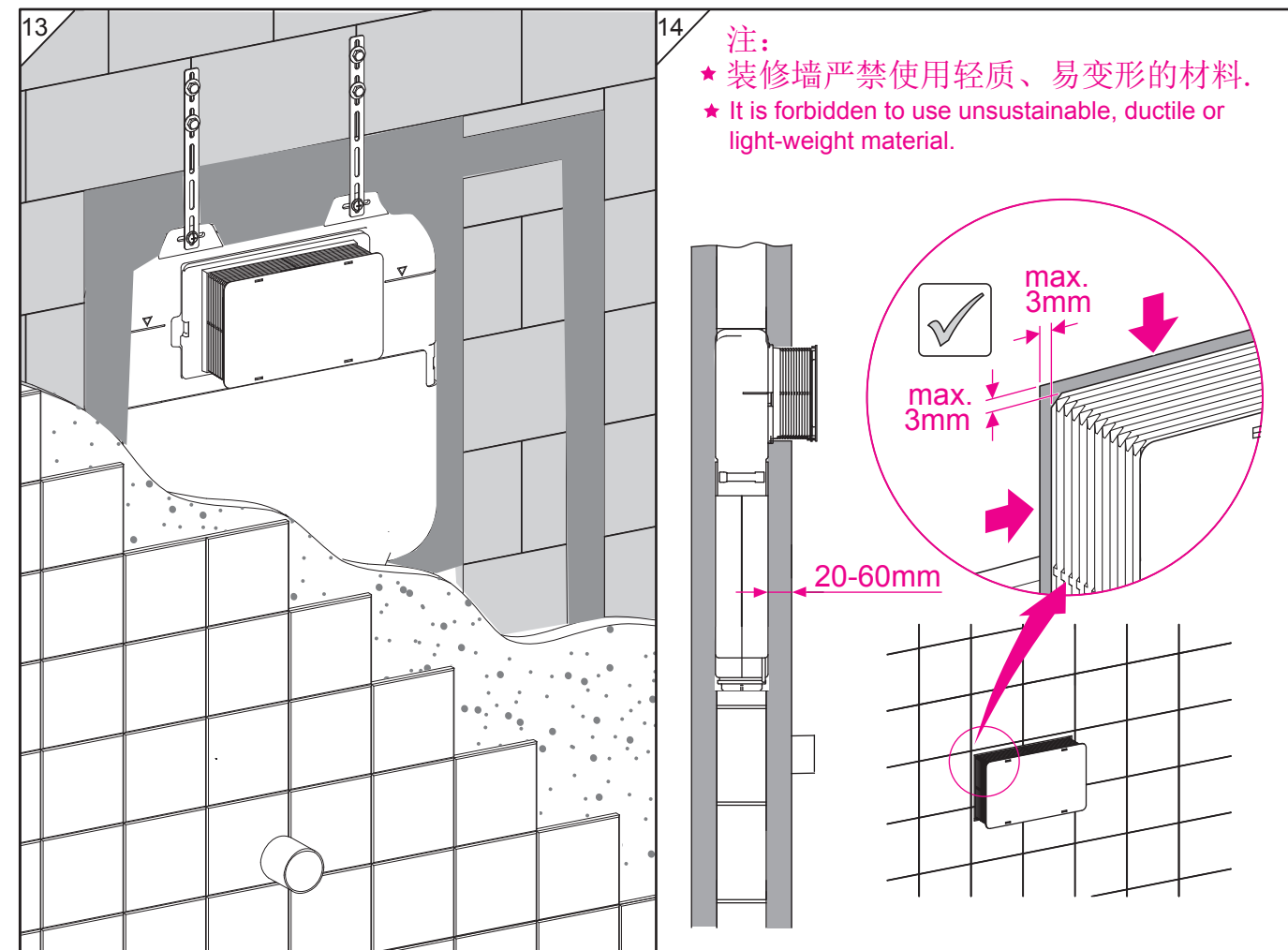
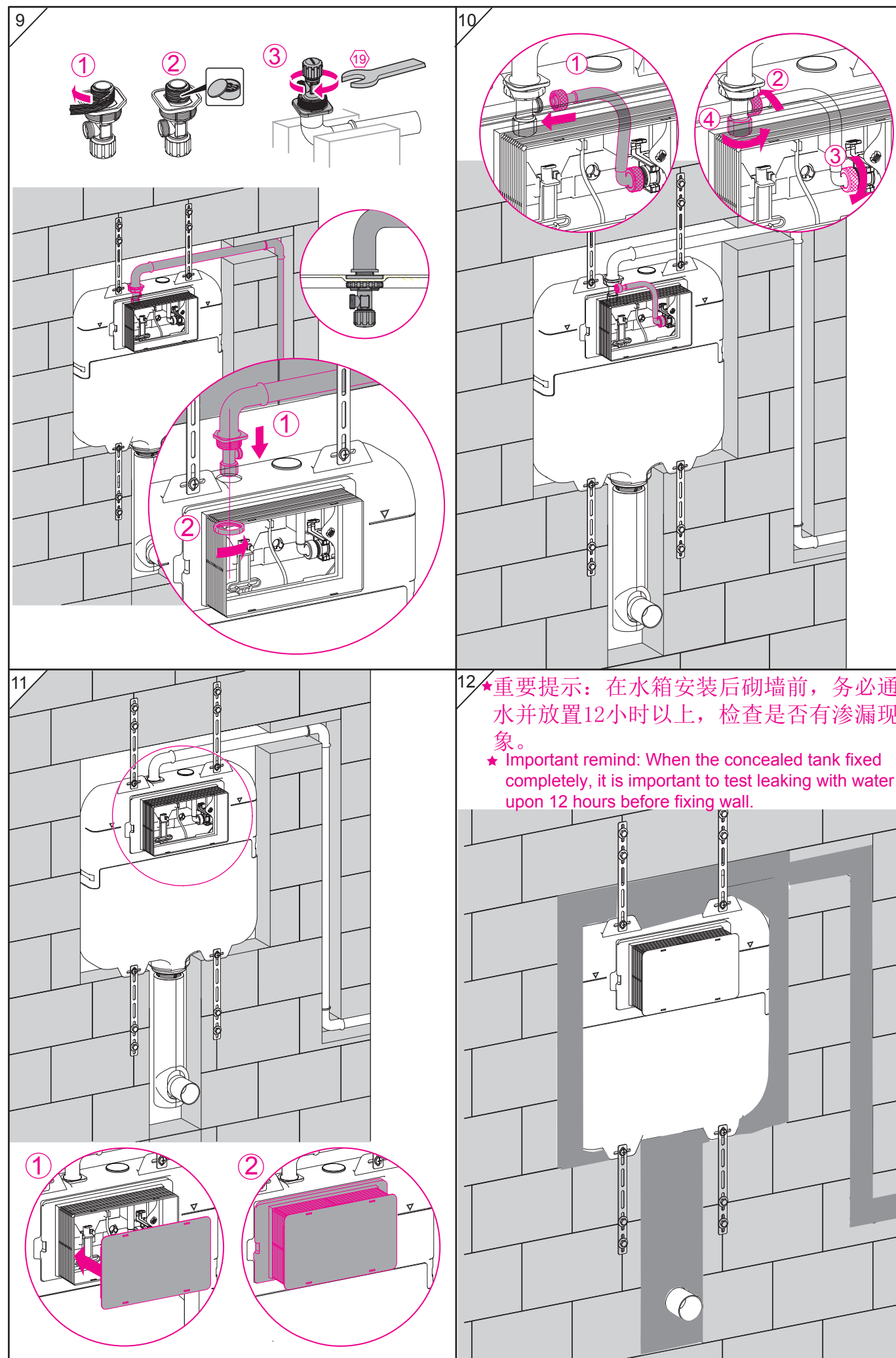
Downwards drainage: please make sure the size of L2 according to the instruction of toilet bowl installation.

3 主视图 Main view

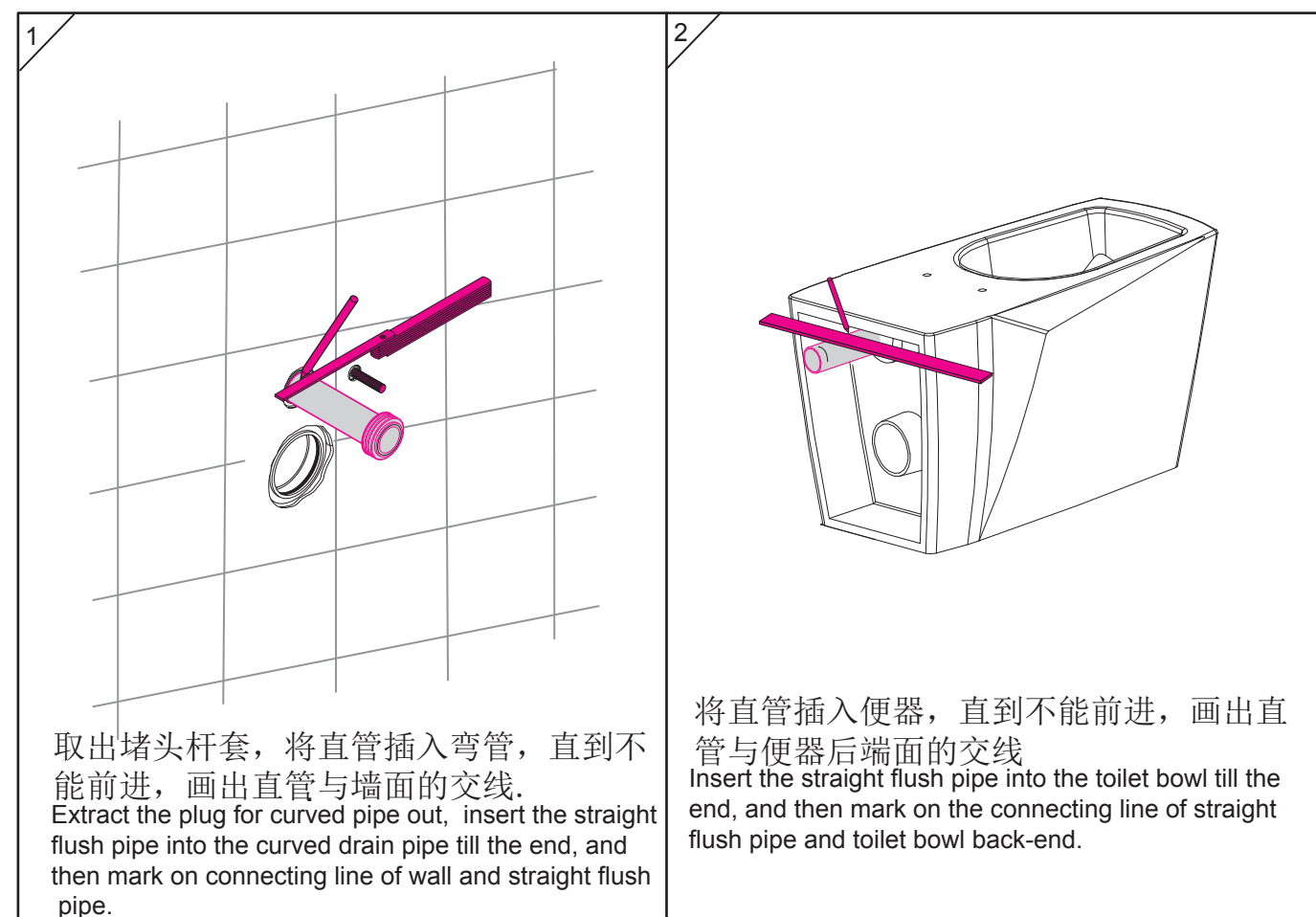


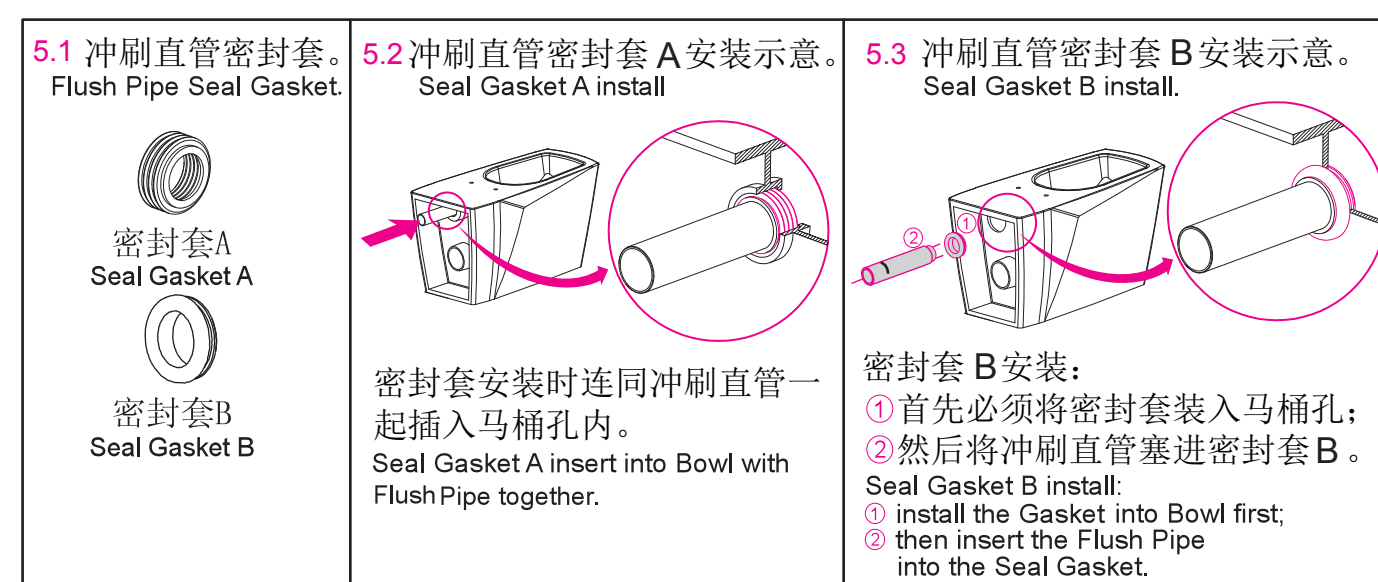
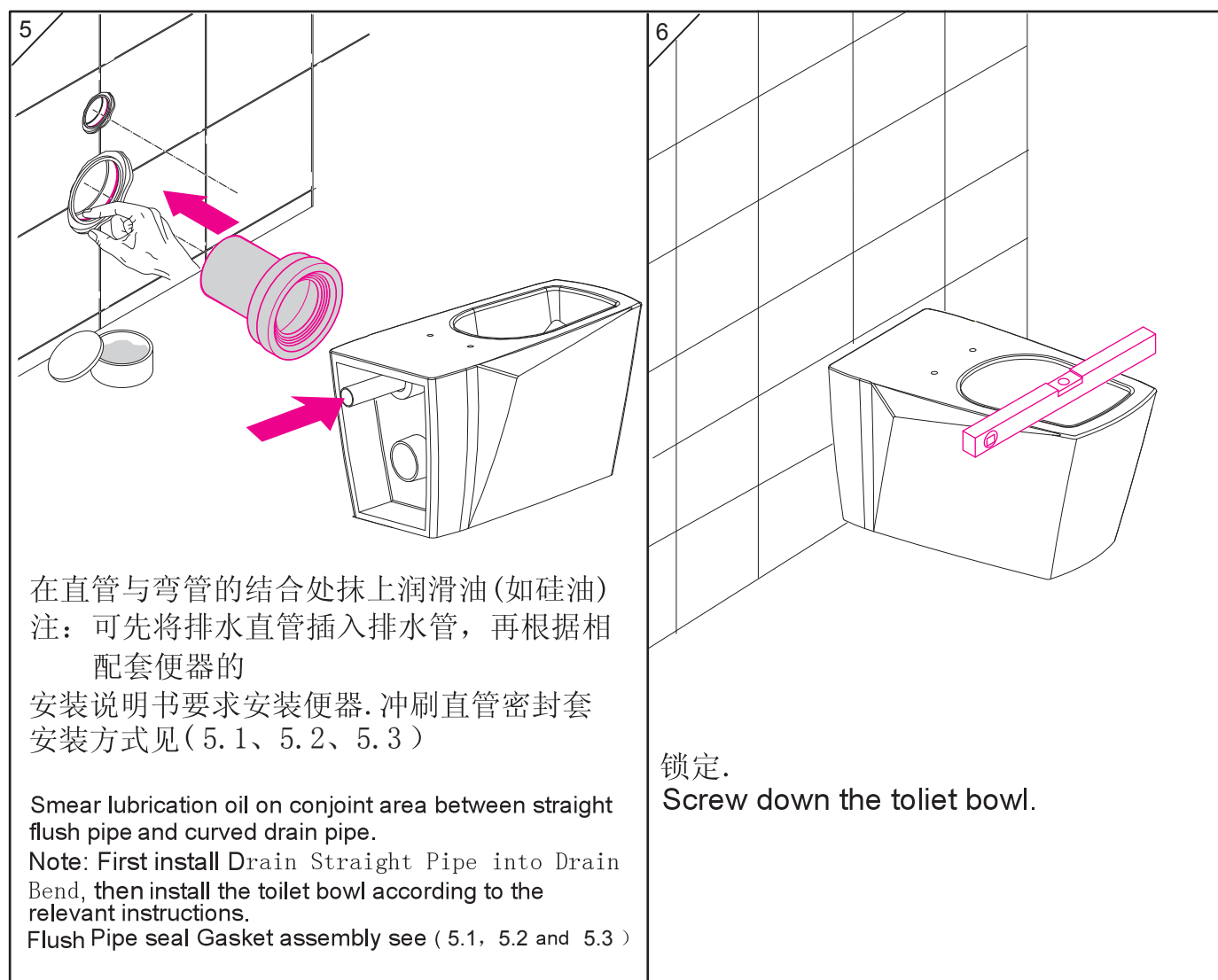
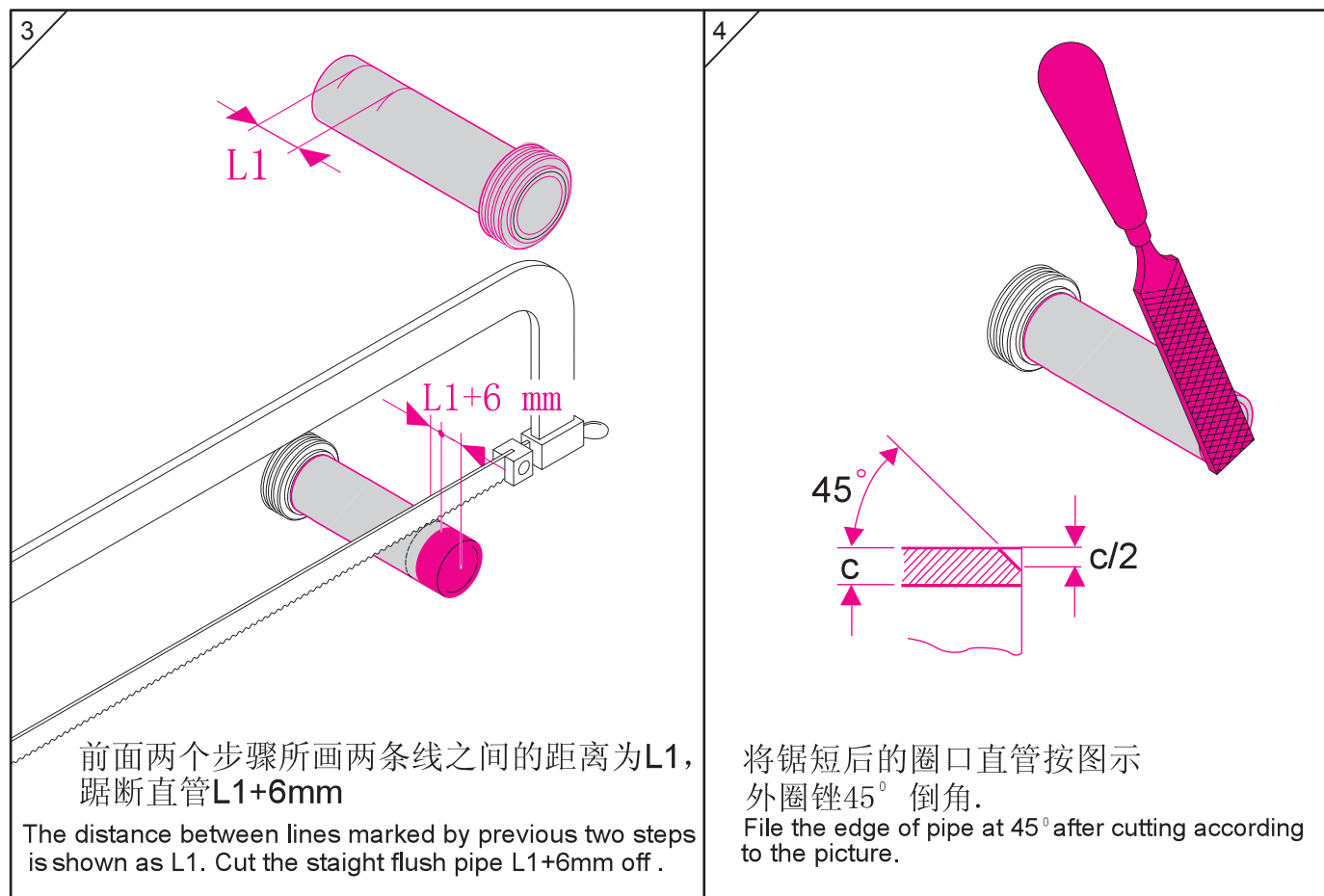
二、安装步骤 The Installation Manual:





三、安装马桶: Installation of toilet bowl:





四、水箱配件安装 Installation of accessories for tank:

