

施工说明书 Installation Manual

安装产品前请仔细阅读本施工说明书，并保留备用。
Before installing the product, please read the Installation Manual carefully and keep it for future reference.

TOTO

TOTO

OG4251RY
2021.10

目录

目 录	
目 录.....	1
明细单.....	2
使用条件与施工上的注意.....	3
施工上的注意与保养.....	4
安装完成图.....	5~13
水嘴的安装.....	14~24
生产厂家与销售商.....	25

明细单

明细单	
水嘴主体部	
（含长固定螺栓、淋浴部）	1套
水嘴埋入部	
（含继手、固定螺丝、膨胀管）	1套
施工说明书.....	1本
使用说明书.....	1本
使用此明细单的产品包括：	
TBG01306* 铜合金立式单柄双控浴缸水嘴	
（可转换·带手持花洒）	
TBG02306* 铜合金立式单柄双控浴缸水嘴	
（可转换·带手持花洒）	
TBG07306* 铜合金立式单柄双控浴缸水嘴	
（可转换·带手持花洒）	
TBG08306* 铜合金立式单柄双控浴缸水嘴	
（可转换·带手持花洒）	
TBG09306* 铜合金立式单柄双控浴缸水嘴	
（可转换·带手持花洒）	
TBG10306* 铜合金立式单柄双控浴缸水嘴	
（可转换·带手持花洒）	
TBG11306* 铜合金立式单柄双控浴缸水嘴	
（可转换·带手持花洒）	
TBP03301* 铜合金立式单柄双控浴缸水嘴	
（可转换·带手持花洒）	
TBN01105* 固定金具	

使用条件与施工上的注意

使用条件

- 1. 供冷水*热水压力：
最低压力.....0.05MPa（流动压）
最高压力.....1.0MPa（静压）
推荐使用压力.....0.1~0.5MPa（流动压）
- 2. 供水温度在4℃~90℃，建议使用热水温度60℃以下，供热水请勿使用蒸汽。
- 3. 使用环境温度0℃以上。如果低于0℃，水嘴会出现变形、冻裂等现象。
- 4. 为防止花洒内部损坏，花洒侧吐水温度不得超过60℃，建议使用温度45℃以下。
- 5. 长时间不使用时，可能导致水嘴内部及外部锈蚀不能使用等现象。
- 6. 如果您需要废弃本产品，请勿将其作为一般生活垃圾处理，请依照法规经由独立的回收体系进行合适的处理、恢复和回收。
- 7. 本说明书中的产品具有清洗功能。

施工上的注意

- ⚠警告 表示如果无视此标志而误操作时，有造成人员重伤或死亡。
- ⚠注意 表示如果无视此标志而误操作时，有造成人身伤害或财产损失。

警告

- 1. 水嘴的供热水一侧处于高温状态，请勿使皮肤直接接触五金配件表面，否则可能会烫伤。
- 2. 请勿配反冷*热水配管，否则可能会烫伤。
- 3. 供热水请勿使用蒸汽，否则可能会烫伤。
- 4. 当直接从吐水口侧切换到淋浴器侧或从淋浴器侧切换到吐水口侧时，水温会发生变化，要用手测试水温后再使用，否则可能会烫伤。

施工上的注意与保养

注意

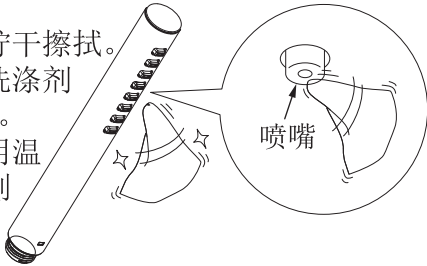
- 1. 由于陶瓷阀芯是较精密的部件，请勿擅自分解，否则可能会造成漏水等不良。
- 2. 请勿撞击本产品，否则可能会造成故障、漏水。
- 3. 随着产品式样的不断更新，实物存在与图示不符的情况，但基本安装、使用原理相同。
- 4. 由于出厂前进行通水检查，故水嘴内可能有残留水，并非产品有问题。
- 5. 在可能结冰的场所使用时，要切实做好防冻措施。
因结冰，零件破损，有可能导致漏水，造成财产损失。因结冰而造成的破损即使在保修期内也是有偿修理。请不要让产品的环境温度低于0℃。

防冻措施

- 在可能结冰的场所使用时，要切实做好防冻措施。
- 1. 产品结冰的话零件损坏，成为漏水的原因。
- 2. 因结冰造成的零件破损即使在保修期也是有偿修理。
- 3. 施工完了后或长时间不使用时，要有预防突然降温的准备，要对产品进行结冰预防。
- 4. 因为有结冰的危险，请不要让产品周围的温度在0℃以下。

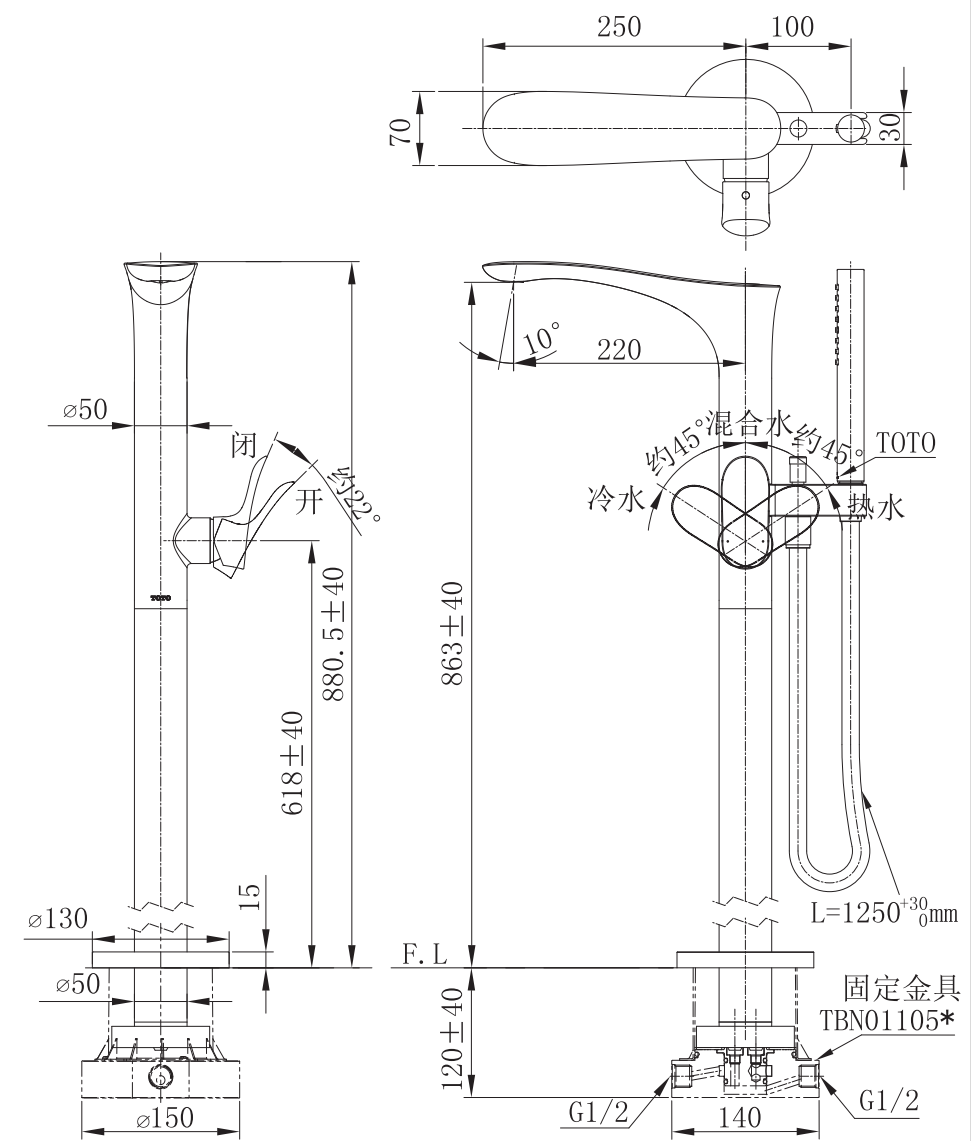
保养

- 为长期保持产品的美观，请用户按以下方法维护保养。
- 1. 经常用软布擦拭，间或用软布蘸水擦拭。
- 2. 当有污垢且比较明显时，请用中性洗涤剂擦拭后充分进行水洗。
- 3. 花洒保养与维护：
 - 轻度脏的场合，将软布用温水浸湿后拧干擦拭。
 - 重度脏的场合，用软布蘸取适量中性洗涤剂擦拭后用清水充分清洗，再用软布擦干。
 - 当喷嘴有堵塞、流线混乱时，将软布用温水浸湿后拧干擦拭，注意不要将喷嘴划破，如果太用力擦拭，喷嘴容易被划破、变形，从而造成流线变形。



安装完成图

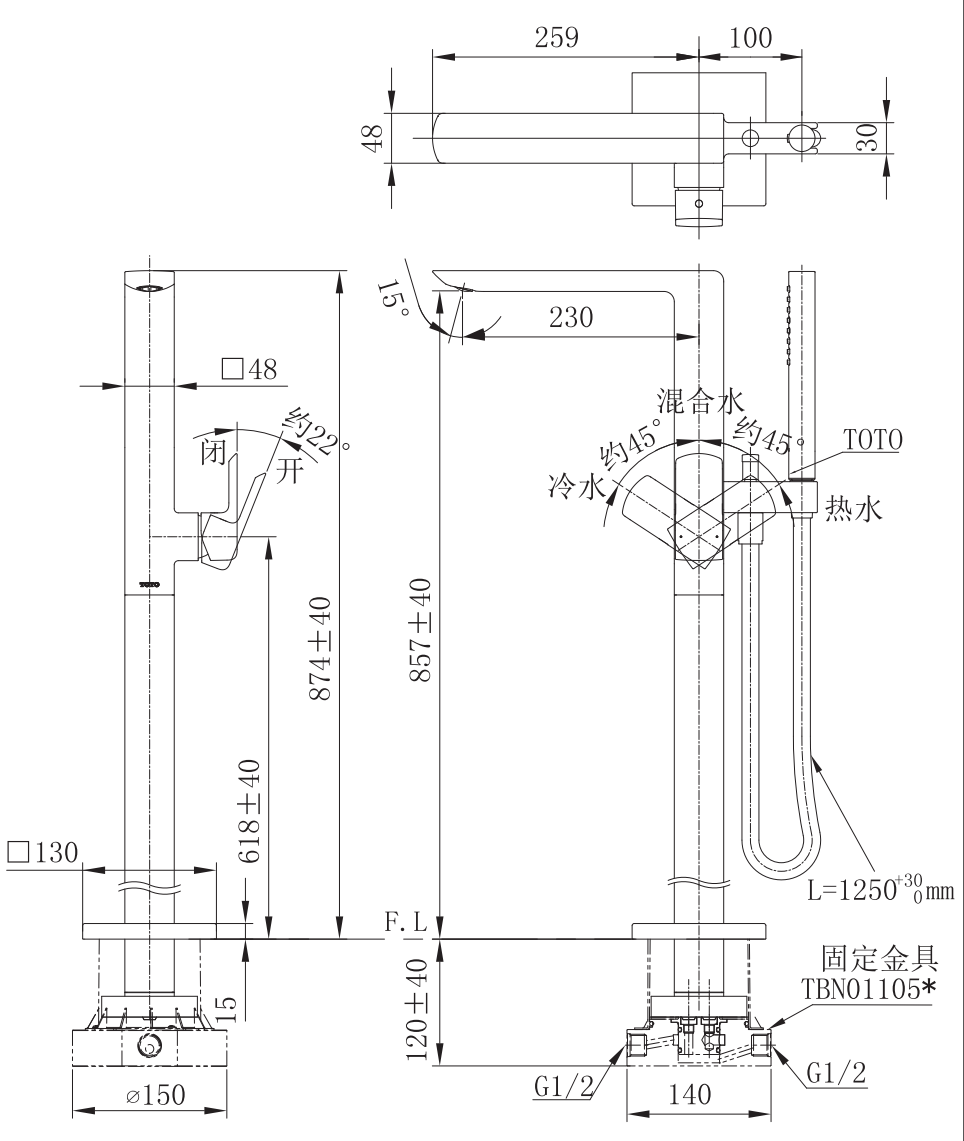
例：TBG01306*



注：图中尺寸单位为mm。（ ）内尺寸参考尺寸

安装完成图

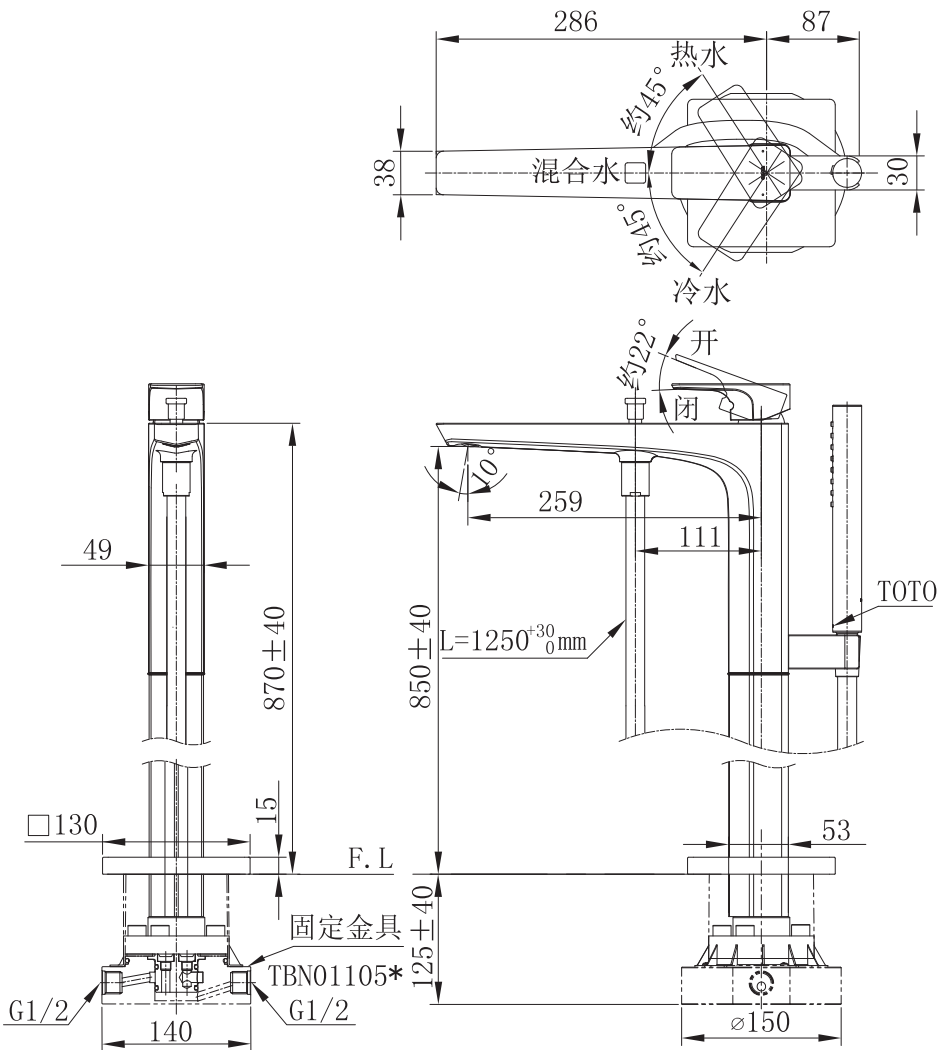
例：TBG02306*



注：图中尺寸单位为mm。（ ）内尺寸参考尺寸

安装完成图

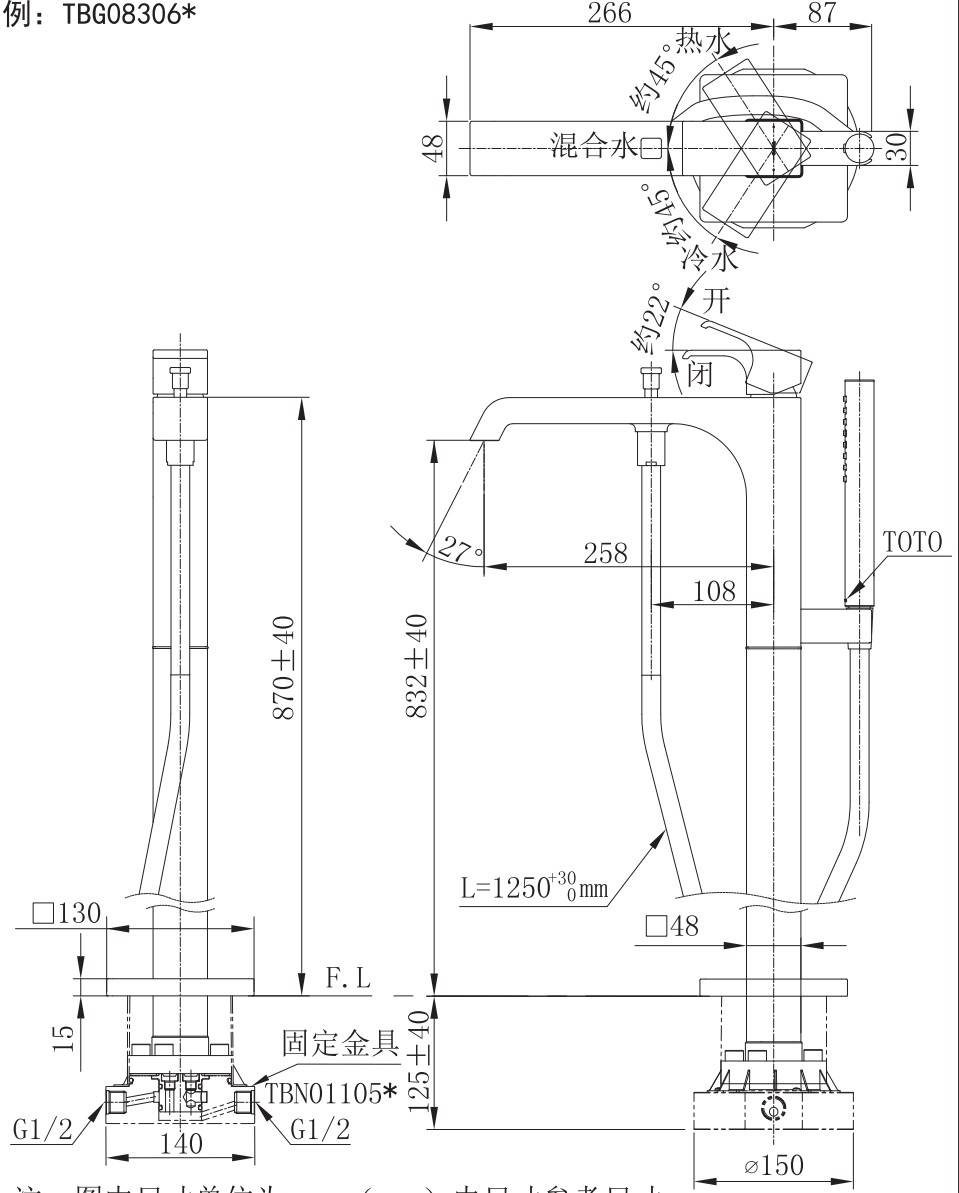
例：TBG07306*



注：图中尺寸单位为mm。（ ）内尺寸参考尺寸

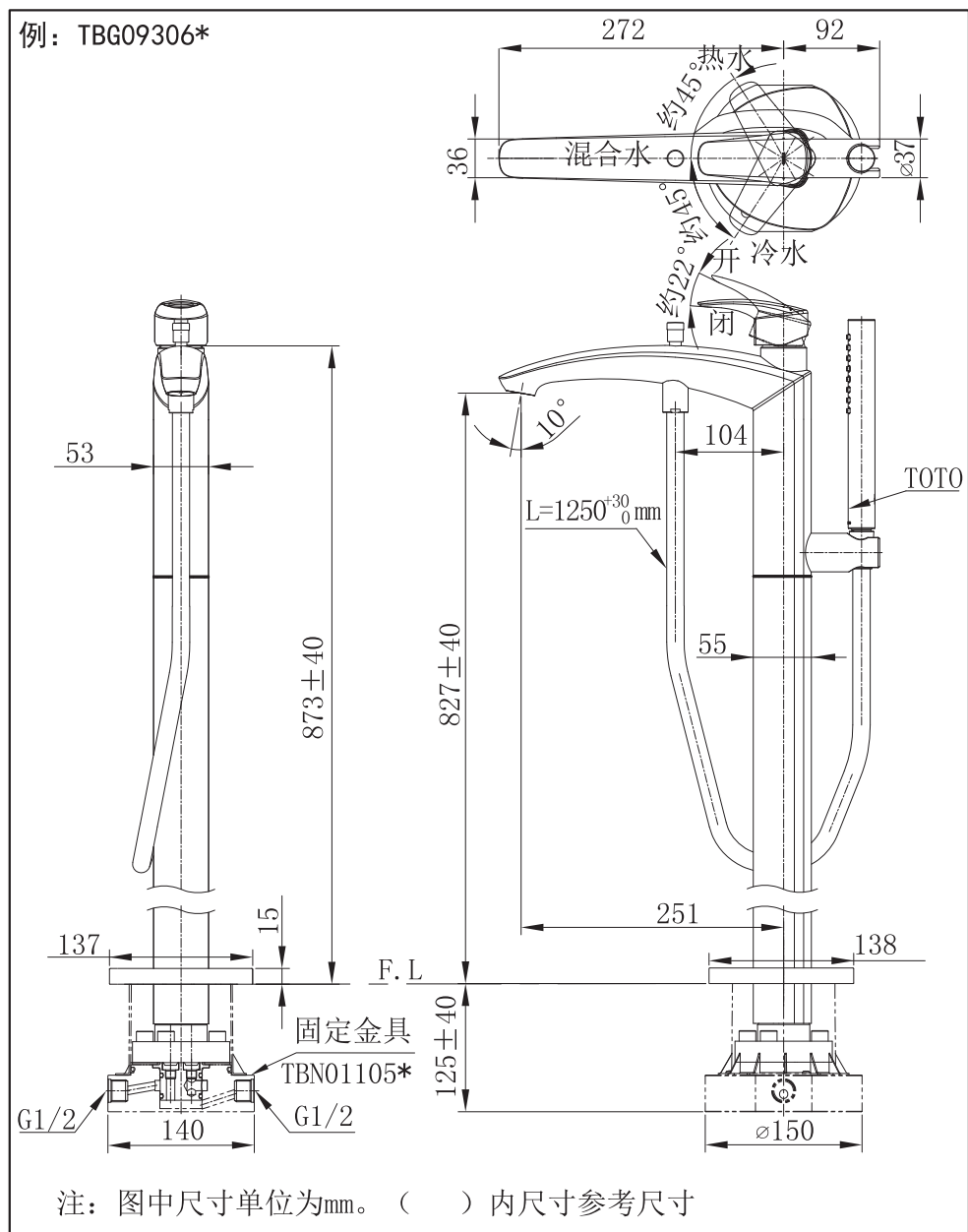
安装完成图

例：TBG08306*

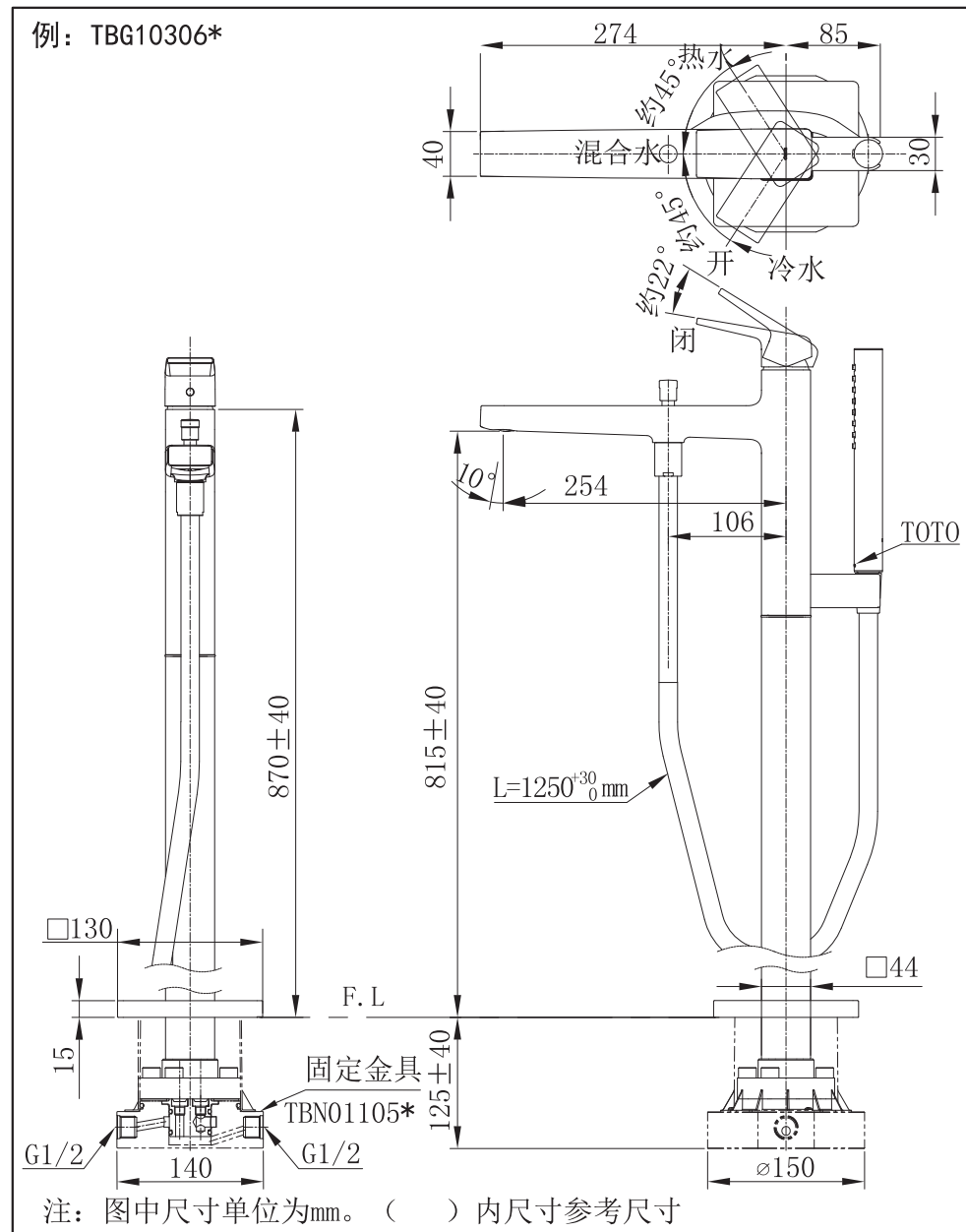


注：图中尺寸单位为mm。（ ）内尺寸参考尺寸

安装完成图

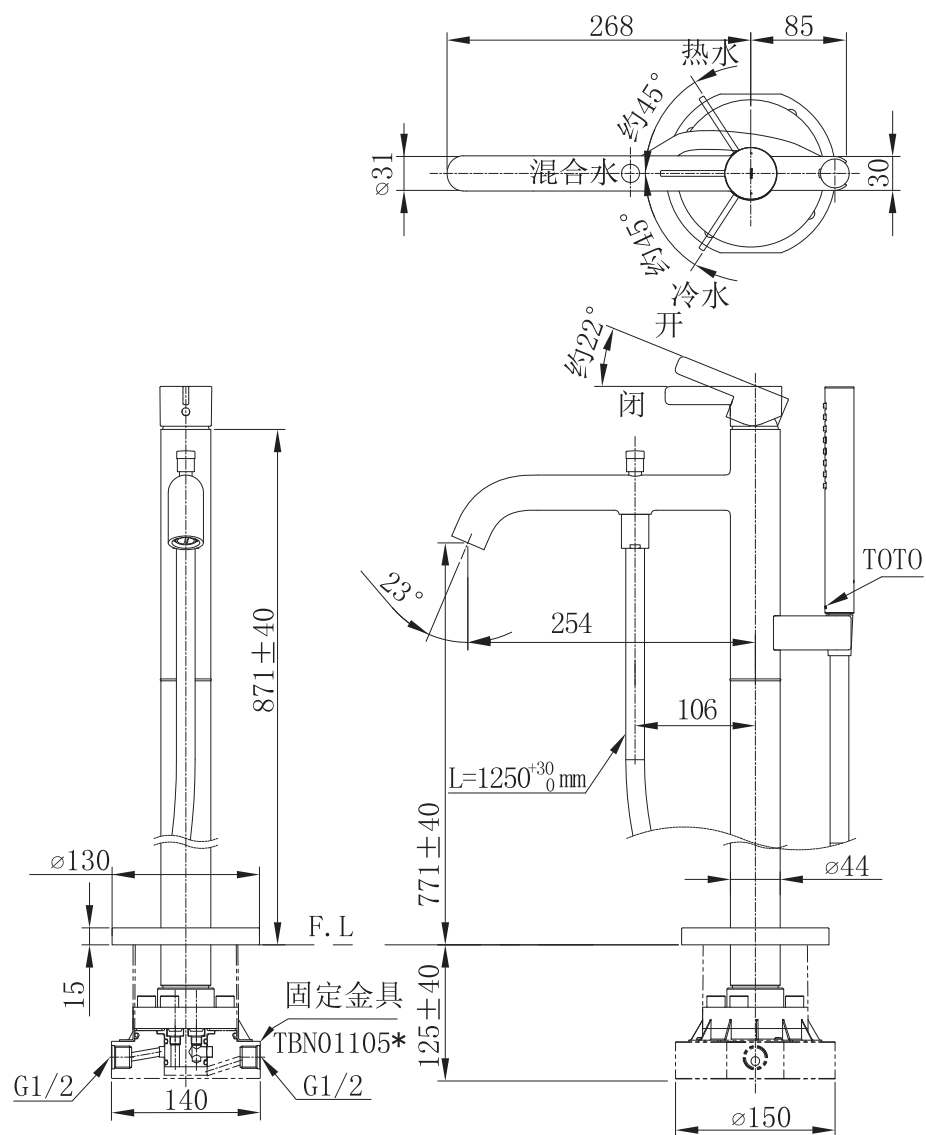


安装完成图



安装完成图

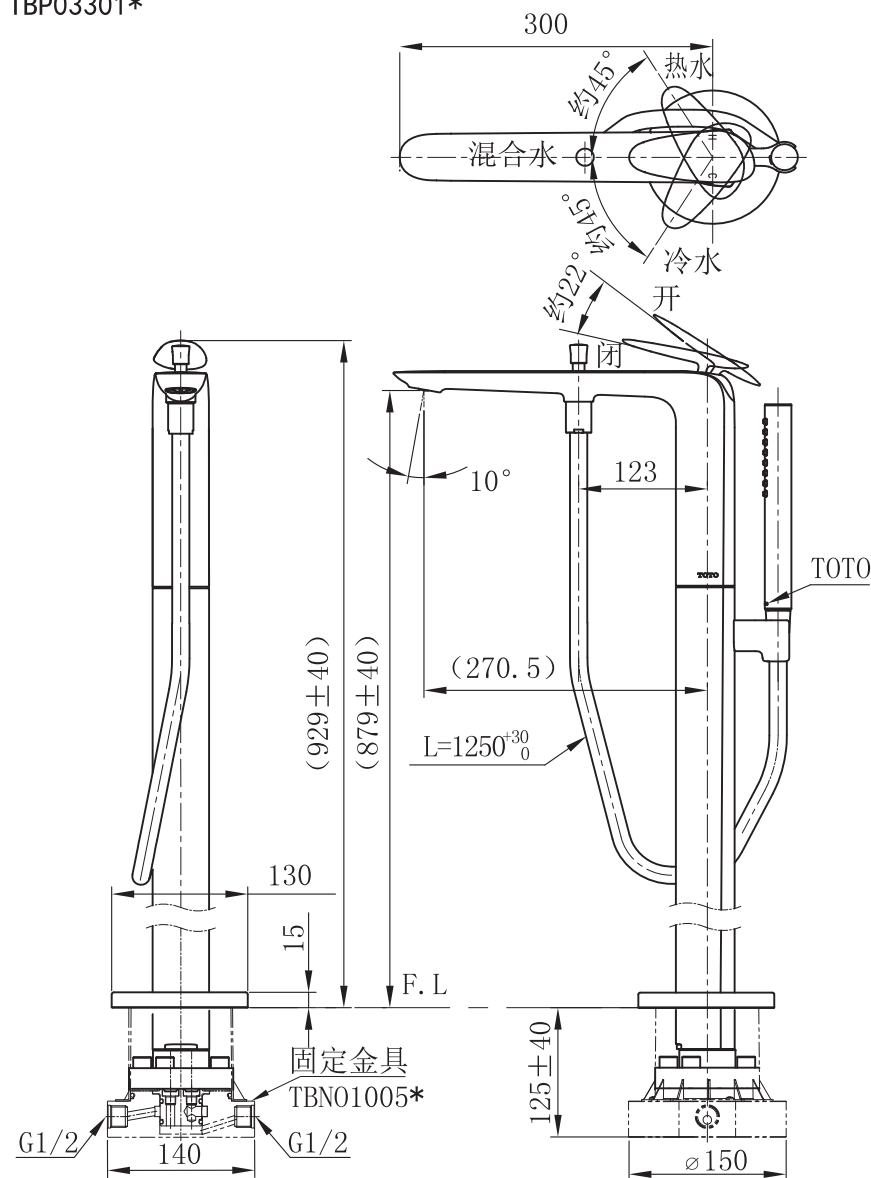
例：TBG11306*



注：图中尺寸单位为mm。（ ）内尺寸参考尺寸

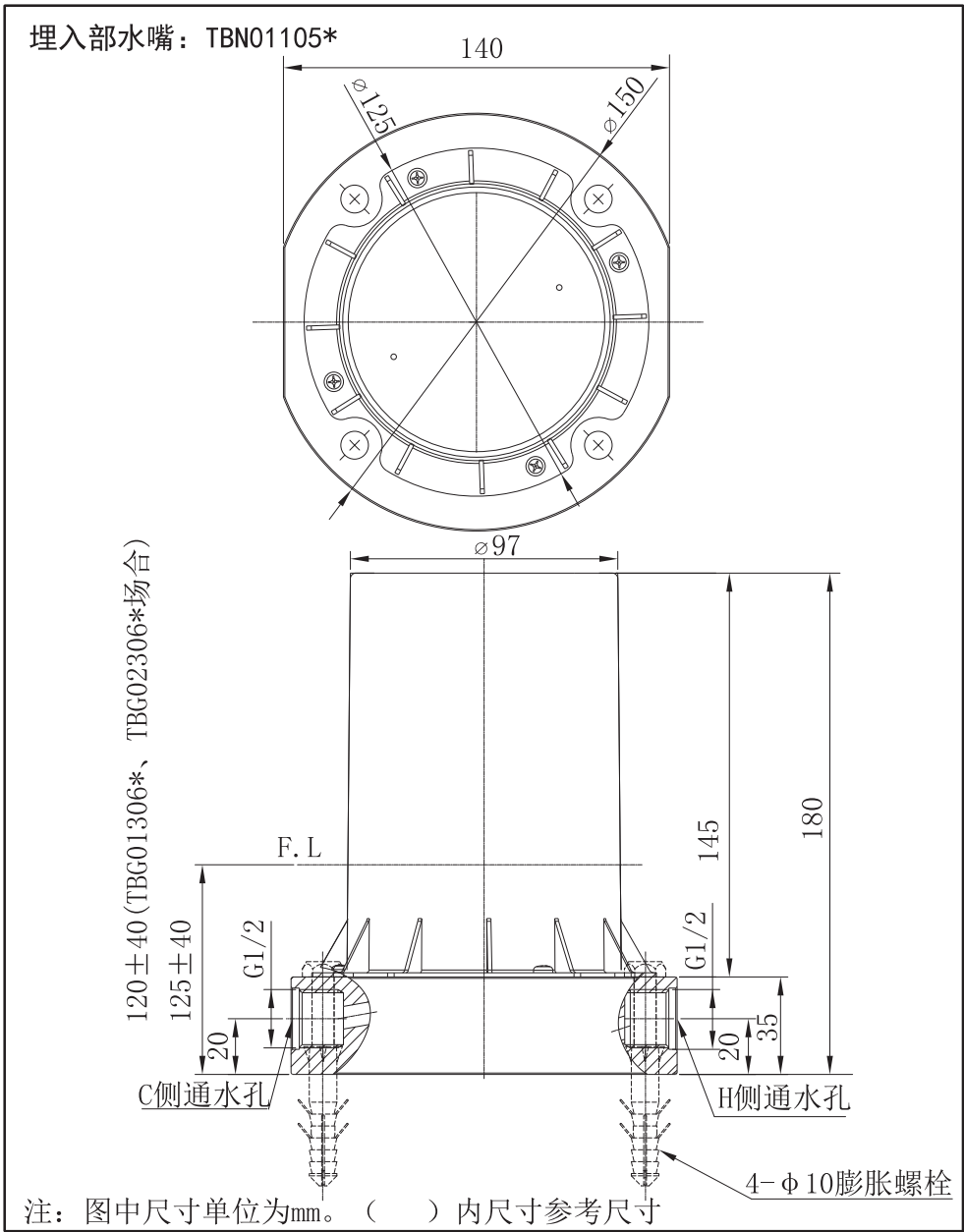
安装完成图

例：TBP03301*



注：图中尺寸单位为mm。（ ）内尺寸参考尺寸

安装完成图



水嘴的安装

事前准备的工具



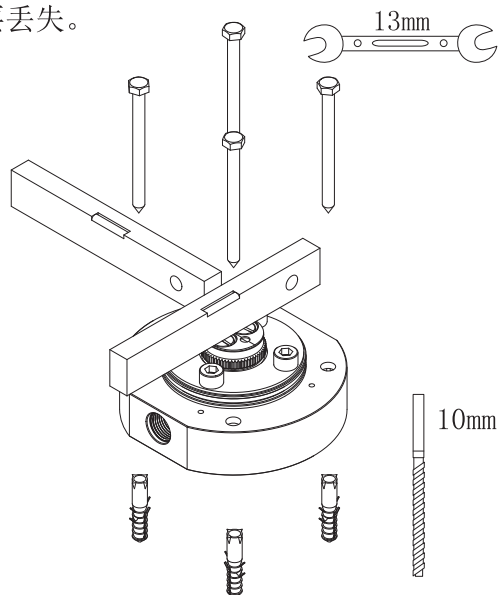
安装前确认

- 龙头吐水口的位置根据埋入位置决定，安装位置请充分注意。
- 给水压力超过1.0MPa的情况下，请使用市场上贩卖的减压阀进行0.5MPa程度的减压。为了龙头舒适的使用，推荐使用0.5MPa的压力。
- 高压现场等使用大流量的情况下，可能会有切换操作力大的可能。这种情况下，请通过手柄降低流量来操作。
- 为防止误操作等引起的烫伤。冷水侧供水压力必须高于热水侧供水压力，或冷水供水压力和热水供水压力同压。而且，热水供水加压的情况下，加压后的热水侧供水压力一定要低于冷水侧供水压力。
- 为了防止烫伤，热水器的出水温度设定不要超过60℃。为了确保舒适的吐水温度，推荐设定热水出水温度为60℃。
- 为降低在水管流动中的热量损失，从热水器开始的配管，尽量最短距离配管，而且热水供水管必须包裹保温材。

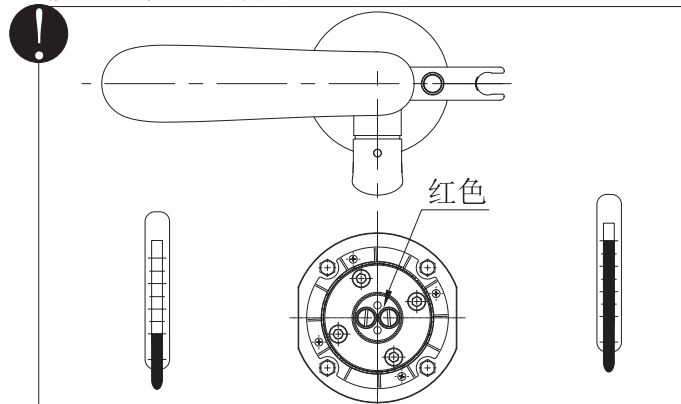
水嘴的安装

台座的设置:

■台座的C、H标签确认后，按照热水侧、冷水侧供水管的位置水平放置后，固定。台座固定后，用工具将保护套取下。保护套和螺钉因为即将还要使用，注意不要丢失。



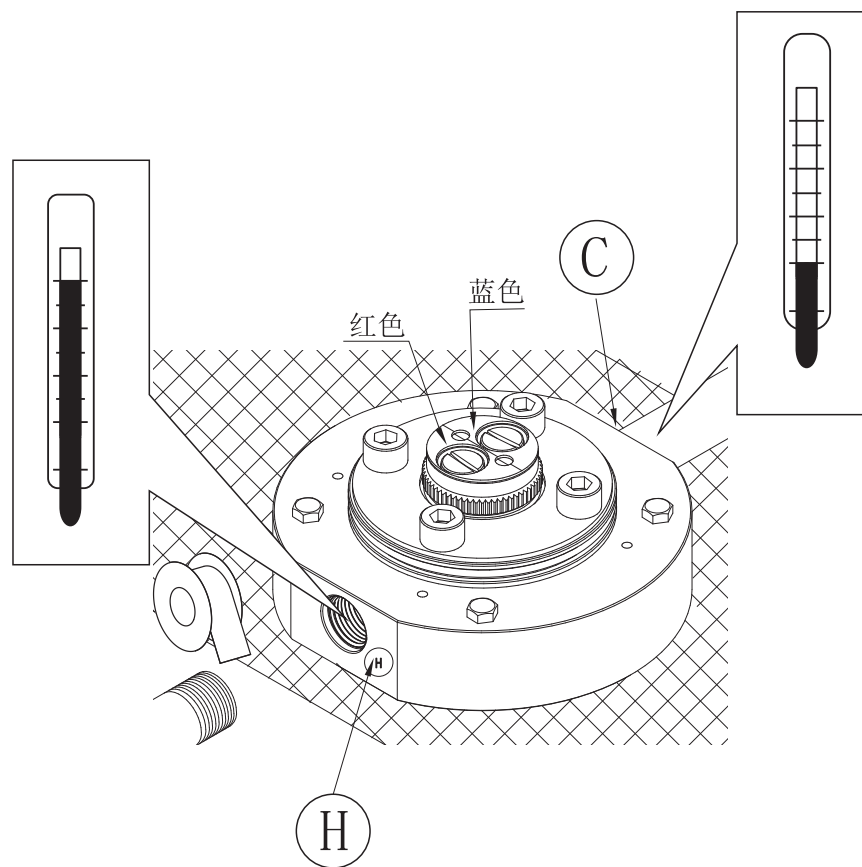
※本体的吐水口方向为台座接手上的红色表示相反方向。浴缸设定位置确认后，大致的设置方向决定后再对台座进行固定。※龙头本体固定的时候，吐水口的方向也可以调整。



水嘴的安装

配管的连接:

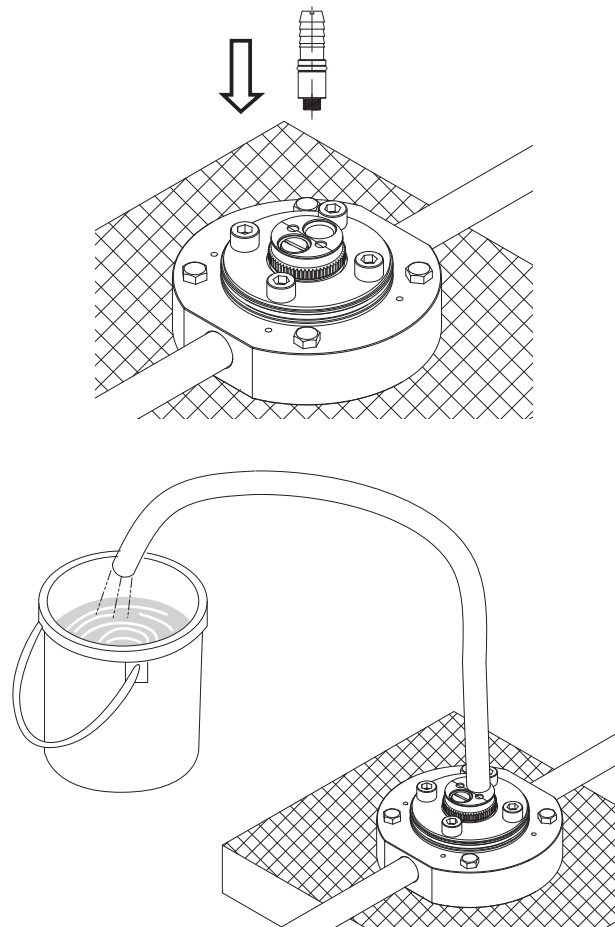
■配管连接时，与台座的C、H标示确认，注意热水侧、冷水侧供水管的位置不要接反，连接，用密封胶或密封带等充分密封固定。



水嘴的安装

热水供水管、冷水供水管内的清扫：

■使用提供的软管接手，和市场上贩卖的软管与台座连接，对热水、冷水供水管 进行冲洗，使管内的垃圾、沙子等流出。

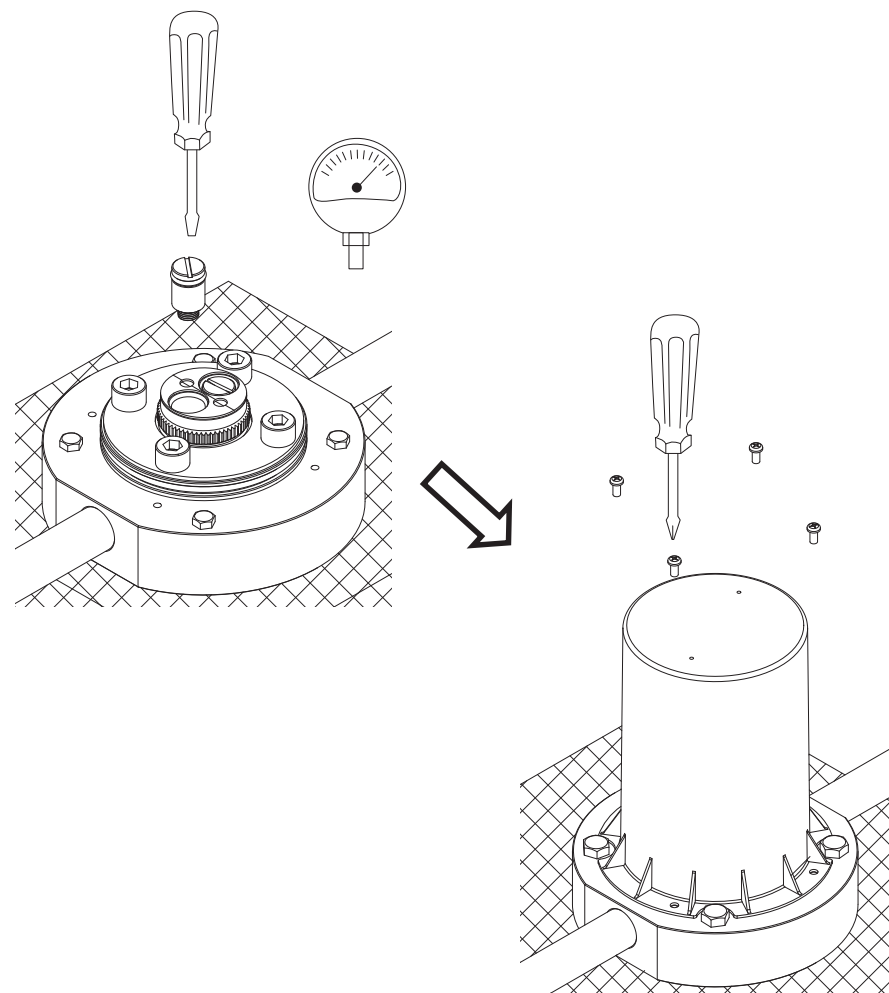


※如果对热水、冷水供水管不进行冲洗，管内的脏物、沙子等会对过滤网造成堵塞，以下的事项容易发生。 ①吐水量少②温度调节不顺畅。

水嘴的安装

进行耐压试验：

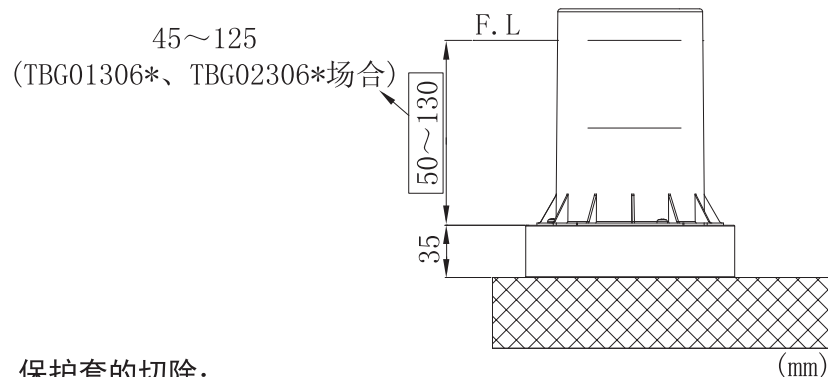
■进行耐压试验，配管连接部等确认没有漏水后，再将保护套安装后，用螺钉拧紧。可能的话，静压1.6MPa耐压1分钟。



水嘴的安装

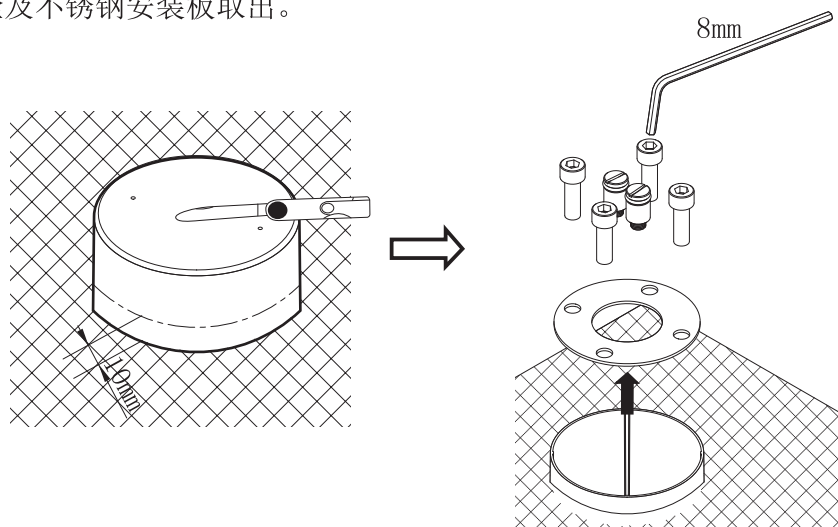
地面铺装:

■灌装水泥及地面铺装后的高度,应在保护套侧面表示的最大和最小范围内。注意水泥或灰浆等不要进入到保护套内侧。



保护套的切除:

■将保护套在高出地面10mm以上的地方切除,从台座中,将塞盖、螺栓及不锈钢安装板取出。

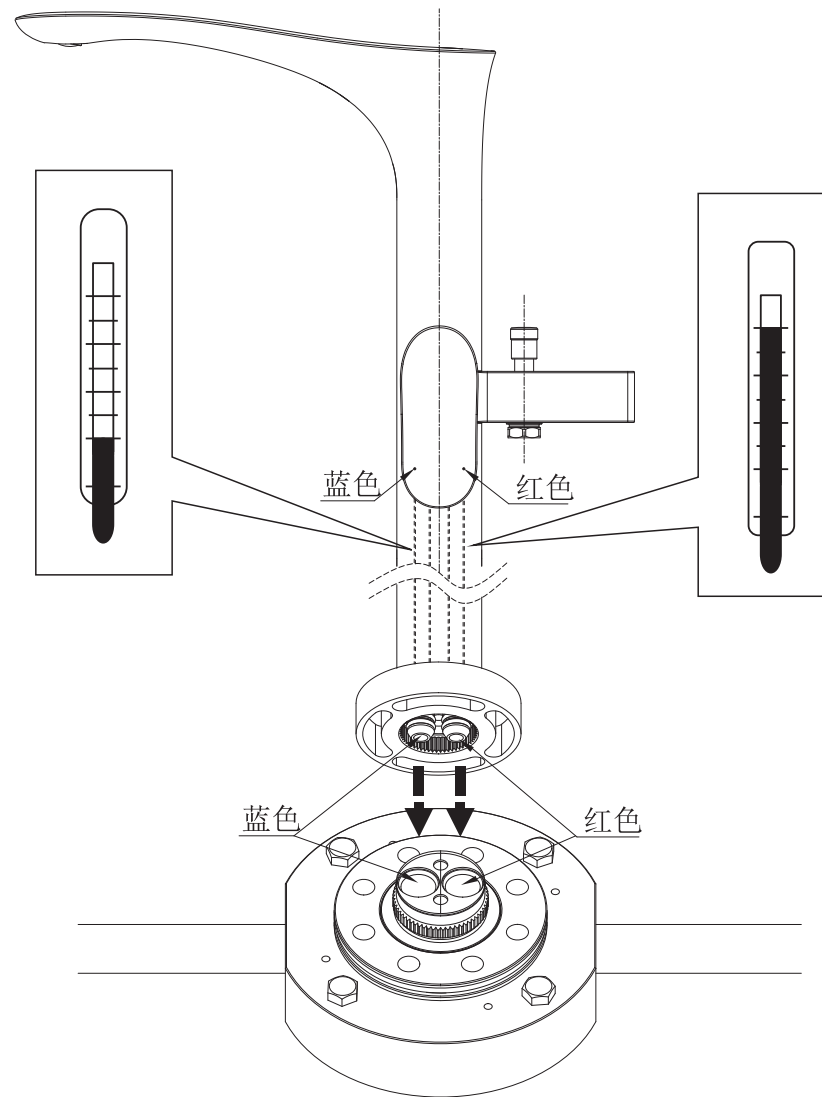


※超出龙头装饰盖的安装范围,因为会造成无法正常安装,因此铺装地面时一定要充分注意确认。

水嘴的安装

龙头本体的安装: TBG01306*/TBG02306*系列

■注意龙头本体的安装方向,冷热水管不要安装反,将龙头安装在台座上。

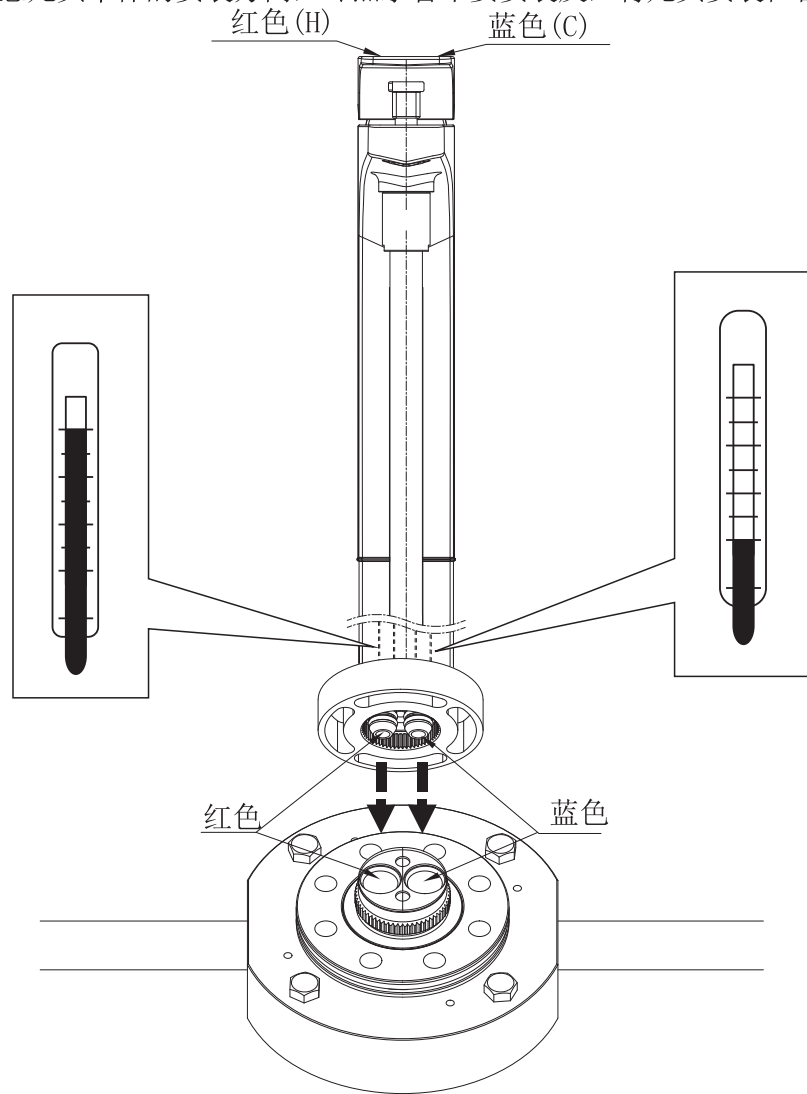


水嘴的安装

龙头本体的安装:

TBG07306*/TBG08306*/TBG09306*/TBG10306*/TBG11306*/TBP03301*系列

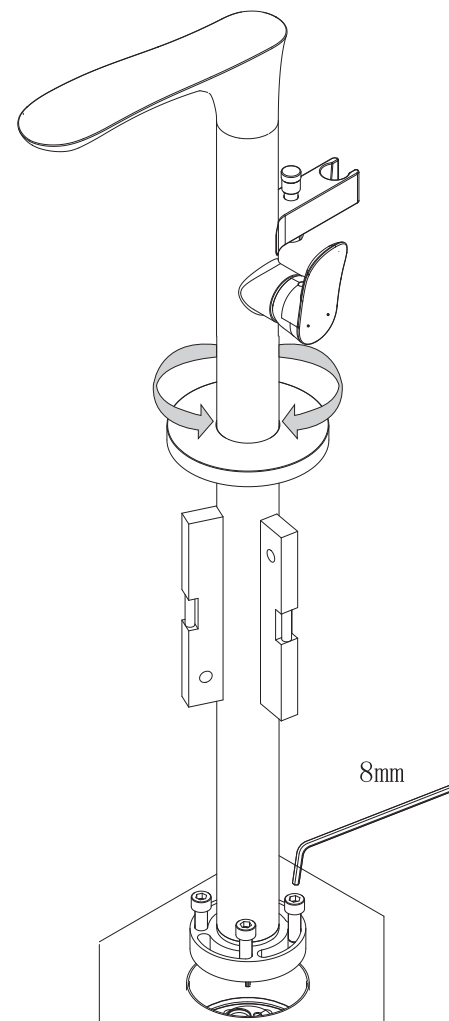
■注意龙头本体的安装方向，冷热水管不要安装反，将龙头安装在台座上。



水嘴的安装

■根据浴缸的位置，调整龙头吐水口的方向。确保龙头本体垂直安装后，使用龙头配套的螺栓固定。

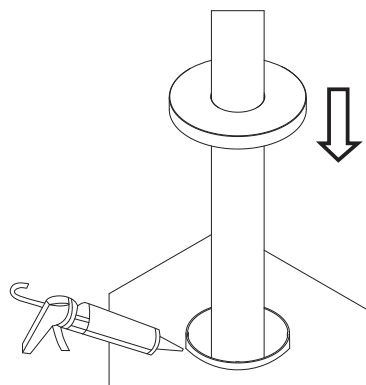
■龙头本体确认无晃动音，手柄关闭状态通水，确认连接部无漏水等。



水嘴的安装

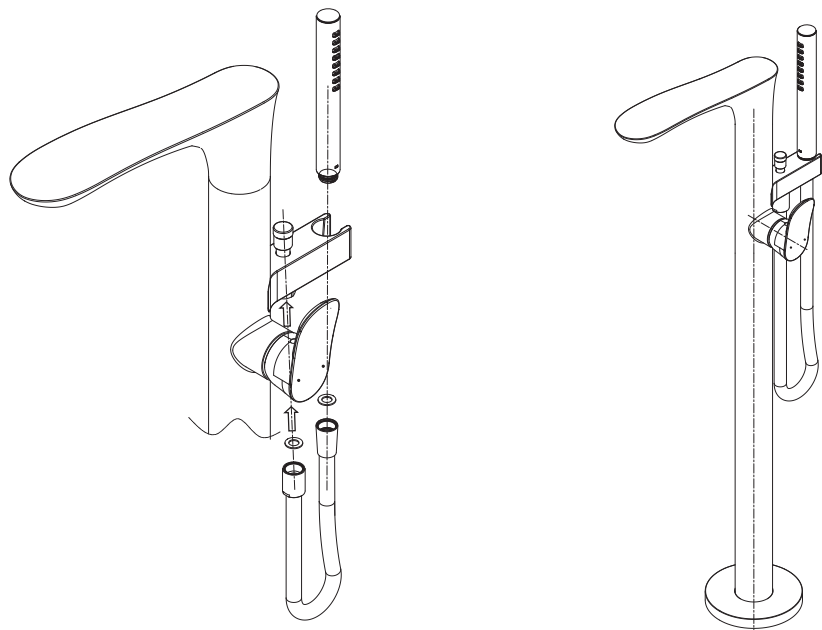
缝隙填充:

■ 保护套和地面之间的缝隙，用玻璃胶填充，做防水处理后，将装饰盖落下，靠在地面上。注意不要划伤本体部。



手持花洒、花洒软管的安装:

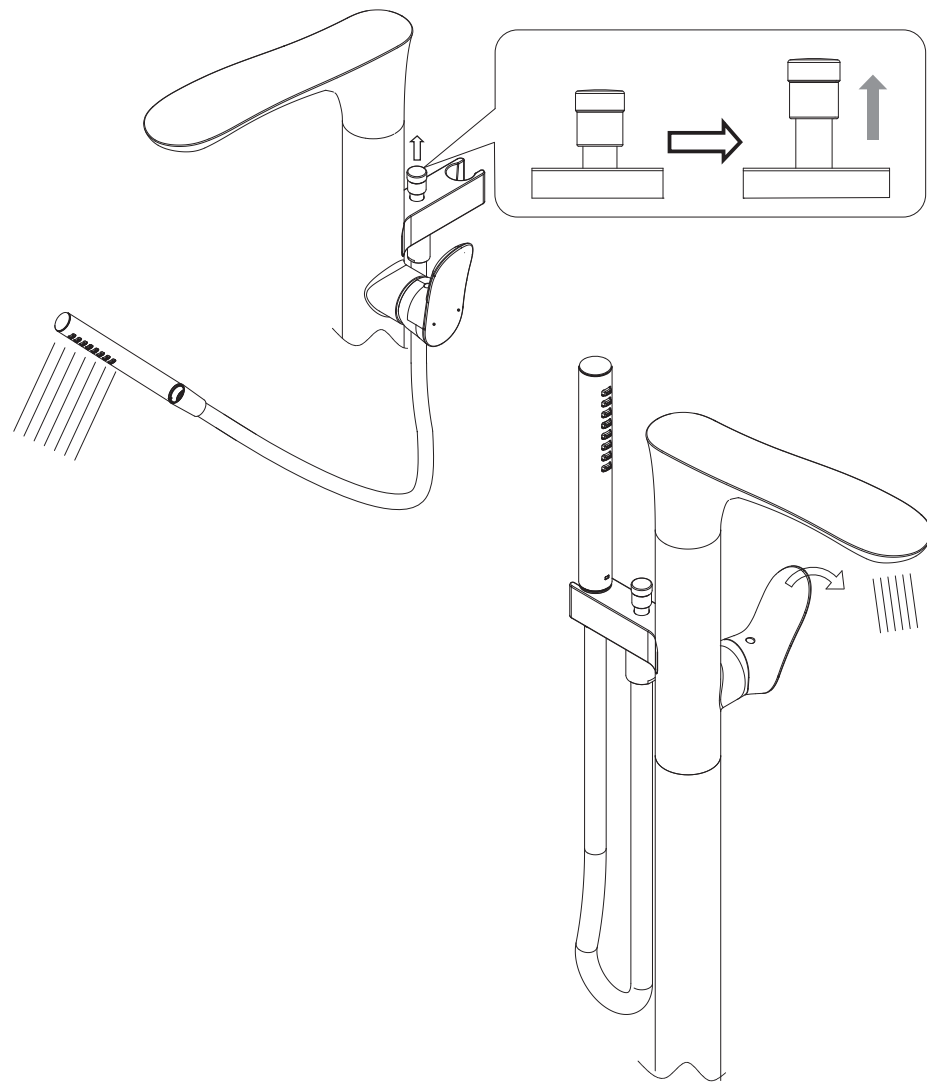
■ 确认垫片装入后，将花洒软管和手持花洒安装，安装完了。



水嘴的安装

吐水确认:

■ 开启总闸，对吐水口及手持花洒进行通水确认。而且，软管连接部、缝隙处等确认没有漏水。



生产厂家与销售商

执行标准：GB 18145-2014、GB 28378-2019

产品型号：见包装箱上的标签

产品名称：见包装箱上的标签

生产日期：见包装箱上的标签

组装工厂：东陶（大连）有限公司

电 话：（0411）87624383

厂 址：大连经济技术开发区东北二街17号

东陶(中国)有限公司

全国售后服务电话：800-820-9787 (固定电话)
400-820-9787 (手机用户)

销售商：东陶(中国)有限公司

地 址：北京市朝阳区光华路1号 北京嘉里中心北楼1915室
网 址：www.toto.com.cn

Table of Contents

Table of Contents

Table of Contents 1

Specification 2

Use Conditions and Attention
on Installation 3

Attention and Maintenance for
Installation 4

Installation completion diagram 5~13

Installation of Spout 14~24

Specification

Specification	
Main Body of the Spout (including joint, fixing screw, expansion pipe)	1 set
Embedded part of faucet (including joint, fixing screw, expansion pipe)	1 set
Installation Manual	1 copy
User Manual	1 copy
Products using this specification include:	
TBG01306* "GO" Floor Standing Bathtub Filler with Hand Shower	
TBG02306* "GO" Floor Standing Bathtub Filler with Hand Shower	
TBG07306* "GE" Floor Standing Bathtub Filler with Hand Shower	
TBG08306* "GC" Floor Standing Bathtub Filler with Hand Shower	
TBG09306* "GM" Floor Standing Bathtub Filler with Hand Shower	
TBG10306* "GB" Floor Standing Bathtub Filler with Hand Shower	
TBG11306* "GF" Floor Standing Bathtub Filler with Hand Shower	
TBP03301* "ZA" Floor Standing Bathtub Filler with Hand Shower	
TBN01105* "GC" Floor Standing Bathtub Filler Base	

Use Conditions and Attention on Installation

Use Conditions

1. Pressure for cold water *hot water supplying
Minimum pressure.....0.05 MPa (flow pressure)
Maximum pressure.....1.0 MPa (static pressure)
Recommended pressure.....0.1 ~ 0.5 MPa (flow pressure)
2. The water supply temperature is between 4℃ and 90℃. It is recommended to use hot water temperature of 60 ± 5℃. Do not use steam when supplying hot water.
3. Ambient temperature of the use above 0℃. If it is lower than 0℃, the spout will have some issues such as deformations, cracking, etc.
4. To prevent internal damage to the shower, the temperature of the water laterally flowed from the showerhead should not exceed 60℃. The recommended temperature is below 45℃.
5. When it is not used for a long time, it may cause the inside and outside of the spout to rust and corrode, leading to malfunction.
6. If you need to dispose of this product, do not dispose of it as general household waste. Please follow the regulations to properly dispose, recover and recycle it through an independent recycling system.
7. The products stated in the Manual have a cleaning function.

Attention on Installation



Warning: Indicates that if you overlook this sign, causing misoperation, it may result in serious injury or death.



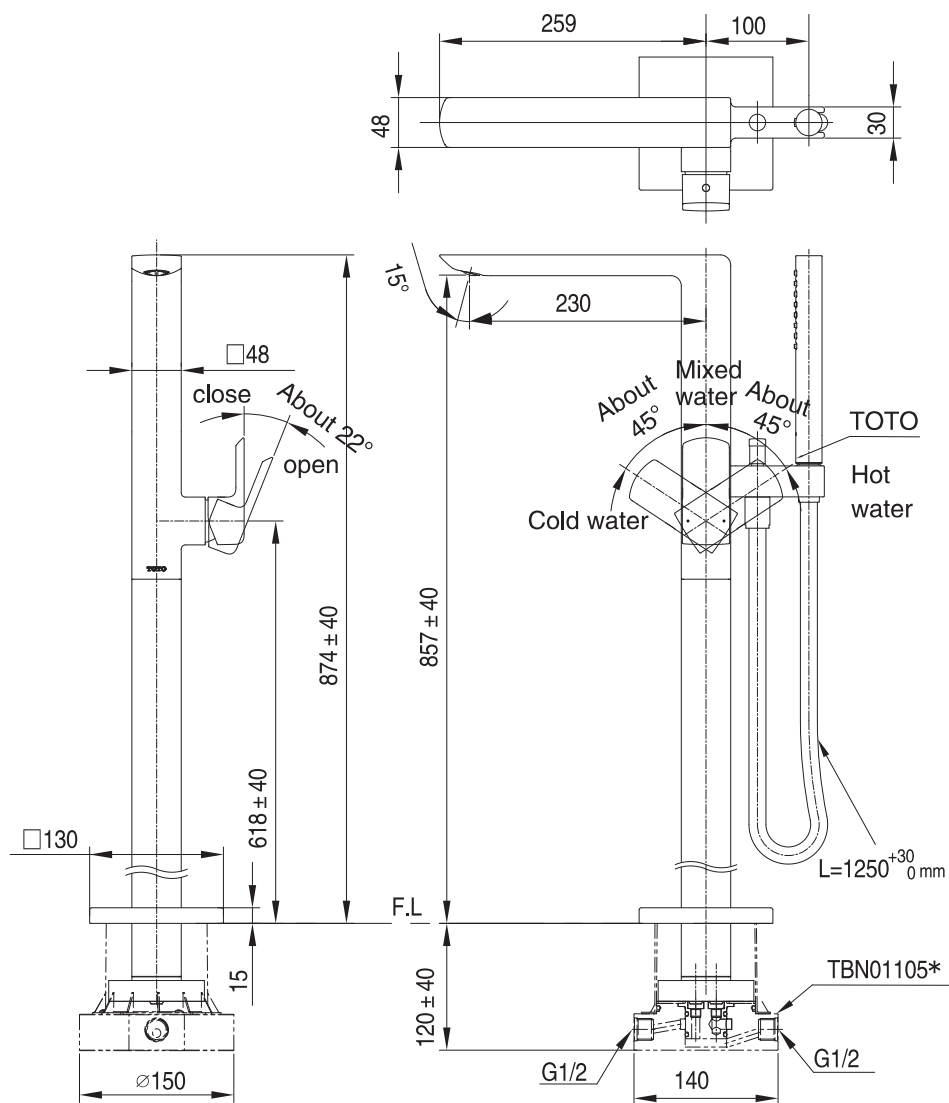
Attention: Indicates that if you overlook this sign, causing misoperation, it may cause personal injury or property damage.

Warning

1. As one side of the spout to supply hot water is in a high-temperature state, do not let the skin be directly in contact with the surface of the hardware fitting; otherwise it may cause burn injuries.
2. Do not assemble cold * hot water tubing incorrectly; otherwise it may cause burn injuries.
3. Do not use steam when supplying hot water; otherwise it may cause burn injuries.
4. When you switch from the water outlet side to the shower side, or from the shower side to the water outlet side directly, the water temperature will change, so please use the water after feeling the water temperature with the hand, otherwise scalding may occur.

Installation completion diagram

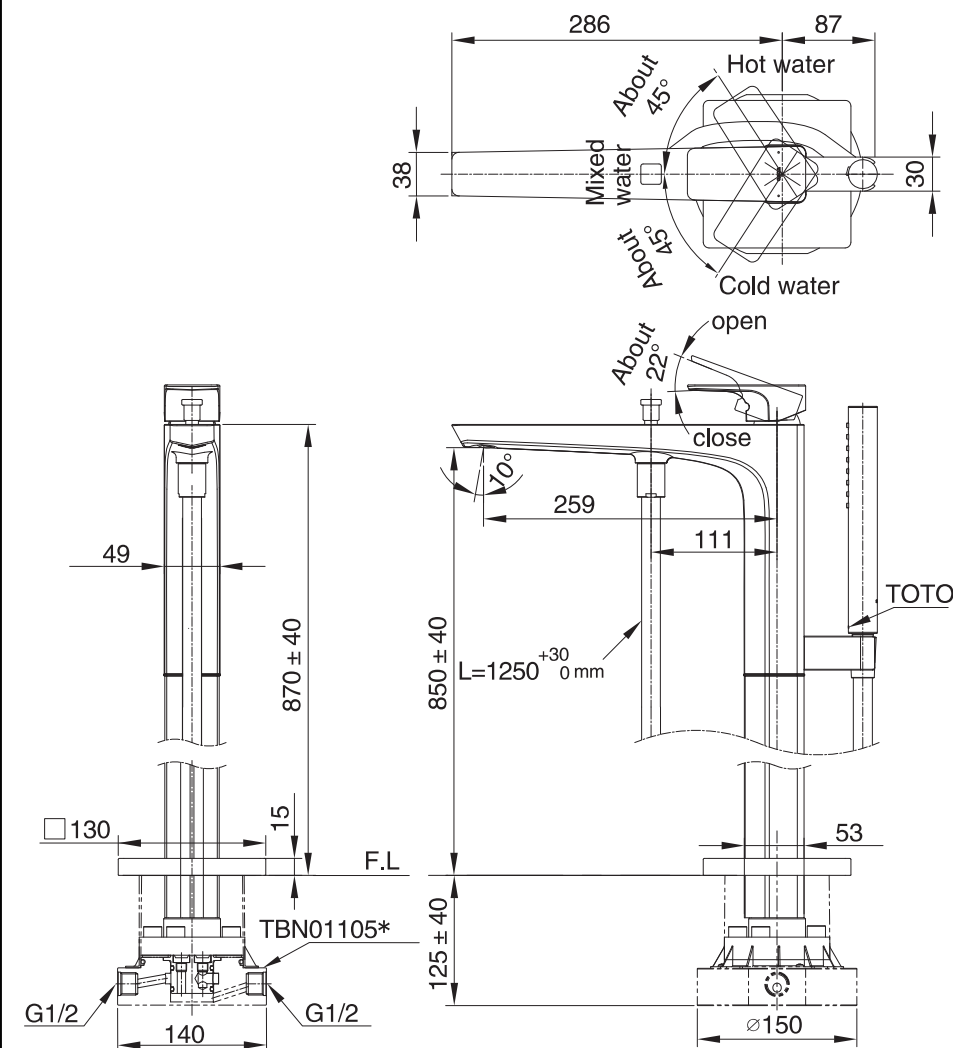
Example:TBG02306*



Note: The unit of size in the figure is mm. The size in the () is the reference size.

Installation completion diagram

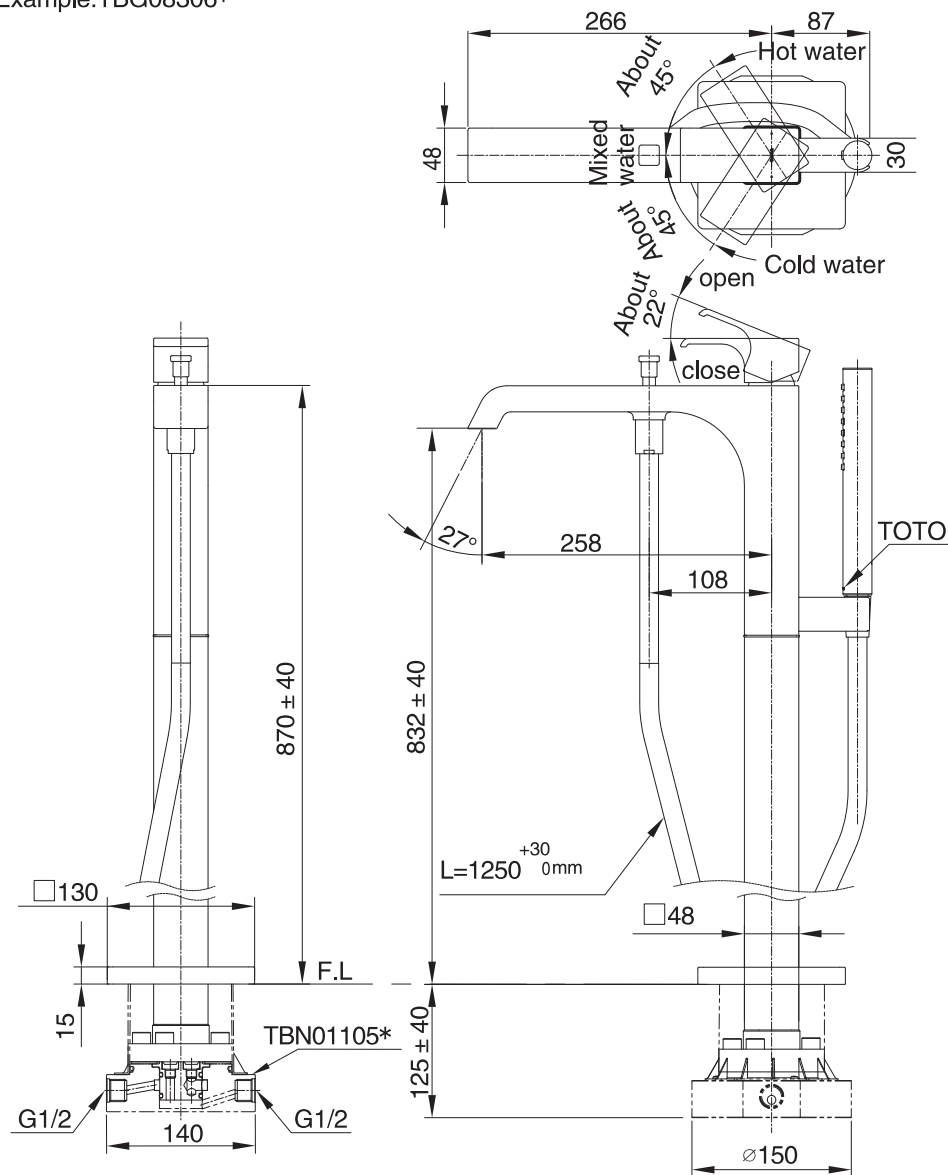
Example:TBG07306*



Note: The unit of size in the figure is mm. The size in the () is the reference size.

Installation completion diagram

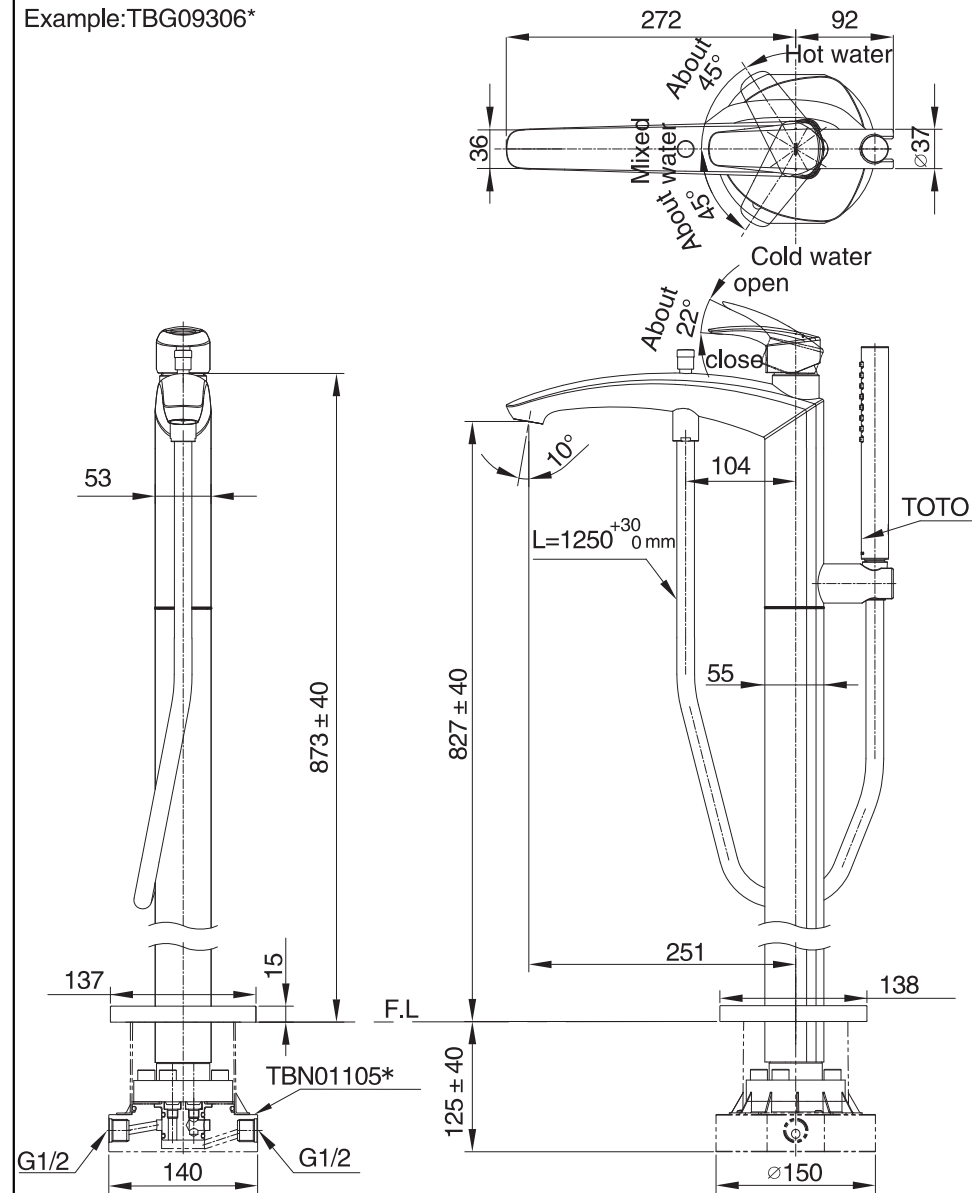
Example: TBG08306*



Note: The unit of size in the figure is mm . The size in the () is the reference size.

Installation completion diagram

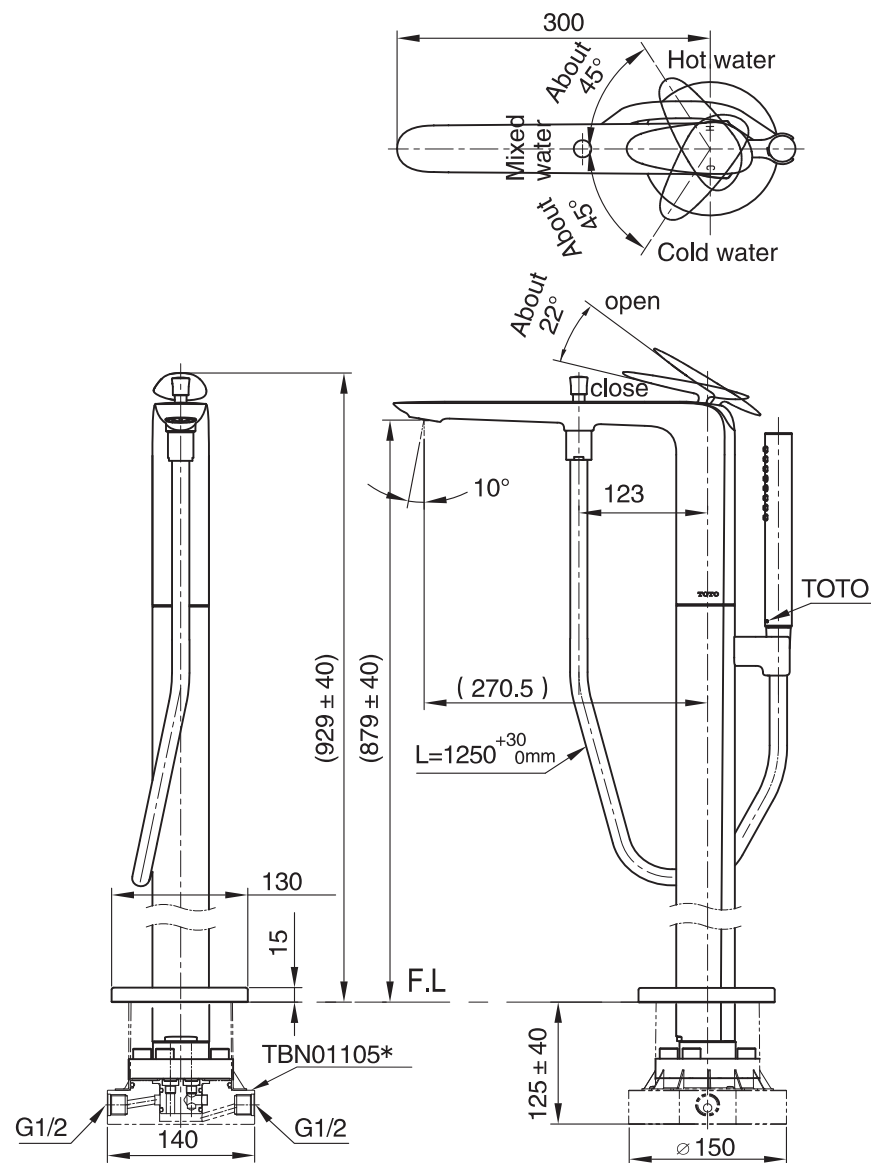
Example: TBG09306*



Note: The unit of size in the figure is mm . The size in the () is the reference size.

Installation completion diagram

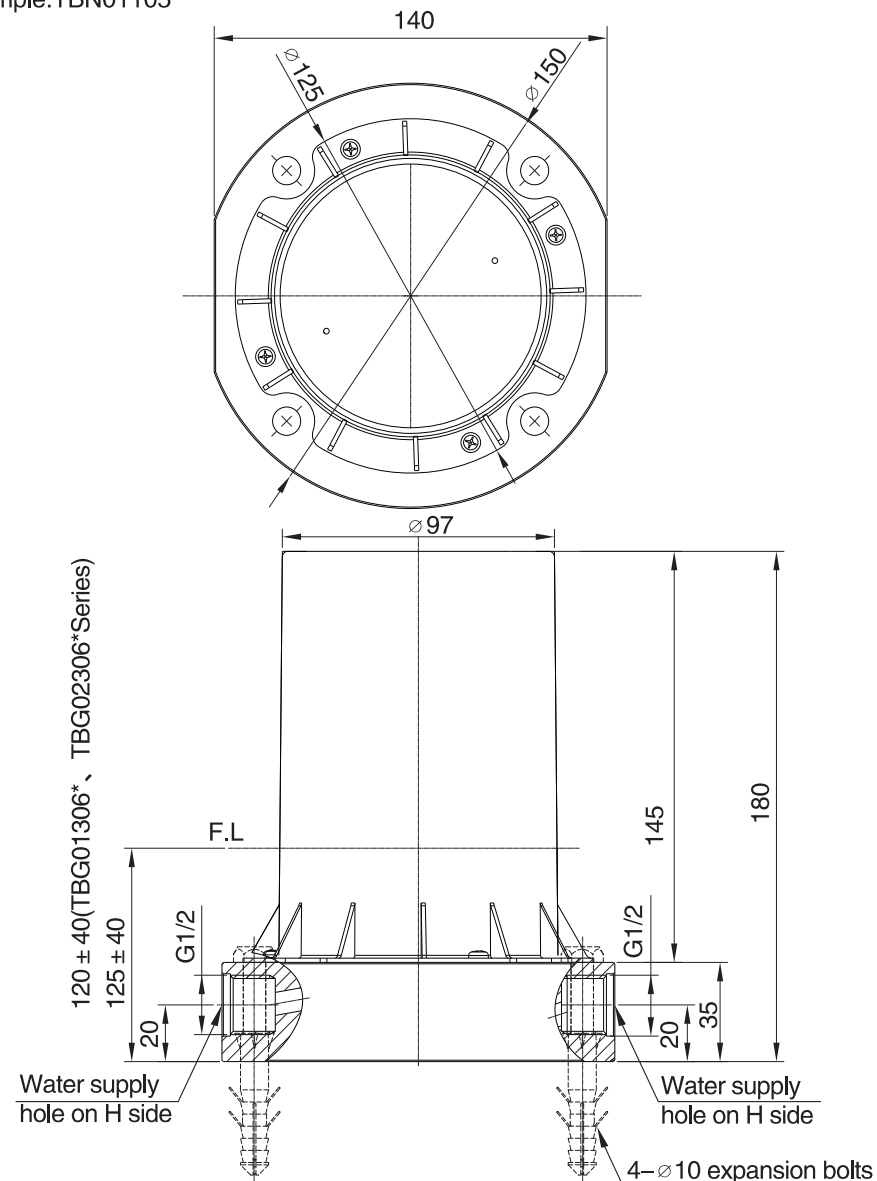
Example: TBP03301*



Note: The unit of size in the figure is mm . The size in the () is the reference size.

Installation completion diagram

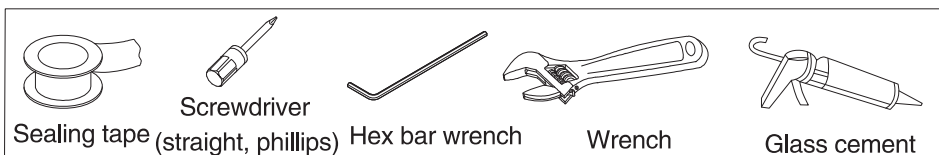
Example: TBN01105*



Note: The unit of size in the figure is mm . The size in the () is the reference size.

Installation of Spout

Tools to be prepared beforehand



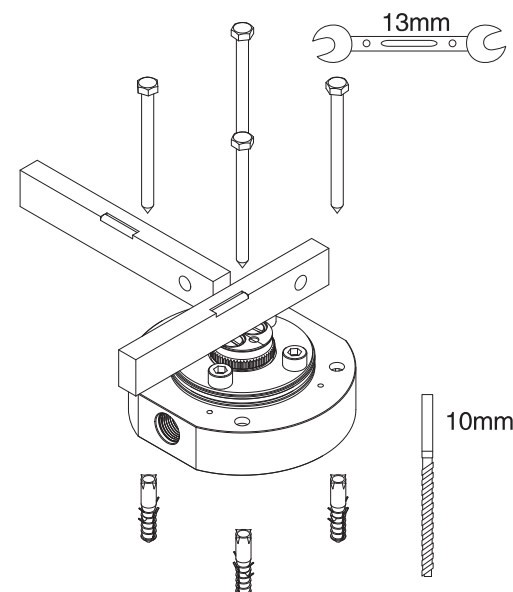
Confirmation before installation

- The faucet water outlet position is determined according to the burial position. Please pay sufficient attention to the installation position.
- In case that the water supply pressure exceeds 1.0MPa, please use the pressure-reducing valve available on the market for pressure reduction by 0.5MPa. For the purpose of comfortable faucet use, it is recommended to use a pressure of 0.5MPa.
- In case that a high flow is used in a high-pressure site, etc., it is possible that the force for switching operation is large. In this case, please operate by reducing the flow through the handle.
- To prevent scalding resulting from operation, the water supply pressure on the cold water side must be higher than that on the hot water side, or the cold water supply pressure and hot water supply pressure are the same. Moreover, the hot water supply pressure is pressurized. Furthermore, in the circumstance that the hot water supply pressure is increased, the water supply pressure on the hot water side after pressurization must be lower than the water supply pressure on the cold water side.
- To prevent scalding, the water output temperature of water heater should be set no higher than 90°C. To ensure a comfortable water output temperature, it is recommended to set the hot water output temperature as 60°C.
- To reduce heat loss during flow in water pipe, the piping starting from the water heater should be shortest in distance and the hot water supply pipe must be wrapped with insulating material.
- Due to water supply inspection before packaging, water may remain in the product and this is not a product problem.

Installation of Spout

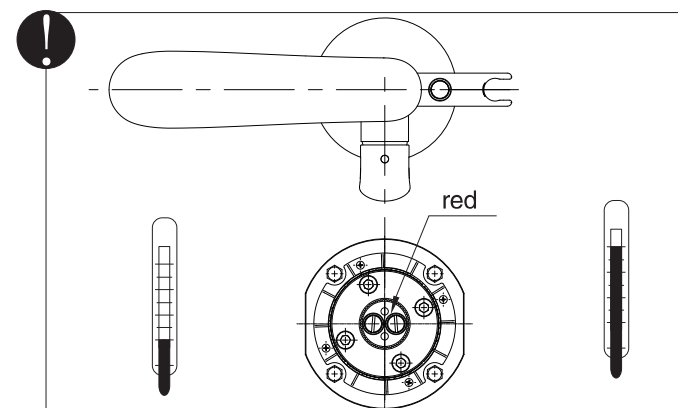
Pedestal setup:

■ After confirming the labels C, H of the pedestal, fix after placing horizontally according to the position of the water supply pipes on the hot water side and cold water side. After the pedestal is fixed, remove the protective cover with a tool. As the protective cover and screws are to be used, do not lose them.



※ The body water outlet direction is opposite to the red indication on the pedestal joint. After the bath tub setup position is confirmed, fix the pedestal after the approximate setup direction is determined.

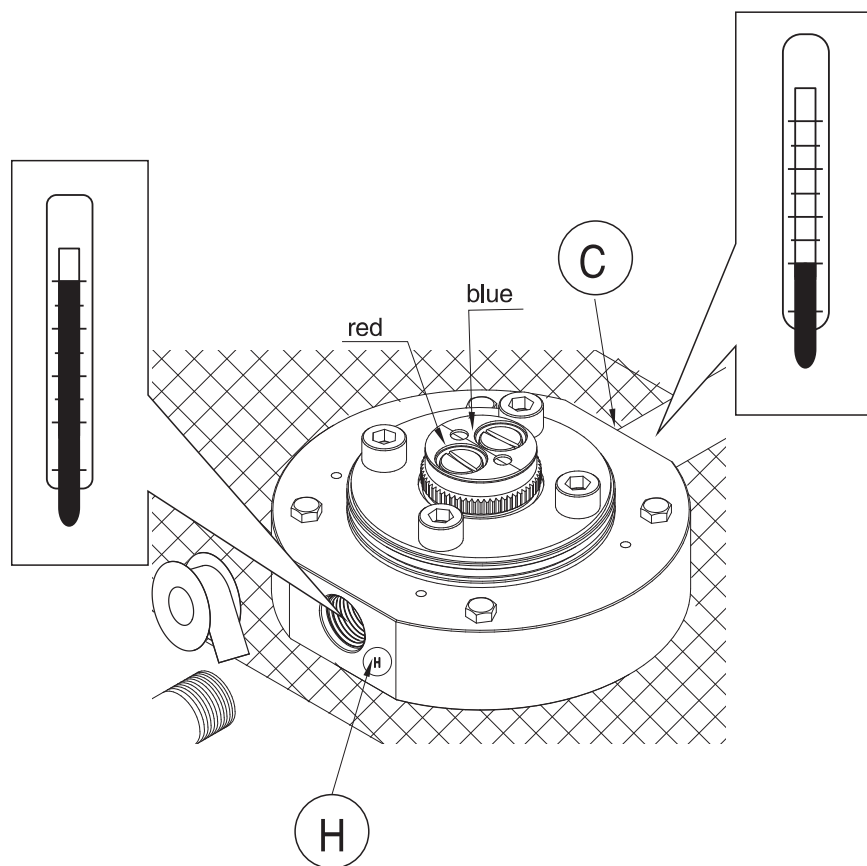
※ In fixing the faucet body, the water outlet direction can also be adjusted.



Installation of Spout

Piping connection:

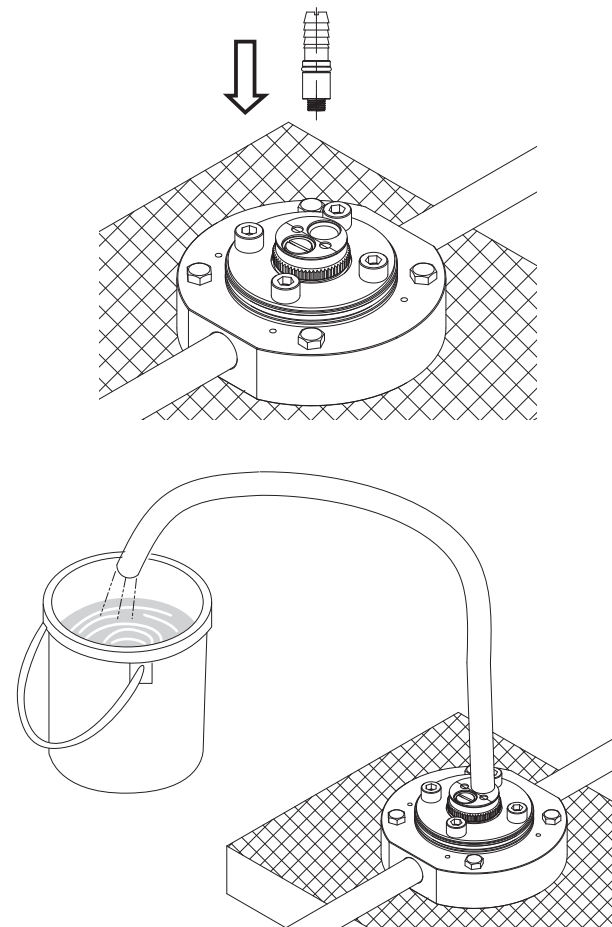
■ In piping connection, confirm the marks C, H on the pedestal. Take care not to reverse the positions of the water supply pipes on the hot water side and cold water side. Connect and use sealant or sealing tape, etc. to seal and fix sufficiently.



Installation of Spout

Cleaning of the inside of the hot water supply pipe and cold water supply pipe:

■ Use the hose joint provided. Connect with the hose and the pedestal available on the market. Wash the hot water and cold water supply pipes to allow the debris, sand, etc. therein to flow out.



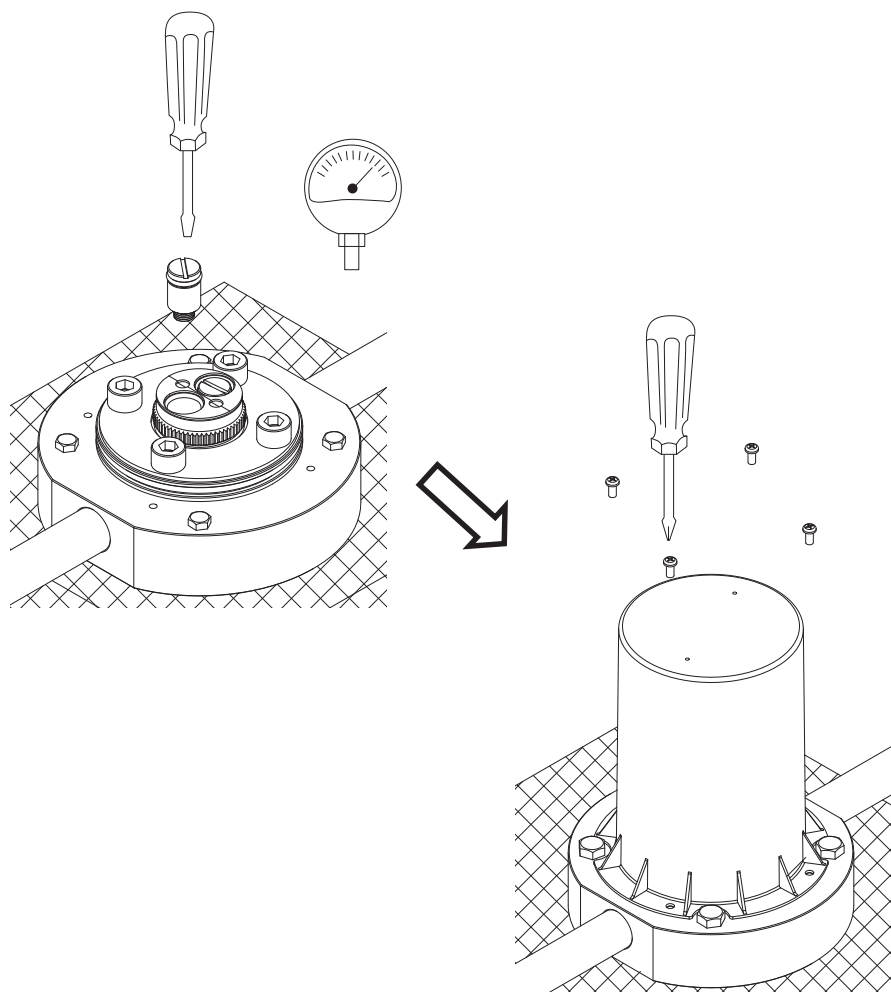
※ If you do not wash the hot water and cold water supply pipes, the dirt, sand, etc. in the pipes may clog the filter net. The following matters are easy to occur.

① The water output amount is small. ② The temperature adjustment is not smooth.

Installation of Spout

Pressure test:

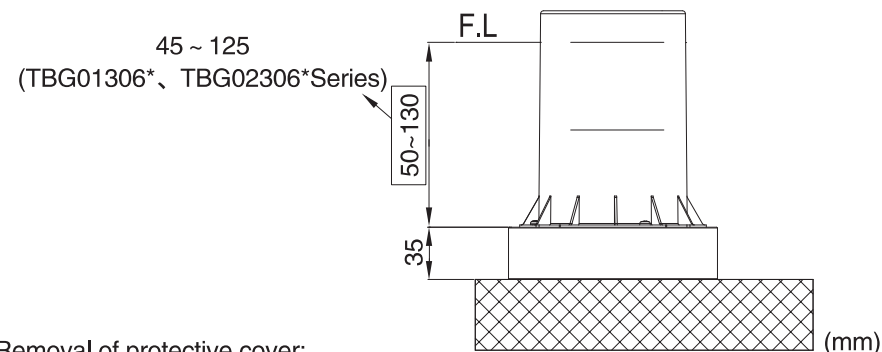
■ Conduct pressure test. After confirming that there is no water leakage from the piping connection part, etc., tighten with screws after installing the protective cover. If possible, the duration with standing a static pressure of 1.6MPa is 1 minute.



Installation of Spout

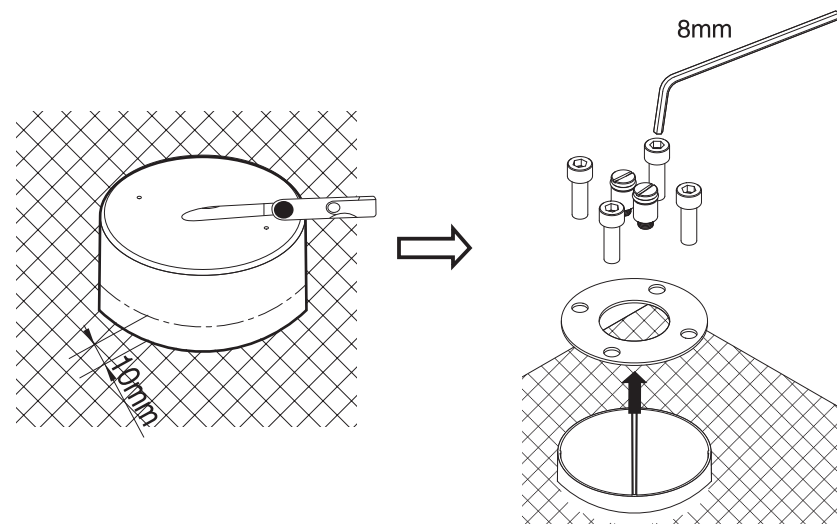
Floor laying:

■ The height after cement filling and floor laying should be within the maximum and minimum range as indicated on the protective cover side. Be careful not to allow any cement or mortar to enter into the inner side of the protective cover.



Removal of protective cover:

■ Remove the protective cover at the location more than 10mm above the floor. Take out the plug cover, bolt and stainless steel mounting plate from the pedestal.

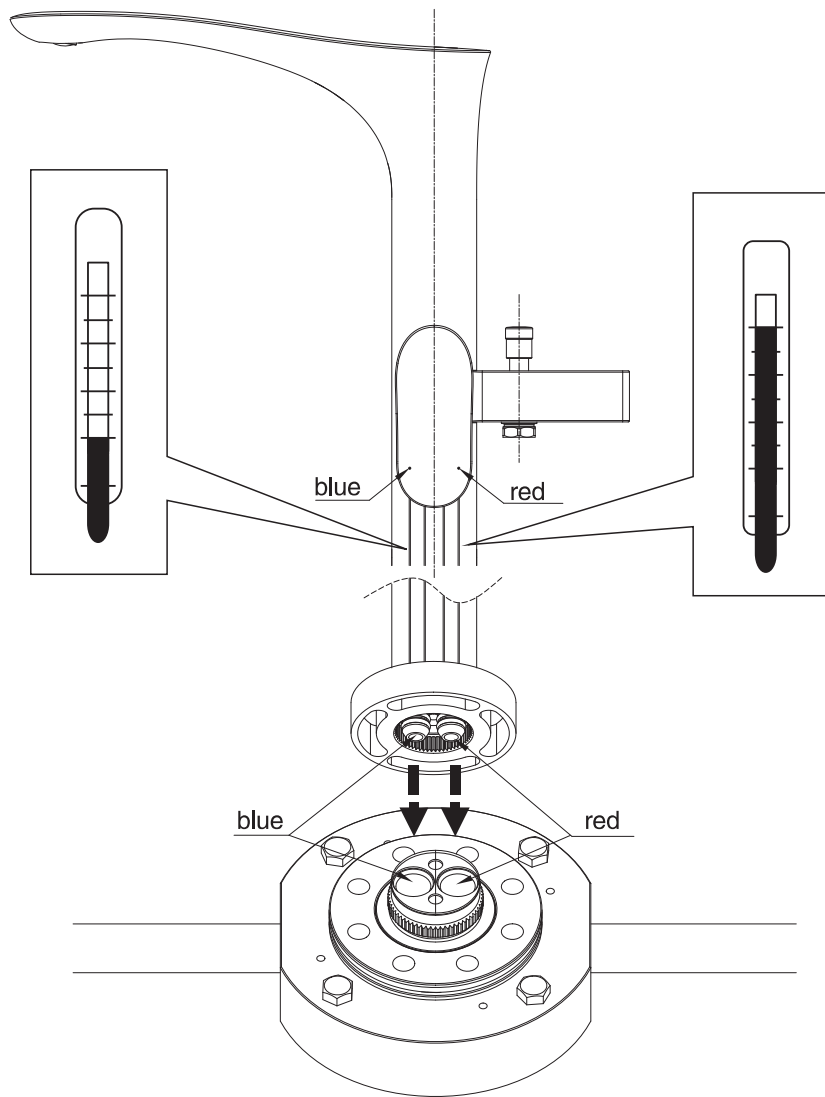


※ As going beyond the installation range of the faucet decorating cover may result in normal installation being impossible, be sure to pay sufficient attention to confirmation in floor laying.

Installation of Spout

Installation of faucet body: TBG01306*/TBG02306*Series

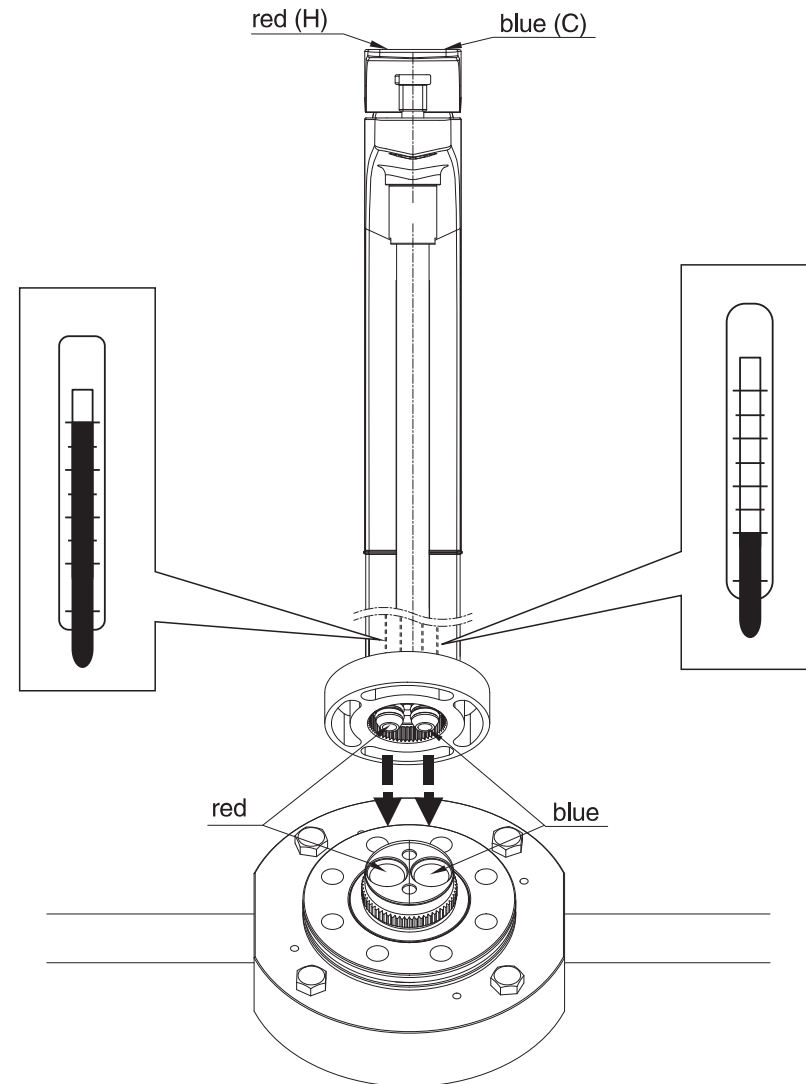
■ Pay attention to the faucet body installation direction. Do not reverse the cold water and hot water pipes in installation. Install the faucet on the pedestal.



Installation of Spout

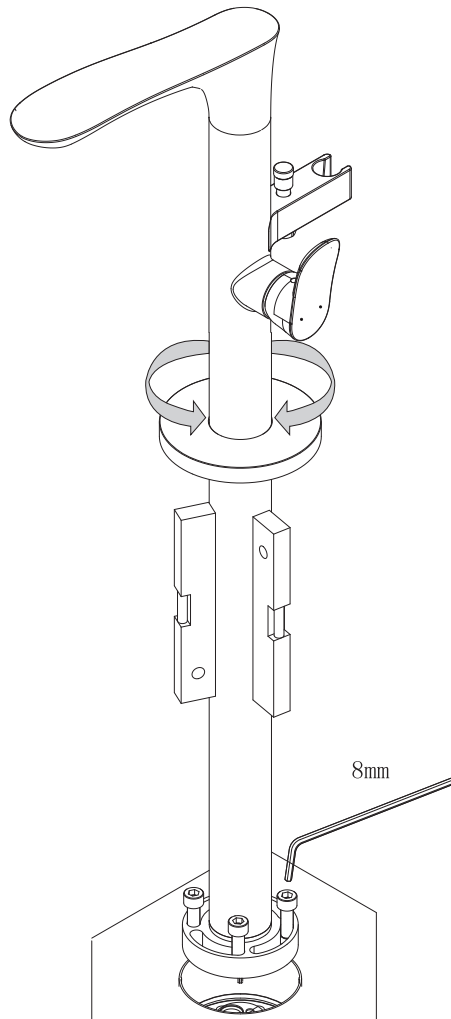
Installation of faucet body: TBG07306*/TBG08306*/TBG09306*/TBG10306*/TBG11306*/TBP03301*Series

■ Pay attention to the faucet body installation direction. Do not reverse the cold water and hot water pipes in installation. Install the faucet on the pedestal.



Installation of Spout

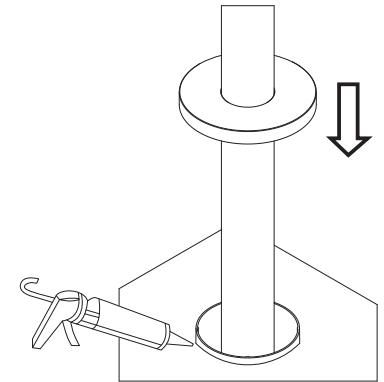
- Adjust the faucet water outlet direction according to the bath tub position. Ensure that the supporting bolt for the faucet is used to fix after faucet body is installed perpendicularly.
- Confirm that the faucet body has no swing sound. Supply water under the condition that the handle is in off position. Confirm that no water leakage occurs to any connection.



Installation of Spout

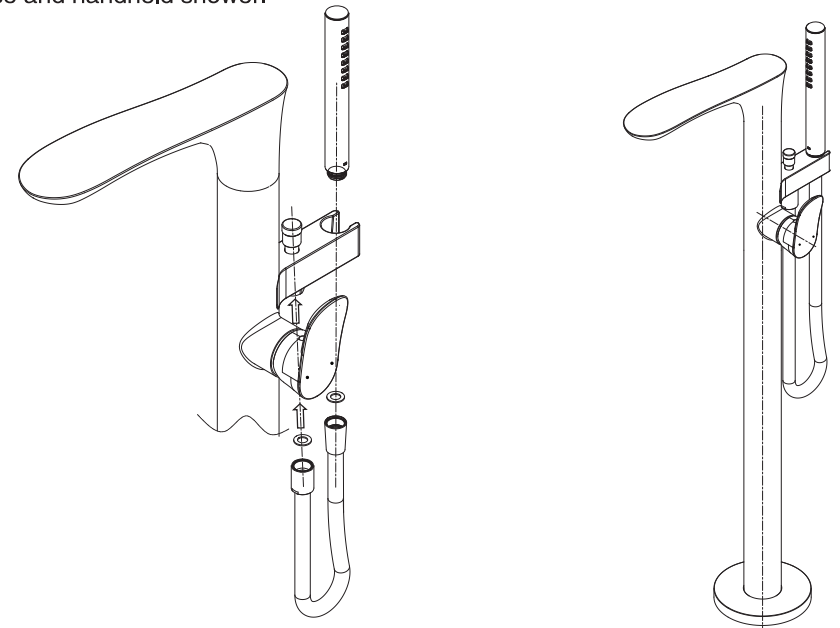
Gap filling:

- Use glass cement to fill the gap between the protective cover and floor. After waterproofing treatment, lower the decorating cover against the floor. Be careful not to scratch the body part.



Installation of hand-held shower and shower hose:

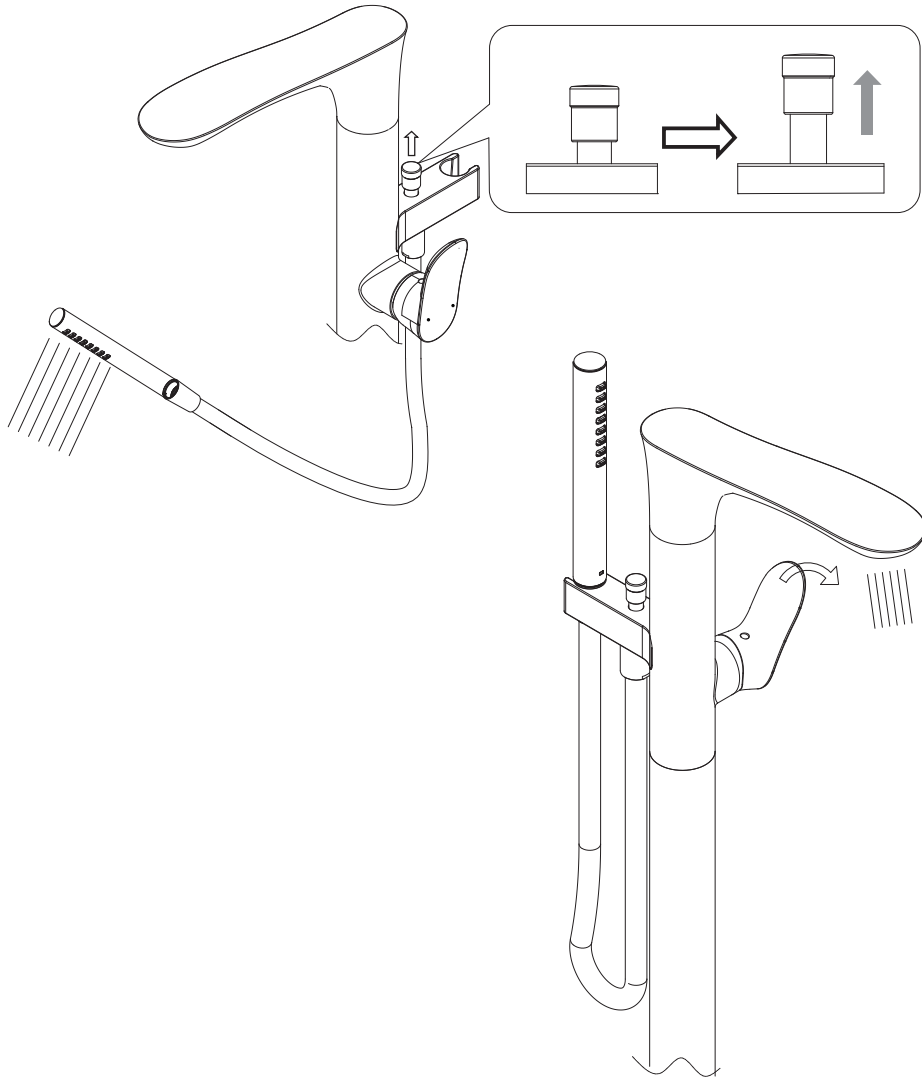
- After confirming that the gasket is installed, complete installation of the shower hose and handheld shower.



Installation of Spout

Water output confirmation:

■ Turn on the main switch and make a water supply confirmation to the water outlet and handheld shower. Furthermore, confirm that there is no water leakage from the hose connection part, gap, etc.



TOTO Asia Oceania Pte. Ltd.

Telephone: 65-6744-6955

FAX: 65-6841-0819

Address: 10 Eunos Road 8 #12-07 Singapore Post Centre
Singapore 408600

Website: asia.toto.com

TOTO KOREA LTD.

전화번호 : (02)-3141-8236

FAX 번호 : (02)-3141-8240

주소 : 서울시 마포구 토정로 112(상수동, 로이코빌딩 3층)

홈페이지 : <http://www.totokr.co.kr>