

# 施工说明书 Instructions for construction

安装产品前请仔细阅读本施工说明书，并保留备用。  
Before product installation, read these instructions for construction carefully and retain it for future reference.

# TOTO

# TOTO

OG3801Y(A)  
2021.09

# 目录

## 目 录

|                   |      |
|-------------------|------|
| 目 录.....          | 1    |
| 明细单.....          | 2    |
| 使用条件与施工上的注意 ..... | 3    |
| 施工上的注意和保养 .....   | 4    |
| 安装完成图.....        | 5-7  |
| 水嘴的安装.....        | 8-10 |
| 生产厂家与经销商.....     | 11   |

# 明细单

## 明细单

|            |                |
|------------|----------------|
| 水嘴主体部..... | 1套             |
| 手柄部.....   | 1套             |
| 淋 浴 器..... | 1套             |
| 淋浴器台座..... | 1套             |
| 耐压软管.....  | 5根             |
|            | (DB357CR场合为4根) |
| 施工说明书..... | 1本             |
| 使用说明书..... | 1本             |

使用本明细单的产品包括：

DB356CR 铜合金台式单柄双控浴缸水嘴(可转换・带抽取式花洒)



DB357CR 铜合金台式单柄双控浴缸水嘴(可转换・带抽取式花洒)

# 使用条件与施工上的注意

## 使用条件

- 1. 供冷水\*热水压力：  
最低压力……………0.05MPa（流动压）  
最高压力……………1.0MPa（静压）
- 2. 供水温度4℃～90℃，建议使用热水温度60±5℃，供热水请勿使用蒸汽。
- 3. 使用环境温度0℃以上。如果低于0℃，水嘴会出现变形、冻裂等现象。
- 4. 为防止花洒内部损坏，花洒侧吐水温度不得超过60℃，建议使用温度45℃以下。
- 5. 长时间不使用时，可能导致水嘴内部及外部锈蚀不能使用等现象。
- 6. 如果您需要废弃本产品，请勿将其作为一般生活垃圾处理，请依照法规经由独立的回收体系进行合适的处理、恢复和回收。
- 7. 本说明书中的产品具有清洗功能。

## 施工上的注意

-  **警告** 表示如果无视此标志而误操作时，有可能造成人员重伤或死亡。
-  **注意** 表示如果无视此标志而误操作时，有可能造成人身伤害或财产损失。

### 警告

- 1. 水嘴的供热水一侧处于高温状态，请勿使皮肤直接接触五金配件表面，否则可能会烫伤。
- 2. 请勿配反冷\*热水配管，否则可能会烫伤。
- 3. 供热水请勿使用蒸汽，否则可能会烫伤。
- 4. 耐压软管在出厂前已组装好，客户在安装使用时请勿拧动六角螺母，否则可能会造成漏水等不良。
- 5. 如果客户不使用我司水嘴自带的进水口过滤网，可能会出现阀芯因异物进入而导致的漏水或破损的风险。

# 施工上的注意和保养

## 注意

- 1. 由于陶瓷阀芯是较精密的部件，请勿擅自分解，否则可能会造成漏水等不良。
- 2. 请勿撞击本产品，否则可能会造成故障、漏水。
- 3. 高压力、大流量使用场合下，切替操作力会有变大的可能。此时，请通过调节手柄降低流量的方式进行操作。
- 4. 随着产品式样的不断更新，实物存在与图示不符的情况，但基本安装、使用原理相同。
- 5. 在可能结冰的场所使用时，要切实做好防冻措施。  
因结冰，零件破损，有可能导致漏水，造成财产损失。因结冰而造成的破损即使在保修期内也是有偿修理。请不要让产品的环境温度低于0℃。

## 防冻措施

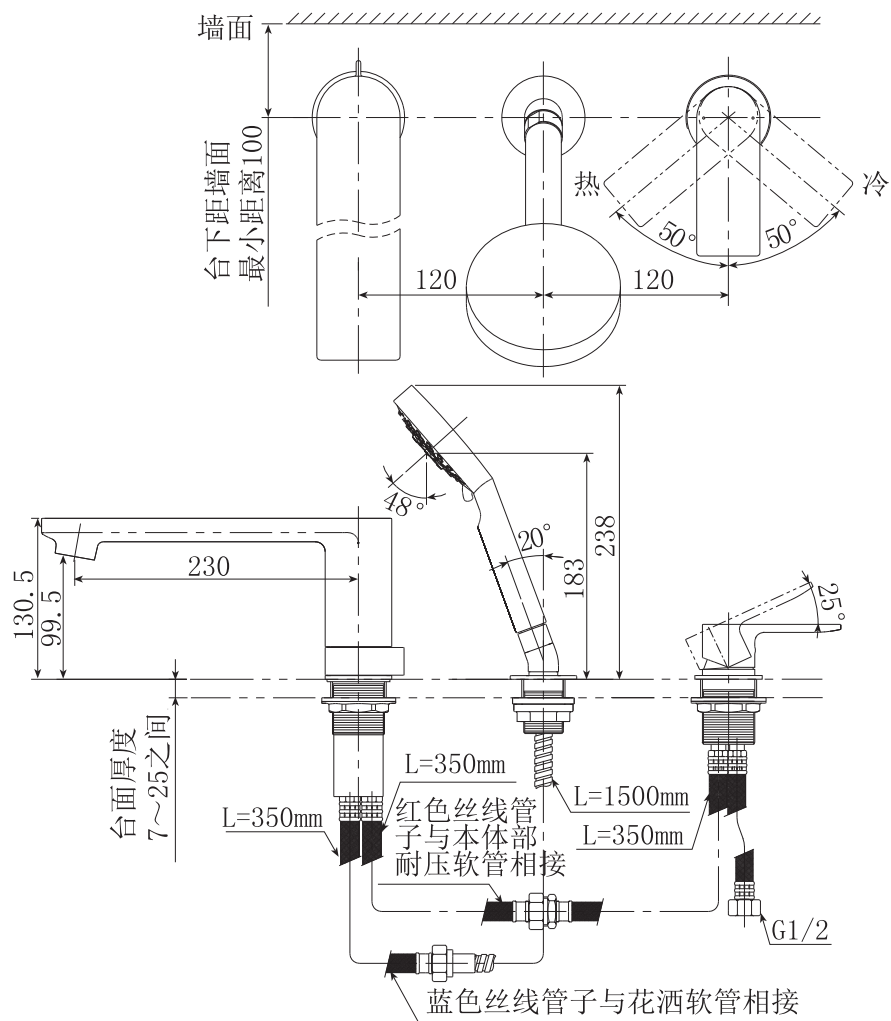
- 在可能结冰的场所使用时，要切实做好防冻措施。
- 1. 产品结冰的话零件损坏，成为漏水的原因。
- 2. 因结冰造成的零件破损即使在保修期也是有偿修理。
- 3. 施工完了后或长时间不使用时，要有预防突然降温的准备，要对产品进行结冰预防。
- 4. 因为有结冰的危险，请不要让产品周围的温度在0℃以下。

## 保养

- 为长期保持产品的美观，请用户按以下方法维护保养。
- 1. 经常用软布擦拭，间或用软布蘸水擦拭。
- 2. 当有污垢且比较明显时，请用中性洗涤剂擦拭后充分进行水洗。

## 安装完成图

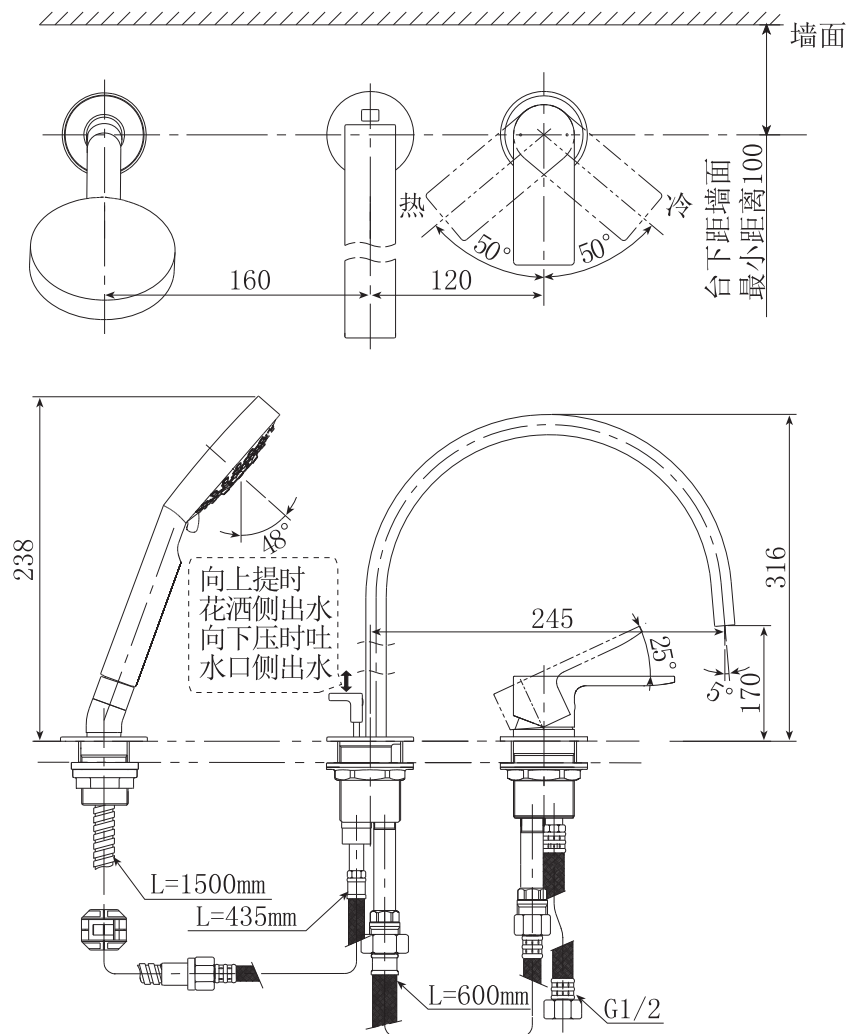
DB356CR 铜合金台式单柄双控浴缸水嘴(可转换·带抽取式花洒)



※请注意耐压软管不要接错。

## 安装完成图

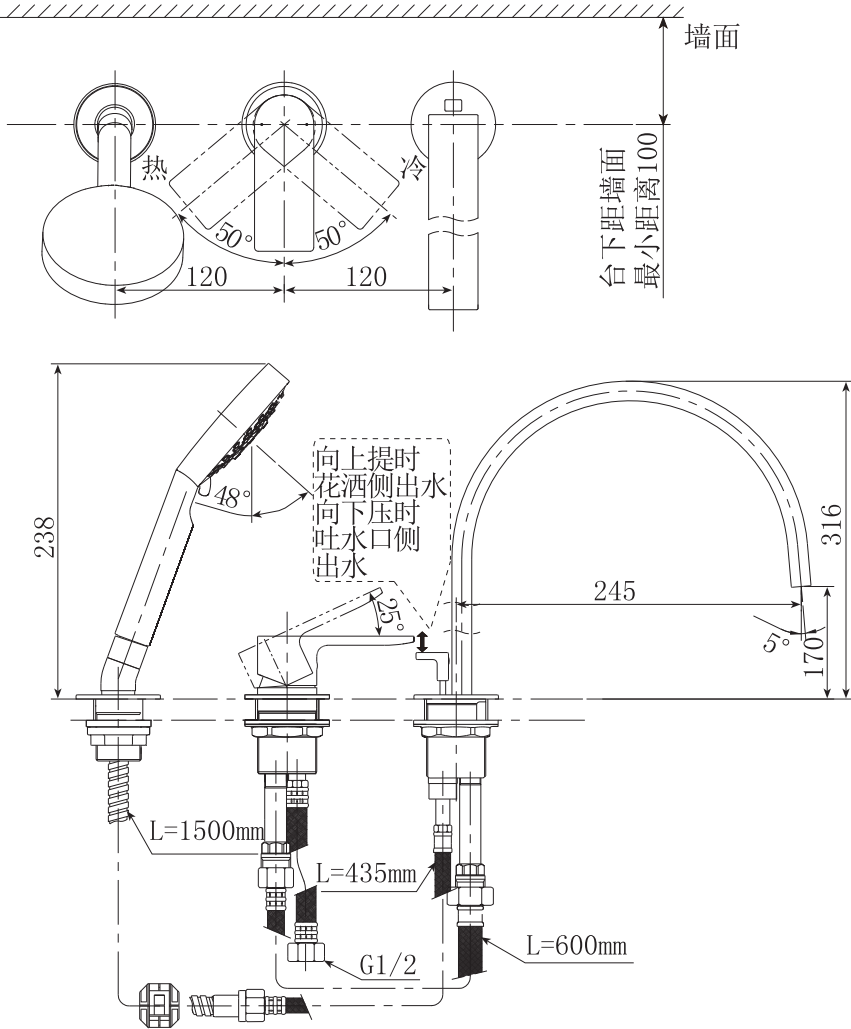
DB357CR 铜合金台式单柄双控浴缸水嘴(可转换·带抽取式花洒)  
(理石台面)





# 安装完成图

DB357CR 铜合金台式单柄双控浴缸水嘴(可转换·带抽取式花洒)  
(浴缸台面)

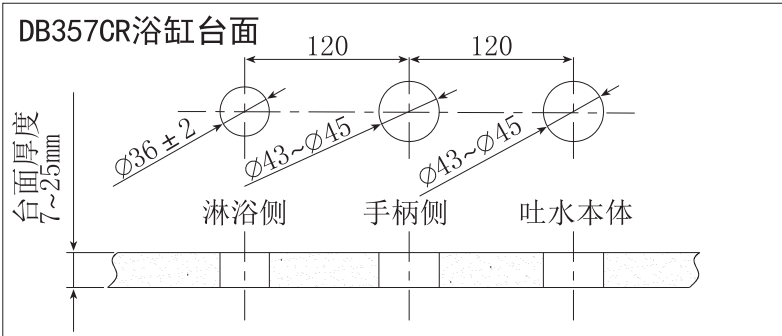
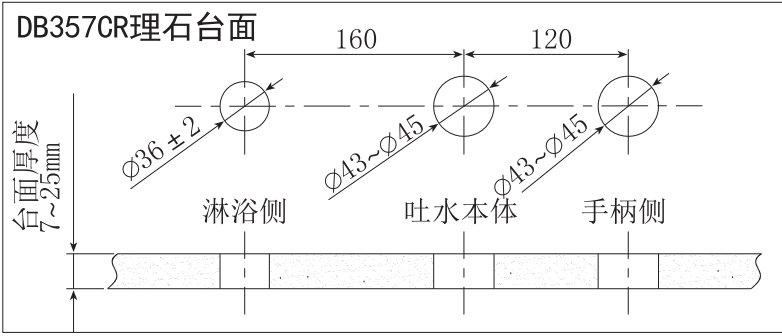
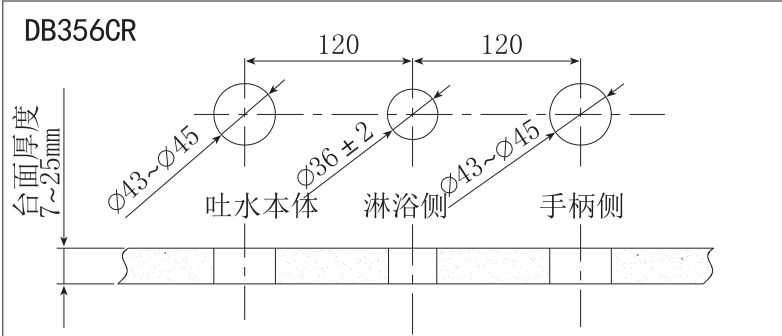


# 水嘴的安装

## 1. 供水管内的清扫

安装之前，一定要冲净供水管内的灰尘、砂砾等异物。

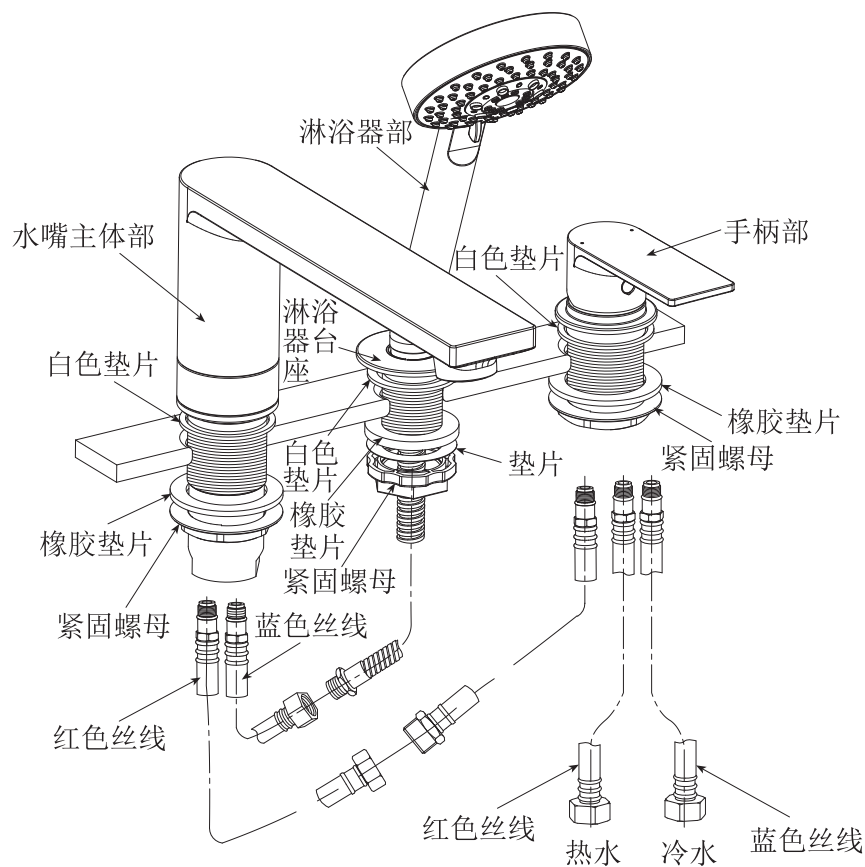
## 2. 孔的设定



# 水嘴的安装

## 3. 主体部的安装（以DB356CR为例）

在安装前必须清除安装孔周围的污物，主体的安装参照下图，具体的安装方法是：



### (1). 水嘴主体部的安装

首先将橡胶垫片和紧固螺母旋转下，然后把水嘴主体部插入安装孔中；再将橡胶垫片与紧固螺母按图示位置拧紧。

# 水嘴的安装

## (2). 淋浴部的安装

- ①如图所示将淋浴器台座插入安装孔，拧紧固定螺母
- ②如图所示将淋浴软管螺纹端穿过淋浴器台座与水嘴主体部的耐压软管充分拧紧。

## (3). 手柄部的安装

如图所示，首先将橡胶垫片和紧固螺母旋下，然后把手柄部插入安装孔中，再将橡胶垫片与紧固螺母拧紧，最后与水嘴主体部的耐压软管连接。

# 生产厂家与销售商

执行标准：GB 18145-2014、GB 28378-2019

产品型号：见包装箱上的标签

产品名称：见包装箱上的标签

生产日期：见包装箱上的标签

组装工厂：东陶（大连）有限公司

电 话：（0411）87624383

厂 址：大连经济技术开发区东北二街17号

东陶（中国）有限公司

全国售后服务电话：800-820-9787（固定电话）

400-820-9787（手机用户）

销售商：东陶（中国）有限公司

地 址：北京市朝阳区光华路1号 北京嘉里中心北楼1915室

网 址：www.toto.com.cn

# Contents

## Contents

Contents..... 1

Detailed list.....2

Use condition and attentions in  
construction .....3

Attentions in construction and  
maintenance ..... 4

Installation completion figure ..... 5-7

Water nozzle installation ..... 8-10

Manufacturer and vendor..... 11

## Detailed list

### Detailed list

|                                      |          |
|--------------------------------------|----------|
| Main body part of water nozzle ..... | 1 set    |
| Handle part .....                    | 1 set    |
| Shower .....                         | 1 set    |
| Shower pedestal .....                | 1 set    |
| Pressure-resistant hose .....        | 5 pieces |

(In case of decorative plate:DB357CR--4 pieces)

|                                     |        |
|-------------------------------------|--------|
| Instructions for construction ..... | 1 copy |
| Instructions for operation .....    | 1 copy |

The products using this detailed list include:

|         |   |
|---------|---|
| DB356CR | Copper alloy desk type single-handle double-control bath tub water faucet<br>(Convertible·having a handheld shower) |
| DB357CR | Copper alloy desk type single-handle double-control bath tub water faucet<br>(Convertible·having a handheld shower) |

## Use condition and attentions in construction

### Use condition

1. Cold water supply\*hot water supply pressure  
Minimum pressure ..... 0.05MPa (flow pressure)  
Maximum pressure ..... 1.0MPa (static pressure)
2. The temperature for water supply is 4~90°C. It is suggested to use the hot water temperature of 60±5°C. Do not use steam to supply hot water.
3. The ambient temperature for use is above 0°C. If not, the water tap may deform and crack due to freezing.
4. To prevent internal sprinkler damage,the water outlet temperature on the sprinkler side shall not exceed 60°C.It is suggested to use a temperature below 45°C.
5. Being out of use for a long time may result in internal and external rust to the water nozzle and being unable to be used.
6. If you want to scrap this product, do not treat it as you do for general domestic garbage. Please follow relevant statutes to have it treated, recovered and collected appropriately by an independent recovery system.
7. The product in these instructions has a cleaning function.

### Attentions in construction



**Warning:**it means that ignoring this mark and misoperation may cause serious personal injury and death.



**Attention:** it means that ignoring this mark and misoperation may cause personal injury or property loss.

### Warning

- 1.The hot water supply side of the water nozzle is in a condition of high temperature. Do not allow skin to contact with the hardware surface directly. Otherwise,scalding may occur.
- 2.Do not reverse cold\*hot water pipes. Otherwise, scalding may occur.
- 3.Do not use steam to supply hot water. Otherwise, scalding may occur.
4. The pressure resistant hose has been assembled before leaving the factory. Please do not screw the hexagon nut during installation and use, otherwise it may cause leakage and other defects.
- 5.If a customer fails to use the self-contained water inlet filter net of our water faucet,there is such a risk as water leakage or damage due to foreign matters entering into the spool.

# Attentions in construction and maintenance

## ⚠ Attentions

1. As the ceramic spool is a precise component, do not dismantle it without authorization. Otherwise, such poor conditions as water leakage, etc may be caused.
2. Do not impact the product. Otherwise, failure, water leakage may occur.
3. In case of high pressure, large flow, the switching operating force may increase. At this point, please operate by way of reducing the flow through the adjusting handle.
4. With the product design being updated constantly, the physical object may not coincide with the figure. However, the basic principle for installation, use is the same.
5. When using in places where icing may occur, anti-freezing measures must be taken. The parts will be damaged due to icing, which may cause water leakage and property loss. Damages caused by icing are repaired for a fee even during the warranty period. Please ensure that the ambient temperature of the product is always above 0°C.

## Anti-freezing measures

When using in places where icing may occur, anti-freezing measures must be taken.

1. The parts will be damaged due to icing, which may cause water leakage.
2. Damaged parts caused by icing are repaired for a fee even during the warranty period.
3. After the construction is completed or when it is not used for a long time, prepare to prevent sudden drop of temperature and prevent the product from icing.
4. Because of the risk of icing, please ensure that the ambient temperature of the product is always above 0°C.

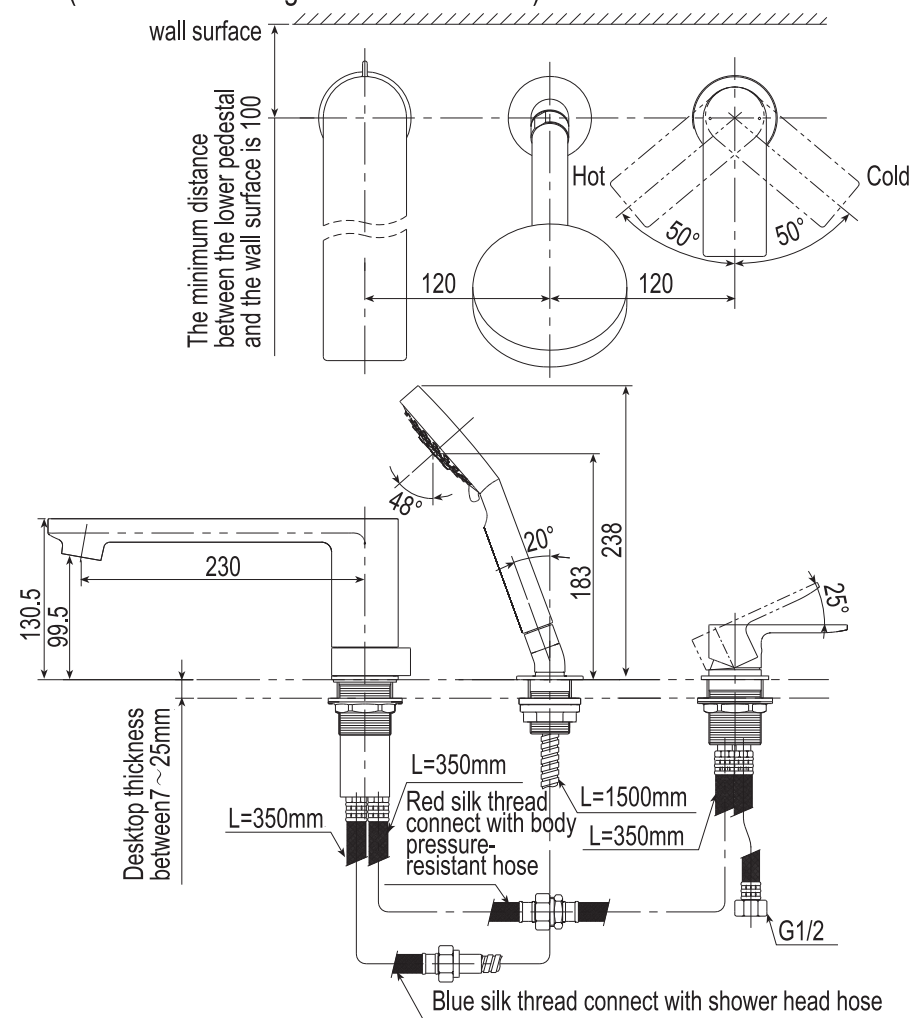
## Maintenance

To maintain a beautiful appearance of the product, the user is requested to conduct maintenance and care in the following method.

1. Wipe with a piece of soft cloth frequently and use a piece of soft cloth dipped in water to wipe from time to time.
2. When dirt exists obviously, please use water to wash sufficiently after wiping with a neutral detergent.

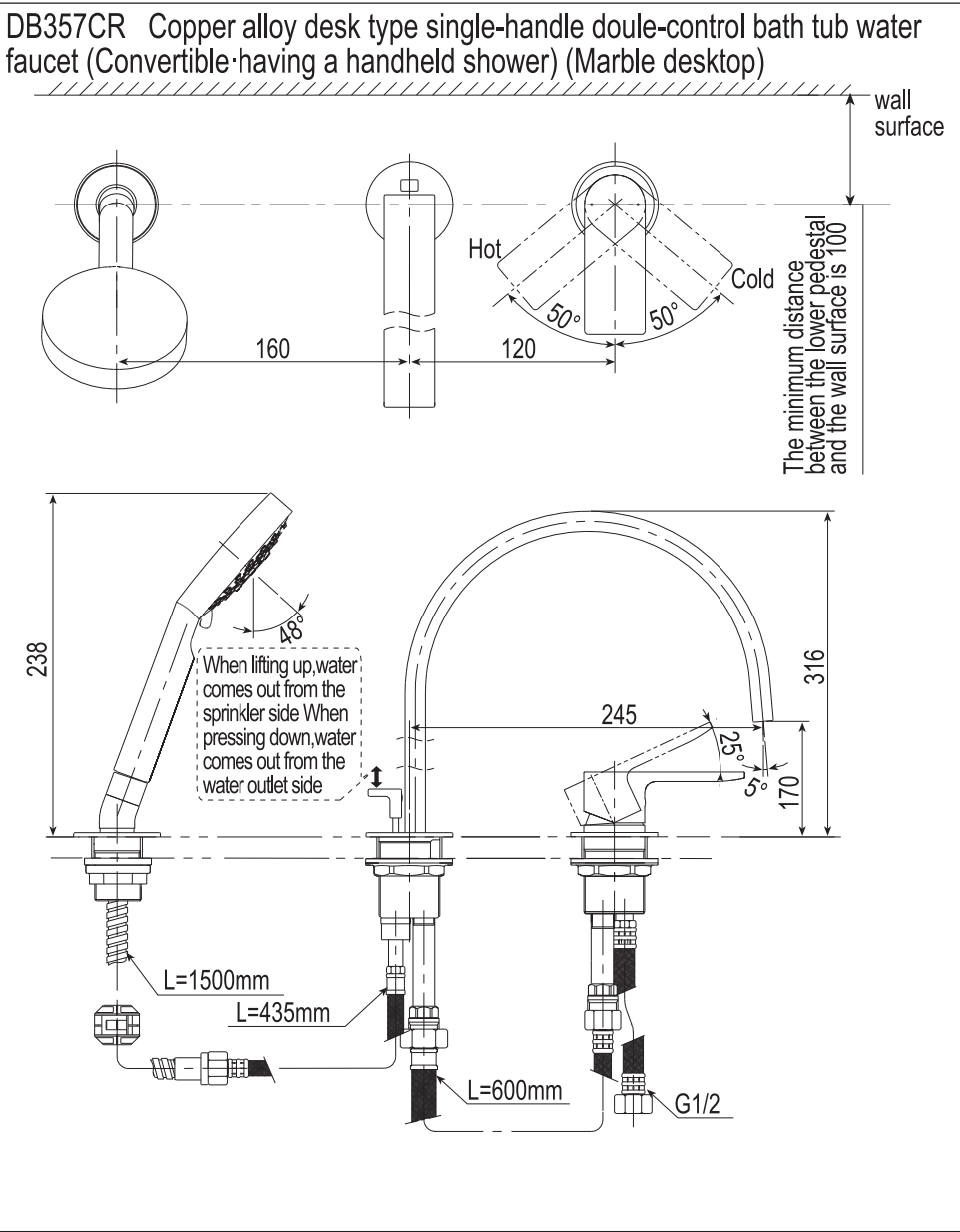
# Installation completion figure

DB356CR Copper alloy desk type single-handle double-control bath tub water faucet (Convertible·having a handheld shower)

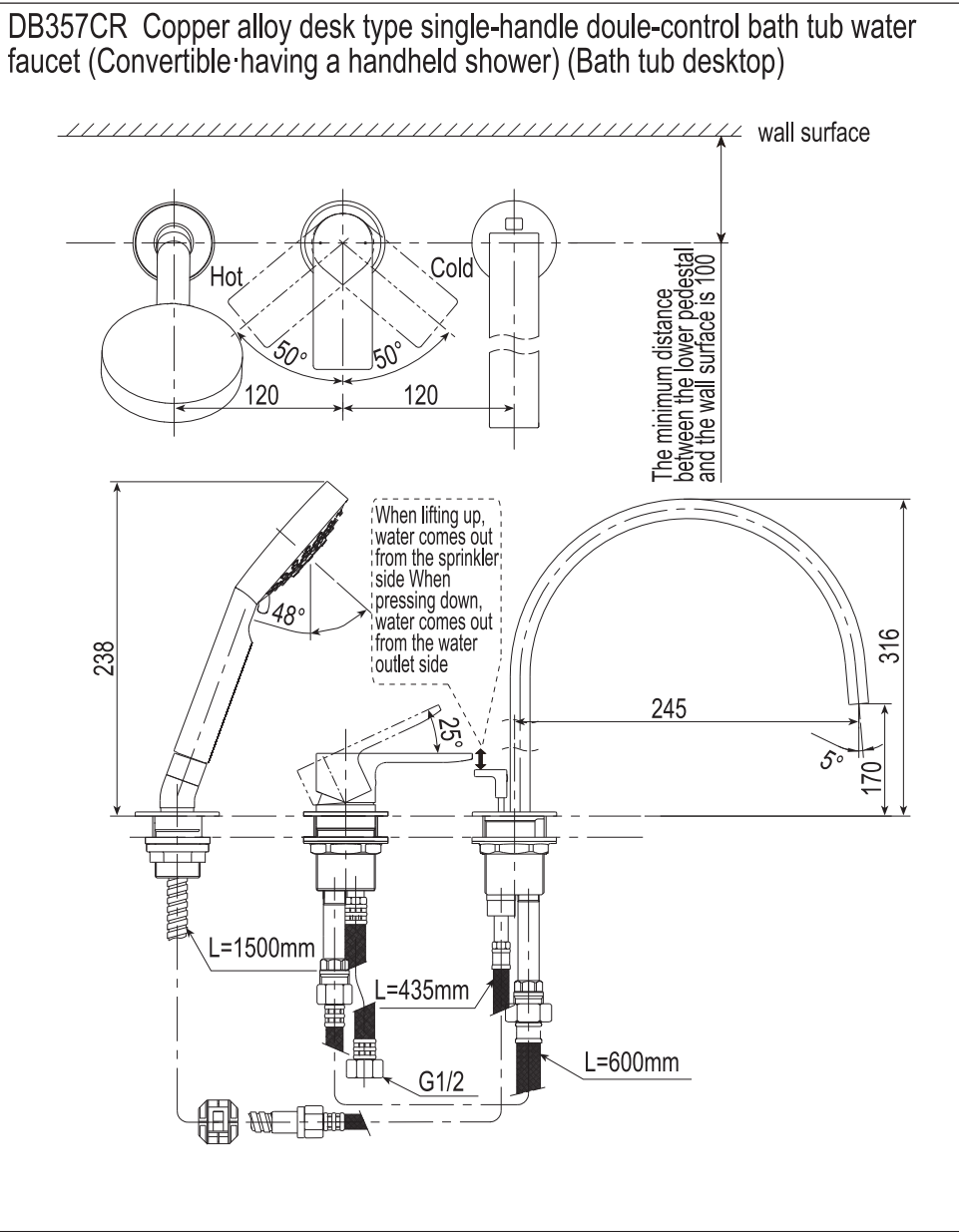


※Please don't connect pressure hose wrong

# Installation completion figure



# Installation completion figure



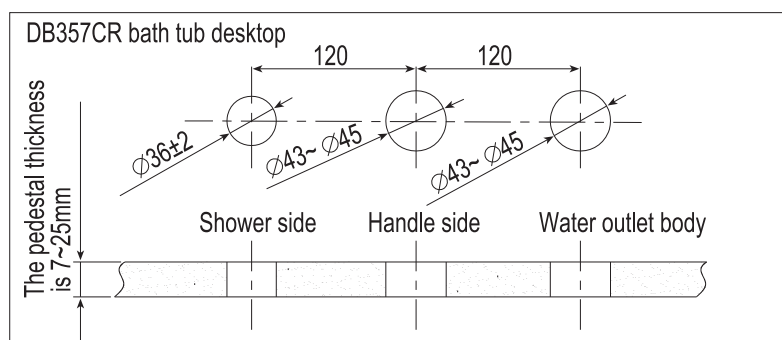
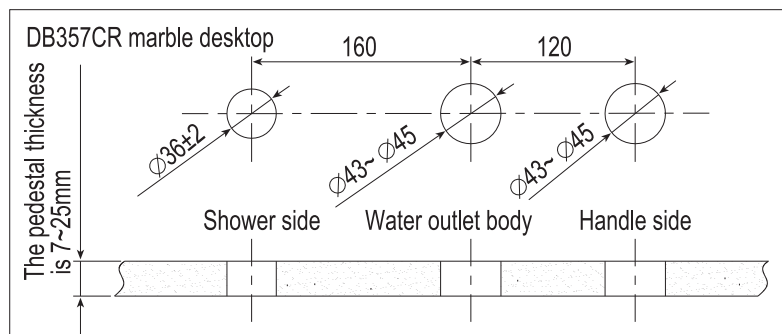
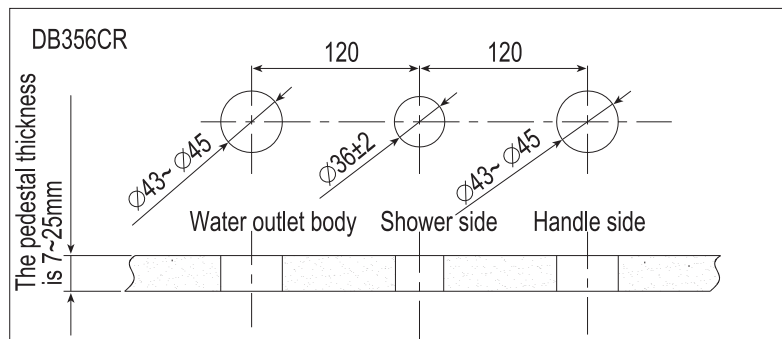


# Water nozzle installation

## 1.Cleaning in the water supply pipe

Before installation,be sure to remove by washing such foreign matters as dust, sand,etc.inthe water supply pipe.

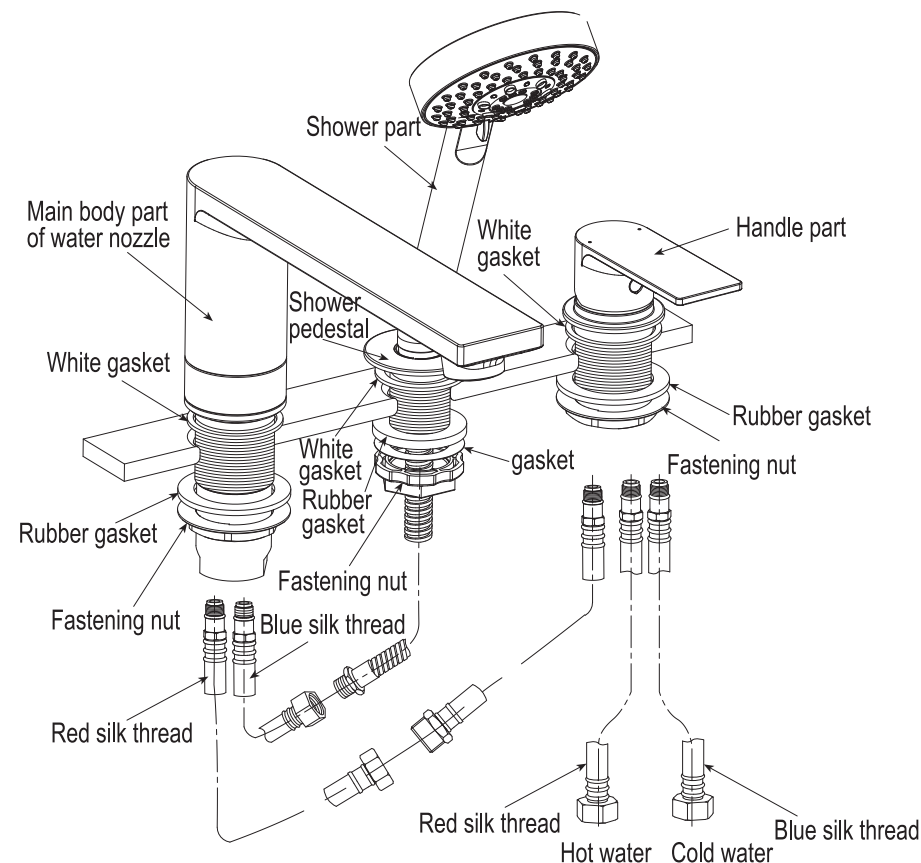
## 2.Hole setting



# Water nozzle installation

## 3.Main body installation(take DB356CR as an example)

Before installation,it is imperative to remove the dirt around the mounting hole. Refer to the figure below for the main body installation.Here is the specific installation method:



### (1)Installation of main water nozzle part

First unscrew the rubber gasket and fastening nut.Then insert the main water nozzle part in the mounting hole.The screw tight the rubber gasket and fastening nut at the positions as shown in the figure.Then screw in a pressure-resistant hose sa shown in the figure.

# Water nozzle installation

---

## (2) Shower part installation

1)As shown in the figure,insert the shower pedestal in the mounting hole and screw tight the fixing nut.

2)As shown in the figure,run the shower hose screw thread end through the shower pedestal and tighten sufficiently with the pressure-resistant hose of the main water nozzle body part.

## 3)Handle installation

As shown in the figure,first unscrew the rubber gasket and fastening nut.Then insert the handle in the mounting hole.Next,screw tight the rubber gasket and fastening nut. Finally,connect with the pressure-resistant hose of the main water nozzle body part.

# Manufacturer and vendor

---

Applicable standard:GB 18145-2014、 GB 28378-2019

Product Model No.:See the label on the packaging case

Product name:See the label on the packaging case

Production date:See the label on the packaging case

Assembly factory:TOTO(Dalian)Co.,Ltd.

Telephone:(0411)87624383

Factory address:17 Dong Bei Second Street,Economic&Technical Development zone,Dalian

TOTO(China)Co.,Ltd.

After-sale service toll free telephone all over the country:

800-820-9787(fixed telephone)

400-820-9787(for mobile phone users)

Vendor:TOTO(China)Co.,Ltd.

Address:Room 1915,North Building of Beijing Jiali Center,

No.1,Guanghua Road,Chaoyang District,Beijing

Website:www.toto.com.cn