

# TOTO

## 施工说明书 Instructions for construction

安装产品前请仔细阅读本施工说明书，并保留备用。  
Before product installation, read these instructions for construction carefully and retain it for future reference.

# TOTO

OG4101Y(D)  
2021.10

# 目录

目 录	
目 录	1
明细单	2-3
使用条件与施工上的注意	4
施工上的注意与保养	5
安装完成图	6-9
水嘴的安装	10-15
生产厂家与销售商	16

# 明细单

明 细 单	
手柄部	1套
装饰板	1个
衬 板	1个
螺 钉	4个
施工说明书	1本
使用说明书	1本
使用此明细的产品包括：	
TBV01101* 铜合金壁式单柄暗装单向转换面板(开闭切换)	
TBV02101* 铜合金壁式单柄暗装单向转换面板(开闭切换)	
TBV01103* 铜合金壁式单柄暗装双向转换面板(两种出水切换)	
TBV02103* 铜合金壁式单柄暗装双向转换面板(两种出水切换)	
TBV01102* 铜合金壁式单柄暗装三向转换面板 (三种出水切换・开闭切换)	
TBV02102* 铜合金壁式单柄暗装三向转换面板 (三种出水切换・开闭切换)	
TBV01104* 铜合金壁式单柄暗装三向转换面板(三种出水切换)	
TBV02104* 铜合金壁式单柄暗装三向转换面板(三种出水切换)	

# 明细单

## 明 细 单

主体部 ..... 1套

防水布 ..... 1个

施工说明书..... 1本

使用说明书..... 1本

使用此明细的产品包括：

TBN01104\* 铜合金壁式单柄暗装单向转换阀体  
(开闭切换)

TBN01102\* 铜合金壁式单柄暗装双向转换阀体  
(两种出水切换)

TBN01101\* 铜合金壁式单柄暗装三向转换阀体  
(三种出水切换・开闭切换)

TBN01103\* 铜合金壁式单柄暗装三向转换阀体  
(三种出水切换)

# 使用条件与施工上的注意

## 使 用 条 件

1. 供冷水\*供热水压强：  
最低压强.....0.05MPa（流动压）  
最高压强.....1.0MPa（静压）  
推荐使用压强.....0.1-0.5MPa（流动压）  
测试压强.....1.6MPa（静压）
2. 供水温度在4℃~90℃，建议使用热水温度60℃，供热水请勿使用蒸汽。
3. 使用环境温度0℃以上。如果低于0℃，水嘴会出现变形、冻裂等现象。
4. 为了防止花洒内部损坏，花洒侧吐水温度不得超过60℃，建议使用温度45℃以下。
5. 长时间不使用时，可能导致水嘴内部及外部锈蚀不能使用等现象。
6. 如果您需要废弃本产品，请勿将其作为一般生活垃圾处理，请依照法规经由独立的回收体系进行合适处理、恢复和回收。
7. 本说明书中的产品具有清洗功能。

※为了达到最好的安装与使用效果，水嘴本体推荐与「TOTO」其他系列产品配套使用。

## 施 工 上 的 注 意

- ⚠ **警告** 表示如果无视此标志而误操作时，有可能造成人员重伤或死亡。  
⚠ **注意** 表示如果无视此标志而误操作时，有可能造成人身伤害或财产损失。

### ⚠ 警告

1. 水嘴的供热水一侧处于高温状态，请勿使皮肤直接接触五金配件表面，否则可能会烫伤。
2. 请勿配反冷\*热水配管，否则可能会烫伤。
3. 供热水请勿使用蒸汽，否则可能会烫伤。
4. 当直接从吐水口侧切换到淋浴器侧或从淋浴器侧切换到吐水口侧时，水温会发生变化，要用手测试水温后再使用，否则可能会烫伤。

# 施工上的注意与保养

## ⚠ 注意

1. 由于陶瓷阀芯是较精密的部件，请勿擅自分解，否则可能会造成漏水等不良。
2. 请勿撞击本产品，否则可能会造成故障、漏水。
3. 由于出厂前进行通水检查，故水嘴内可能有残留水，并非产品有问题。
4. 随着产品式样的不断更新,实物存在与图示不符的情况,但基本安装、使用原理相同。
5. 在可能结冰的场所使用时，要切实做好防冻措施。

因结冰，零件破损，有可能导致漏水，造成财产损失。因结冰而造成的破损即使在保修期内也是有偿修理。请不要让产品的环境温度低于0℃。

## 防冻措施

在可能结冰的场所使用时，要切实做好防冻措施。

1. 产品结冰的话零件损坏，成为漏水的原因。
2. 因结冰造成的零件破损即使在保修期也是有偿修理。
3. 施工完了后或长时间不使用时，要有预防突然降温的准备，要对产品进行结冰预防。
4. 因为有结冰的危险，请不要让产品周围的温度在0℃以下。

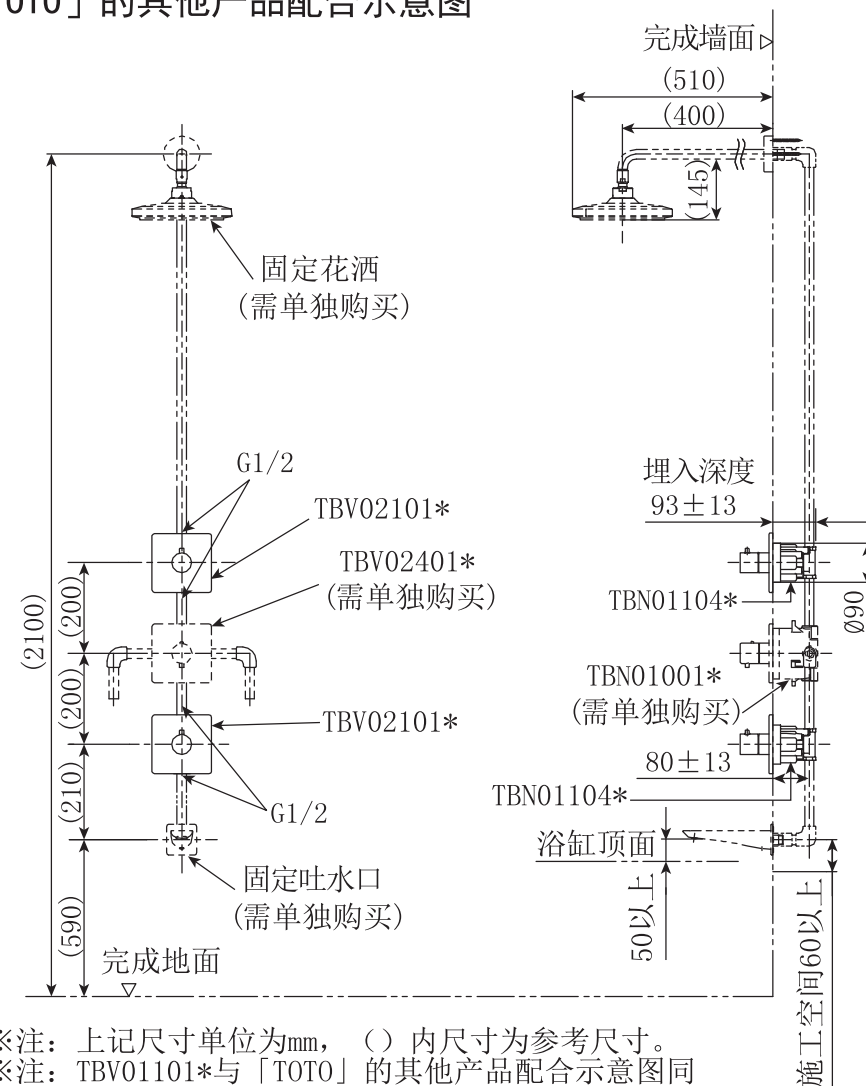
## 保养

为长期保持产品的美观，请用户按以下方法维护保养。

1. 经常用软布擦拭，间或用软布蘸水擦拭。
2. 当有污垢且比较明显时，请用中性洗涤剂擦拭后充分进行水洗。

# 安装完成图

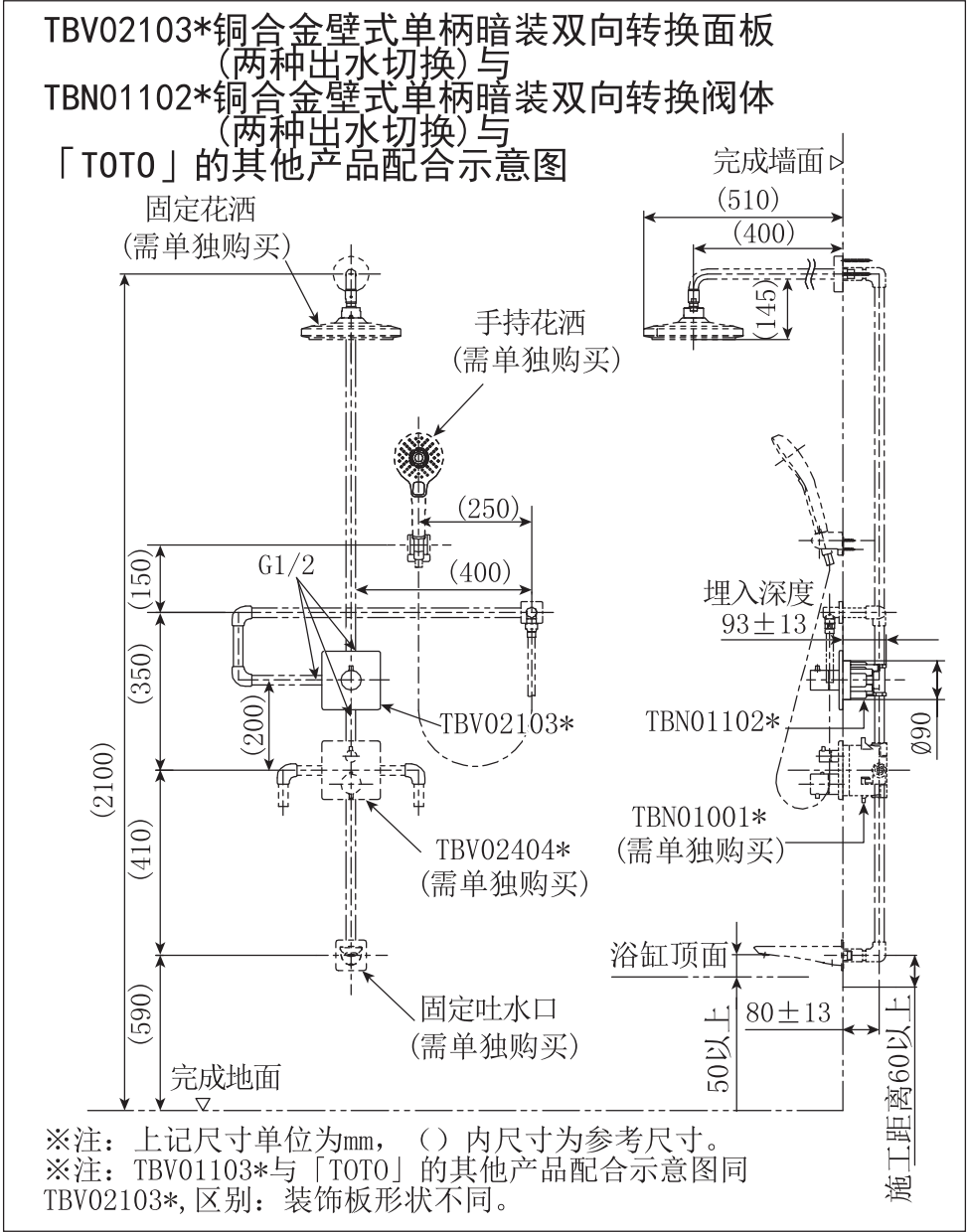
TBV02101\*铜合金壁式单柄暗装单向转换面板(开闭切换)与  
TBN01104\*铜合金壁式单柄暗装单向转换阀体(开闭切换)与  
「TOTO」的其他产品配合示意图



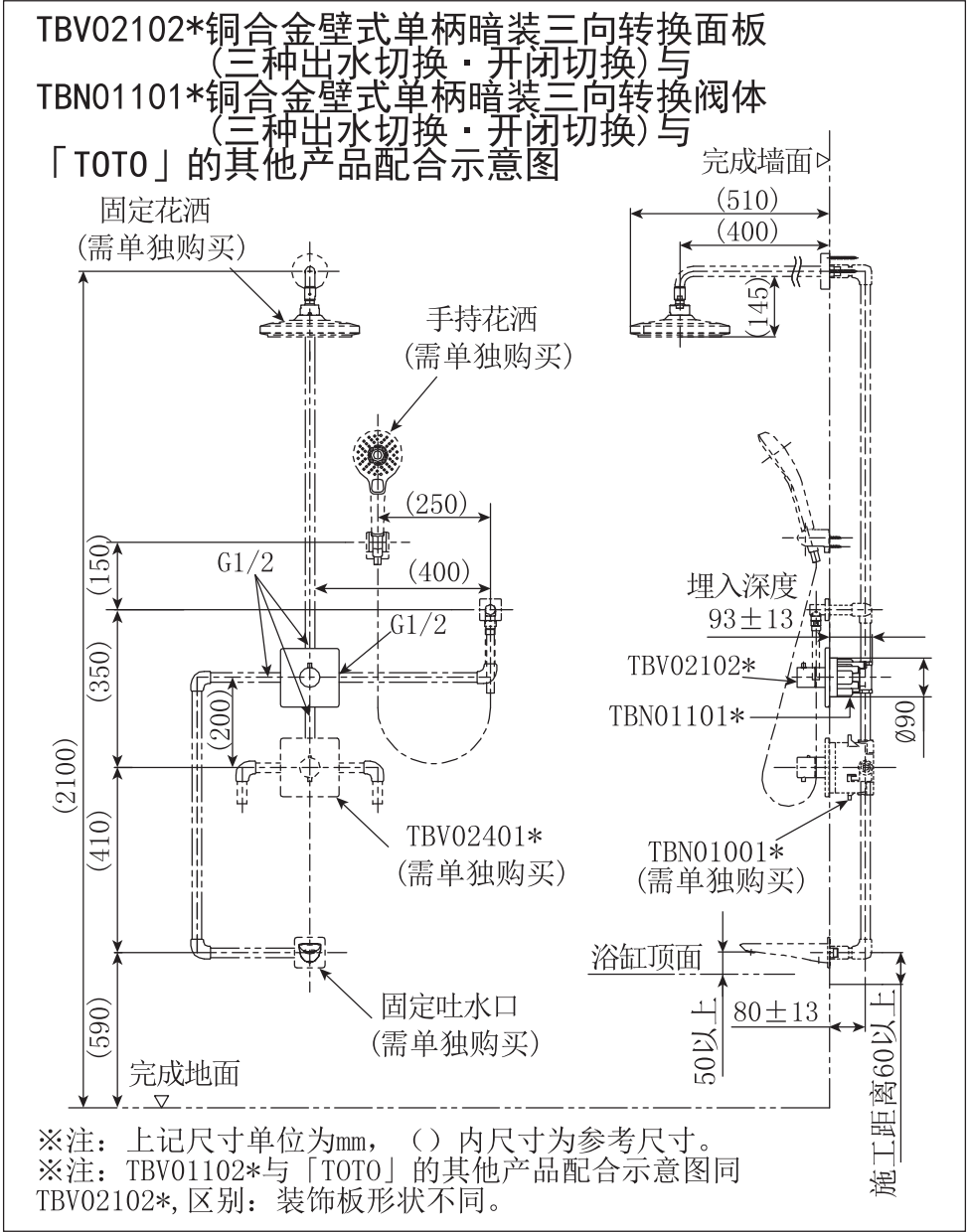
※注：上記尺寸单位为mm，（）内尺寸为参考尺寸。  
※注：TBV01101\*与「TOTO」的其他产品配合示意图同TBV02101\*，区别：装饰板形状不同。



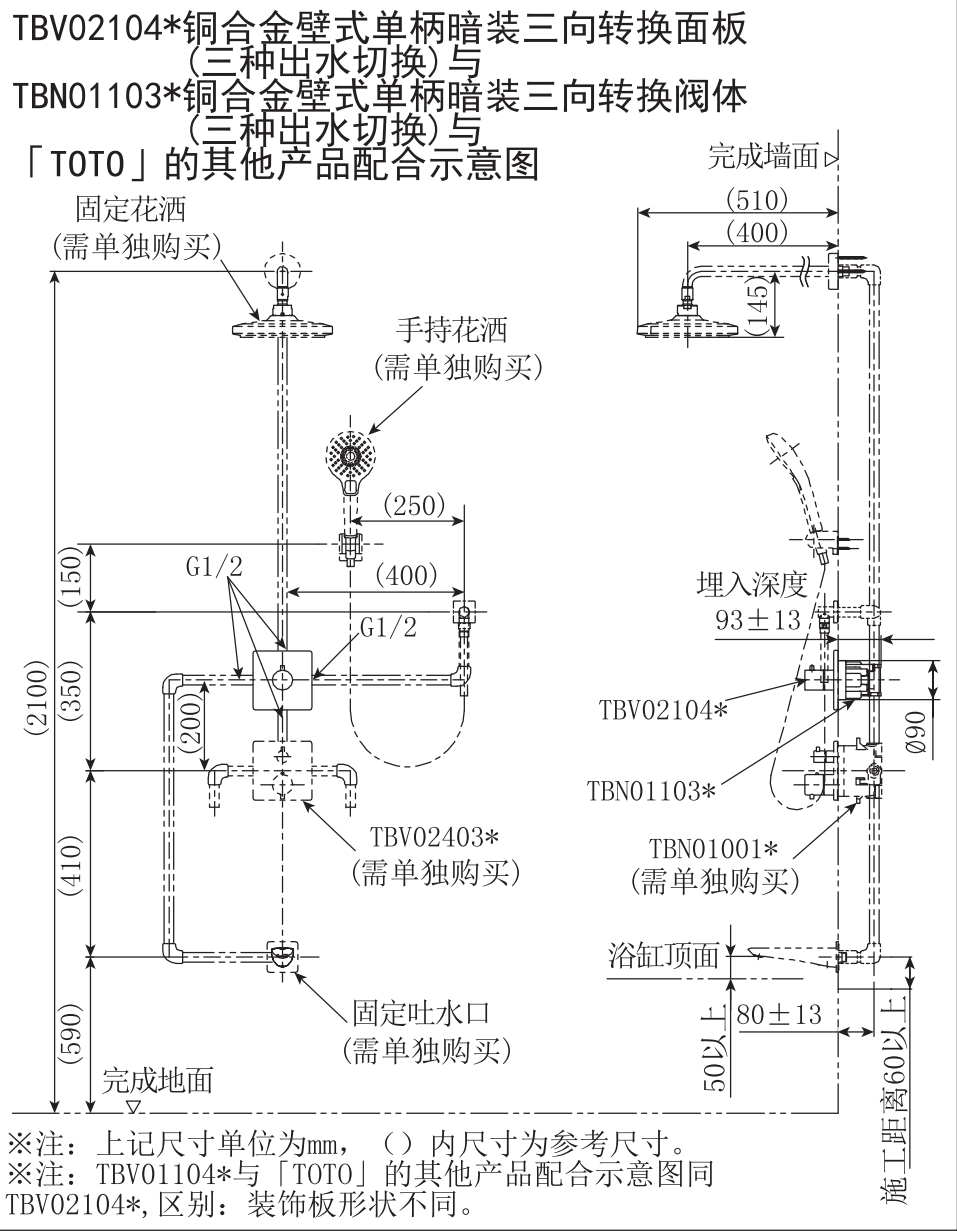
# 安装完成图



# 安装完成图

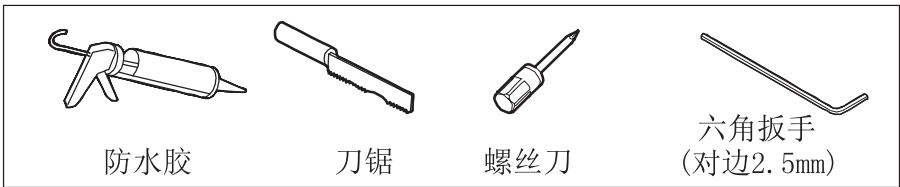


# 安装完成图



# 水嘴的安装

## 安装前的准备 工具

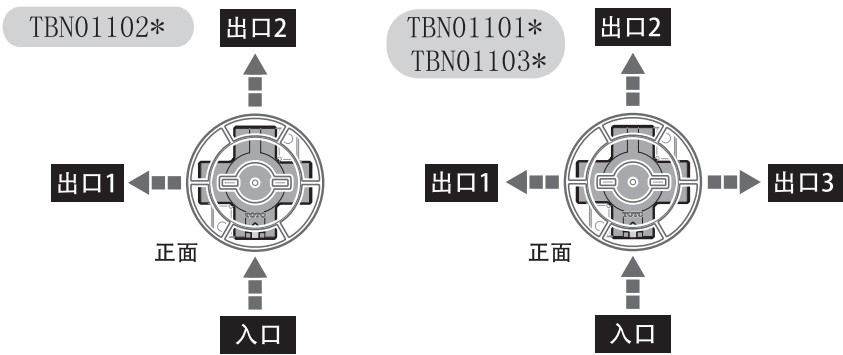


## 安装前确认

- 确认供水管已经关闭，确认安装前水路进行清洗了。
- 仔细阅读施工说明书并按照说明书的安装要领来进行安装。

## 一、水嘴安装前的准备

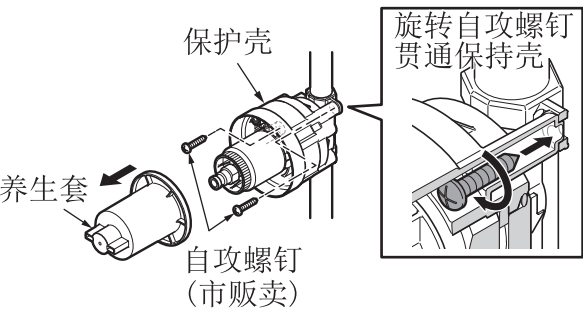
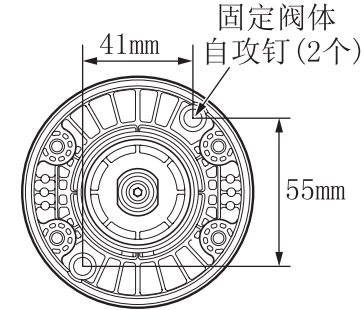
1. 首先进行冷热水供水管路的清洗及耐压检查。
2. 按下图指示连接进水管方向。



# 水嘴的安装

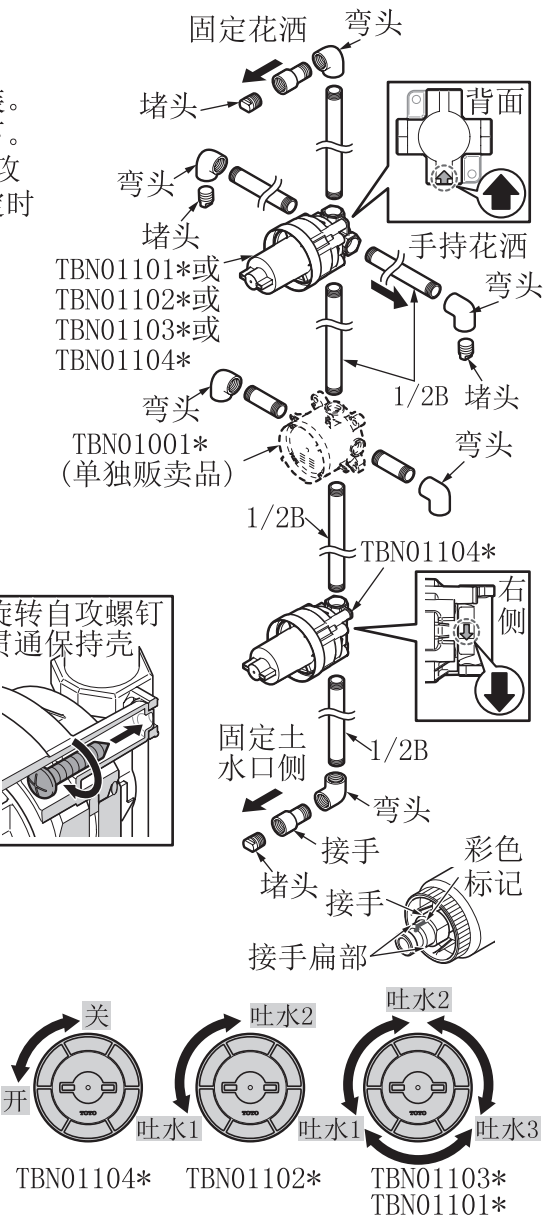
## 二、主体部的安装

- 1. 按下图位置布局主体部的安装。
- 2. 主体部安装前先将养生套取下。
- 3. 按图示尺寸，使用 $\phi 5$ 以下自攻钉将主体部固定到墙上，固定时主体部与墙面保持垂直。



- 4. 主体部安装完了（接手的彩色标记向上），再将养生套安装到主体部上，安装时养生套扁部与接手扁部对齐进行安装。

- 5. 安装完毕后，打开配管部的总阀，旋转养生套，确认出水方向，如图所示。

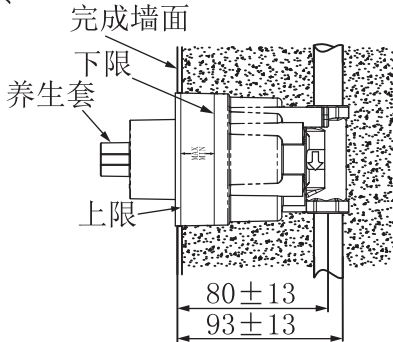


# 水嘴的安装

- 6. 将养生套安到主体部，再用水泥填充主体部。

**注意**

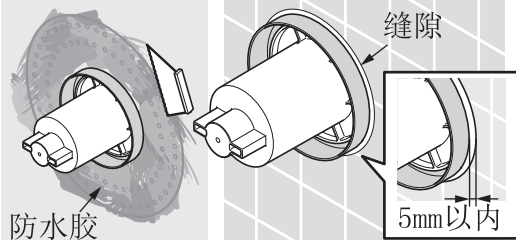
- 安装主体部时，请不要将养生套取下。
- 安装时，请注意主体部的埋入深度，请保证完成墙面在养生套上MIN-MAX标记之间，完成墙面开孔尺寸： $\phi 90 \sim \phi 95$ 。
- 进水管与主体部连接并确认各连接处不漏水再加水泥填料。



- 7. 在主体部与墙面之间缝隙处，涂防水胶。
- 8. 在墙面上涂防水胶，用刮板将防水胶刮平整，再将防水布粘贴到墙面上（防水布要压实，并紧贴墙面）。
- 9. 在防水布上再涂上一层防水胶，用刮板刮平整。等待防水胶干好后进行完成墙面施工。

**注意**

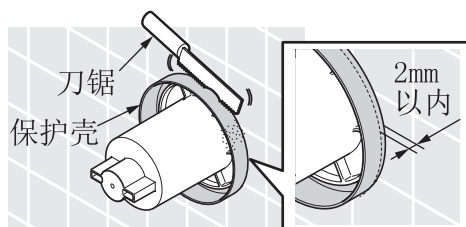
- 请保证完成墙和主体部的缝隙在5mm以内。



# 水嘴的安装

## 三、面板部安装前的准备

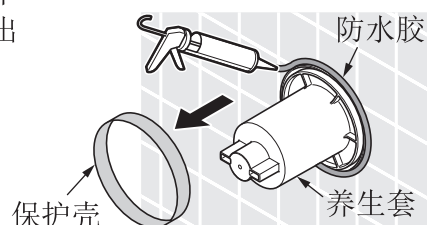
1. 使用刀锯将保护壳凸出墙面的部分进行切除，需要保证保护壳凸起边缘与墙面在2mm以内。



### 注意

- 主体部保护壳切割时要注意切边整齐。（边缘也不能凹陷于墙面以内）
- 切割保护壳时，不要切割养生套。

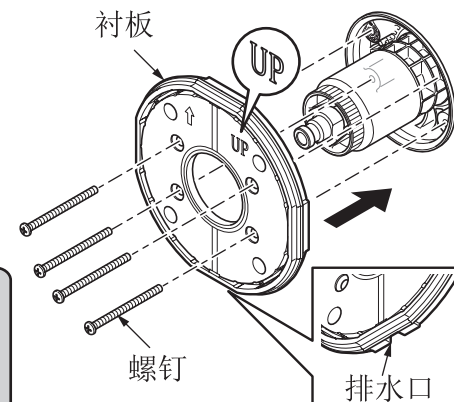
2. 在主体部保护壳与墙面的缝隙中均匀涂上防水胶，胶面不能凸出墙面。
3. 最后将养生套取下并废弃。



# 水嘴的安装

## 四、面板部的安装

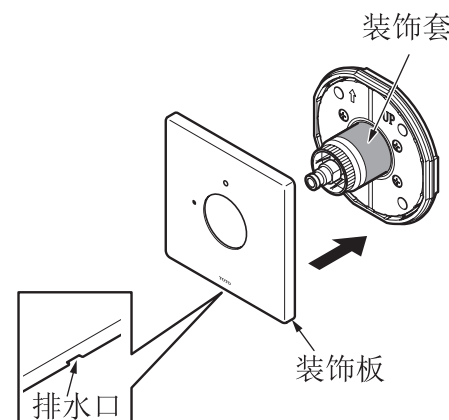
1. 按照衬板上“UP”指示向上状态，套入主体部上。
2. 用螺丝刀将螺钉紧固于衬板上。



### 注意

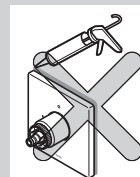
- 衬板方向不能上下颠倒安装，因排水口在下面。
- 衬板上不要使用密封胶，因为衬板上有发泡密封胶条及下方有排水口。
- 螺钉紧固时必须压实衬板，衬板与墙面不得有缝隙。
- 螺钉需要手动旋转，不可使用电动扳手紧。

3. 将装饰板的排水口朝下，穿过装饰套套在衬板上。
4. 装饰板与墙面缝隙保持在1mm以内。



### 注意

- 装饰板安装时，注意不要划伤装饰套。
- 装饰板周围不可涂防水胶，因为装饰板下有排水。

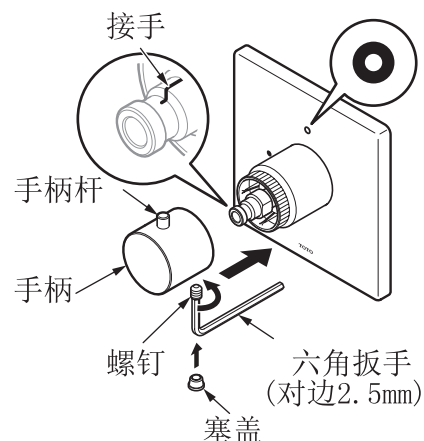


## 水嘴的安装

5. 将手柄部取出，把塞盖从手柄上拆下，将手柄杆向上插入接手后，再用六角扳手(对边2.5mm)紧固螺钉固定手柄，然后再将塞盖按到手柄上。

### 注意

● 手柄杆要与装饰板标识“○”位置对齐(TBV02101\*场合)。  
TBV02102\*、TBV02103\*、TBV02104场合与标识“2”位置对齐。



## 生产厂家与销售商

执行标准: GB 18145-2014

产品型号: 见包装箱上的标签

产品名称: 见包装箱上的标签

生产日期: 见包装箱上的标签

组装工厂: 东陶(大连)有限公司

电 话: (0411) 87624386

厂 址: 大连经济技术开发区东北二街17号

东陶(中国)有限公司

全国售后服务电话: 800-820-9787(固定电话)

400-820-9787(手机用户)

销售商: 东陶(中国)有限公司

地 址: 北京市朝阳区光华路1号 北京嘉里中心北楼1915室

网 址: [www.toto.com.cn](http://www.toto.com.cn)

# Contents

Contents	
Contents .....	1
Detailed list .....	2-3
Use condition and attentions in construction .....	4
Attentions in construction and maintenance .....	5
Installation completion figure.....	6-9
Faucets installation.....	10-15

# Detailed list

Detailed list	
Handle part .....	1 set
Decorating plate .....	1 piece
Lining plate .....	1 piece
Screw .....	4 pieces
Instructions for construction .....	1 copy
Instructions for operation .....	1 copy
The products using this detailed list include:	
TBV01101* "G Shower" Volume Control Trim (Standard Type)	
TBV02101* "G Shower" Volumu Control Trim (ContemporaryType)	
TBV01103* "G Shower" 2way Diverter Trim (Standard Type)	
TBV02103* "G Shower" 2way Diverter Trim (ContemporaryType)	
TBV01102* "G Shower" 3way Diverter Trim with Shut Off(Standard Type)	
TBV02102* "G Shower" 3way Diverter Trim with Shut Off(Contemporary Type)	
TBV01104* "G Shower" 3way Diverter Trim (Standard Type)	
TBV02104* "G Shower" 3way Diverter Trim (Contemporary Type)	



## Detailed list

### Detailed list

Main body part .....	1 set
Waterproof cloth .....	1 piece
Instructions for construction.....	1 copy
Instructions for operation .....	1 copy

The products using this detailed list include:

TBN01104\* Volume Control Valve

TBN01102\* 2way Diverter Valve

TBN01101\* 3way Diverter Valve and Shut Off

TBN01103\* 3way Diverter Valve

## Use condition and attentions in contruction

### Use condition

1. Cold water supply\*hot water supply pressure  
Minimum pressure ..... 0.05MPa (flow pressure)  
Maximum pressure ..... 1.0MPa (static pressure)  
Recommended service pressure.....0.1-0.5MPa (flow pressure)  
It is required to provide a pressure-reducing valve when exceeding 0.5MPa.  
Testing pressure.....1.6MPa (static pressure)
2. The temperature for water supply is 4~90°C. It is suggested to use the temperature of 60°C. Do not use steam to supply hot water.
3. The ambient temperature for use is above 0°C. If the ambient temperature is lower than 0°C, the faucets will deform and crack from freezing.
4. To prevent internal sprinkler damage, the water outlet temperature on the sprinkler side shall not exceed 60°C. It is suggested to use a temperature below 45°C.
5. Being out of use for a long time may result in internal and external rust to the faucets and being unable to be used.
6. If you want to scrap this product, do not treat it as you do for general household garbage. Please follow relevant statutes to have it treated, recovered and collected appropriately by an independent recovery system.
7. The product in these instructions has a cleaning function.

※ To attain the best installation and operation effect, it is recommended that the faucet should be used with the handheld series shower from TOTO.

### Attentions in contruction



Warning: it means that ignoring this mark and misoperation may cause serious personal injury and death.



Attention: it means that ignoring this mark and misoperation may cause personal injury or property loss.



### Warning

1. The hot water supply side of the faucets is in a condition of high temperature. Do not allow skin to contact with the hardware surface directly. Otherwise, scalding may occur.
2. Do not reverse cold\*hot water pipes. Otherwise, scalding may occur.
3. Do not use steam to supply hot water. Otherwise, scalding may occur.
4. When switching directly from the water outlet side to the shower side or from the shower side to the water outlet side, the water temperature may change. Be sure to use after measuring the water temperature with hand. Otherwise, scalding may occur.

# Attentions in construction and maintenance

## ⚠ Attentions

- 1.As the ceramic cartridge is a precise component, do not dismantle it without authorization. Otherwise, such poor conditions as water leakage,etc. may be caused.
- 2.Do not impact the product. Otherwise, water leakage may occur.
- 3.As water supply inspection is made before ex-factory, there may be water left in the faucet and this is not a problem with the product.
- 4.With the product design being updated constantly, the physical object may not coincide with the figure. However, the basic principle for installation, use is the same.
- 5.When using in places where icing may occur, anti-freezing measures must be taken.The parts will be damaged due to icing, which may cause water leakage and property loss. Damages caused by icing are repaired for a fee even during the warranty period. Please ensure that the ambient temperature of the product is always above 0°C.

## Anti-freezing measures

When using in places where icing may occur, anti-freezing measures must be taken.

1. The parts will be damaged due to icing, which may cause water leakage.
2. Damaged parts caused by icing are repaired for a fee even during the warranty period.
3. After the construction is completed or when it is not used for a long time, prepare to prevent sudden drop of temperature and prevent the product from icing.
4. Because of the risk of icing, please ensure that the ambient temperature of the product is always above 0°C.

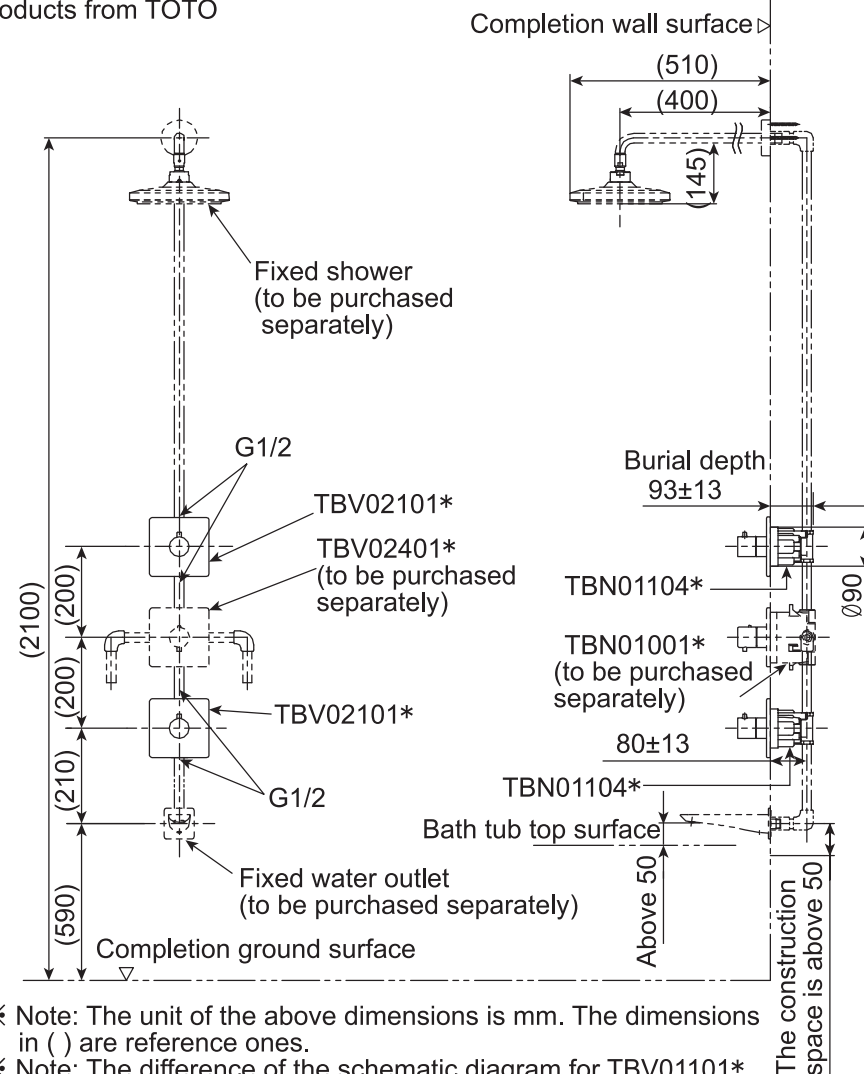
## Maintenance

To maintain a beautiful appearance of the product, the user is requested to conduct maintenance and care in the following method.

- 1.Wipe with a piece of soft cloth frequently and use a piece of soft cloth dipped in water to wipe from time to time.
- 2.When dirt exists obviously, please use water to wash sufficiently after wiping with a neutral detergent.

# Installation completion figure

Schematic diagram for TBV02101\* "G Shower" Volumu Control Trim (Contemporary Type) and TBN01104\* Volume Control Valve mating with other products from TOTO

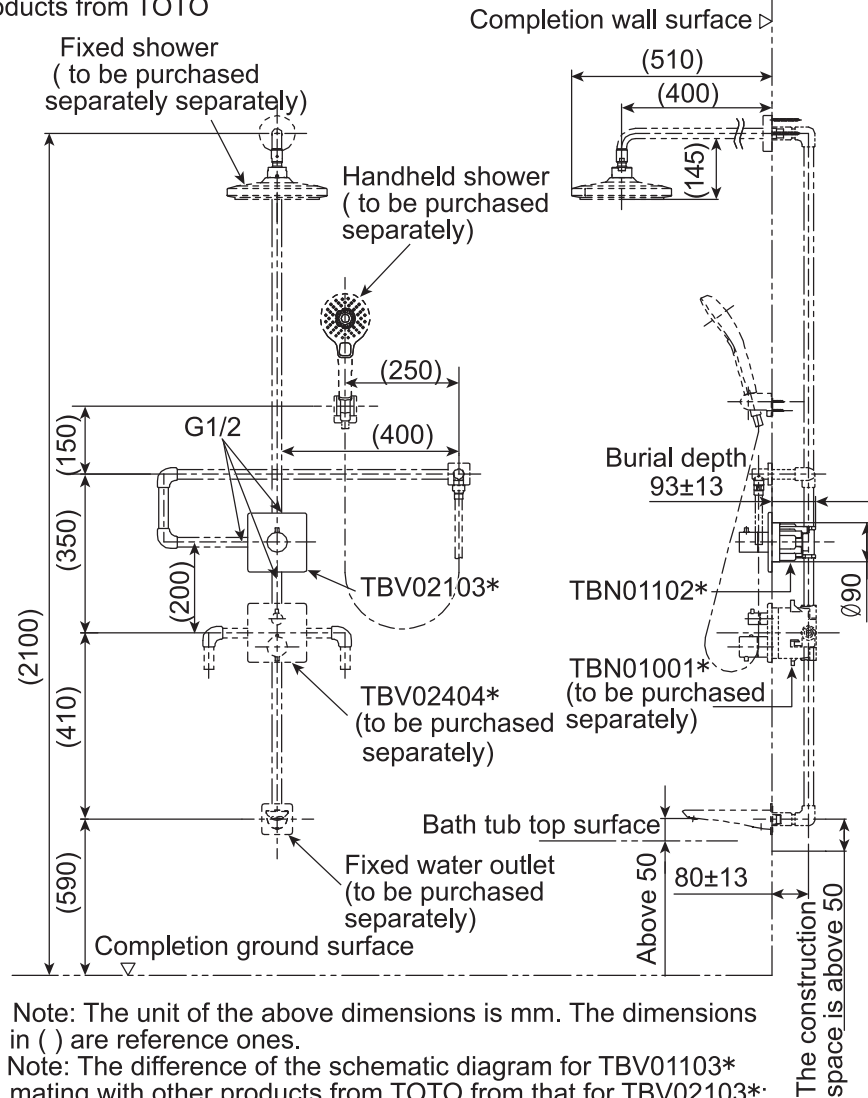


※ Note: The unit of the above dimensions is mm. The dimensions in ( ) are reference ones.

※ Note: The difference of the schematic diagram for TBV01101\* mating with other products from TOTO from that for TBV02101\*: The shape of the decorating plate is different.

# Installation completion figure

Schematic diagram for TBV02103\* "G Shower" 2way Diverter Trim (Contemporary Type) and TBN01102\* 2way Diverter Valve mating with other products from TOTO

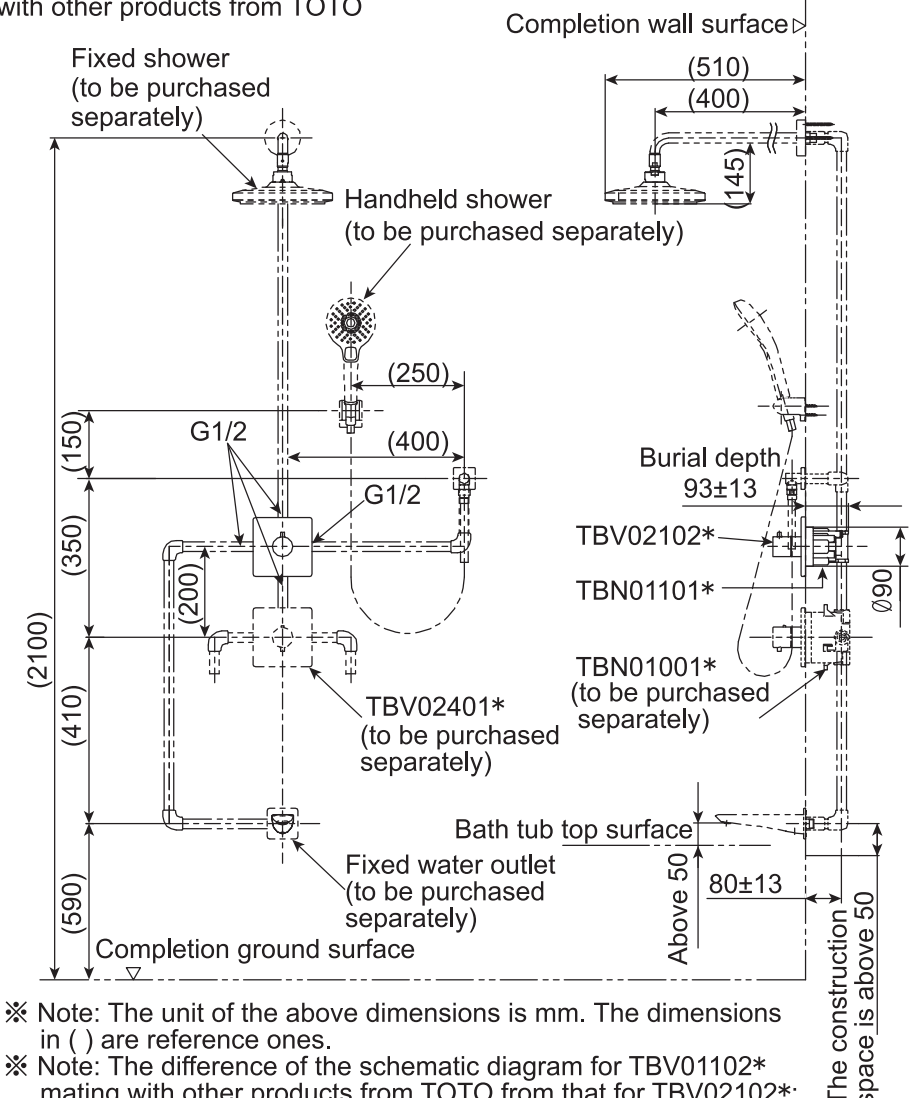


※ Note: The unit of the above dimensions is mm. The dimensions in ( ) are reference ones.

※ Note: The difference of the schematic diagram for TBV01103\* mating with other products from TOTO from that for TBV02103\*: The shape of the decorating plate is different.

# Installation completion figure

Schematic diagram for TBV02102\* "G Shower" 3way Diverter Trim with Shut Off (Contemporary Type) and TBN01101\* 3way Diverter Valve and Shut Off mating with other products from TOTO

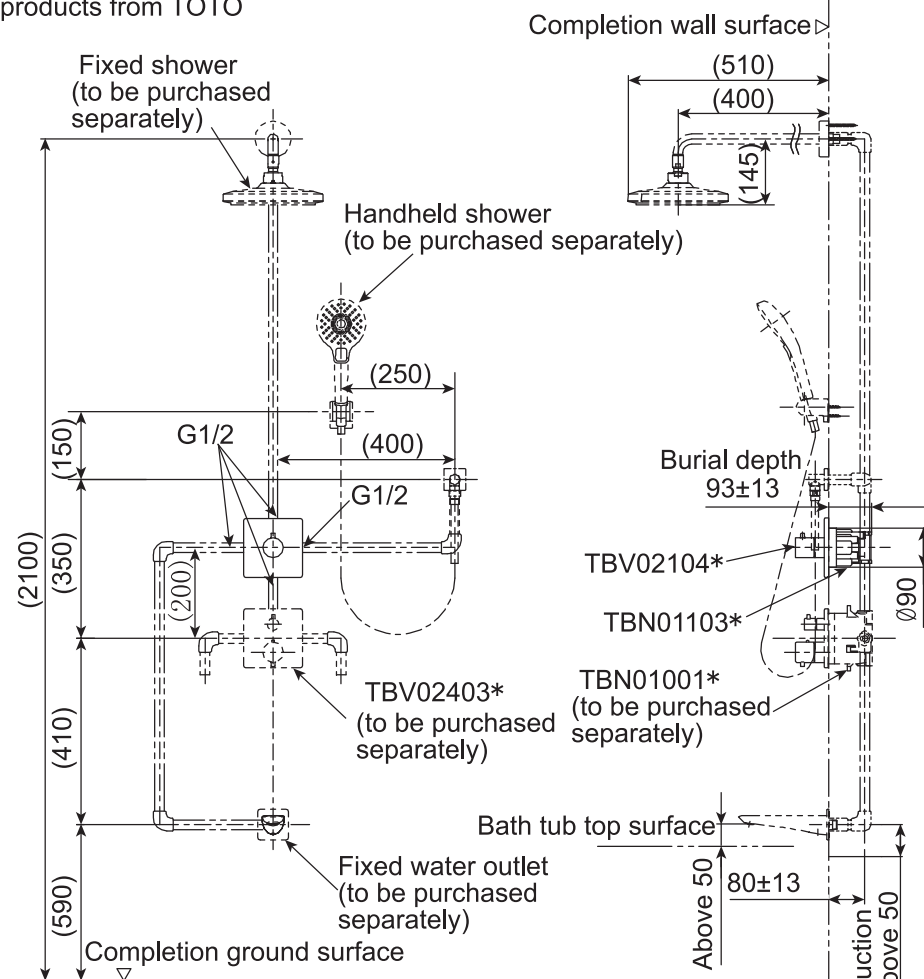


※ Note: The unit of the above dimensions is mm. The dimensions in ( ) are reference ones.

※ Note: The difference of the schematic diagram for TBV01102\* mating with other products from TOTO from that for TBV02102\*: The shape of the decorating plate is different.

# Installation completion figure

Schematic diagram for TBV02104\* "G Shower" 3way Diverter Trim (Contemporary Type) and TBN01103\* 3way Diverter Valve mating with other products from TOTO

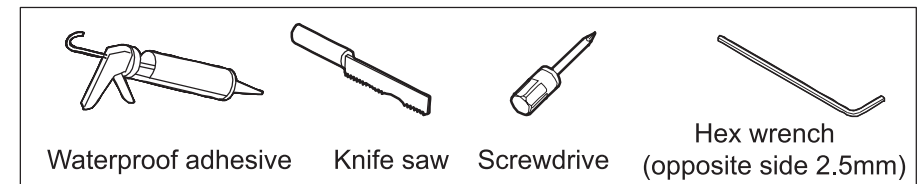


※ Note: The unit of the above dimensions is mm. The dimensions in ( ) are reference ones.

※ Note: The difference of the schematic diagram for TBV01104\* mating with other products from TOTO from that for TBV02104\*: The shape of the decorating plate is different.

# Faucet installation

Tools to be prepare before installation

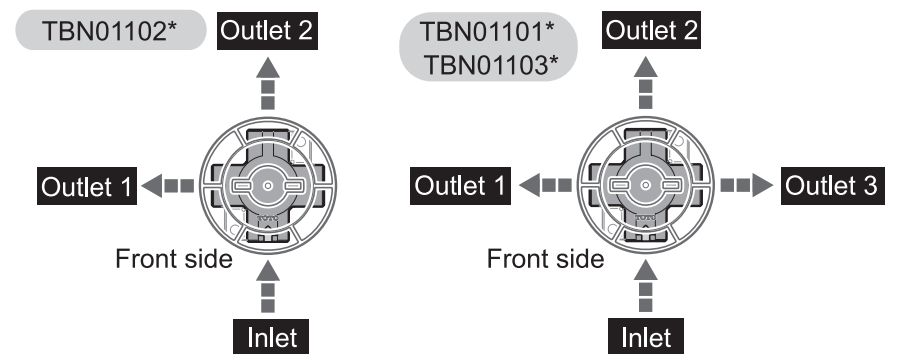


**Confirm the following before installation**

- Confirm that the water supply pipe has been closed and that the water circuit has been cleaned before installation.
- Read the instructions for construction carefully and install according to the main points for installation therein.

**I. Preparations before faucet installation**

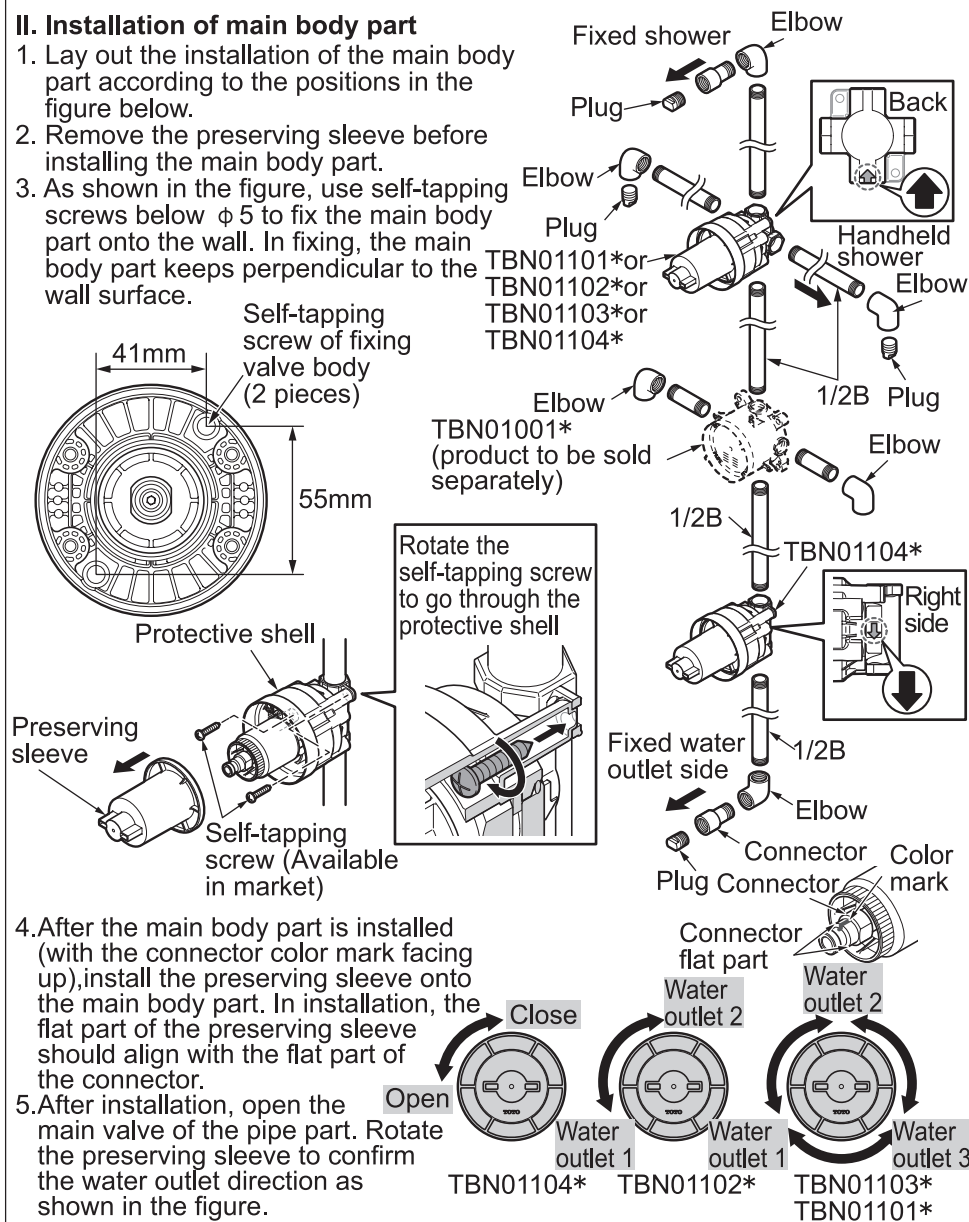
1. Firstly, conduct cleaning and pressure resistance inspection to the cold and hot water supply pipelines.
2. Connect the water inlet and outlet pipes as shown in the figure below.



# Faucet installation

## II. Installation of main body part

1. Lay out the installation of the main body part according to the positions in the figure below.
2. Remove the preserving sleeve before installing the main body part.
3. As shown in the figure, use self-tapping screws below  $\phi 5$  to fix the main body part onto the wall. In fixing, the main body part keeps perpendicular to the wall surface.



4. After the main body part is installed (with the connector color mark facing up), install the preserving sleeve onto the main body part. In installation, the flat part of the preserving sleeve should align with the flat part of the connector.

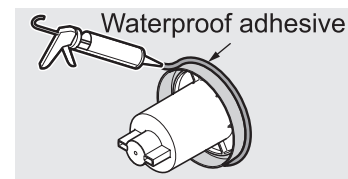
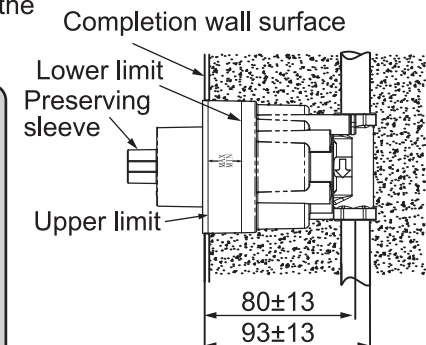
5. After installation, open the main valve of the pipe part. Rotate the preserving sleeve to confirm the water outlet direction as shown in the figure.

# Faucet installation

6. Install the preserving sleeve in the main body part and then use cement to fill the main body part.

## Attentions

- In installing the main body part, please do not remove the preserving sleeve.
- In installation, please pay attention to the burial depth of the main body part. Please ensure that the completion wall surface is between the MIN and MAX marks on the preserving sleeve. Completion wall surface hole dimension:  $\phi 90 \sim \phi 95$ .
- Connect the water inlet pipe with the main body part and add cement filling after confirming that there is no water leakage from the connection.



7. Apply a coat of waterproof adhesive at the gap between the main body part and the wall surface.

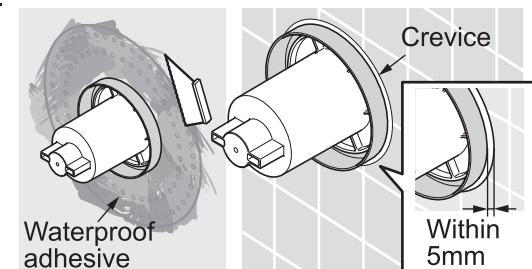
8. Apply a coat of waterproof adhesive on the wall surface and use a scraper to scrape flat. Then adhere the waterproof cloth onto the wall surface (The waterproof cloth should be firmly compacted and keep close to the wall surface).



9. Apply another coat of waterproof adhesive on the waterproof cloth and use a scraper to scrape flat. After the waterproof adhesive becomes dry, carry out construction to the completion wall surface.

## Attentions

- Please ensure the gap between the completion wall surface and the main body part within 5mm.

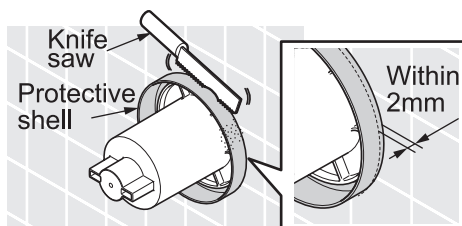




# Faucet installation

## III. Preparations before panel part installation

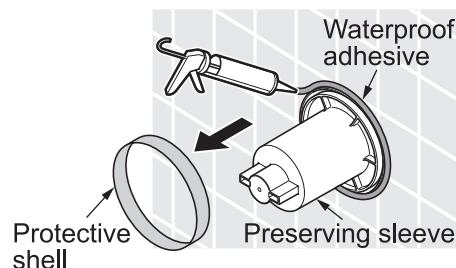
1. Use a knife saw to remove the part of the protective shell being convex from the wall surface. It is required to ensure that the space between the convex edge of the protective shell and the wall surface is within 2mm.



### Attentions

- In removing the protective shell for the main body part, it is imperative to pay attention that the cut edge is neat. (No edge will be recessed in the wall surface)
- In removing the protective shell, do not cut the preserving sleeve.

2. Apply evenly a coat of waterproof adhesive in the gap between the protective shell of the main body part and wall surface. The adhesive surface will not become convex from the wall surface.
3. Finally, remove and scrap the preserving sleeve.



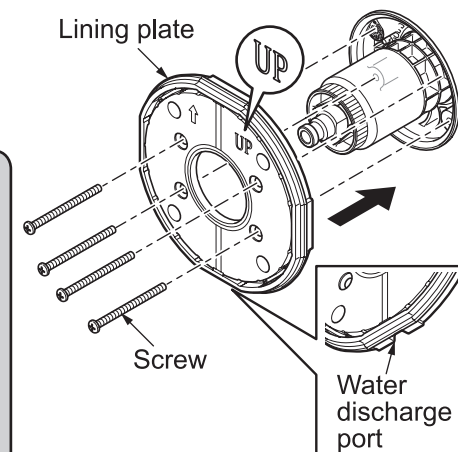
# Faucet installation

## IV. Panel part installation

1. Put on the main body part according to the "UP" indication on lining plate in an upward condition.
2. Use a screwdriver to fasten the screws on the lining plate.

### Attentions

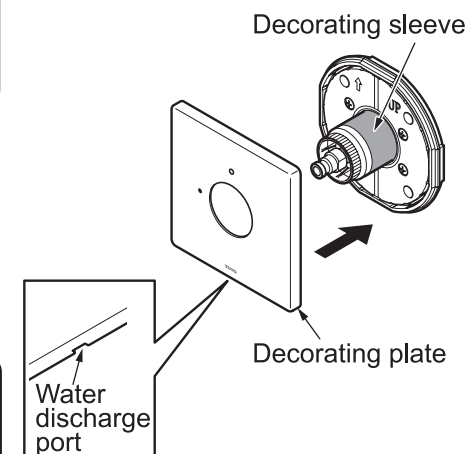
- Do not install by reversing the lining plate direction upside down, because the water discharge port is in the lower part.
- Do not use any sealant on the lining plate because there is foam sealing rubber strip on the lining plate and there is a water discharge port under it.
- In fastening the screws, the lining plate must be firmly compressed and there should no gap between the lining plate and the wall surface.
- The screws have to be turned with hand. Do not use an electric wrench for fastening.



3. Have the water discharge port of the decorating plate face downward and let it go through the decorating sleeve and put it on the lining plate.
4. The gap between the decorating plate and wall surface should be kept within 1mm.

### Attentions

- In installing the decorating plate, take care not to scratch the decorating sleeve.
- Do not apply any waterproof adhesive around the decorating plate, because there is a water discharge port under it.



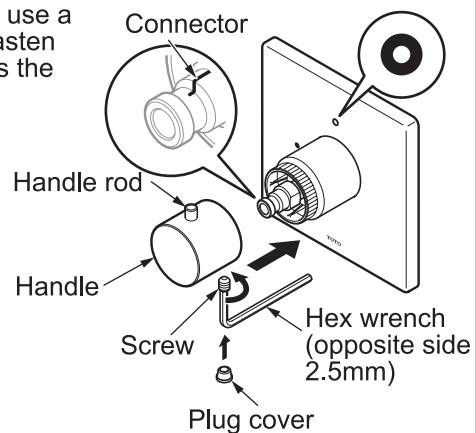


# Faucet installation

5. Take out the handle part and remove the plug cover from the handle. After inserting the handle rod into the connector upwards, use a hex wrench (opposite side 2.5mm) to fasten the screws to fix the handle. Then press the plug cover onto the handle.

## Attentions

- The handle rod should align with the marking ○ on the decorating plate (in case of TBV02101\*). In case of TBV02102\*, TBV02103\* and TBV02104\*, align with the position of marking "2".



TOTO Asia Oceania Pte. Ltd.

telephone: 65-6744-6955

FAX: 65-6841-0819

Address: 10 Eunos Road 8 #12-07 Singapore Post Centre  
Singapore 408600

Website: [asia.toto.com](http://asia.toto.com)

TOTO KOREA LTD.

전화번호 : (02)-3141-8236

FAX 번호 : (02)-3141-8240

주소 : 서울시 마포구 토정로 112(상수동, 로이코빌딩 3층)

홈페이지 : <http://www.totokr.co.kr>