

# TOTO

## 施工说明书 Instructions for construction

安装产品前请仔细阅读本施工说明书，并保留备用。  
Before product installation, read these instructions for  
construction carefully and retain it for future reference.

# TOTO

0G3781Y(C)  
2022.08

# 目录

## 目 录

目 录	1
明细单	2-4
使用条件与施工上的注意	5
施工上的注意和保养	6
安装完成图	7-12
水嘴的安装	13-21
生产厂家与销售商	22

# 明细单

## 明细单

吐水管部	1套
主体部	1套
手柄部	1个(双手柄水嘴场合为2套)
装饰板 (环)	1套(DLB202、DLB203、DLB204系列水嘴无)
排水金具	1套
固定接手部	1套(DLB202、DLB204、DLB309系列场合)
吐水口治具	1个(DLB203、DLB309系列场合)
施工说明书	1本
使用说明书	1本
使用此明细单的产品包括:	
DLB202 铜合金壁式双柄双控暗装洗面器水嘴(含排水配件)	

# 明细单

使用此明细单的产品包括:

DLB202#PG 铜合金壁式双柄双控暗装洗面器水嘴(含排水配件)

DLB202A 铜合金壁式双柄双控暗装洗面器水嘴(含排水配件)

DLB202A#PG 铜合金壁式双柄双控暗装洗面器水嘴(含排水配件)

DLB203-1 铜合金壁式双柄双控暗装洗面器水嘴(含排水配件)

DLB204-1 铜合金壁式双柄双控暗装洗面器水嘴(含排水配件)

DLB308 铜合金壁式单柄双控暗装洗面器水嘴(含排水配件)

DLB308#PG 铜合金壁式单柄双控暗装洗面器水嘴(含排水配件)

DLB309 铜合金壁式单柄双控暗装洗面器水嘴(含排水配件)

# 明细单

使用此明细单的产品包括:

DLB309-1 铜合金壁式单柄双控暗装洗面器水嘴(含排水配件)

# 使用条件与施工上的注意

## 使用条件

- 1.供冷水\*热水压力：
- 最低压力……………0.05MPa（流动压）
- 最高压力……………1.0MPa（静压）
- 2.供水温度在4℃～90℃，建议使用热水温度60±5℃，供热水请勿使用蒸汽。
- 3.使用环境温度0℃以上。如果低于0℃，水嘴会出现变形、冻裂等现象。
- 4.长时间不使用时，可能导致水嘴内部及外部锈蚀不能使用等现象。
- 5.如果您需要废弃本产品，请勿将其作为一般生活垃圾处理，请依照法规经由独立的回收体系进行合适的处理、恢复和回收。
- 6.本说明书中的产品具有清洗功能。

## 施工上的注意

-  **警告** 表示如果无视此标志而误操作时，有可能造成人员重伤或死亡。
-  **注意** 表示如果无视此标志而误操作时，有可能造成人身伤害或财产损失。

### 警告

- 1.水嘴的供热水一侧处于高温状态，请注意勿使皮肤直接接触五金配件表面，否则可能会烫伤。
- 2.请勿配反冷\*热水配管，否则可能会烫伤。
- 3.供热水请勿使用蒸汽，否则可能会烫伤。
- 4.施工时本产品的G1/2或G3/4内螺纹请勿与R1/2或R3/4接头安装使用，否则可能会造成主体螺纹处开裂、漏水等不良。

# 施工上的注意与保养

## 注意

- 1.由于陶瓷阀芯是较精密的部件，请勿擅自分解，否则可能会造成漏水等不良。
- 2.请勿撞击本产品，否则可能会造成事故、漏水。
- 3.必须使用中性洗涤剂清洗，中性以外的洗涤剂会破坏镀层或使表面变色。
- 4.不得使用酸性洗涤剂和去污粉、抛光粉等含粗颗粒的洗涤剂和尼龙刷，否则可能会破坏镀层等。
- 5.可使用软布擦拭，间或用机油或车用蜡浸布擦拭，但请勿接触树脂部件，否则可能失去光泽和产生锈蚀。
- 6.建议不要长时间不使用，否则可能会导致水嘴内部以及外部锈蚀不能使用等现象。
- 7.随着产品式样的不断更新，实物存在与图示不符的情况，但基本安装、使用原理相同。
- 8.在可能结冰的场所使用时，要切实做好防冻措施。因结冰，零件破损，有可能导致漏水，造成财产损失。因结冰而造成的破损即使在保修期内也是有偿修理。请不要让产品的环境温度低于0℃。

## 防冻措施

- 在可能结冰的场所使用时，要切实做好防冻措施。
- 1.产品结冰的话零件损坏，成为漏水的原因。
- 2.因结冰造成的零件破损即使在保修期也是有偿修理。
- 3.施工完了后或长时间不使用时，要有预防突然降温的准备，要对产品进行结冰预防。
- 4.因为有结冰的危险，请不要让产品周围的温度在0℃以下。

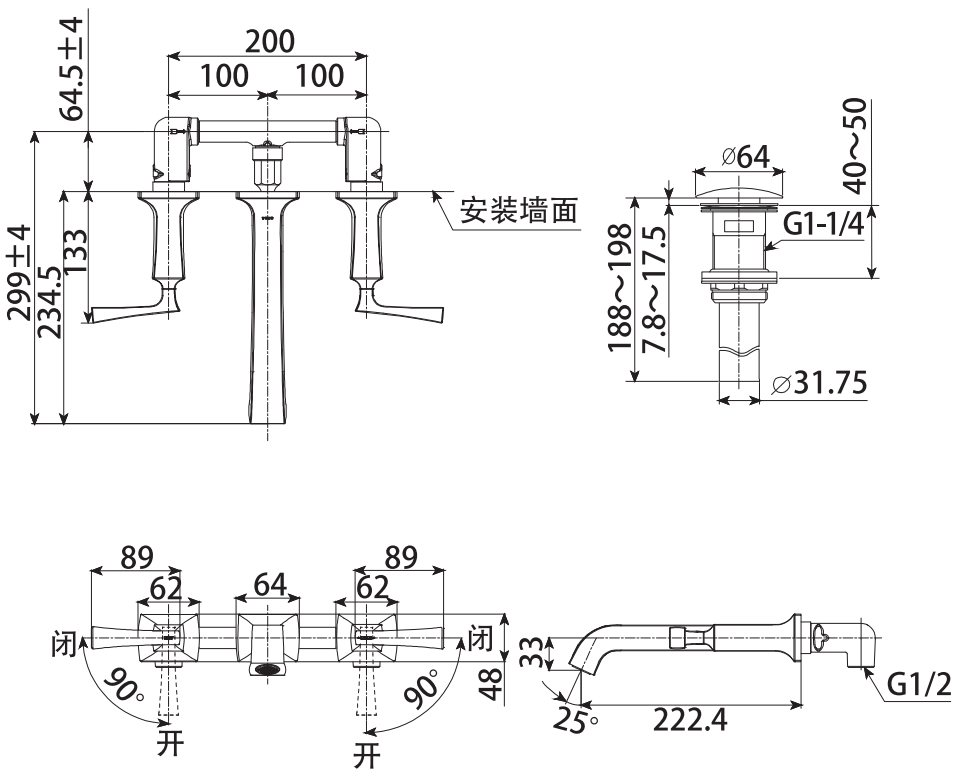
## 保养

- 为长期保持产品的美观，请用户按以下方法维护保养。
- 1.经常用软布擦拭，间或用软布蘸水擦拭。
- 2.当有污垢且比较明显时，请用中性洗涤剂擦拭后充分进行水洗。



# 安装完成图

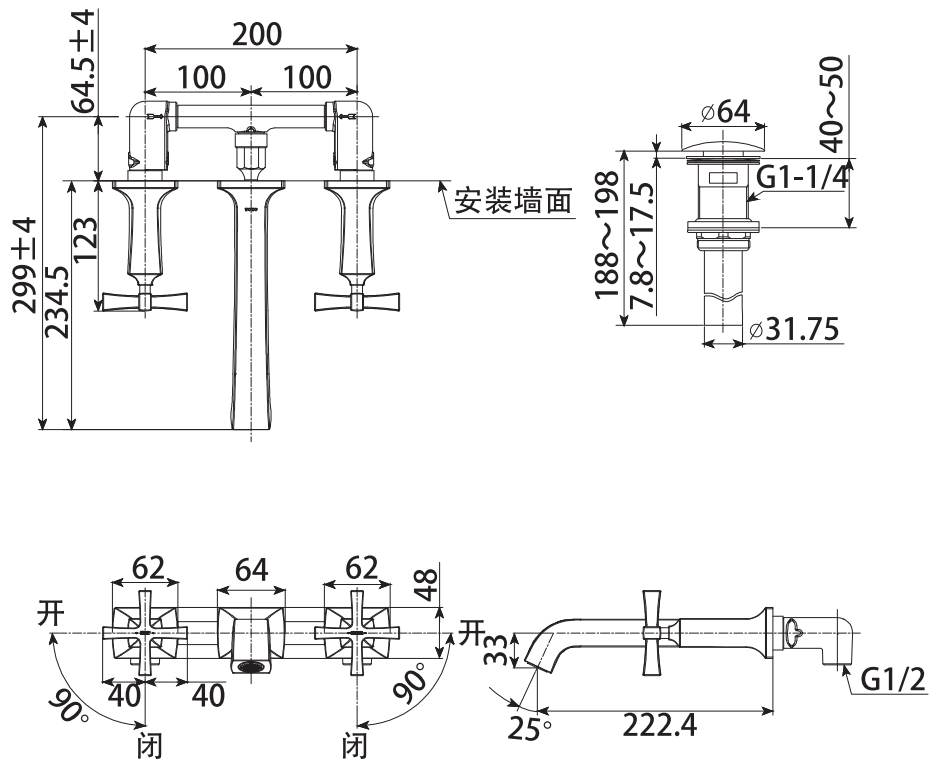
DLB202 铜合金壁式双柄双控暗装洗面器水嘴(含排水配件)



注： ( ) 内为建议安装尺寸，上记尺寸单位为mm。

# 安装完成图

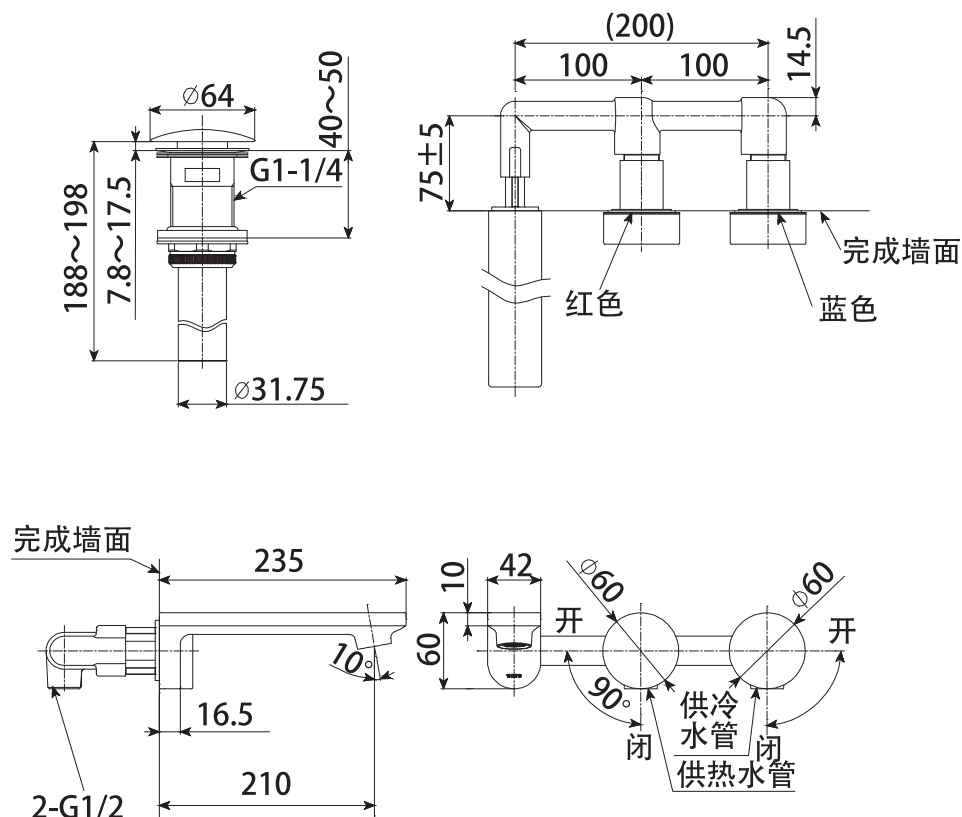
DLB202A 铜合金壁式双柄双控暗装洗面器水嘴(含排水配件)



注： ( ) 内为建议安装尺寸，上记尺寸单位为mm。

# 安装完成图

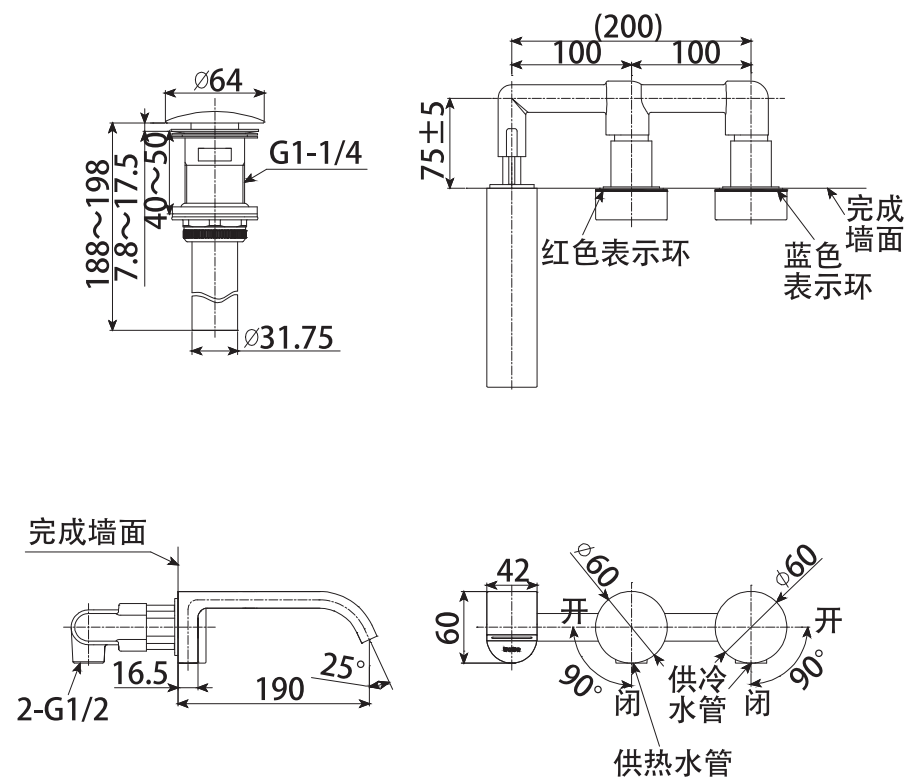
DLB203-1 铜合金壁式双柄双控暗装洗面器水嘴(含排水配件)



注： ( ) 内为建议安装尺寸，上记尺寸单位为mm。

# 安装完成图

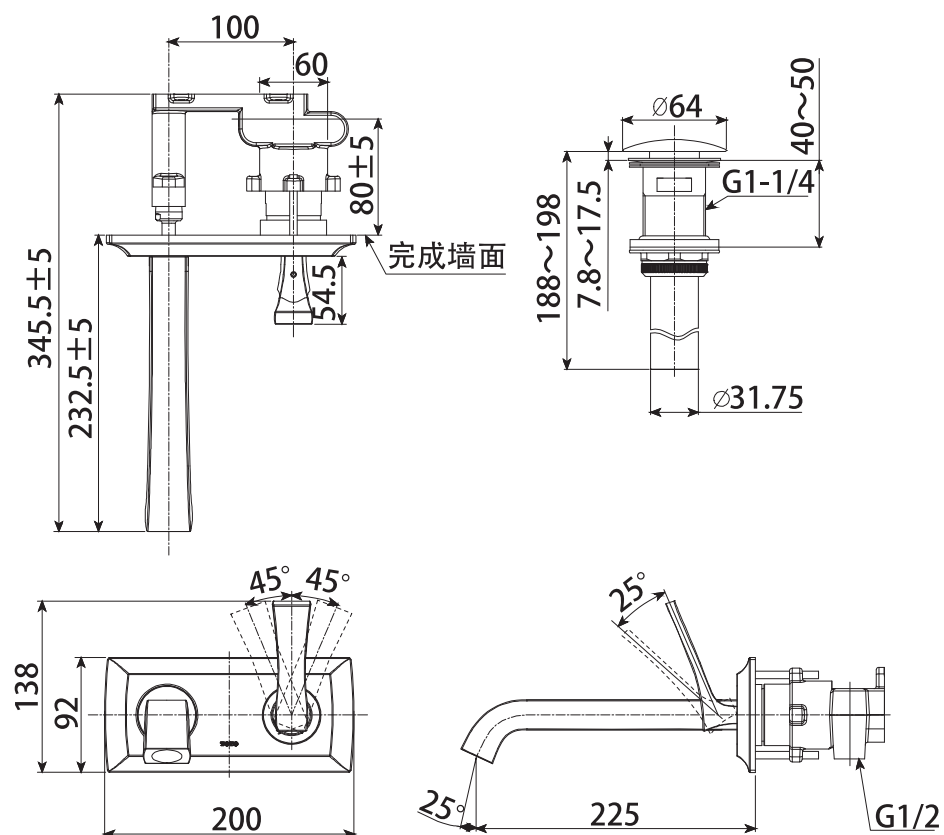
DLB204-1 铜合金壁式双柄双控暗装洗面器水嘴(含排水配件)



注： ( ) 内为建议安装尺寸，上记尺寸单位为mm。  
为了达到更好的吐水效果，建议使用0.1Mpa以上的流动压。

# 安装完成图

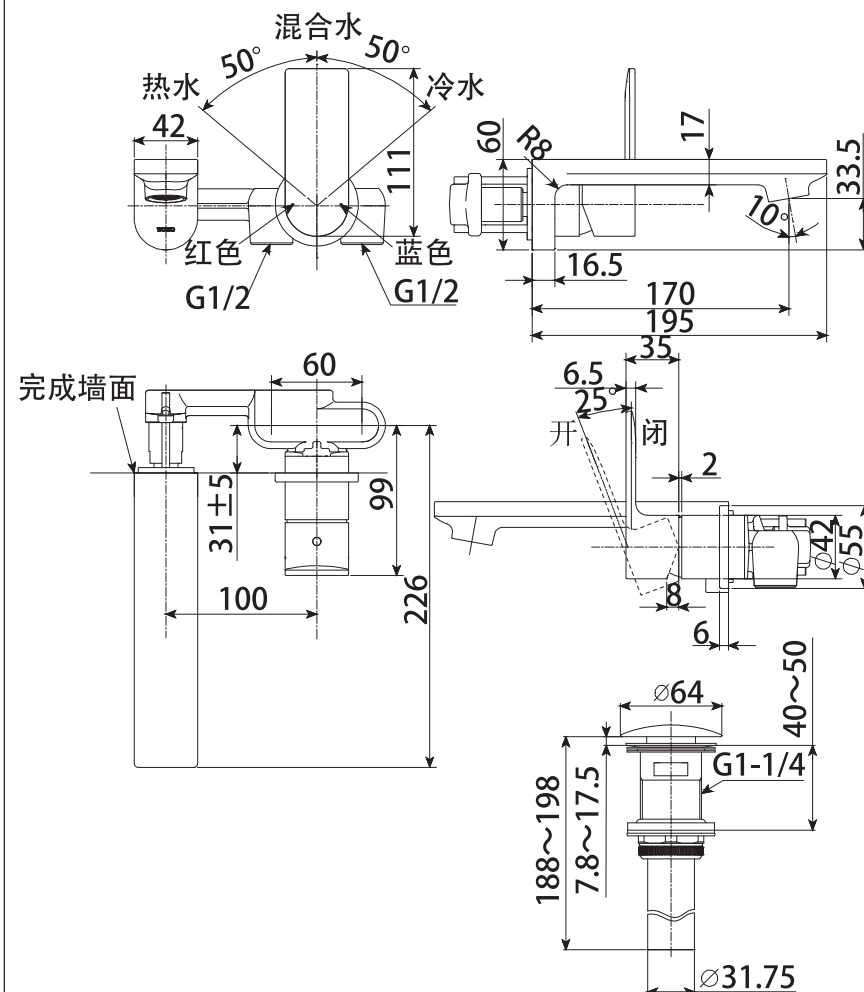
DLB308 铜合金壁式单柄双控暗装洗面器水嘴(含排水配件)



注： ( ) 内为建议安装尺寸，上記尺寸单位为mm。

# 安装完成图

DLB309 铜合金壁式单柄双控暗装洗面器水嘴(含排水配件)



注： ( ) 内为建议安装尺寸，上記尺寸单位为mm。  
DLB309-1吐水主体比图尺寸长40mm，其他尺寸一致。

# 水嘴的安装

## 1.供水管内的清扫

安装之前，一定要冲净供水管内的灰尘、砂砾等异物；安装过程中也应充分注意勿使泥沙等杂质进入水嘴或供水管内。

## 2.水嘴主体的安装

①事先把水嘴主体和相应的管子连接好，然后参照图示尺寸在墙面开槽。

△注意：a.在水嘴安装前，务必试水，以防漏水等不良。

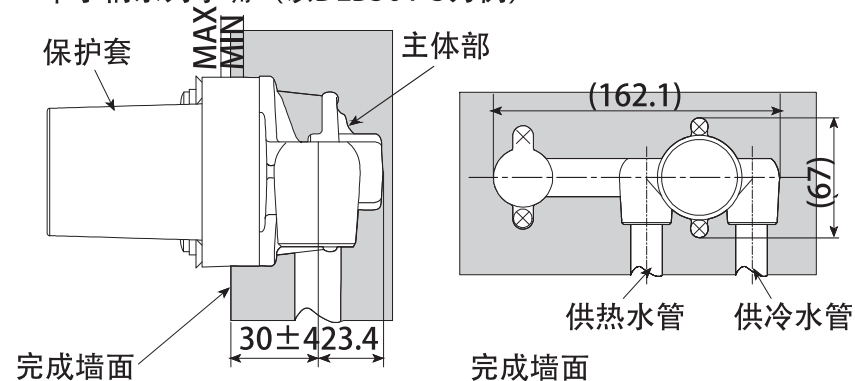
b.在开槽时，务必满足图示尺寸。

②如图所示，用水泥等填料将产品安装在墙内。

△注意：a.露出墙外的部分不得沾上水泥等建筑材料。

b.安装时产品应与墙面保持垂直。

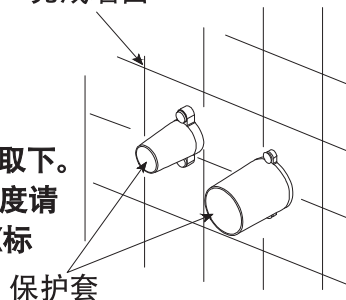
单手柄系列水嘴（以DLB301-3为例）



△注意：

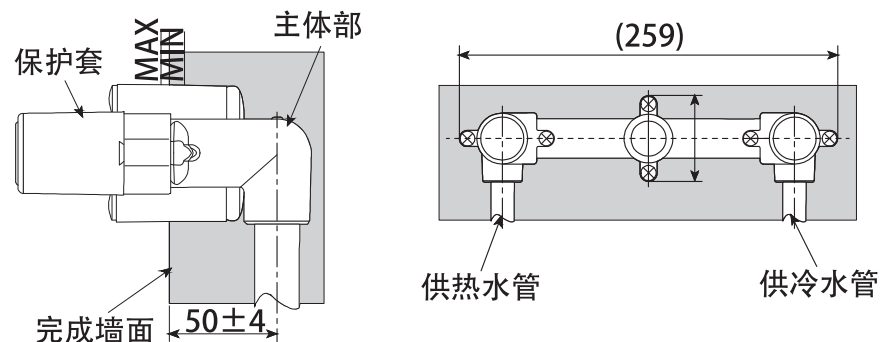
a.安装埋墙主体时，请不要将保护套取下。  
b.安装时，请注意埋墙主体的埋入深度请保证完成墙面在保护套上MIN~MAX标志之间。

c.进水管与埋墙主体连接并确认各连接处不漏水再加水泥填料。

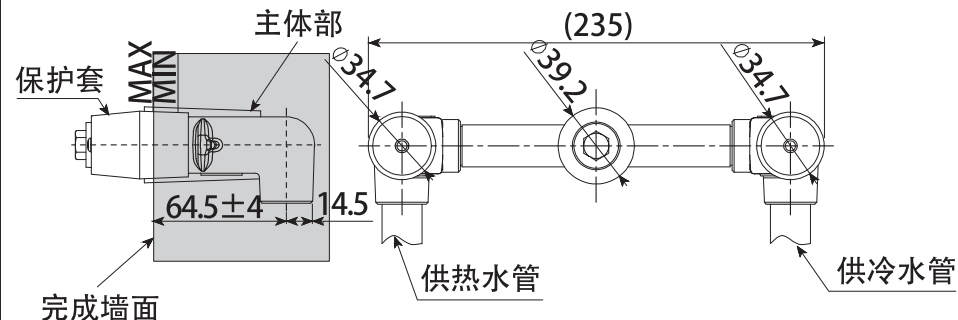


# 水嘴的安装

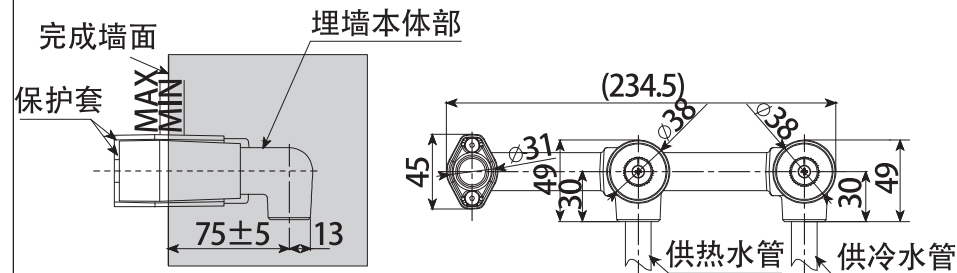
双手柄系列水嘴(以DLB201-3R为例)



DLB202系列水嘴



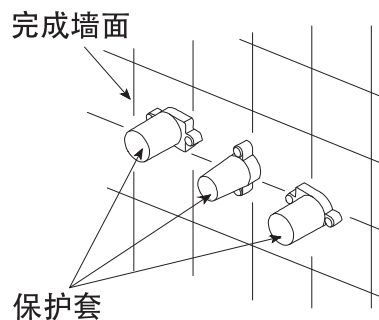
DLB203系列水嘴



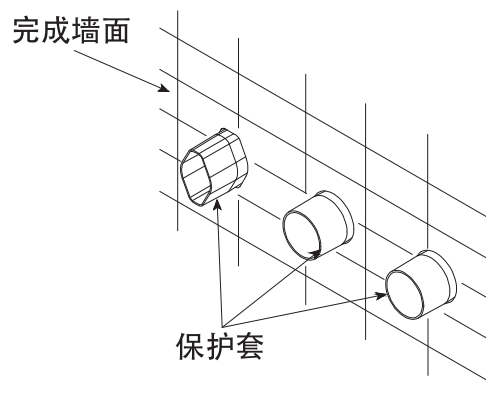
# 水嘴的安装

## △注意：

- 安装埋墙主体时，请不要将保护套取下。
- 安装时，请注意埋墙主体的埋入深度请保证完成墙面在保护套上MIN~MAX标志之间。
- 进水管与埋墙主体连接并确认各连接处不漏水再加水泥填料。



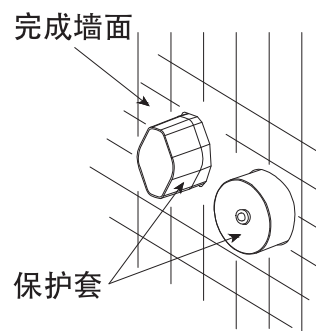
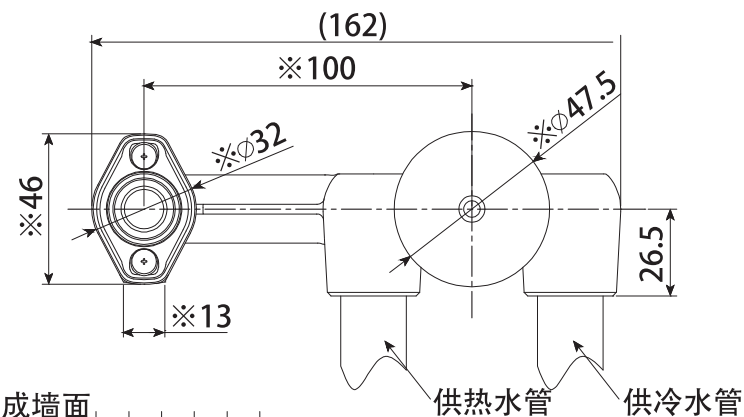
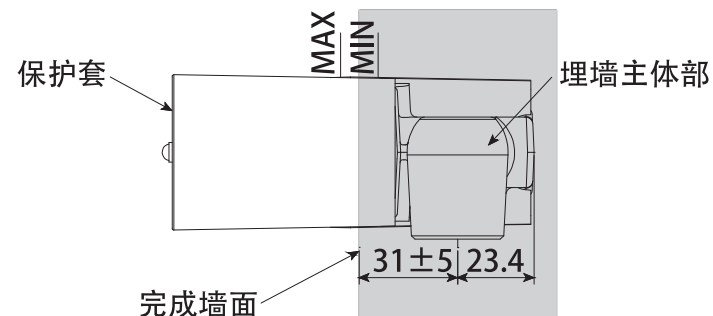
DLB202系列水嘴



DLB203系列水嘴

# 水嘴的安装

## DLB309系列水嘴



△注意：完成墙面（瓷砖）开孔时请务必参照图中保护套上“※”所示尺寸进行开孔，否则水嘴安装时可能会出现问題。

# 水嘴的安装

## 3.装饰板、手柄及吐水管的安装

### a.单手柄系列水嘴

#### △注意：DLB308场合：

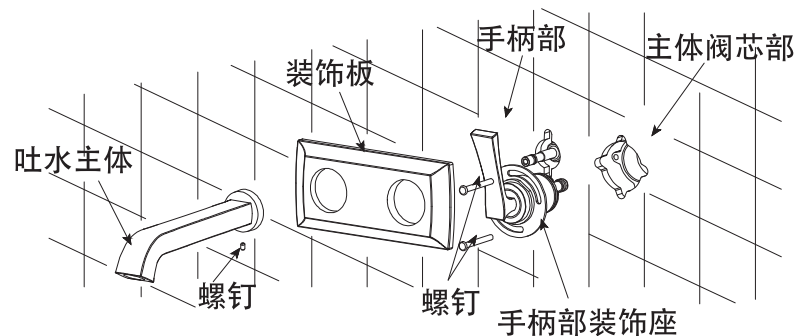
- ①将保护套取下。
- ②将手柄部的两个进水接手对准主体阀芯部装入，用螺钉将手柄部紧固在主体上，直到手柄部装饰座端面与墙面保证2mm的距离为止。
- ③将手柄打开，用装饰板套入手柄部并固定在手柄部装饰座上。
- ④最后装上吐水主体，并用螺钉拧紧。

#### △注意：(1)手柄部的两个进水接手务必对准主体阀芯部内的两个进水孔。

(2)手柄安装时朝上。

(3)为方便安装，装饰板和吐水主体附带的两个O型圈安装过程中可涂少量肥皂水进行润滑。

(4)装饰板安装过程中，注意不要将主体划伤。

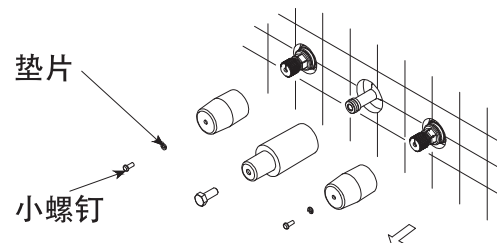


# 水嘴的安装

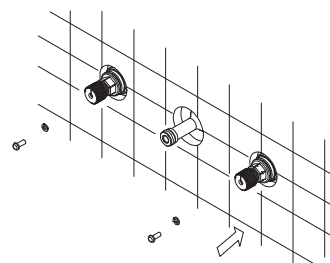
## b.双手柄系列水嘴

### △注意：DLB202系列水嘴场合

- ①将保护套取下，小螺钉及垫片留用。(△注意：安装完后保护套将不再起作用)



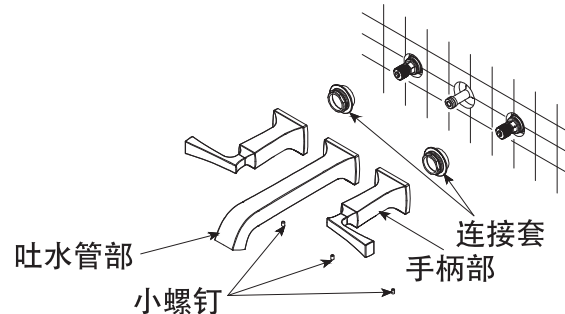
- ②将小螺钉及垫片旋入两侧阀芯上。





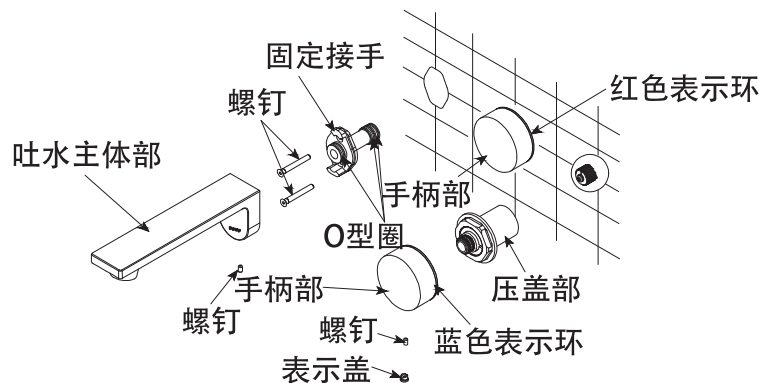
# 水嘴的安装

- ③将连接套分别旋入两侧阀芯上，与墙壁紧贴。将手柄部花键插入阀芯，旋入小螺丝紧固。（△注意：手柄杆向外侧横向放置。）吐水管部与墙内接手处对齐插入，旋入小螺丝将吐水管部紧固。  
（△注意：为方便安装接手处O型圈可涂少量肥皂水进行润滑。）



## △注意：DLB203、DLB204系列水嘴场合

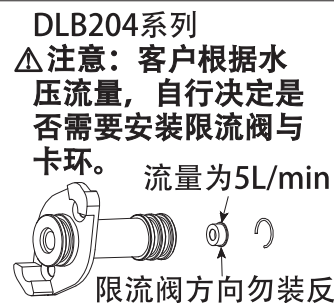
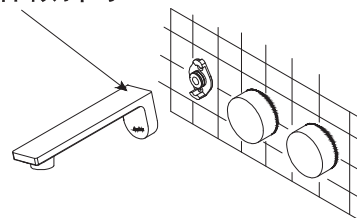
- ①将保护套取下，吐水主体的保护套上的螺钉留用。（△注意：安装完后保护套将不再起作用）
- ②将手柄压盖部旋进埋墙主体上，并用扳手紧固到墙面上。
- ③将手柄部套在压盖部的花键接手上，再用小螺钉紧固住，最后将表示盖扣到手柄部上。（△注意：红蓝表示环已扣入手柄里）
- ④将吐水主体接手部插入埋墙主体里扣到墙面上，并用2个螺钉紧固。



# 水嘴的安装

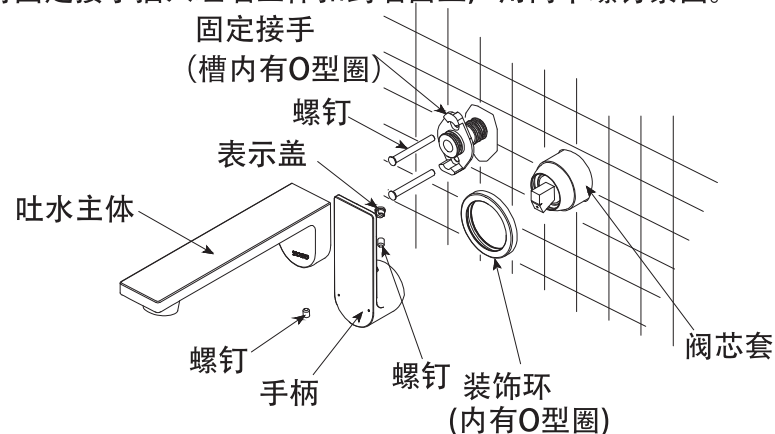
- ⑤如图2所示，将吐水主体约15°，使劲插入固定接手部上，然后旋转主体至水平状态，确保吐水主体后端的卡爪已卡入固定接手里，然后用小螺钉紧固本体。（△注意：安装过程中不要划伤O型圈，为方便安装O型圈可涂少里的肥皂水进行润滑）

吐水主体倾斜约15°



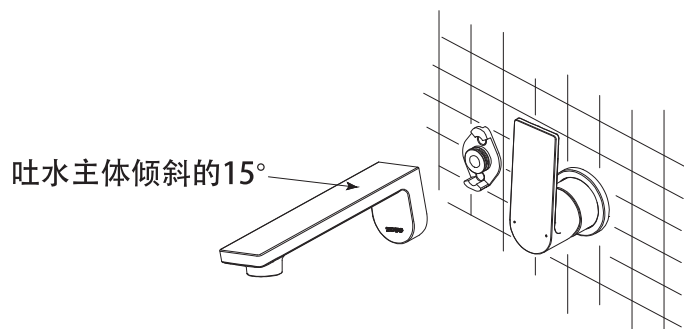
## △注意：DLB309系列水嘴场合

- ①将保护套取下，吐水主体保护套上的螺钉留用。（△注意：安装完后保护套将不再起作用）
- ②将装饰环套在阀芯套上，贴紧墙面即可。（△注意：为方便安装可将装饰环内的O型圈涂少量的肥皂水进行润滑；装饰环两面的光滑面朝外侧）
- ③将手柄安装在阀芯上（△注意：手柄杆朝上），用螺钉拧紧，再安装表示盖。
- ④将固定接手插入埋墙主体扣到墙面上，用两个螺钉紧固。

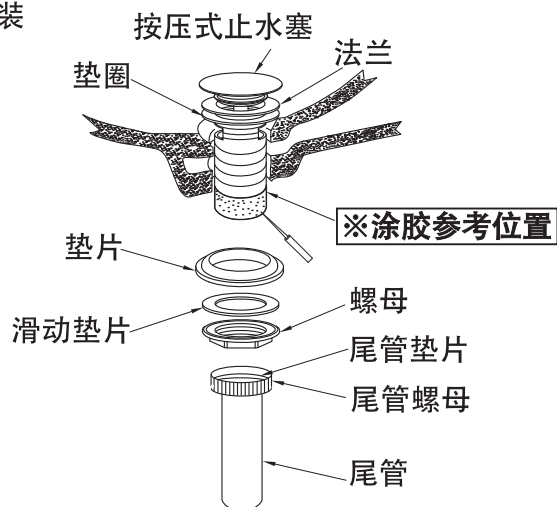


# 水嘴的安装

⑤如图所示，将吐水主体约15°，使劲插入固定接手上，然后回转主体至垂直状态，确保吐水主体后端的卡爪已卡入到固定接手里，然后用小螺钉紧固主体。（△注意：为方便安装可将固定接手上的O型圈涂少量的肥皂水进行润滑；安装过程中注意不要划伤O型圈）



## 4.排水金具的安装



如图所示，将法兰和垫圈放入洗脸盆的安装孔中，与垫片接触的螺纹部整周均匀涂抹适量的长效防霉型中性硅酮密封胶，依次将垫片、滑动垫片、螺母安装到法兰的螺纹上，再将螺母拧紧，使排水金具与洗面盆充分紧固，最后拧紧尾管螺母将尾管部分固定在法兰上。

※紧固螺母时将其拧紧即可，不要使用猛力，避免洗面盆陶瓷破损。

# 生产厂家与销售商

执行标准：GB 18145-2014、GB 25501-2019

产品型号：见包装箱上的标签

产品名称：见包装箱上的标签

生产日期：见包装箱上的标签

组装工厂：东陶(大连)有限公司

电 话：(0411)87624383

厂 址：大连经济技术开发区东北二街17号

东陶(中国)有限公司

全国售后服务电话：800-820-9787(固定电话)

400-820-9787(手机用户)

销售商：东陶(中国)有限公司

地 址：北京市朝阳区光华路1号 北京嘉里中心北楼1915室

网 址：www.toto.com.cn

# Contents

## Contents

Contents .....	1
Detailed list .....	2-3
Use conditions and attentions in construction.....	4
Attentions in construction and maintenance .....	5-6
Installation completion figure .....	7-12
Water nozzle installation .....	13-21
Manufacturer and vendor.....	22

# Detailed list

## Detailed list

Water outlet pipe part.....	1 set
Body part .....	1 set
Handle part .....	1 set (2 Set in case of double handle water nozzle)
Decorative plate(ring).....	1 set (None for DLB202,DLB203, DLB204 series water nozzle)
Water drainage fittings .....	1 set
Fixed receiving hand part .....	1 set (In case of DLB203,DLB204, DLB309)
Water outlet fixture .....	1 piece (In case of DLB203and DLB309)
Instructions for construction ...	1 copy
Instructions for operation .....	1 copy

The products using this detailed list include:

DLB202 Copper alloy wall-mounted type double-concealed basin water faucet  
(including water drainage accessories)

# Detailed list

The products using this detailed list include:

- DLB202#PG Copper alloy wall-mounted type double-concealed basin water faucet  
(including water drainage accessories)
- DLB202A Copper alloy wall-mounted type double-concealed basin water faucet  
(including water drainage accessories)
- DLB202A#PG Copper alloy wall-mounted type double-concealed basin water faucet  
(including water drainage accessories)
- DLB203-1 Copper alloy wall-mounted type double-concealed basin water faucet  
(including water drainage accessories)
- DLB204-1 Copper alloy wall-mounted type double-concealed basin water faucet  
(including water drainage accessories)
- DLB308 Wall Mounted Single Lavatory Faucet  
(including water drainage accessories)
- DLB308#PG Wall Mounted Single Lavatory Faucet  
(including water drainage accessories)
- DLB309 Wall Mounted Single Lavatory Faucet  
(including water drainage accessories)
- DLB309-1 Wall Mounted Single Lavatory Faucet  
(including water drainage accessories)

# Use condition and attentions in construction

## Use condition

1. Cold water supply\*hot water supply pressure  
Minimum pressure ..... 0.05MPa (flow pressure)  
Maximum pressure.....1.0 MPa (static pressure)
2. The temperature for water supply is 4~90°C,It is suggested to use the hot water temperature of 60±5°C.Do not use steam to supply hot water.
3. The ambient temperature for use is above 0°C. If the ambient temperature is lower than 0°C, the faucets will deform and crack from freezing.
4. Being out of use for a long time may result in internal and external rust to the faucet and being unable to be used.
5. If you want to scrap this product, do not treat it as you do for general household garbage. Please follow relevant statutes to have it treated, recovered and collected appropriately by an independent recovery system.
6. The product in these instructions has a cleaning function.

## Attentions in construction



**Warning:**it means that ignoring this mark and misoperation may cause serious personal injury and death.



**Attention:** it means that ignoring this mark and misoperation may cause personal injury or property loss.

## Warning

1. The hot water supply side of the faucet is in a condition of high temperature.Do not allow skin to contact with the hardware surface directly. Otherwise, scalding may occur.
2. Do not reverse cold\*hot water pipes.Otherwise,scalding may occur.
3. Do not use steam to supply hot water. Otherwise, scalding may occur.
4. In constuction,do not install and use the G1/2 or G3/4 internal threads of this product with R1/2 or R3/4 connector. Otherwise,the main body threads may crack,resulting in such quality problems as water leakage,etc.

## Attentions in use and maintenance

### Attentions

1. As the ceramic cartridge is a precise component, do not dismantle it without authorization. Otherwise, such poor conditions as water leakage, etc. may be caused.
2. Do not impact the product. Otherwise, failure, water leakage may occur.
3. It is imperative to use a neutral detergent in cleaning. Other detergents than a neutral one may damage the plating coat or make the surface discolor.
4. Do not use any such detergent as acidic detergent and abturgent, polishing powder, etc. containing thick particles and nylon brush. Otherwise, the plating coat may be damaged, etc.
5. It is allowed to use a piece of soft cloth to wipe or use from time to time a piece of cloth immersed in machine oil or vehicle wax to wipe. However, do not contact with resin components. Otherwise, they may lose the gloss and become rusty.
6. It is suggested not to leave it unused for a long time. Otherwise, this may lead to internal and external rust to faucets to such a degree that it cannot be used any more, etc.
7. With the product design being updated constantly, the physical object may not coincide with the figure. However, the basic principle for installation, use is the same.
8. When using in places where icing may occur, anti-freezing measures must be taken. The parts will be damaged due to icing, which may cause water leakage and property loss. Damages caused by icing are repaired for a fee even during the warranty period. Please ensure that the ambient temperature of the product is always above 0°C.

## Attentions in use and maintenance

### Anti-freezing measures

When using in places where icing may occur, anti-freezing measures must be taken.

1. The parts will be damaged due to icing, which may cause water leakage.
2. Damaged parts caused by icing are repaired for a fee even during the warranty period.
3. After the construction is completed or when it is not used for a long time, prepare to prevent sudden drop of temperature and prevent the product from icing.
4. Because of the risk of icing, please ensure that the ambient temperature of the product is always above 0°C.

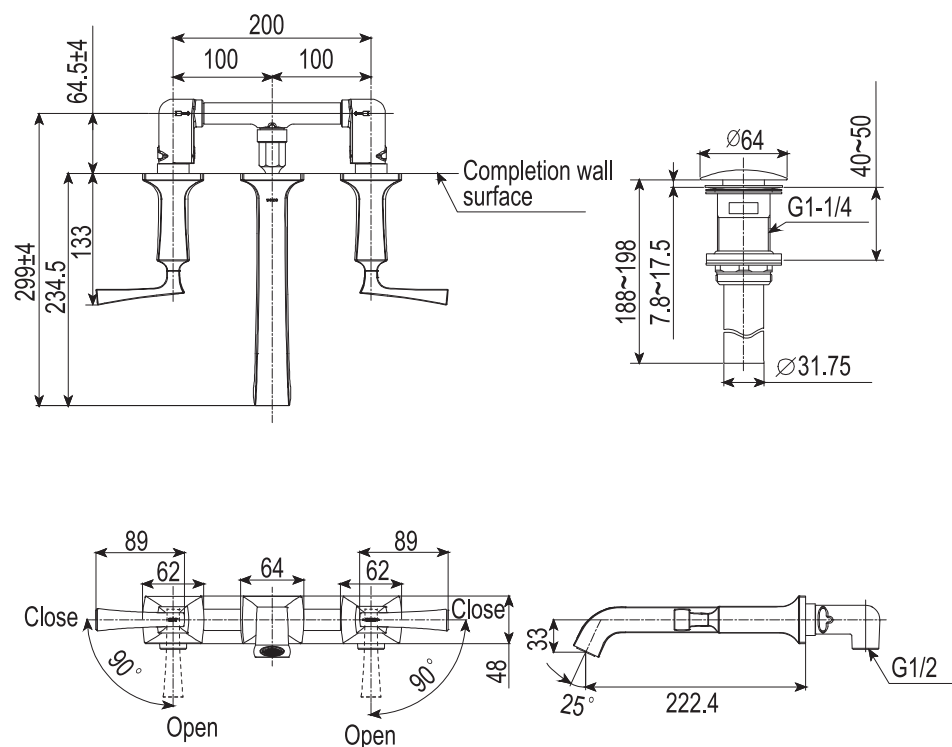
### Maintenance

To maintain a beautiful appearance of the product, the user is requested to conduct maintenance and care in the following method.

1. Wipe with a piece of soft cloth frequently and use a piece of soft cloth dipped in water to wipe from time to time.
2. When dirt exists obviously, please use water to wash sufficiently after wiping with a neutral detergent.

# Installation completion figure

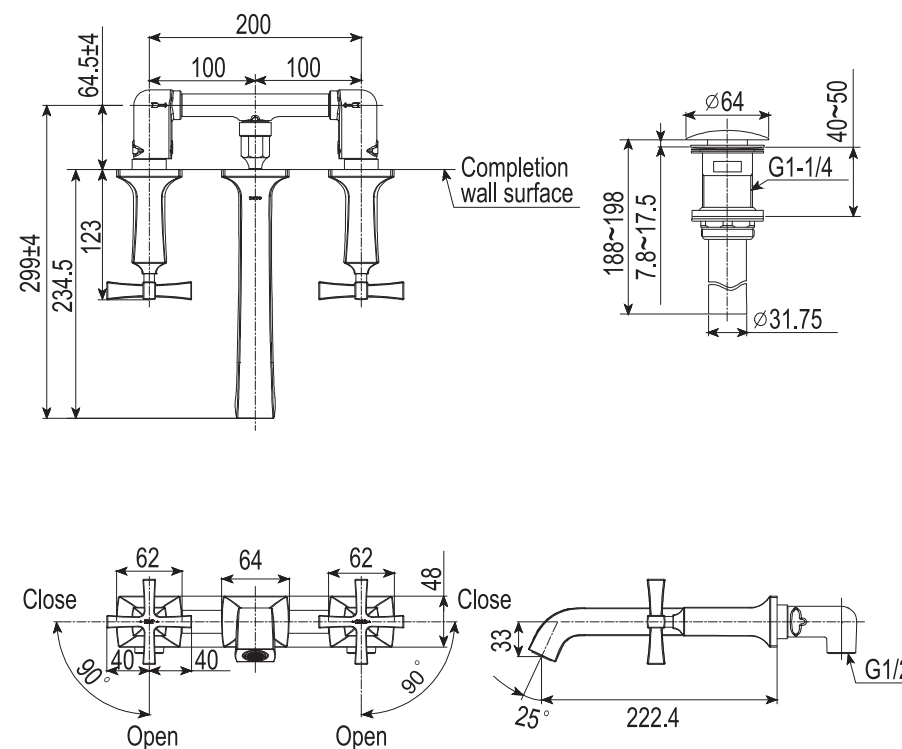
DLB202 Copper alloy wall-mounted type double-concealed basin water faucet  
(including water drainage accessories)



※The dimension in ( ) is the recommended installation dimension.  
The dimensional unit for the above figure is mm.

# Installation completion figure

DLB202A Copper alloy wall-mounted type double-concealed basin water faucet  
(including water drainage accessories)

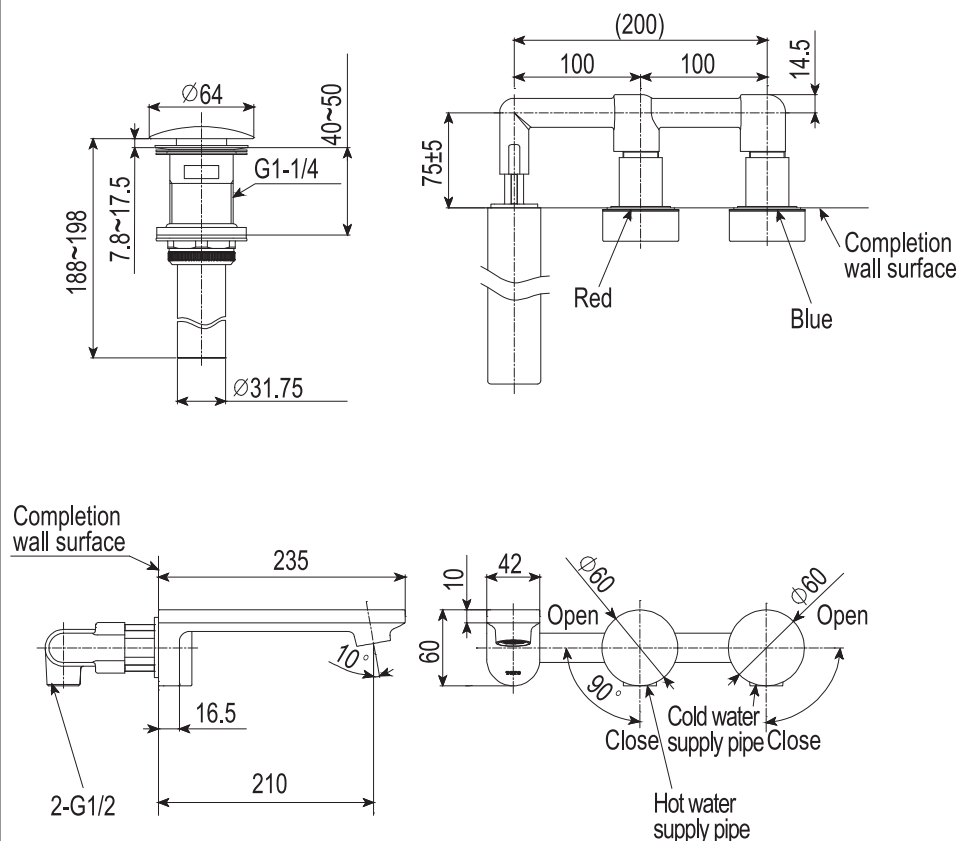


※The dimension in ( ) is the recommended installation dimension.  
The dimensional unit for the above figure is mm.



# Installation completion figure

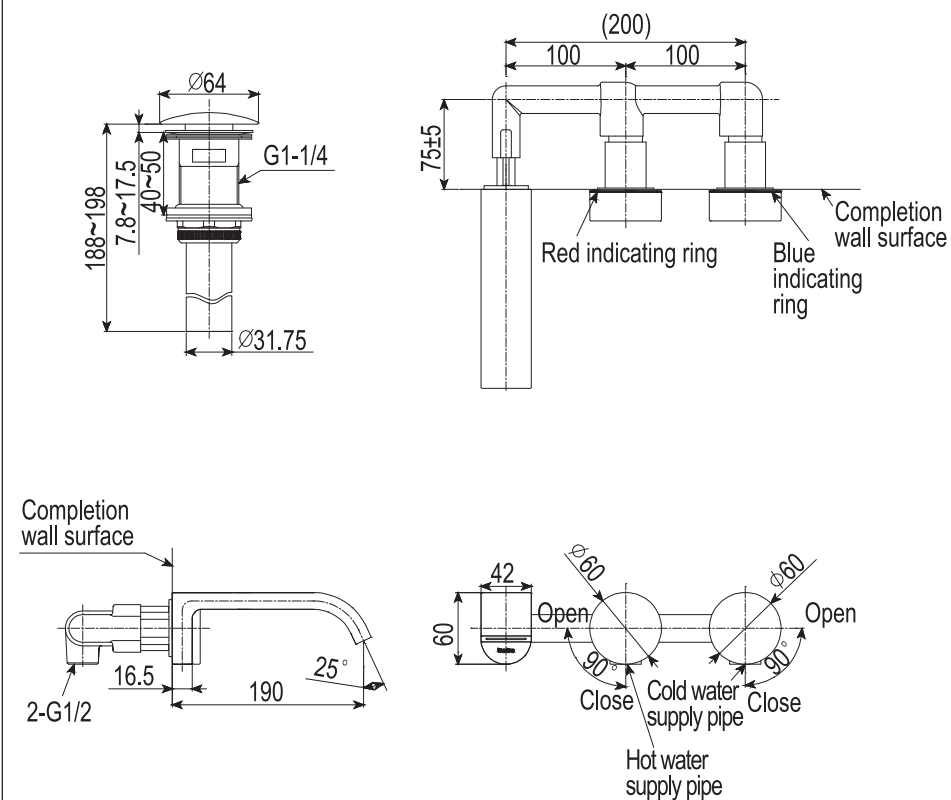
DLB203-1 Copper alloy wall-mounted type double-concealed basin water faucet  
(including water drainage accessories)



※The dimension in()is the recommended installation dimension.  
The dimensional unit for the above figure is mm.

# Installation completion figure

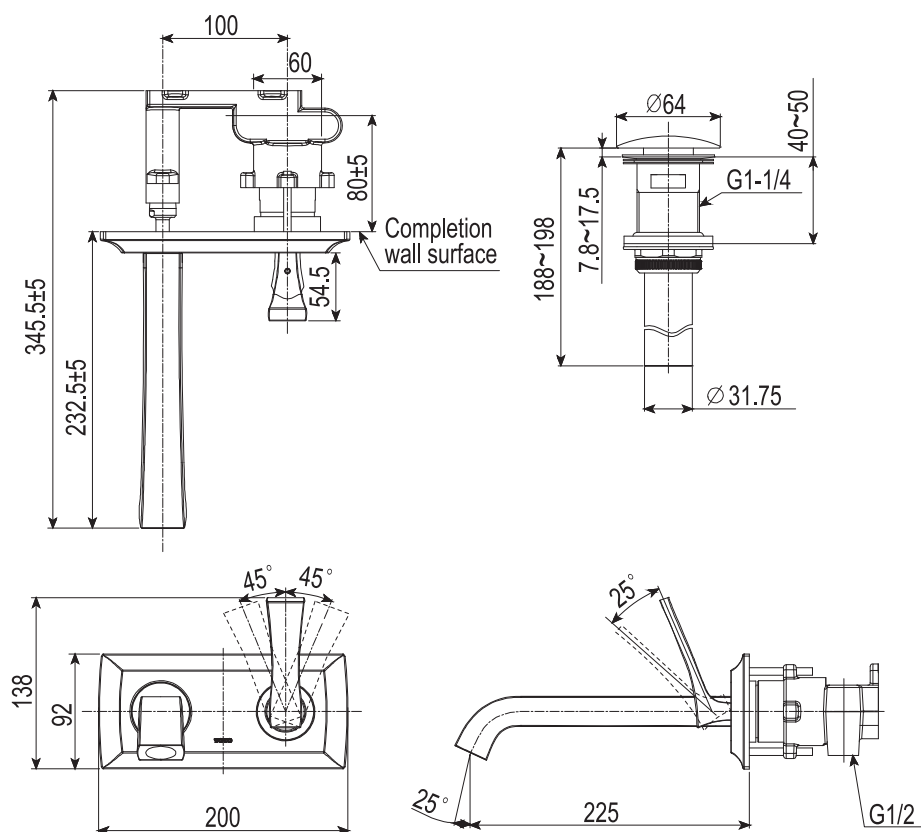
DLB204-1 Copper alloy wall-mounted type double-concealed basin water faucet  
(including water drainage accessories)



※The dimension in()is the recommended installation dimension.  
The dimensional unit for the above figure is mm.  
To get a better outlet effect,it is advised to use a flow pressure of over 0.1 Mpa.

# Installation completion figure

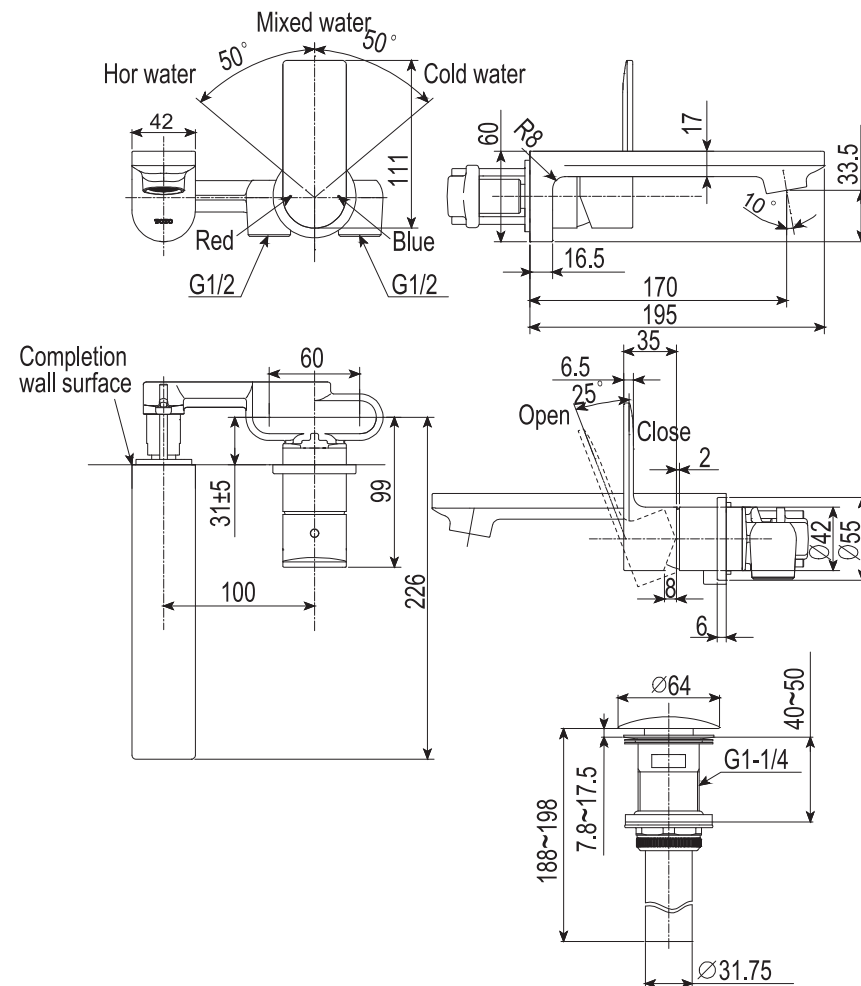
DLB308 Wall Mounted Single Lavatory Faucet (including water drainage accessories)



※The dimension in()is the recommended installation dimension.  
The dimensional unit for the above figure is mm.

# Installation completion figure

DLB309 Wall Mounted Single Lavatory Faucet (including water drainage accessories)



※The dimension in()is the recommended installation dimension.  
The dimensional unit for the above figure is mm.  
The water outlet body of DLB309-1 is 40mm longer than the dimension as shown in the figure. Other dimensions are the same.

# Water nozzle installation

## 1. Cleaning in the water supply pipe

Before installation, be sure to remove by washing such foreign matters as dust, sand, etc. in the water supply pipe; in installation, it is imperative to also take care sufficiently not to allow such foreign matters as mud and sand, etc. to enter into the water nozzle or the water supply pipe.

## 2. Installation of main water nozzle body

① As shown in Fig. 1, connect properly the main water nozzle body and corresponding pipe beforehand and then cut a slot on the wall surface by referring to the dimensions as shown in the figure.

⚠ **Attentions:** a. Before water nozzle installation, be sure to do a water test to prevent water leakage, etc.

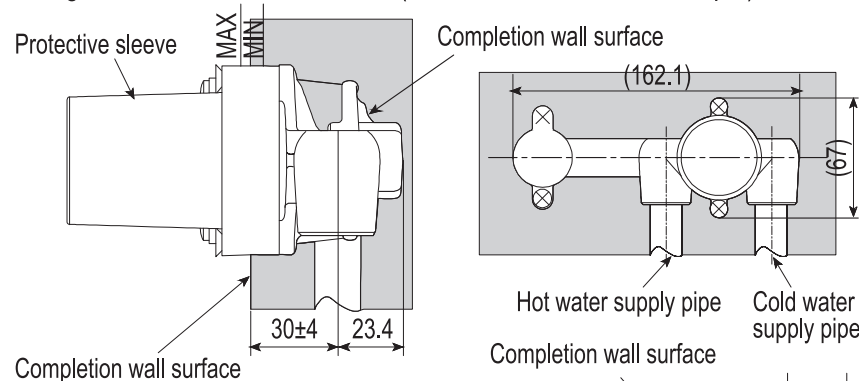
b. In cutting slot, be sure to meet the dimensions as shown in the figure.

② As shown in the figure, use such filling as cement, etc. to install the product in the wall.

⚠ **Attentions:** a. The exposed part from wall must not contact with such building materials as cement, etc.

b. In installation, the product should be kept perpendicular to the wall surface.

### Single handle series water nozzle (Take DLB301-3 as an example)

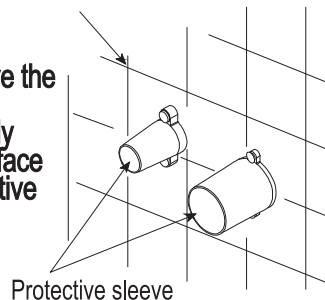


## ⚠ **Attentions:**

a. When installing the body buried in wall, do not remove the protective sleeve.

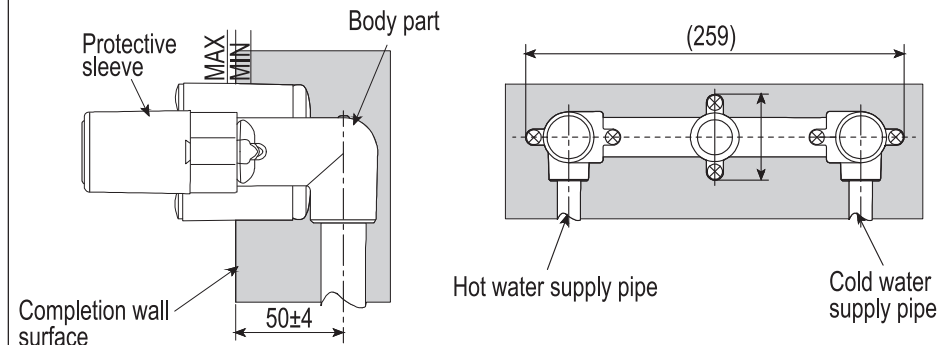
b. In installation, please note the burial depth of the body buried in wall. Please ensure the completion wall surface to be between the markings MIN-MAX on the protective sleeve.

c. Connect the water inlet pipe and the body buried in wall and confirm that no water leaks from different connecting locations. Then add cement filling.

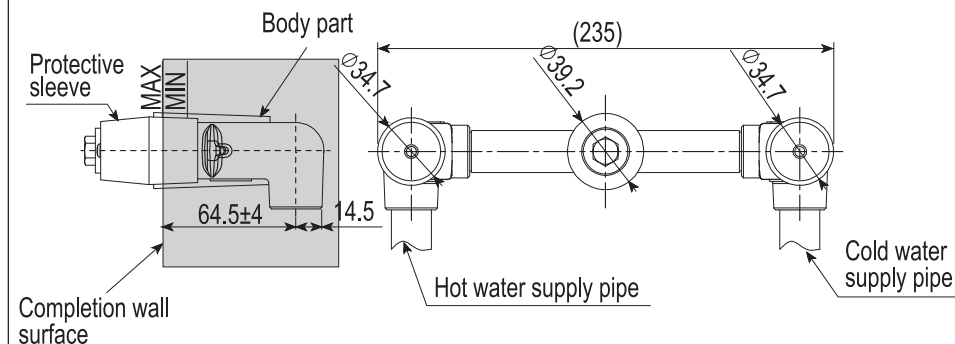


# Water nozzle installation

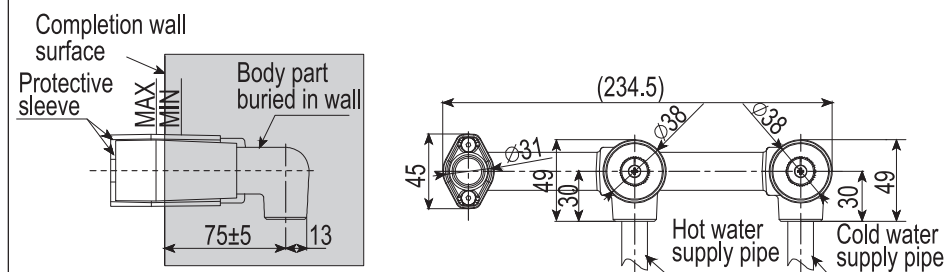
## Double handle series water nozzle (Take DLB201-3R as an example)



## DLB202 series water nozzle



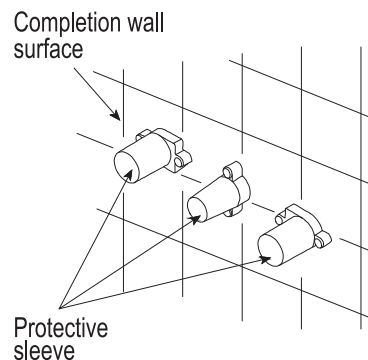
## DLB203 series water nozzle



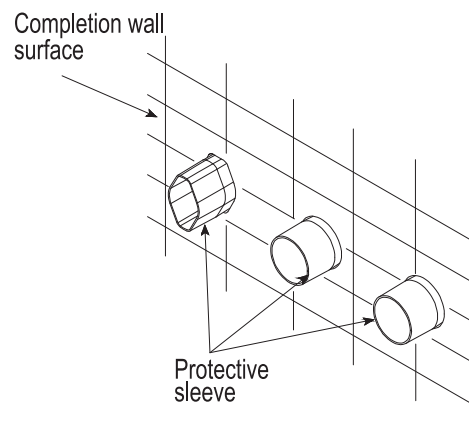
# Water nozzle installation

## ⚠ Attention:

- When installing the body buried in wall, do not remove the protective sleeve.
- In installation, please note the burial depth of the body buried in wall. Please ensure the completion wall surface to be between the markings MIN-MAX on the protective sleeve.
- Connect the water inlet pipe and the body buried in wall and confirm that no water leaks from different connecting locations. Then add cement filling.



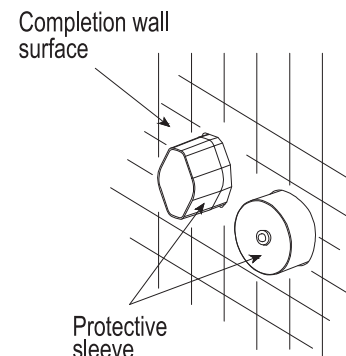
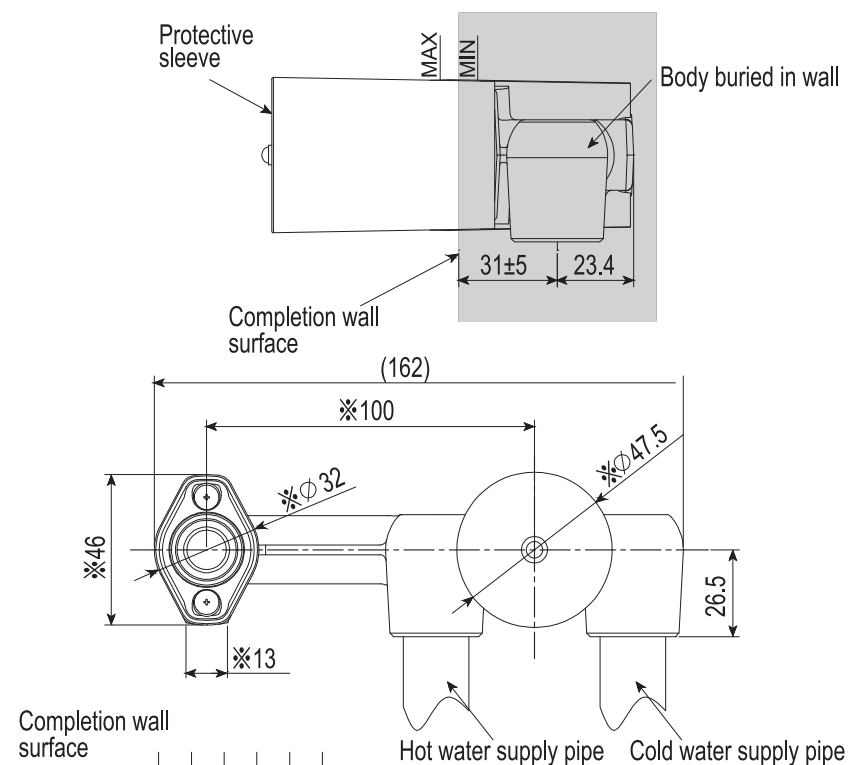
DLB202 series water nozzle.



DLB203 series water nozzle

# Water nozzle installation

## DLB309 series water nozzle



⚠ Attention: When completing hole-cutting on the wall surface (ceramic tile), be sure to cut holes by referring to the dimensions as shown under “※” on the protective sleeve in the figure. Otherwise, a problem may occur in water nozzle installation.

# Water nozzle installation

## 3.Installation of decorative plate,handle and water outlet pipe

### a.Single hand series water nozzle

#### ⚠ Attention:In case of DLB308:

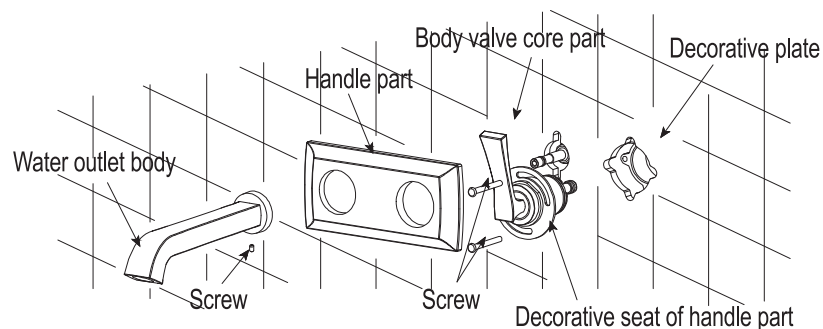
- ① Remove the protective cover.
- ② Install the two water inlet receiving hands of the handle part in by directing at the body valve core and use screws to fasten the handle part onto the body until a distance of 2mm is ensured between the end face of the decorative seat of the handle part and wall surface.
- ③ Open the handle and put the decorative plate in the handle part and fix on the decorative seat of the handle part.
- ④ Finally,install the water outlet body and tighten by using screws.

#### ⚠ Attention:(1)Be sure to direct the two water inlet receiving hands of the handle part at the two water inlet holes in the body valve core part.

(2)In installation,the handle faces up.

(3)To facilitate installation,apply a small amount of soap water on the two O-rings in the decorative plate for lubrication in installation.

(4)In the process of installing the decorative plate,take care not to scratch the body.

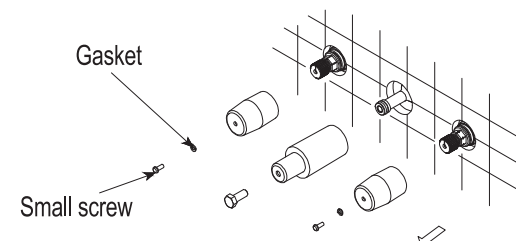


# Water nozzle installation

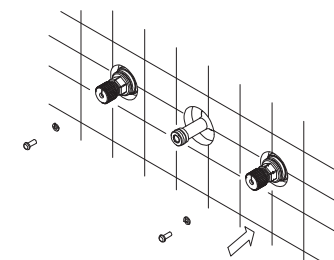
## b.Double handle series water nozzle

### ⚠ Attention In case of DLB202 series water nozzle

\*Remove the protective sleeve and keep the small screws and gaskets for future use.(⚠ Attention:After installation,the protective sleeve will have no use any more)

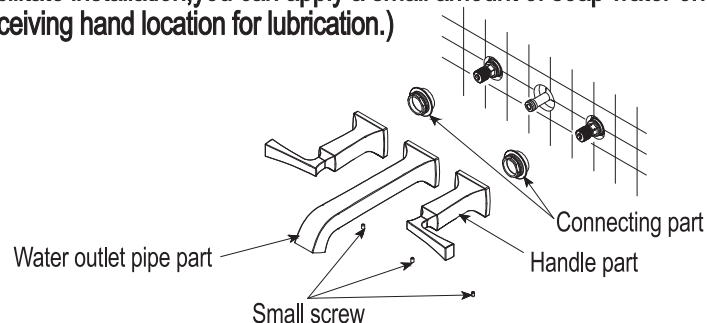


\*Screw the small screws and gaskets in the valve cores on both sides.



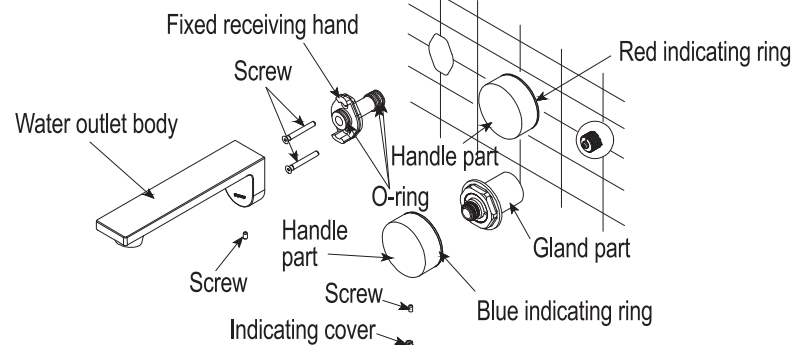
# Water nozzle installation

③Screw the connecting sleeves onto the valve cores on both sides respectively and fit closely with the wall. Insert the spline of the handle part in the valve core and screw in the small screws for fastening. (⚠ **Attentions: The handle lever is placed transversely toward the outer side.**) Insert the water outlet part by aligning with the receiving hand in the wall. Screw in the small screws to fasten the water outlet pipe part. (⚠ **Attentions: To facilitate installation, you can apply a small amount of soap water on the O-ring at the receiving hand location for lubrication.**)



## ⚠ **Attentions: In case of DLB203, DLB204 series water nozzle**

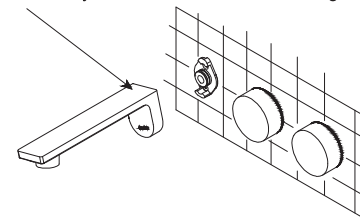
- ① Remove the protective sleeve and keep the screws on the protective sleeve of the water outlet body. (⚠ **Attentions: After installation, the protective sleeve will have no use any more**)
- ② Screw the gland part of the handle in the body buried in wall. Use a wrench to fasten onto the wall surface.
- ③ Put the handle part on the spline receiving hand of the gland part and then use small screws to fasten. Finally, put the indicating cover on the handle part. (⚠ **Attentions: The red and blue indicating rings have been put in the handle**)
- ④ Insert the receiving hand part of the water outlet body in the body buried in wall and put on the wall surface. Use two screws to fasten.



# Water nozzle installation

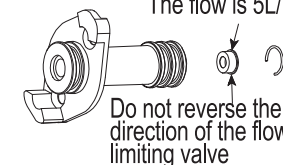
⑤As shown in Fig.2, insert with force the water outlet body onto the fixed receiving hand part at around 15 degrees. Then rotate the body to the horizontal condition. Ensure that the jaw at rear end of the water outlet body has clipped into the fixed receiving hand. Then use small screws to fasten the body. (⚠ **Attentions: In installation, do not cause any scratch to the O-ring. To facilitate installation, you can apply a small amount of soap water on the O-ring for lubrication**)

The water outlet body inclined for around 15 degrees



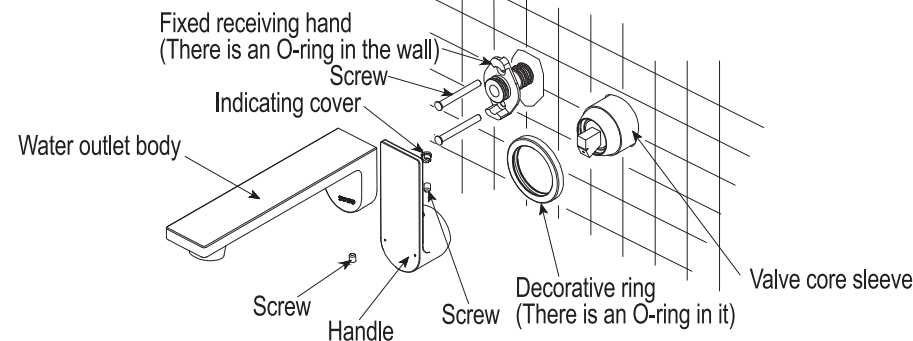
DLB204series  
⚠ **Attentions: Customers can determine themselves if the flow-limiting ring and snap ring need to be installed according to the water pressure and flow**

The flow is 5L/min



## ⚠ **Attentions: In case of DLB309 series water nozzle**

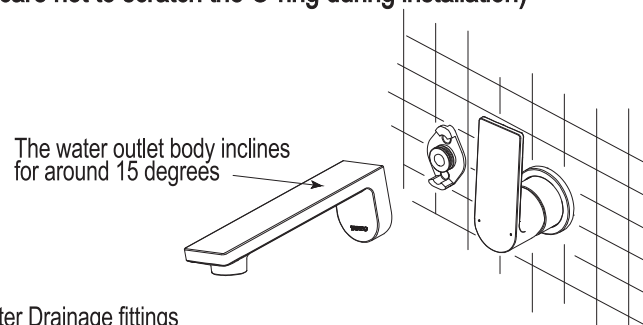
- ① Remove the protective sleeve and keep the screws on the protective sleeve of the water outlet body. (⚠ **Attentions: After installation, the protective sleeve will have no use any more**)
- ② Put the decorative ring on the valve core sleeve, Just fit closely with the wall surface. (⚠ **Attentions: To facilitate installation, you can apply a small amount of soap water on the O-ring in the decorative ring for lubrication; the smooth surface of the two decorative ring surfaces faces the outer side**)
- ③ Install the handle on the valve core (⚠ **Attentions: note that the handle lever faces up**). Use screws to fasten. Then install the indicating cover.
- ④ Insert the fixed receiving hand in the body buried in wall and put on the wall surface. Use two screws to fasten.



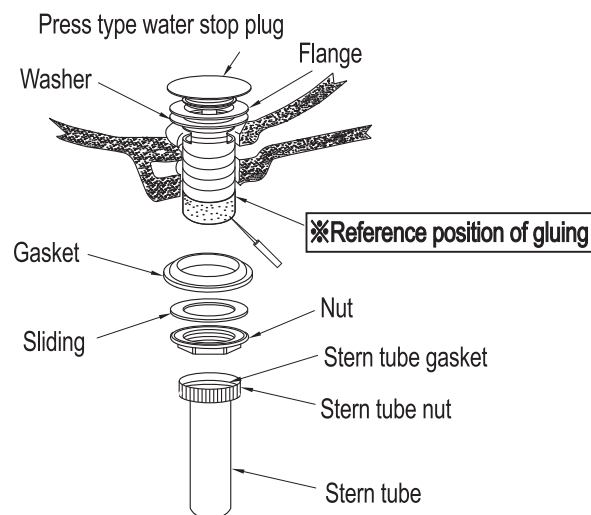


# Water nozzle installation

⑤As shown in the figure,incline the water nozzle body for 15 degrees and insert with force onto the fixed receiving hand.Then slew the body to a perpendicular condition. Ensure that the jaw at the rear end of the water outlet body clips into the fixed receiving hand.Then use small screws to fasten the body.( **△ Attentions:**To facilitate installation,you can apply a small amount of soap water on the fixed receiving hand for lubrication;take care not to scratch the O-ring during installation)



## 4.Installation of water Drainage fittings



As shown in the figure, put the flange and sealing ring into the installation hole of the water basin , evenly apply an Appropriate amount of DURABLE ANTI-FUNGI SILICONE SEALANT around the thread part in contact with the gasket,install the gasket, sliding gasket and nut on the thread of flange, then tighten the nut to ensure that the water drainage and the water basin are fully fastened, finally tighten the stern tube nut and fix the stern tube on the flange.

※Tighten the nut when tightening it. Do not use force to avoid water basin ceramic damage.

# Manufacturer and vendor

Applicable standard:GB 18145-2014、 GB 25501-2019

Product Model No.:See the label on the packing box

Product name:See the label on the packing box

Production date:See the label on the packing box

Assembly factory:TOTO(Dalian)Co.,Ltd.

Telephone:(0411)87624383

Factory address:17 Dong Bei Second Street,Economic&Technical Development Zone,Dalian

TOTO(China)Co.,Ltd.

After-sale service toll free telephone all over the country:

800-820-9787(fixed telephone)

400-820-9787(for mobile phone users)

Vendor:TOTO(China)Co.,Ltd.

Address:Room 1915,North Building of Beijing Jiali Center,No.1,

Guanghua Road,Chaoyang District,Beijing

Website:www.toto.com.cn