

# 施工说明书 Instructions for construction

安装产品前请仔细阅读本施工说明书，并保留备用。  
Before product installation, read these instructions for construction carefully and retain it for future reference.

# TOTO

# TOTO

OG3861YIAI  
2018.03

# 目录

## 目 录

目录 .....	1
明细单 .....	2-3
使用条件与施工上的注意 .....	4
施工上的注意与保养 .....	5
组合安装完成图 .....	6-9
安装完成图 .....	10-13
水嘴的安装 .....	14-20
生产厂家与销售商 .....	21

# 明细单

## 明细单

手柄部 .....	1套
捏手部 .....	1套
套 筒 .....	1个
装饰板 .....	1套
装饰盖 .....	1个
使用说明书 .....	1本
施工说明书 .....	1本

使用此明细单的产品包括：  
DP348 铜合金壁式单柄双控暗装水嘴面板  
DP352 铜合金壁式单柄双控暗装水嘴面板  
DP352场合无装饰盖

主体部 .....	1套
使用说明书 .....	1本
施工说明书 .....	1本

使用此明细单的产品包括：  
DV309-3R 铜合金壁式单柄双控暗装水嘴阀体(可转换)  
DV309S 铜合金壁式单柄双控暗装水嘴阀体(可转换)

# 明细单

明细单	
手柄部 .....	1套
装饰板 .....	1套
装饰盖 .....	1个
螺 钉 .....	4个
使用说明书 .....	1本
施工说明书 .....	1本
使用此明细单的产品包括： DP349 铜合金壁式单柄双控暗装水嘴面板 DP353 铜合金壁式单柄双控暗装水嘴面板 DP353场合无装饰盖, 螺钉2个。	
主体部 .....	1套
使用说明书 .....	1本
施工说明书 .....	1本
使用此明细单的产品包括： DV311-2R 铜合金壁式单柄双控暗装水嘴阀体 DV311-3 铜合金壁式单柄双控暗装水嘴阀体	

# 使用条件与施工上的注意

使 用 条 件
1. 供冷水*热水压力： 最低压力.....0. 05MPa(流动压) 最高压力.....1. 0MPa(静压)
2. 花洒配套使用时，建议水压0. 2MPa(流动压)以上，否则可能无法充分发挥花洒的性能。
3. 供水温度在4℃~90℃，建议使用温度60±5℃, 供热水请勿使用蒸汽。
4. 使用环境温度0℃以上。如果低于0℃，水嘴会出现变形、冻裂等现象。
5. 为防止花洒内部损坏，花洒侧吐水温度不得超过60℃，建议使用温度45℃以下。
6. 长时间不使用时，可能导致水嘴内部及外部锈蚀不能使用等现象。
7. 如果您需要废弃本产品，请勿将其作为一般生活垃圾处理，请依照法规经由独立的回收体系进行合适的处理、恢复和回收。
8. 本说明书中的产品具有清洗功能。
施 工 上 的 注 意
⚠警告 表示如果无视此标志而误操作时，有可能造成人员重伤或死亡。
⚠注意 表示如果无视此标志而误操作时，有可能造成人身伤害或财产损失。
⚠警告
1. 水嘴的供热水一侧处于高温状态，请注意勿使皮肤直接接触五金配件表面，否则可能会烫伤。
2. 请勿配反冷*热水配管，否则可能会烫伤。
3. 供热水请勿使用蒸汽，否则可能会烫伤。
4. 施工时本产品的G1/2或G3/4内螺纹请勿与R1/2或R3/4接头安装使用，否则可能会造成主体螺纹处开裂、漏水等不良。

# 施工上的注意与保养

## ⚠ 注意

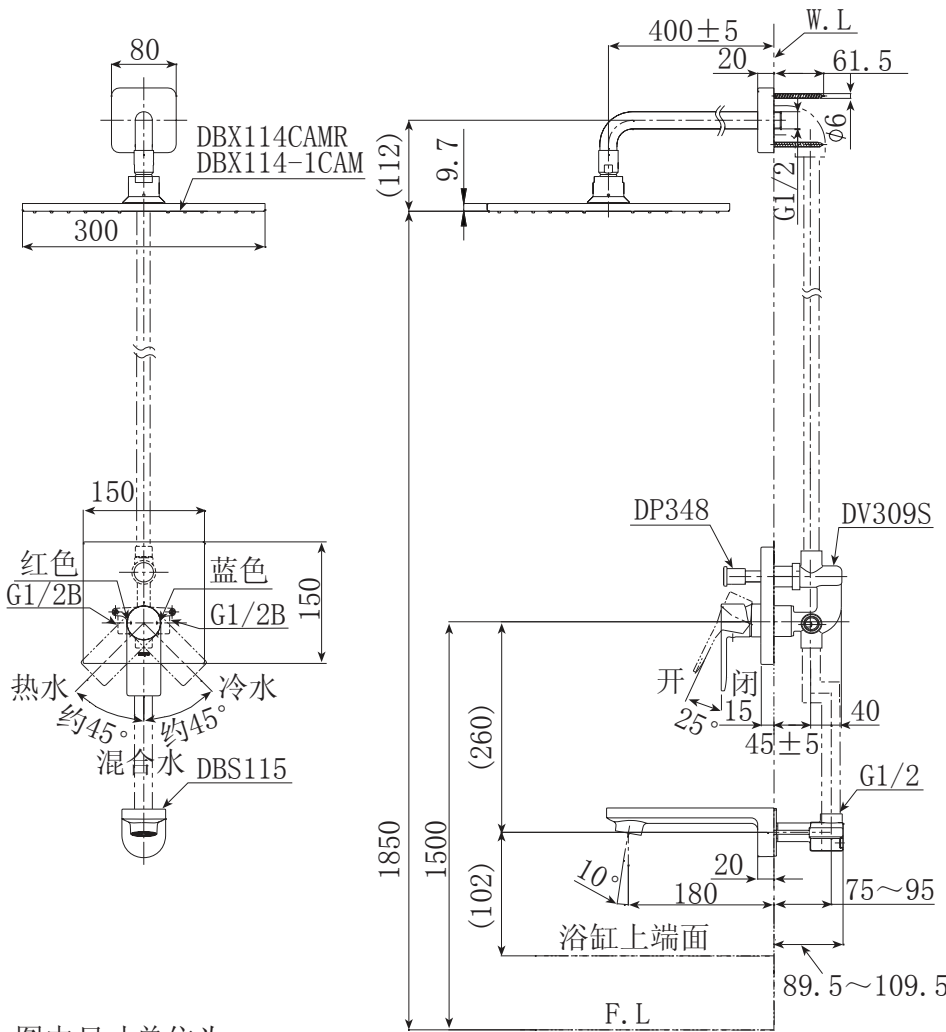
- 1. 由于陶瓷阀芯是较精密的部件，请勿擅自分解，否则可能会造成漏水等不良。
- 2. 请勿撞击本产品，否则可能会造成故障、漏水。
- 3. 必须使用中性洗涤剂清洗，中性以外的洗涤剂会破坏镀层或使表面变色。
- 4. 不得使用酸性洗涤剂和去污粉、抛光粉等含粗颗粒的洗涤剂和尼龙刷，否则可能会破坏镀层等。
- 5. 可使用软布擦拭，间或用机油或车用蜡浸布擦拭，但请勿接触树脂部件，否则可能失去光泽和产生锈蚀。
- 6. 建议不要长时间不使用，否则可能会导致水嘴内部以及外部锈蚀不能使用等现象。
- 7. 随着产品式样的不断更新，实物存在与图示不符的情况，但基本安装、使用原理相同。

## 保养

- 为长期保持产品的美观，请用户按以下方法维护保养。
- 1. 经常用软布擦拭，间或用软布蘸水擦拭。
  - 2. 当有污垢且比较明显时，请用中性洗涤剂擦拭后充分进行水洗。

# 组合安装完成图

DP348与DV309S系列水嘴与东陶其他产品配合示意图

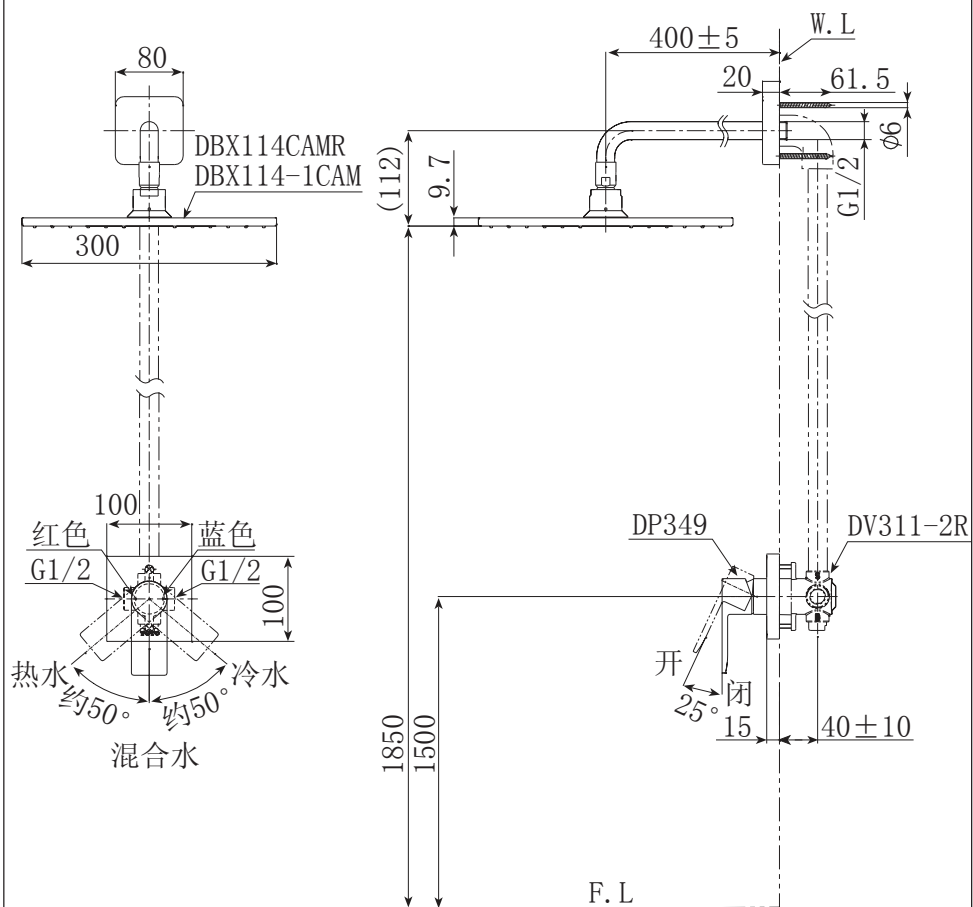


图中尺寸单位为mm  
※ () 内尺寸为推荐安装尺寸。



## 组合安装完成图

DP349与DV311-2R系列水嘴与东陶其他产品配合示意图

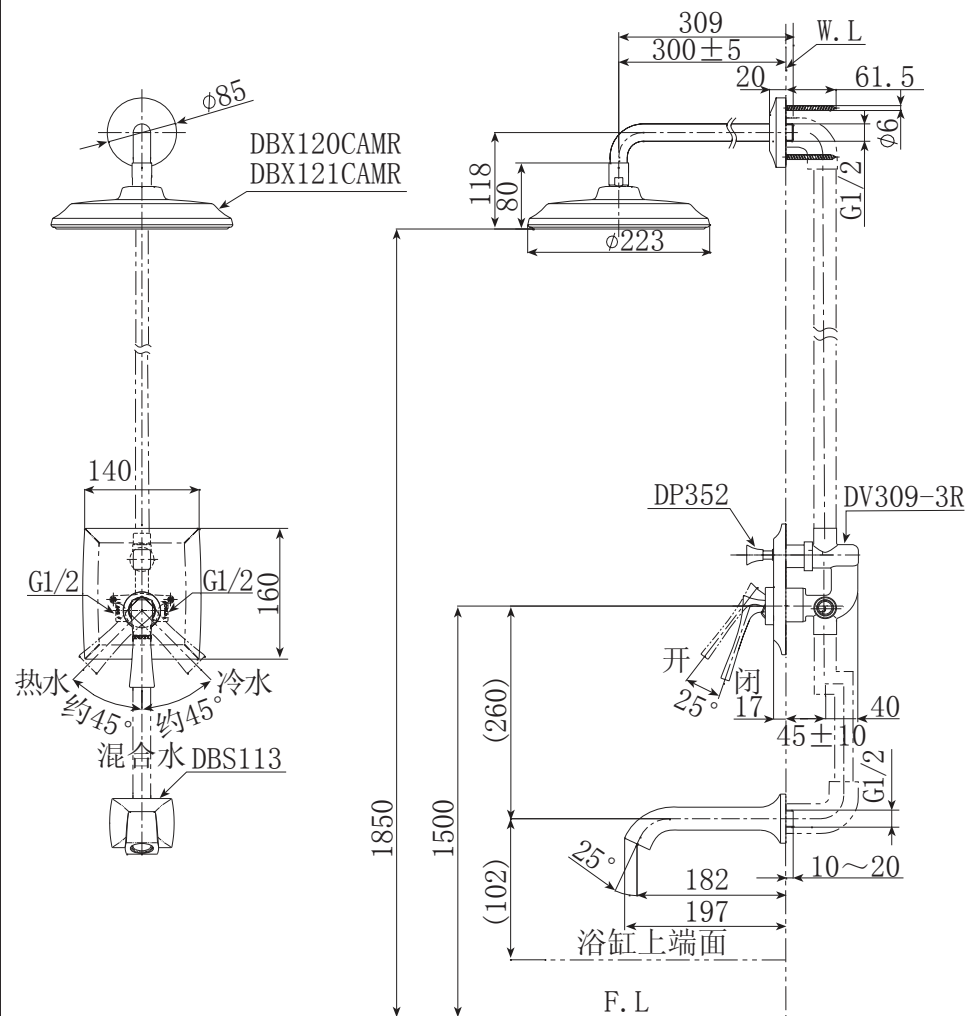


图中尺寸单位为mm

※()内尺寸为推荐安装尺寸。

## 组合安装完成图

DP352与DV309-3R系列水嘴与东陶其他产品配合示意图

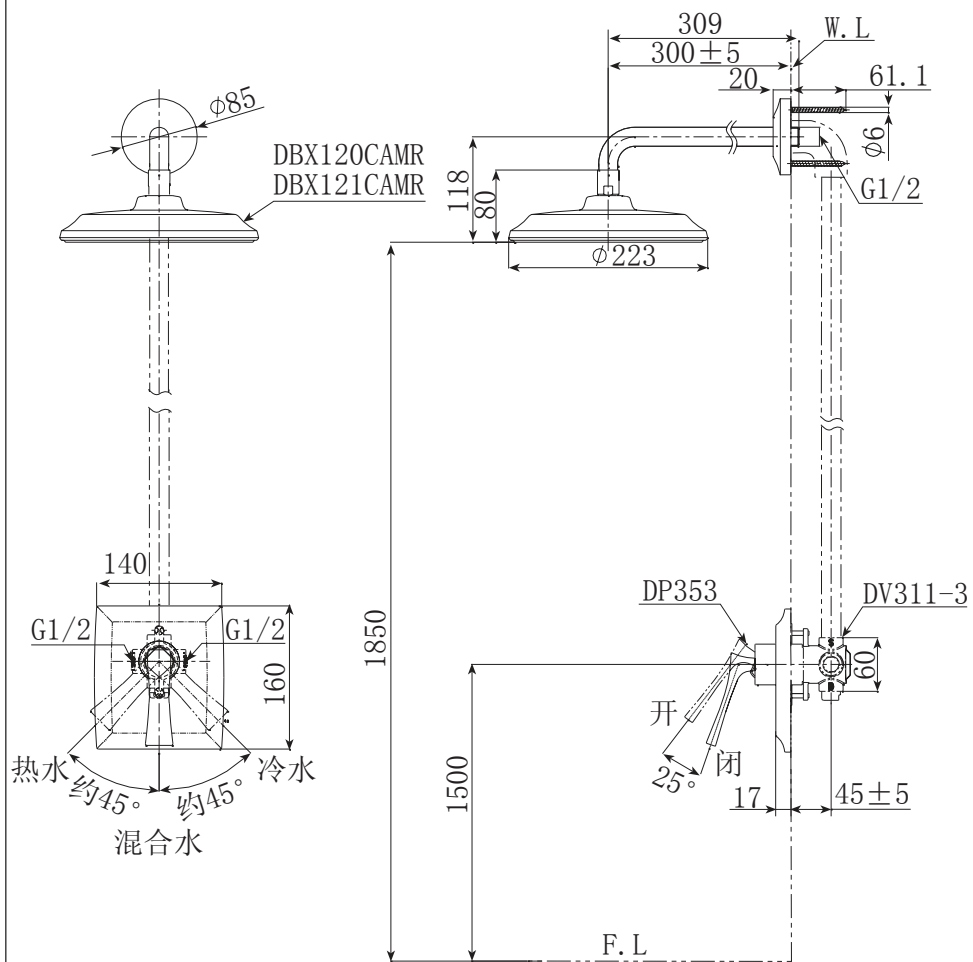


图中尺寸单位为mm

※()内尺寸为推荐安装尺寸。

## 组合安装完成图

DP353与DV311-3系列水嘴与东陶其他产品配合示意图



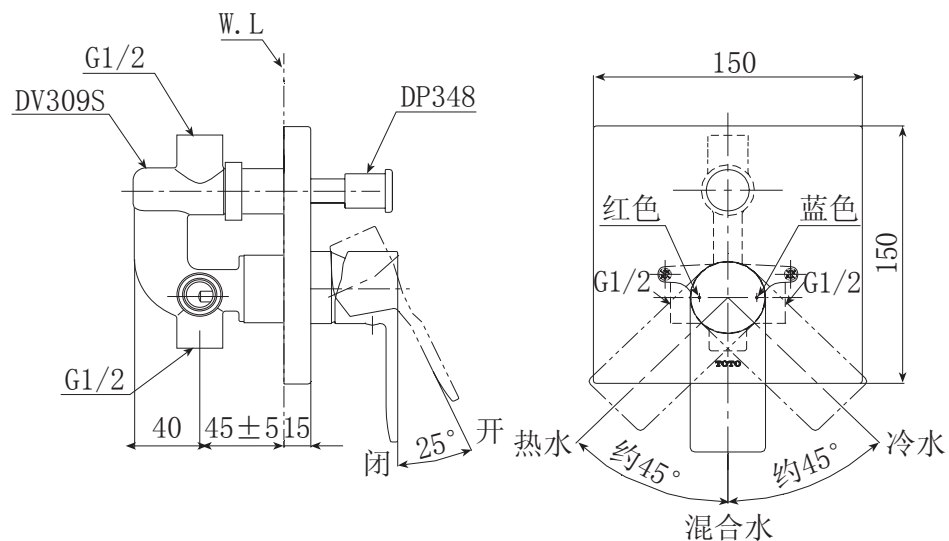
图中尺寸单位为mm

※()内尺寸为推荐安装尺寸。

## 安装完成图

DP348 铜合金壁式单柄双控暗装水嘴面板

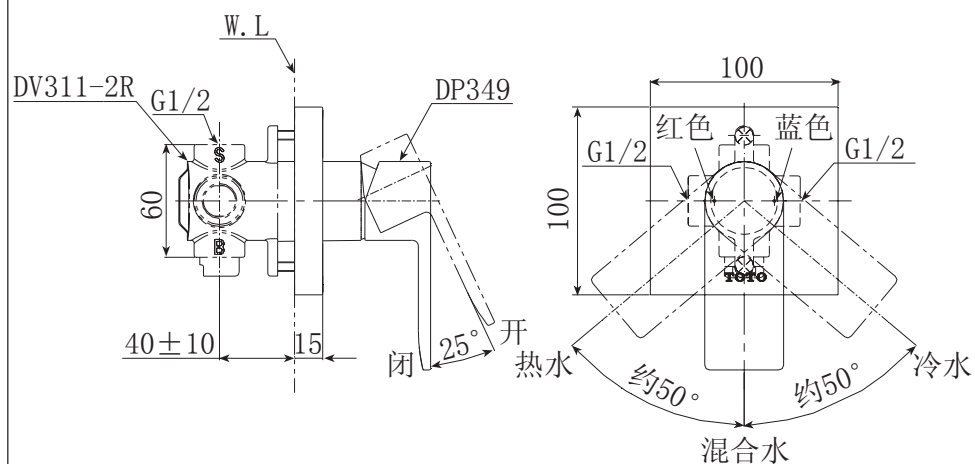
DV309S 铜合金壁式单柄双控暗装水嘴阀体(可转换)



注： 上記尺寸单位为mm

# 安装完成图

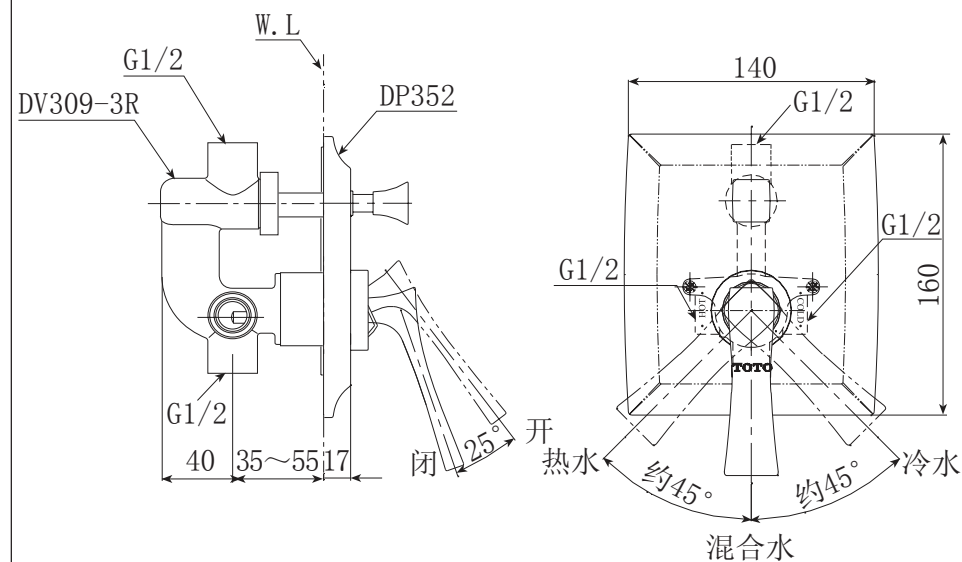
DP349 铜合金壁式单柄双控暗装水嘴面板  
DV311-2R 铜合金壁式单柄双控暗装水嘴阀体



注：上記尺寸单位为mm

# 安装完成图

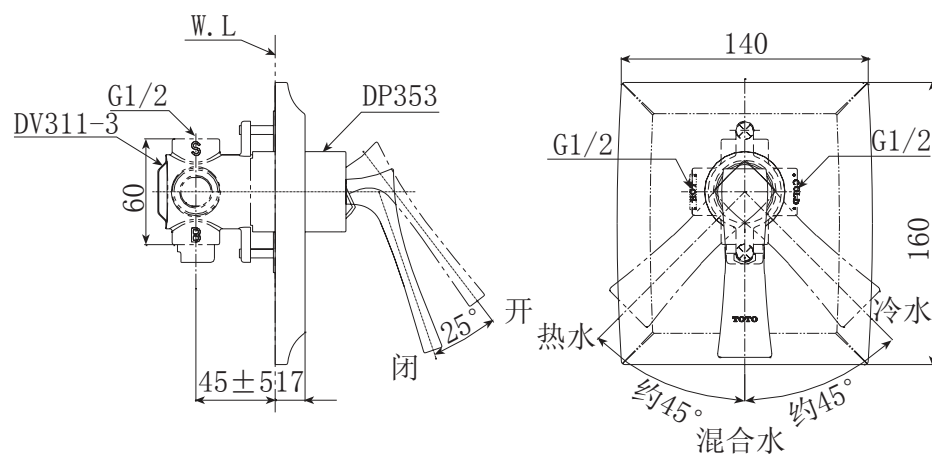
DP352 铜合金壁式单柄双控暗装水嘴面板  
DV309-3R 铜合金壁式单柄双控暗装水嘴阀体(可转换)



注：上記尺寸单位为mm

# 安装完成图

DP353 铜合金壁式单柄双控暗装水嘴面板  
DV311-3 铜合金壁式单柄双控暗装水嘴阀体



注：上記尺寸单位为mm

# 水嘴的安装

安装前的准备：DV309S、DV309-3R

## 1. 供水管内的清扫

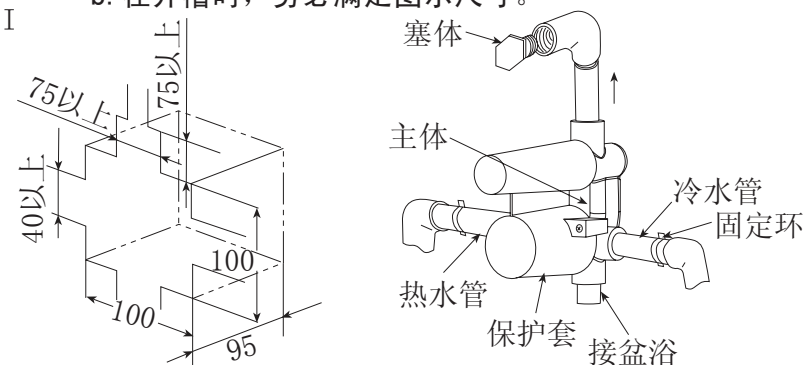
安装之前，一定要冲净供水管内的灰尘、砂砾等异物；安装过程中也应充分注意勿使泥沙等杂质进入水嘴或供水管内部。

## 2. 水嘴主体的安装

①如图I所示，事先把水嘴主体和相应的管子连接好，然后比照产品的开头在墙面开槽。

⚠注意：a. 在水嘴安装前，务必试水，以防漏水等不良。  
b. 在开槽时，务必满足图示尺寸。

图I

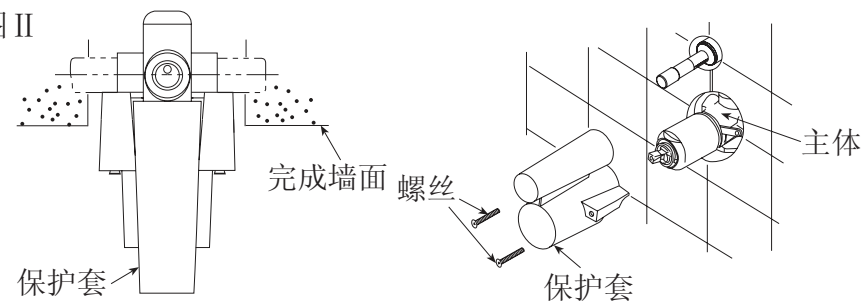


单位：mm

②如图II所示，用水泥等填料将产品安装在墙内。

⚠注意：a. 露出墙外的部分不得沾上水泥等建筑材料。  
b. 安装时产品应与墙面保持垂直。

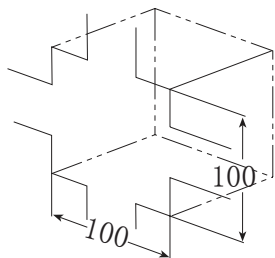
图II



⚠注意：带有保护套的水嘴，拆下保护套松开螺丝，把保护套拉出。（安装完后保护套将不再起作用。）

# 水嘴的安装

安装前的准备：DV311-2R、DV311-3  
参考完成图在埋入墙部位凿开。



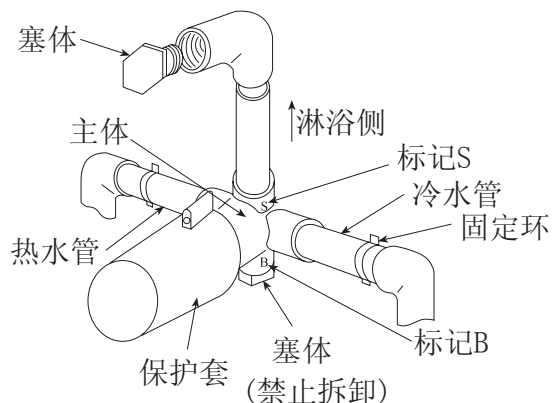
单位：mm

## 1. 供水管内的清扫。

安装之前，一定要冲净供水管内的灰尘、砂砾等异物；安装过程中也应充分注意勿使泥沙等杂质进入水嘴或供水管内部。

## 2. 水嘴与配管的连接。

将主体上的标记S侧与淋浴侧配管。



# 水嘴的安装

## 3. 主体的安装

连接冷、热水管，并用固定环固定。

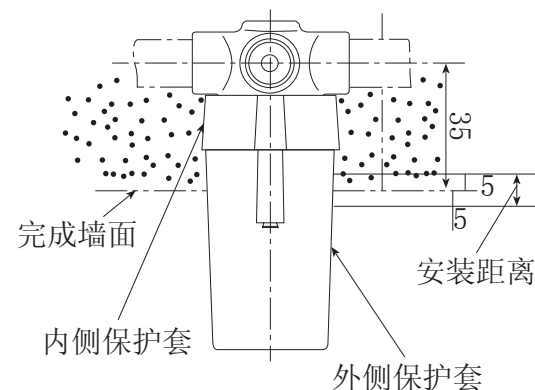
## 4. 漏水的检查

将埋入墙内的连接管部通水，进行漏水检查。

## 5. 填埋

用灰浆填埋。（⚠ 注意：内侧保护套不用拆套，不要使灰浆进入保护套内侧及螺丝孔内）。

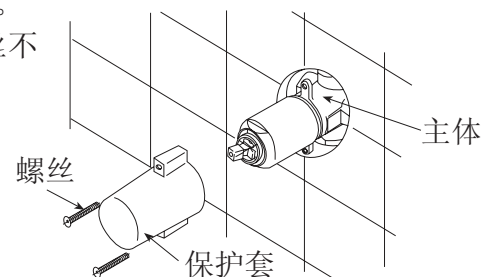
## 6. 按右图所示进行墙面修整。



## 7. 拆下保护套

松开螺丝，把外侧保护套拉出。

（安装完后外侧保护套、螺丝不再安装）



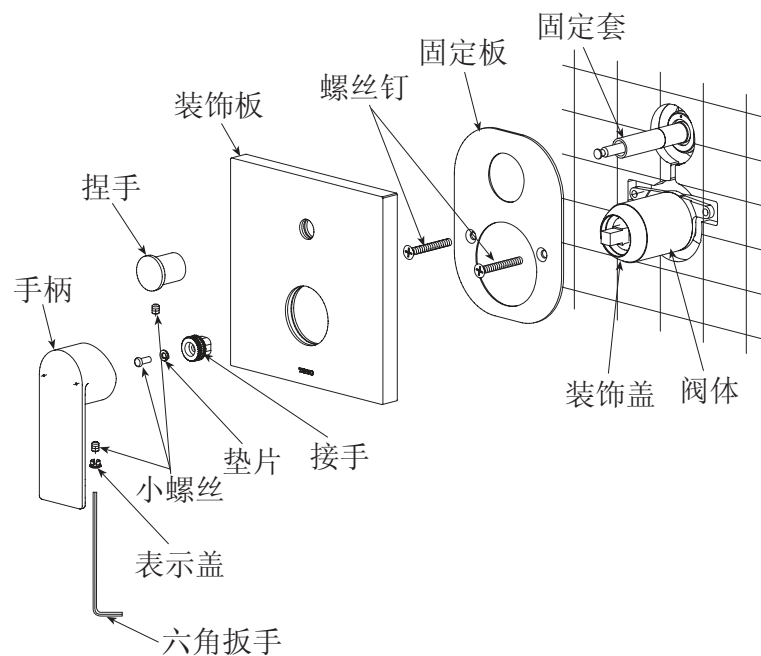
# 水嘴的安装

## 装饰板与手柄部安装(一)

DP348与DV309S水嘴

如图所示，将固定板装到阀体上，然后用在保护套上拆下的螺丝钉将固定板固定在墙上，装上固定套和装饰盖，再将装饰板装到阀体上，然后将手柄部装到阀芯上，将捏手装到切替心轴上，并用小螺丝固定。最后将表示盖装到手柄上。

- ⚠注意：**
- a. 各个零件的位置。
  - b. 拧紧小螺丝。
  - c. 扣紧装饰板，以防松动。
  - d. 不要装反手柄的方向(红色表示热水侧，蓝色表示冷水侧)。
  - e. 捏手与切替心轴配合时，将捏手插到最深处，再将小螺丝拧紧。

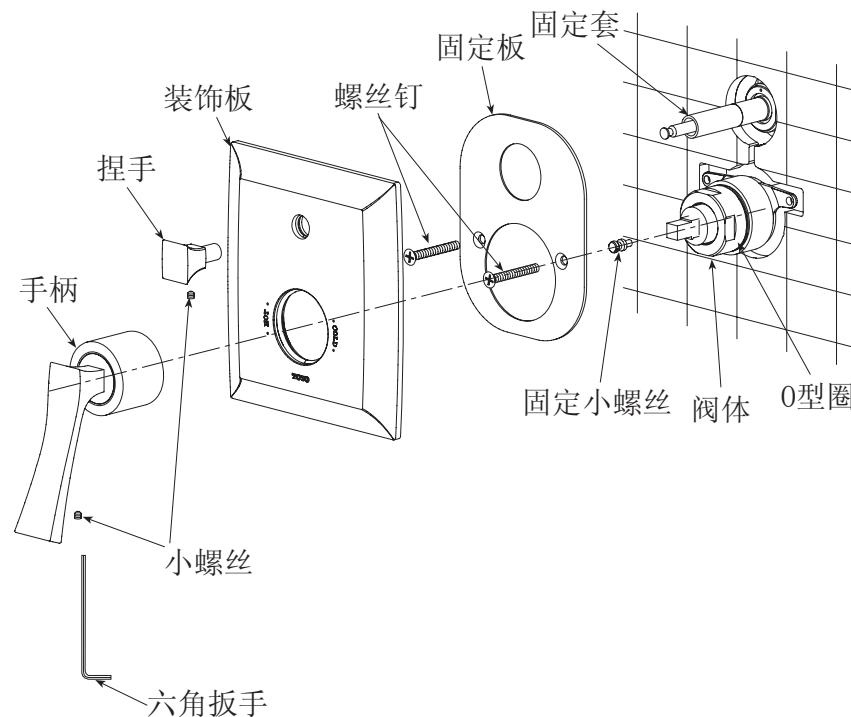


# 水嘴的安装

## 装饰板与手柄部安装(二)

DP352与DV309-3R水嘴

先将固定套和固定小螺丝紧固到阀体上，用在保护套上拆下的螺丝钉，将固定板固定在主体上。装上装饰板，将手柄部内部方形孔对准阀体前端方形凸起部按入，通过阀体部O型圈与手柄部固定，并用螺钉将手柄固定。将切替手柄装入切替阀部并用螺钉固定。(手柄部与阀体O型圈固定时若无法一次性将手柄部完全按入，请先将装饰板适当向外拉出，将手柄部与O型圈部完全固定后再将装饰板推至与墙面贴合。)



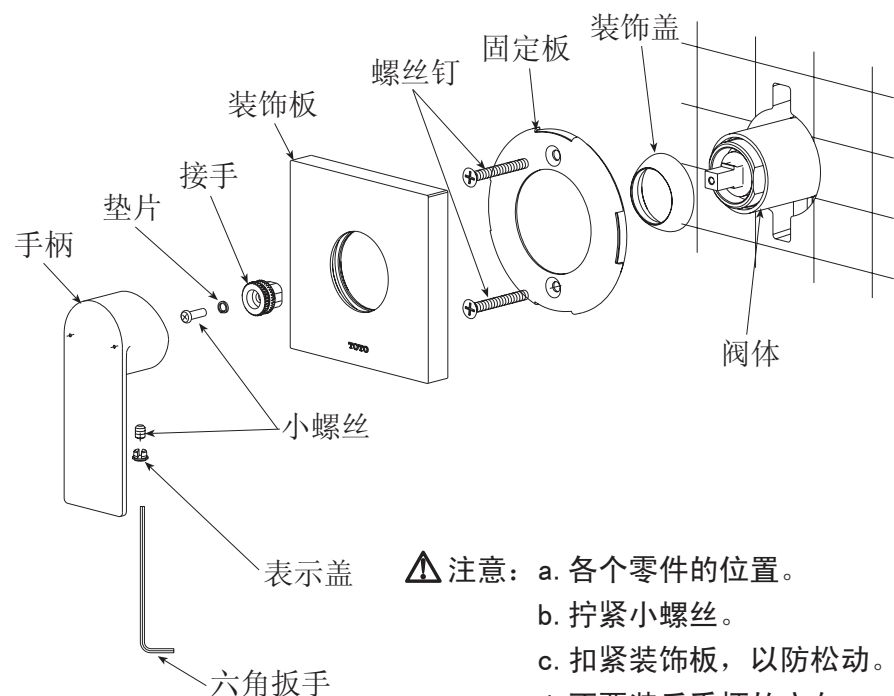


# 水嘴的安装

## 装饰板与手柄部安装(三)

DP349与DV311-2R水嘴

先用固定螺丝将固定板固定在阀体上，再装上装饰盖、装饰板、(装饰板要安全压紧在墙壁上)，然后用小螺钉将手柄和花键接手固定在阀芯上，最后将表示盖装到手柄上。



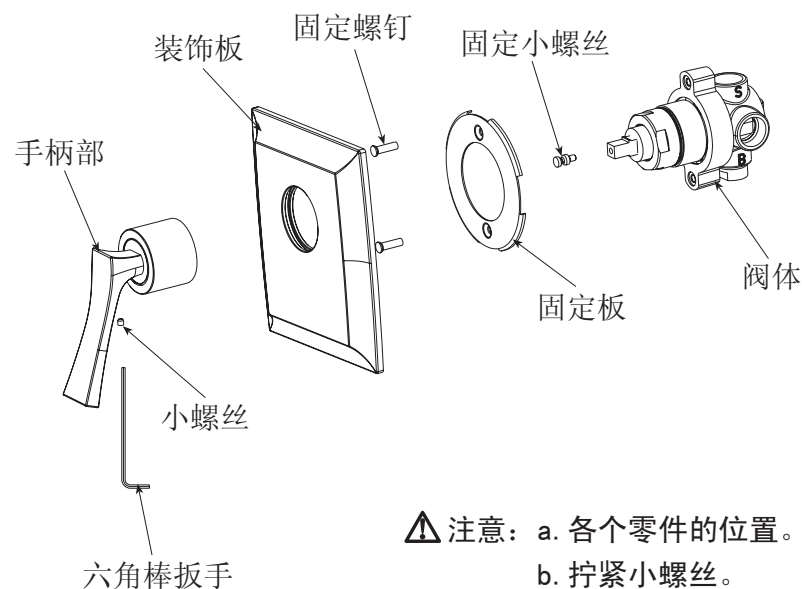
- ⚠ 注意：a. 各个零件的位置。  
b. 拧紧小螺丝。  
c. 扣紧装饰板，以防松动。  
d. 不要装反手柄的方向。  
e. 当墙面主装距离为50~60mm时，请使用2个长款固定螺钉。

# 水嘴的安装

## 装饰板与手柄部安装(四)

DP353与DV311-3水嘴

先用固定螺丝将固定板固定在阀体上，再将固定小螺丝装到阀芯上拧紧，然后将装饰板套在手柄部上，并将装好的手柄与装饰板一同装到阀体上(手柄部与阀体O型圈固定时若无法一次性将手柄部完全按入，请先将装饰板适当向外拉出，将手柄部与O型圈部完全固定后再将装饰板推至与墙面贴合。)最后将装好的手柄用小螺丝固定在阀体上。



- ⚠ 注意：a. 各个零件的位置。  
b. 拧紧小螺丝。  
c. 不要装反手柄的方向。

# 生产厂家与销售商

执行标准：GB 18145-2014

产品型号：见包装箱上的标签

产品名称：见包装箱上的标签

生产日期：见包装箱上的标签

组装工厂：东陶（大连）有限公司

电 话： (0411) 87624383

厂 址：大连经济技术开发区东北二街17号

东陶（中国）有限公司

全国售后服务电话：800-820-9787(固定电话)

400-820-9787(手机用户)

销售商：东陶（中国）有限公司

地 址：北京市朝阳区光华路1号 北京嘉里中心北楼1915室

网 址：www.toto.com.cn

# Contents

## Contents

Contents .....	1
Detailed list .....	2-3
Service condition and attentions in construction.....	4
Attentions in construction and maintenance .....	5
Combinational installation completion figure .....	6-9
Installation completion figure .....	10-13
Water nozzle installation.....	14-20
Manufacturer and vendor .....	21

# Detailed list

Detailed list	
Handle part .....	1 set
Handle knob part .....	1 set
Bushing .....	1 piece
Decorative plate .....	1 set
Decorative cover .....	1 piece
Instructions for construction .....	1 copy
Instructions for operation .....	1 copy
The products using this detailed list include: DP348 Copper alloy wall-mounted type single-handle double-control concealed water faucet panel DP352 Copper alloy wall-mounted type single-handle double-control concealed water faucet panel Note:In case of DP352,these is no decorative cover.	
Body .....	1 set
Instructions for construction .....	1 copy
Instructions for operation .....	1 copy
The products using this detailed list include: DV309-3R Copper alloy wall-mounted type single-handle double-control concealed faucet valve body(convertible) DV309S Copper alloy wall-mounted type single-handle double-control concealed faucet valve body(convertible)	

# Detailed list

Detailed list	
Handle part .....	1 set
Decorative plate .....	1 set
Decorative cover .....	1 piece
Screw .....	4 pieces
Instructions for construction .....	1 copy
Instructions for operation .....	1 copy
The products using this detailed list include: DP349 Copper alloy wall-mounted type single-handle double-control concealed water faucet panel DP353 Copper alloy wall-mounted type single-handle double-control concealed water faucet panel Note:In case of DP353,these is no decorative cover , screw 2 pieces.	
Body .....	1 set
Instructions for construction .....	1 copy
Instructions for operation .....	1 copy
The products using this detailed list include: DV311-2R Copper alloy wall-mounted type single-handle double-control concealed faucet valve body DV311-3 Copper alloy wall-mounted type single-handle double-control concealed faucet valve body	

## Service condition and attentions in construction

### Service condition

1. Cold water supply\*hot water supply pressure  
Minimum pressure ..... 0.05MPa (flow pressure)  
Maximum pressure ..... 1.0MPa (static pressure)
2. When the sprinkler is used as ancillary component,it is advised that the water pressure should be more than 0.2Mpa,otherwise,the performance of the sprinkler can not be played fully.
3. The temperature for water supply is 4~90°C. It is suggested to use the hot water temperature 60±5°C, Do not use steam to supply hot water.
4. The ambient temperature for use is above 0°C. If not, the water tap may deform and crack due to freezing.
5. To prevent internal sprinkler damage,the water outlet temperature on the sprinkler side shall not exceed 60°C.It is suggested to use a temperature below 45°C.
6. Being out of use for a long time may result in internal and external rust to the water nozzle and being unable to be used.
7. If you want to scrap this product, do not treat it as you do for general domestic grabage. Please follow relevant statutes to have it treated, recovered and collected appropriately by an independent recovery system.
8. The product in these instructions has a cleaning function.

### Attentions in construction



**Warning:**it means that ignoring this mark and misoperation may cause serious personal injury and death.



**Attention:** it means that ignoring this mark and misoperation may cause personal injury or property loss.

### Warning

- 1.The hot water supply side of the water nozzle is in a condition of high temperature. Do not allow skin to contact with the hardware surface directly.Otherwise,scalding may occur.
- 2.Do not reverse cold\*hot water pipes. Otherwise, scalding may occur.
- 3.Do not use steam to supply hot water. Otherwise, scalding may occur.
- 4.In construction, do not install and use the G1/2 or G3/4 internal threads of this product with R1/2 or R3/4 connector. Otherwise, the main body threads may crack, resulting in such quality problems as water leakage, etc.

## Attentions in construction and maintenance

### ⚠ Attentions

1. As the ceramic spool is a precise component, do not dismantle it without authorization. Otherwise, such poor conditions as water leakage, etc. may be caused.
2. Do not impact the product. Otherwise, failure, water leakage may occur.
3. It is imperative to use a neutral detergent in cleaning. Other detergents than a neutral one may damage the plating coat or make the surface discolor.
4. Do not use any such detergent as acidic detergent and abstergent, polishing powder, etc. Containing thick particles and nylon brush. Otherwise, the plating coat may be damaged, etc.
5. It is allowed to use a piece of soft cloth to wipe or use from time to time a piece of cloth immersed in machine oil or vehicle wax to wipe. However, do not contact with resin components. Otherwise, they may lose the gloss and become rusty.
- 6.It is suggested not to leave it unused for a long time.Otherwise,this may lead to internal and external rust to faucets to such a degree that it cannot be used any more,etc.
7. With the product design being updated constantly,the physical object may not coincide with the figure.However,the basic principle for installation,use is the same.

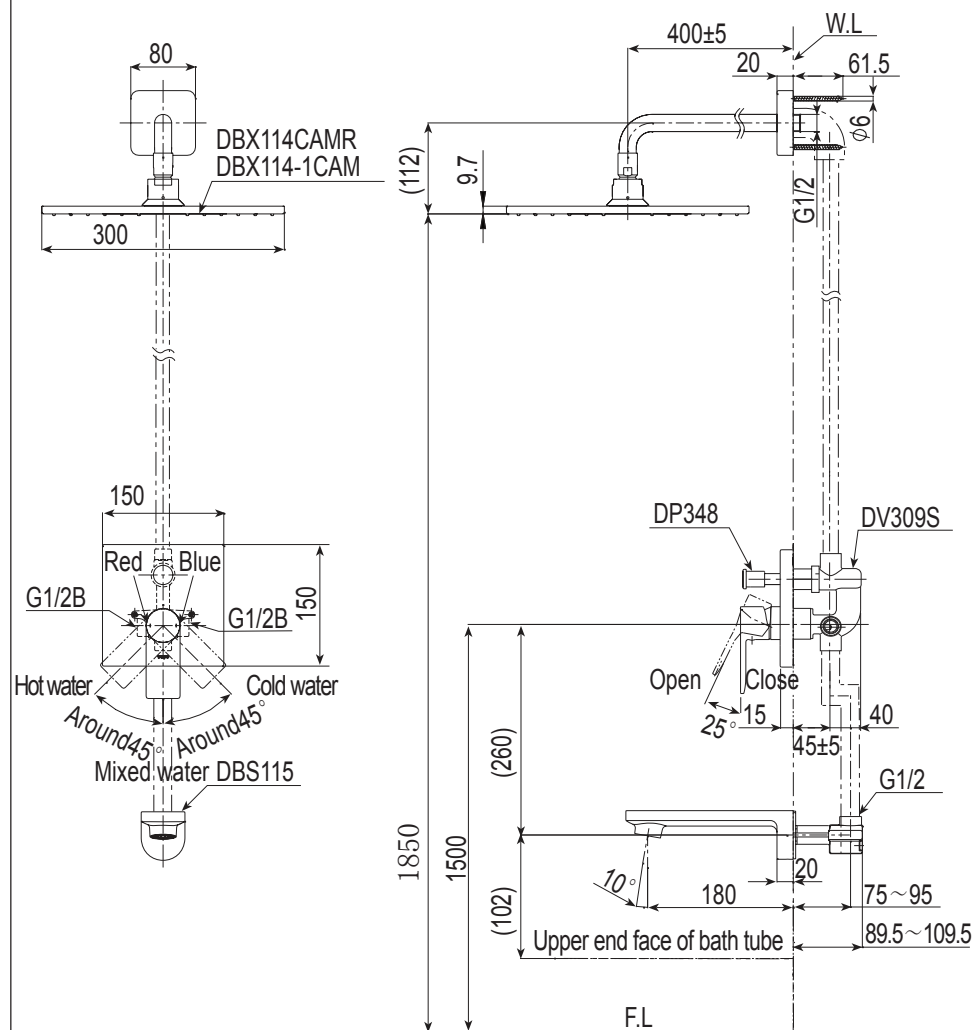
### Maintenance

To maintain a beautiful appearance of the product, the user is requested to conduct maintenance and care in the following method.

1. Wipe with a piece of soft cloth frequently and use a piece of soft cloth dipped in water to wipe from time to time.
2. When dirt exists obviously, please use water to wash sufficiently after wiping with a neutral detergent.

## Combinational installation completion figure

Schematic diagram for DP348 and DV309S series water nozzle working with other products of TOTO

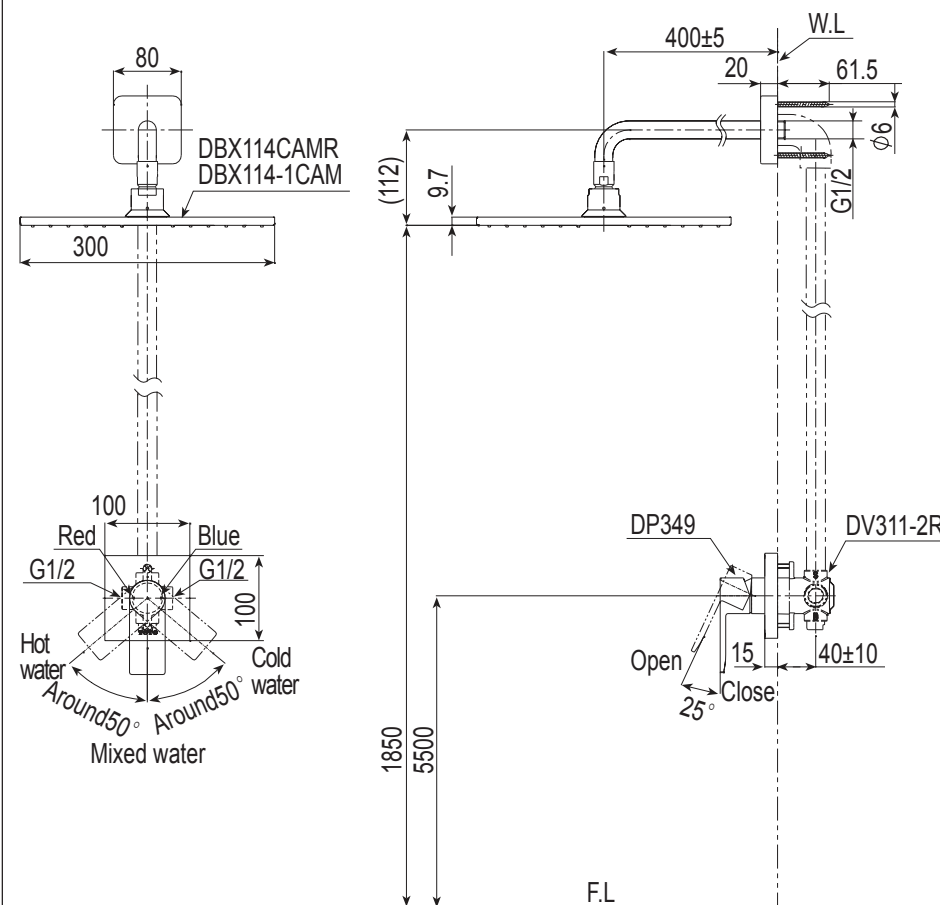


The dimensional unit in the above figure is mm.

※Note:What is contained in ( ) is suggested installation dimension

## Combinational installation completion figure

Schematic diagram for DP349 and DV311-2R series water nozzle working with other products of TOTO

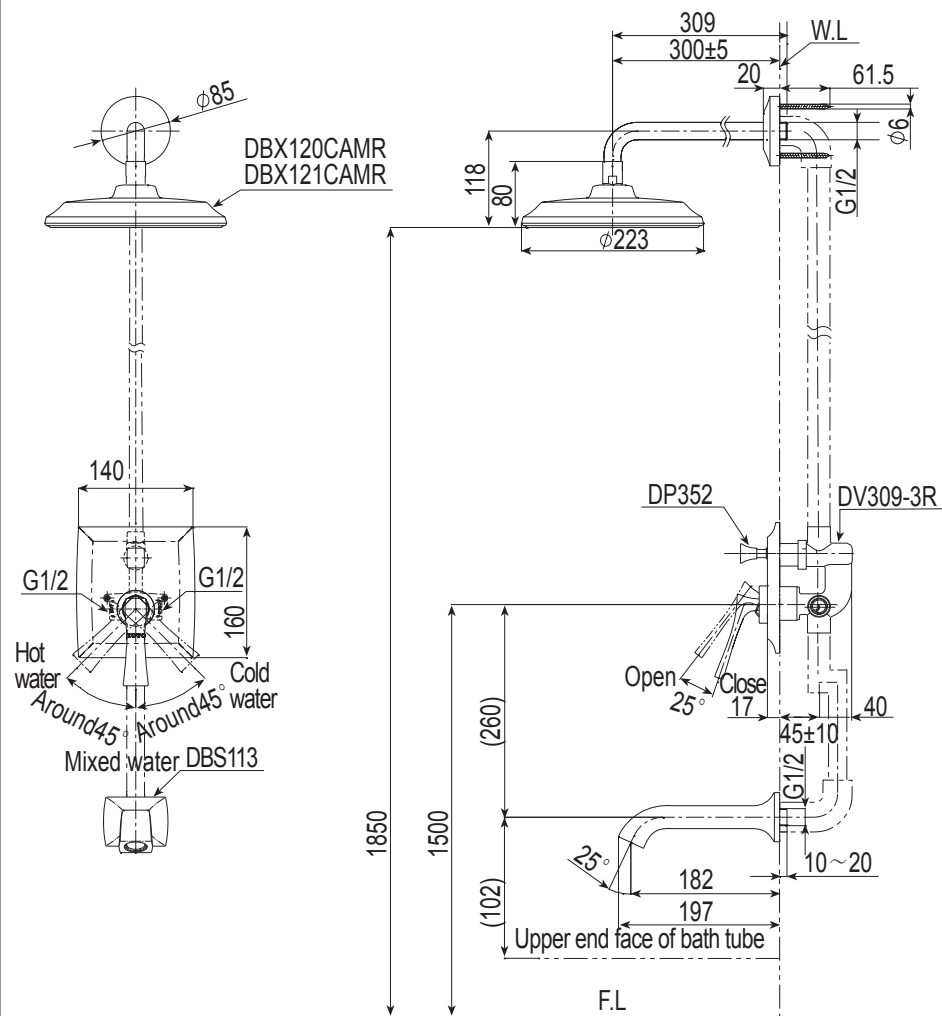


The dimensional unit in the above figure is mm.

※Note:What is contained in ( ) is suggested installation dimension

## Combinational installation completion figure

Schematic diagram for DP352 and DV309-3R series water nozzle working with other products of TOTO

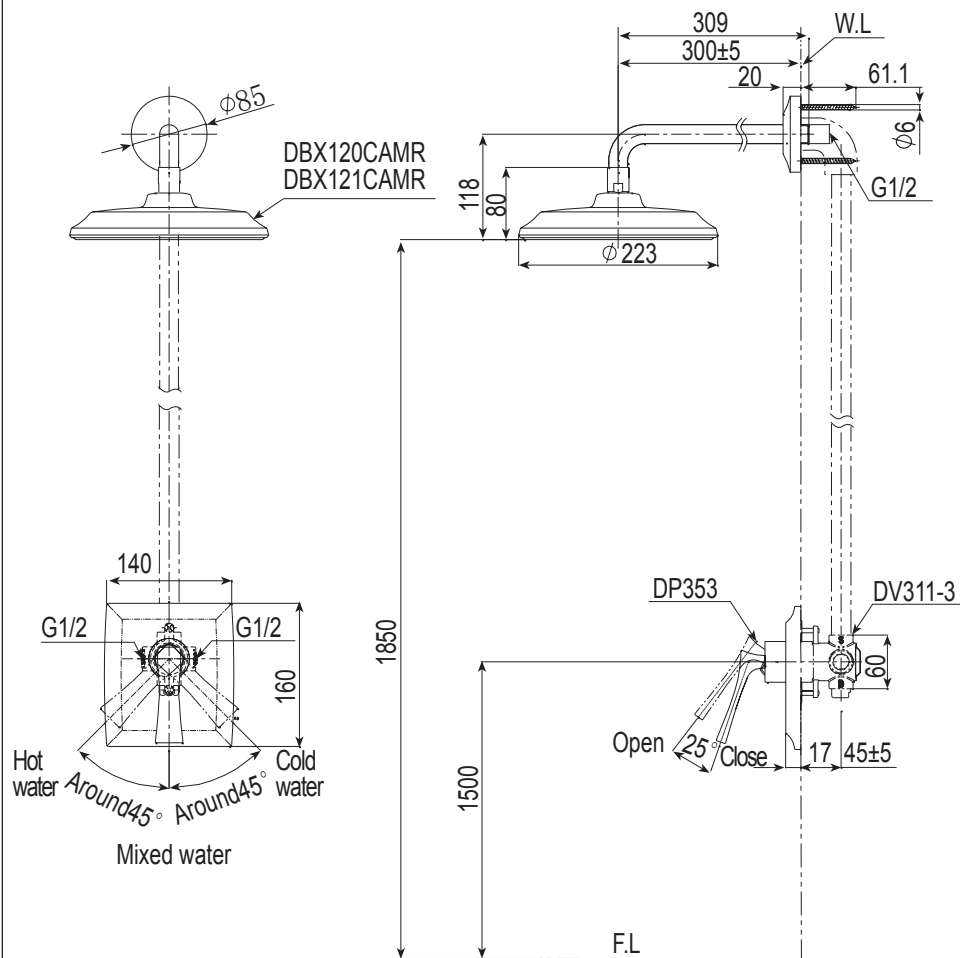


The dimensional unit in the above figure is mm.

※Note:What is contained in ( ) is suggested installation dimension

## Combinational installation completion figure

Schematic diagram for DP353 and DV311-3R series water nozzle working with other products of TOTO



The dimensional unit in the above figure is mm.

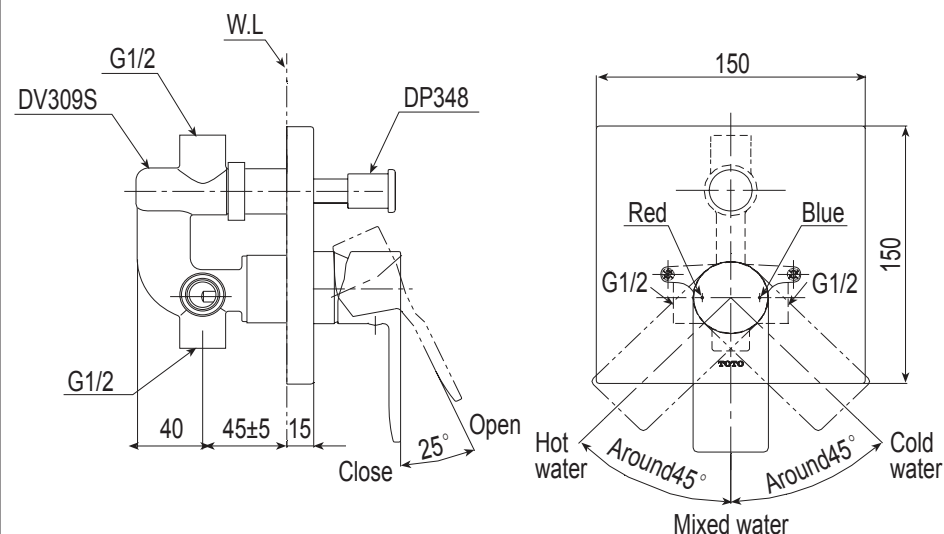
※Note:What is contained in ( ) is suggested installation dimension



## Installation completion figure

DP348 Copper alloy wall-mounted type single-handle double-control concealed water faucet panel

DV309S Copper alloy wall-mounted type single-handle double-control concealed faucet valve body(convertible)

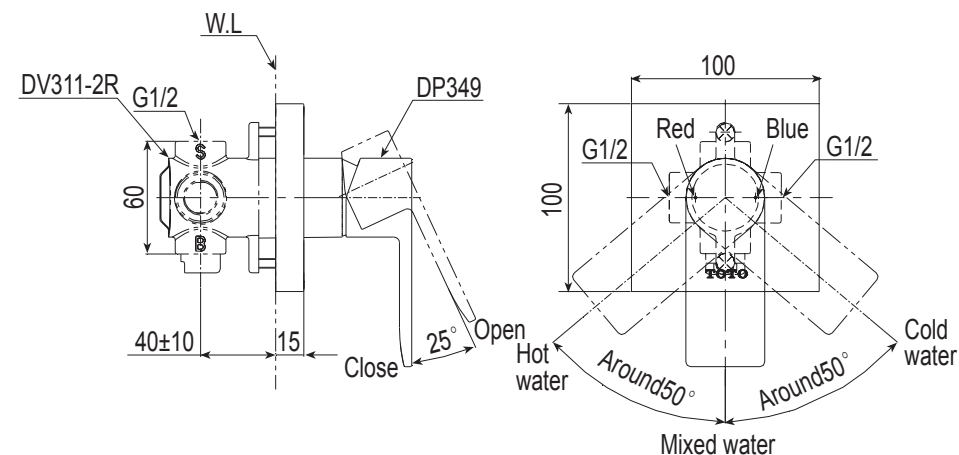


The dimensional unit in the above figure is mm.

## Installation completion figure

DP349 Copper alloy wall-mounted type single-handle double-control concealed water faucet panel

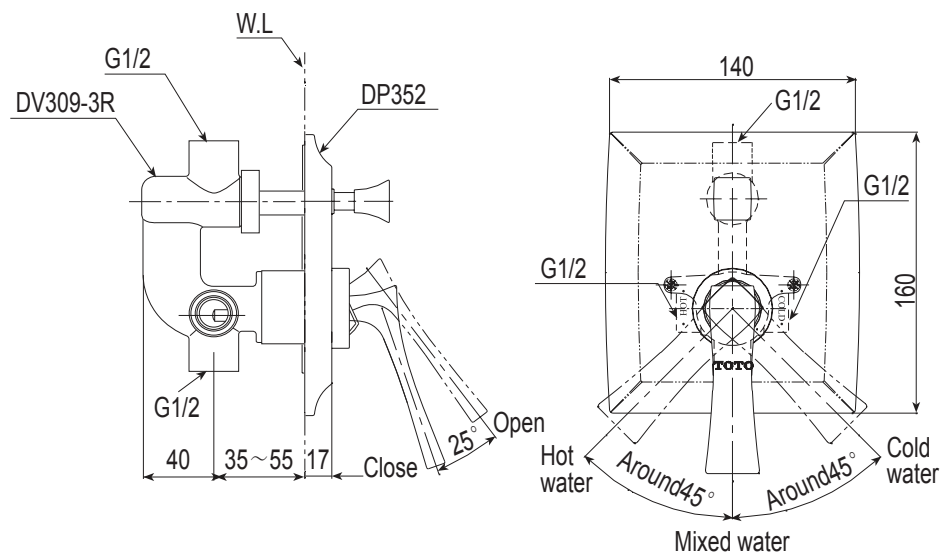
DV311-2R Copper alloy wall-mounted type single-handle double-control concealed faucet valve body



The dimensional unit in the above figure is mm.

## Installation completion figure

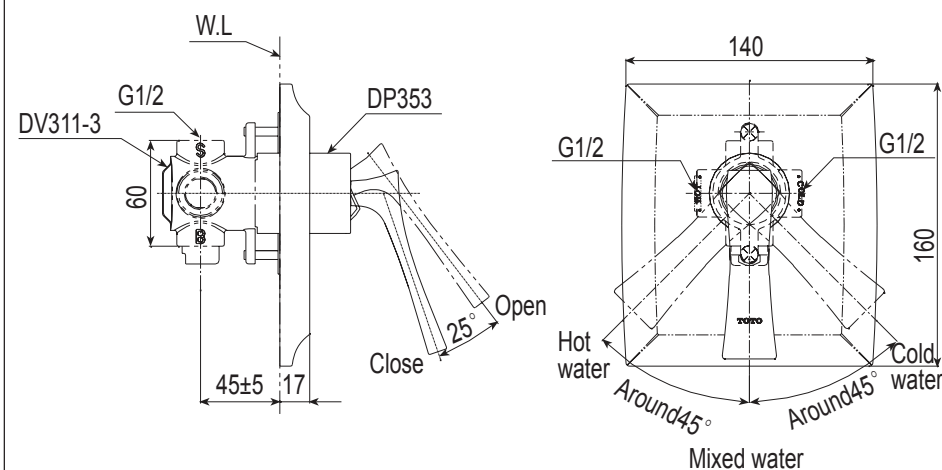
- DP352 Copper alloy wall-mounted type single-handle double-control concealed water faucet panel  
 DV309-3R Copper alloy wall-mounted type single-handle double-control concealed faucet valve body(convertible)



The dimensional unit in the above figure is mm.

## Installation completion figure

- DP353 Copper alloy wall-mounted type single-handle double-control concealed water faucet panel  
 DV311-3 Copper alloy wall-mounted type single-handle double-control concealed faucet valve body



The dimensional unit in the above figure is mm.

# Water nozzle installation

Preparation before installation: DV309S、DV309-3R

## 1. Cleaning in the water supply pipe

Before installation, be sure to remove by washing such foreign matters as dust, sand, etc. in the water supply pipe; in installation, it is imperative to also take care sufficiently not to allow such foreign matters as mud and sand, etc. to enter into the water nozzle or the water supply pipe.

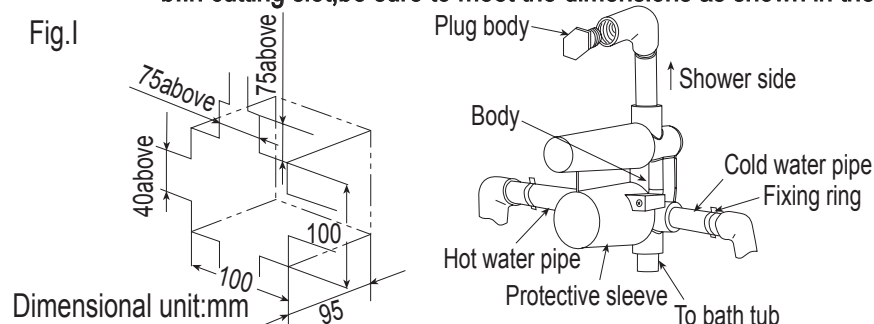
## 2. Installation of main water nozzle body

① As shown in Fig. I, connect properly the main water nozzle body an corresponding pipe and then cut a slot on the wall surface by referring to the beginning of the product.

**⚠ Attention:** a. Before water nozzle installation, be sure to do a water test to prevent water leakage, etc.

b. In cutting slot, be sure to meet the dimensions as shown in the figure.

Fig. I

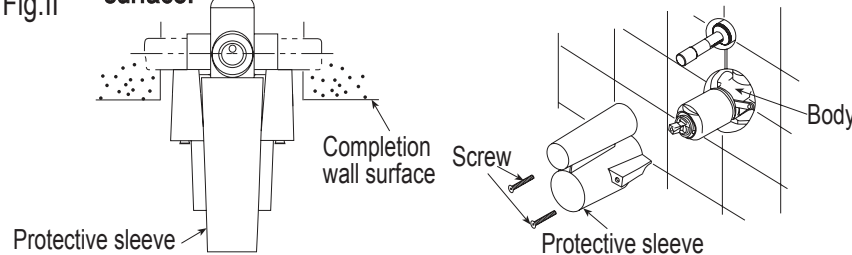


② As shown in Fig. II, use such filling sa cement, etc. to install the product in the wall.

**⚠ Attention:** a. The exposed part from wall must not contact with such building materials as cement, etc.

b. In installation, the product should be kept perpendicular to the wall surface.

Fig. II

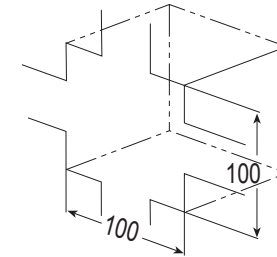


**⚠ Attention:** For the water nozzle with a protective sleeve, remove the protective sleeve and loosen the screws to pull the protective sleeve out. (After installation, the protective sleeve will have no use.)

# Water nozzle installation

Preparation before installation: DV311-2R、DV311-3

Chisel at the burial wall location by referring to the completion figure.



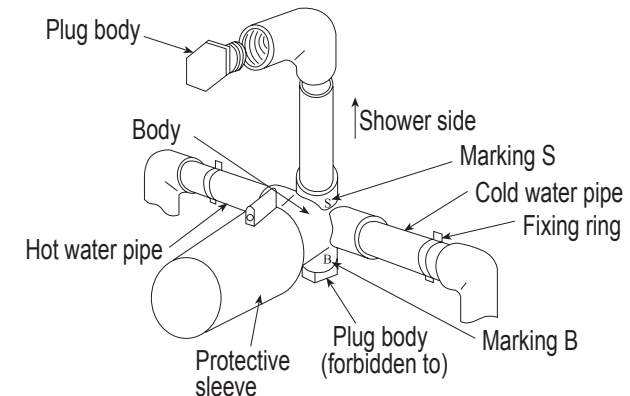
Dimensional unit: mm

## 1. Cleaning in the water supply pipe

Before installation, be sure to remove by washing such foreign matters as dust, sand, etc. in the water supply pipe; in installation, it is imperative to also take care sufficiently not to allow such foreign matters as mud and sand, etc. to enter into the water nozzle or the water supply pipe.

## 2. Connection of water nozzle and pipe

Provide pipe between the side with marking S on the body and the shower.



# Water nozzle installation

## 3. Body installation

Connect the cold and hot water pipes and use the fixing ring to fix.

## 4. Water leakage inspection

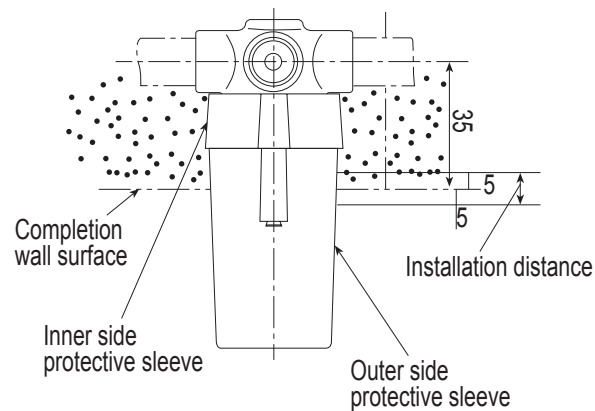
Provide water in the connecting pipe part buried in wall for water leakage inspection.

## 5. Burial

Use mortar to bury. (⚠ Attention: It is not necessary to remove the inner side protective sleeve. Do not allow mortar to enter into the protective sleeve and screw thread hole).

## 6. Trim the wall surface

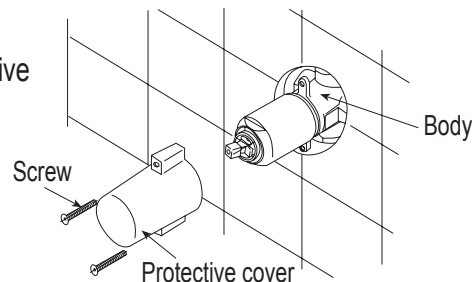
For other series, refer to the completion figure and perform wall trimming according to the right figure.



## 7. Remove the protective sleeve

Loosen the screws and pull out the outer side protective sleeve.

(After installation, no outer side protective sleeve, screws will be mounted)



Dimensional unit:mm

# Water nozzle installation

## Decorative plate and handle part installation(1)

DP348 and DV309S water nozzle

As shown in the figure, install the fixing plate onto the valve body. Then use screws to fix the fixing plate onto the wall. Install the fixing sleeve and decorative cover and then install the decorative plate onto the valve body. Next, install the O-ring cover of the switching part and the O-ring cover of the body part onto the valve body. Then install the handle part into the valve core, install the handle knob onto the switching core shaft and use small screws to fix. Finally, install the indicating cover onto the handle.

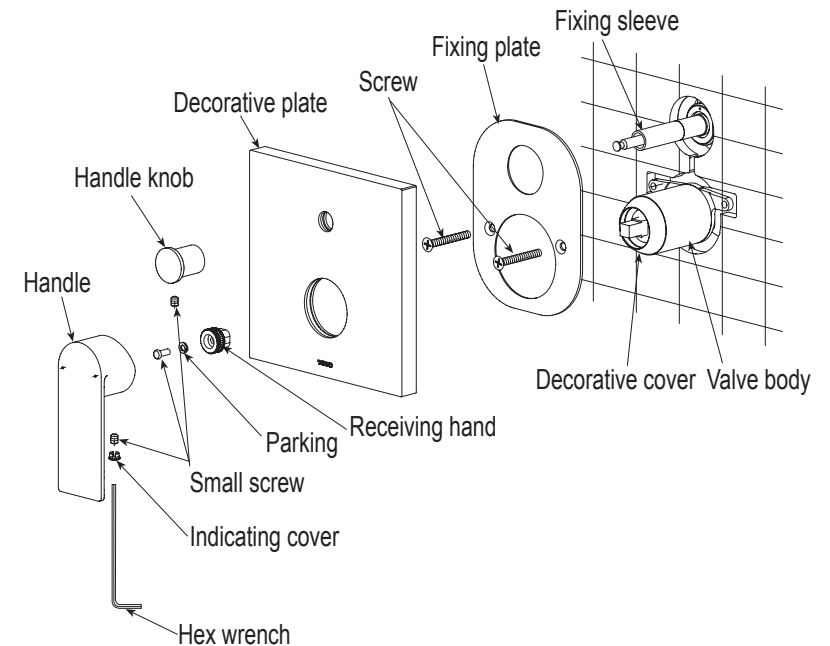
## ⚠ Attention a. The positions of different parts.

b. Tighten the small screws.

c. Fasten the O-ring cover of the switching part and O-ring cover of the body part (prevent the decorative plate from loosening).

d. Do not reverse the direction of the handle (the red color represents the hot water side and the blue color represents the cold water side).

e. When the handle knob fits with the switching core shaft, insert the handle knob to the deepest location and then tighten the small screws.

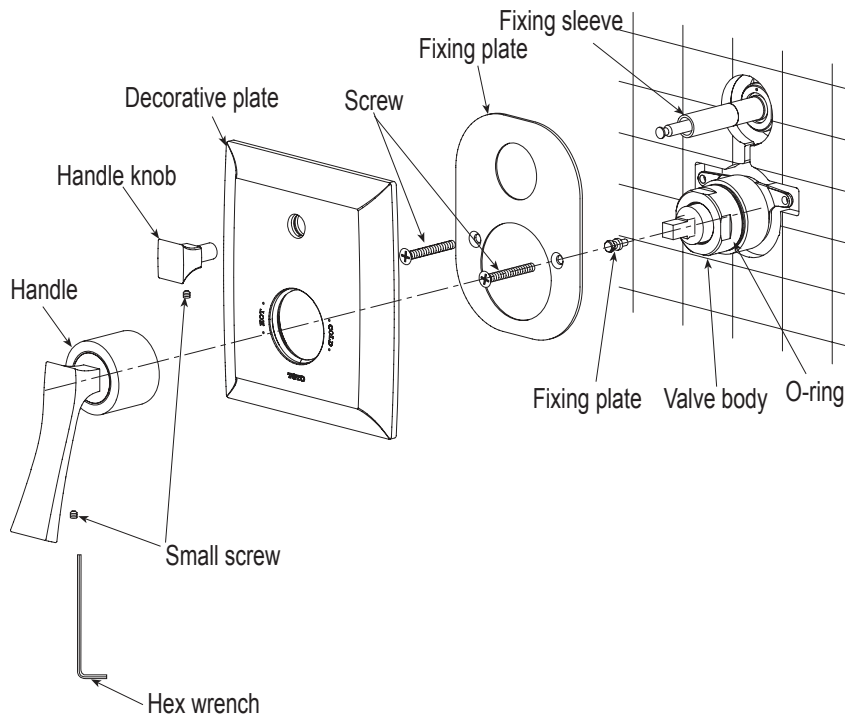


# Water nozzle installation

## Decorative plate and handle part installation(II)

DP352and DV309-3R water nozzle

First install the fixing sleeve onto the valve body. Use the screws removed from the protective sleeve to fix the fixing plate onto the body. Install the decorative plate. Point the square hole in the handle part at the square convex part at the front end of the valve body and push in. Fix with the handle part through the O-ring of the valve body part and use screws to fix the handle. Install the switching handle into the switching valve and fix by using screws. (If it is unable to push the handle part in completely when fixing the handle part and valve body O-ring, please pull the decorative plate out appropriately. After fixing completely the handle part and O-ring part, then push the decorative plate to fit with the wall surface.)

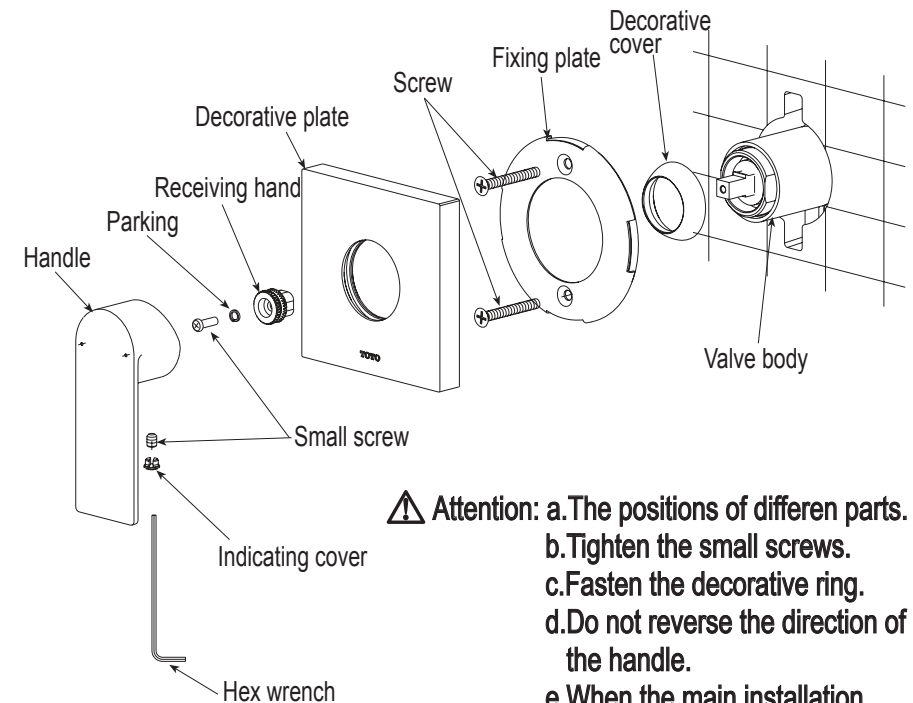


# Water nozzle installation

## Decorative plate and handle part installation(III)

DP349 and DV311-2R water nozzle

First use the fixing screws to fix the fixing plate onto the valve body. Then install the decorative cover, decorative plate and decorative ring (the decorative plate and decorative ring are to be compressed tightly onto the wall). Then use small screws to fix the handle and spline receiving hand onto the valve core. Finally, install the indicating cover onto the handle.



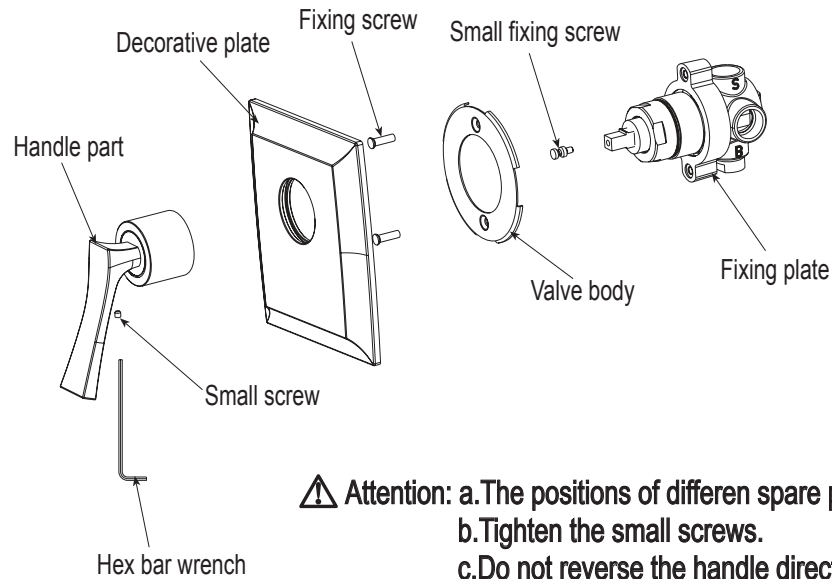
- ⚠ Attention:**
- a. The positions of different parts.
  - b. Tighten the small screws.
  - c. Fasten the decorative ring.
  - d. Do not reverse the direction of the handle.
  - e. When the main installation distance on the wall is 50~60mm, please use two long screws for securing.

# Water nozzle installation

## Decorative plate and handle part installation(IV)

### DP353 and DV311-3 water nozzle

First fix the fixing plate onto the valve body by using fixing screws. Then install the small fixing screws onto the valve core and screw tight. Then put the decorative plate on the handle part and install the mounted handle and decorative plate onto the valve body together. (If it is unable to push the handle part in completely once for all when fixing the handle part and valve body O-ring, please pull the decorative plate out appropriately. After fixing completely the handle part and O-ring part, then push the decorative plate to fit with the wall surface.) Finally, fix the mounted handle onto the valve body by using small screws.



# Manufacturer and vendor

Applicable standard: GB 18145-2014

Product Model No.: See the label on the packaging case

Product name: See the label on the packaging case

Production date: See the label on the packaging case

Assembly factory: TOTO(Dalian)Co.,Ltd.

Telephone: (0411)87624383

Factory address: 17 Dong Bei Second Street, Economic & Technical Development zone, Dalian

TOTO(China)Co.,Ltd.

After-sale service toll free telephone all over the country:

800-820-9787 (fixed telephone)

400-820-9787 (for mobile phone users)

Vendor: TOTO(China)Co.,Ltd.

Address: Room 1915, North Building of Beijing Jiali Center, No.1, Guanghai Road, Chaoyang District, Beijing

Website: [www.toto.com.cn](http://www.toto.com.cn)