

施工说明书 Installation Manual

安装产品前请仔细阅读本施工说明书，并保留备用。
Before installing the product, please read the Installation Manual carefully and keep it for future reference.

TOTO

TOTO

OG399RY(A)
2017.07

目录

目 录	
目 录	1
明细单	2、 3
使用条件与施工上的注意	4
施工上的注意与保养	5
安装完成图	6、 7
水嘴的安装	8
生产厂家与销售商	9

明细单

明细单	
水嘴主体	1套
偏心接管	2个
橡胶垫片	2个
装饰盖	2个
施工说明书	1本
使用说明书	1本

明细单

使用此明细单的产品包括：



TBG01301* 铜合金壁式单柄双控淋浴水嘴
TBG02301* 铜合金壁式单柄双控淋浴水嘴
TBG03301* 铜合金壁式单柄双控淋浴水嘴
TBG04301* 铜合金壁式单柄双控淋浴水嘴
TBG01302* 铜合金壁式单柄双控浴缸水嘴（可转换）
TBG02302* 铜合金壁式单柄双控浴缸水嘴（可转换）
TBG03302* 铜合金壁式单柄双控浴缸水嘴（可转换）
TBG04302* 铜合金壁式单柄双控浴缸水嘴（可转换）
TBG07301* 铜合金壁式单柄双控淋浴水嘴
TBG08301* 铜合金壁式单柄双控淋浴水嘴
TBG09301* 铜合金壁式单柄双控淋浴水嘴
TBG10301* 铜合金壁式单柄双控淋浴水嘴
TBG11301* 铜合金壁式单柄双控淋浴水嘴
TBG07302* 铜合金壁式单柄双控浴缸水嘴（可转换）
TBG08302* 铜合金壁式单柄双控浴缸水嘴（可转换）
TBG09302* 铜合金壁式单柄双控浴缸水嘴（可转换）
TBG10302* 铜合金壁式单柄双控浴缸水嘴（可转换）
TBG11302* 铜合金壁式单柄双控浴缸水嘴（可转换）

使用条件与施工上的注意

使用条件

1. 供冷水*热水压强：
最低压强.....0.05MPa（流动压）
最高压强.....1.0MPa（静压）
推荐使用压强.....0.1-0.5MPa（流动压）
检测压强.....1.6MPa（静压）
2. 供水温度在4℃~90℃，建议使用热水温度60℃，供热水请勿使用蒸汽。
3. 使用环境温度0℃以上。如果低于0℃，水嘴会出现变形、冻裂等现象。
4. 为防止花洒内部损坏，花洒侧吐水温度不得超过60℃，建议使用温度45℃以下。
5. 长时间不使用时，可能导致水嘴内部及外部锈蚀不能使用等现象。
6. 如果您需要废弃本产品，请勿将其作为一般生活垃圾处理，请依照法规经由独立的回收体系进行合适的处理、恢复和回收。
7. 本说明书中的产品具有清洗功能。

施工上的注意

-  **警告** 表示如果无视此标志而误操作时，有可能造成人员重伤或死亡。
-  **注意** 表示如果无视此标志而误操作时，有可能造成人身伤害或财产损失。

警告

1. 水嘴的供热水一侧处于高温状态，请勿使皮肤直接接触五金配件表面，否则可能会烫伤。
2. 请勿配反冷*热水配管，否则可能会烫伤。
3. 供热水请勿使用蒸汽，否则可能会烫伤。
4. 当直接从吐水口侧切换到淋浴器侧或从淋浴器侧切换到吐水口侧时，水温会发生变化，要用手测试水温后再使用，否则可能会烫伤。
5. 如果客户不使用我司水嘴自带的进水口过滤网，可能会出现阀芯因异物进入而导致的漏水或破损的风险。

施工上的注意与保养

⚠ 注意

1. 由于陶瓷阀芯是较精密的部件，请勿擅自分解，否则可能会造成漏水等不良。
2. 请勿撞击本产品，否则可能会造成故障、漏水。
3. 随着产品式样的不断更新，实物存在与图示不符的情况，但基本安装、使用原理相同。

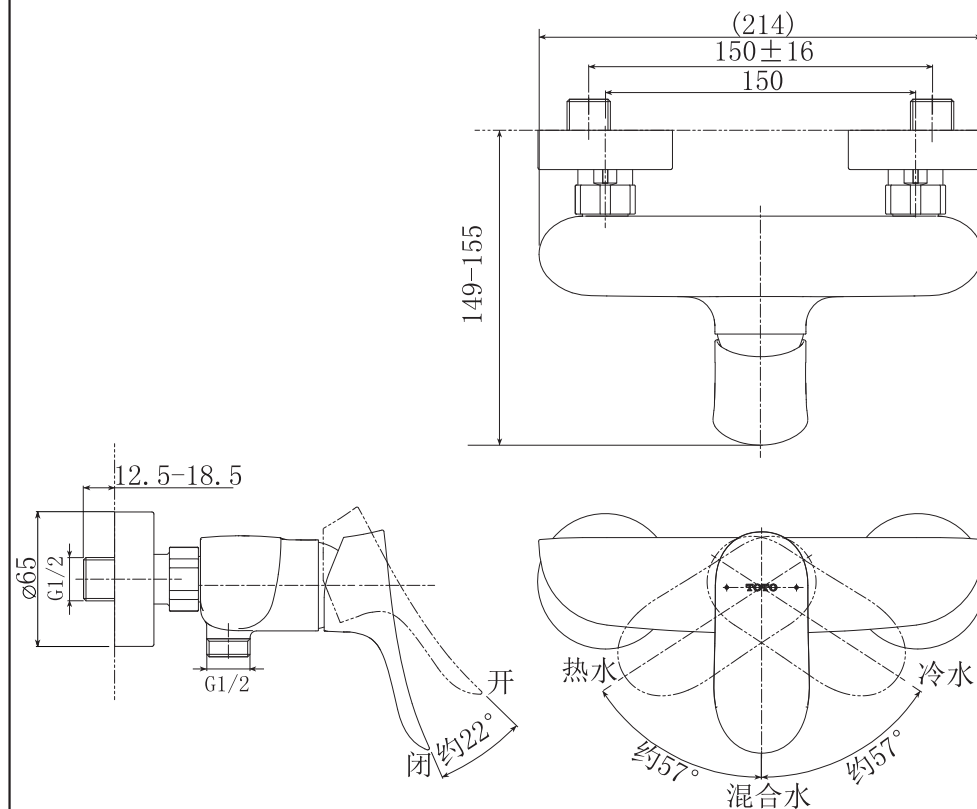
保养

为长期保持产品的美观，请用户按以下方法维护保养。

1. 经常用软布擦拭，间或用软布蘸水擦拭。
2. 当有污垢且比较明显时，请用中性洗涤剂擦拭后充分进行水洗。

安装完成图

铜合金壁式单柄双控淋浴水嘴
例：TBG01301*

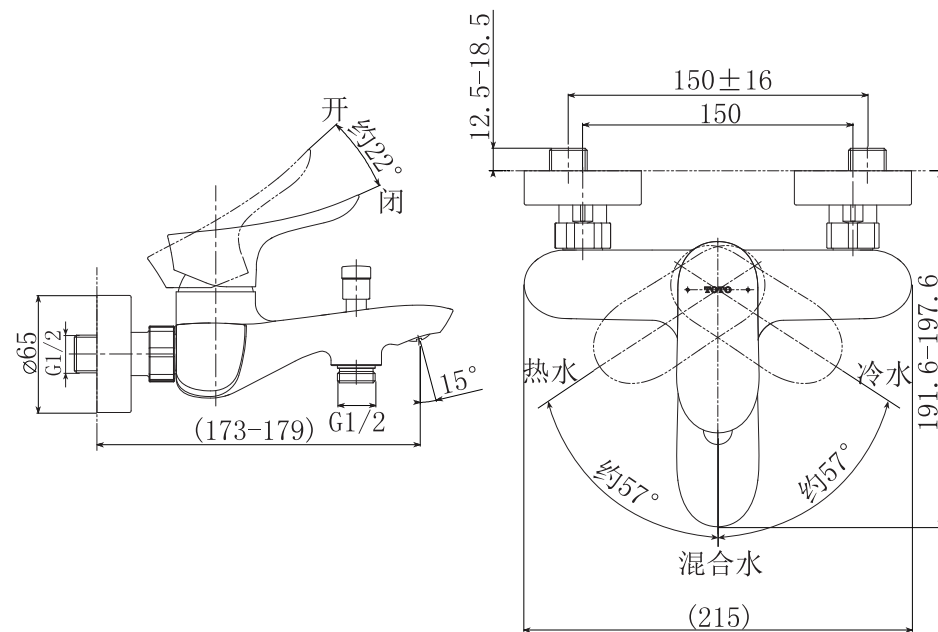


注：上記尺寸单位为mm；
() 内尺寸为参考尺寸。

安装完成图

铜合金壁式单柄双控浴缸水嘴（可转换）

例：TBG01302*



注：上記尺寸单位为mm；
()内尺寸为参考尺寸。

水嘴的安装

1. 供水管内的清扫

安装之前，一定要冲净供水管内的灰尘、砂砾等完成洗净、冲出。

2. 水嘴的安装

(1) 在两个偏心接管涂上螺纹密封膏或缠绕密封胶带，然后旋入冷热供水管中。

注意：调节两个偏心接管，使其中心距离在 150 ± 16 mm范围内，并保证两偏心接管端面相对于壁面成平行，且在同一平面上；冷热供水管与墙面的距离控制在6mm以内，不能露出墙面，否则水嘴将出现间隙或安装不良，如图所示：

(2) 将装饰盖旋入偏心接管，紧贴装修后的墙壁。

注意：为确保安装后装饰盖能完全盖住安装孔，请把握好安装孔的开孔尺寸（推荐在 $\phi 40.5$ mm以下），否则可能影响外观效果。

(3) 把橡胶垫片放入螺母内，将螺母与偏心接管连接，并用扳手拧紧。

注意：a. 拧紧螺母时要先确认过滤垫片是否已放入螺母内。

b. 螺母拧紧不漏水即可，装饰盖和螺母之间可能有间隙。

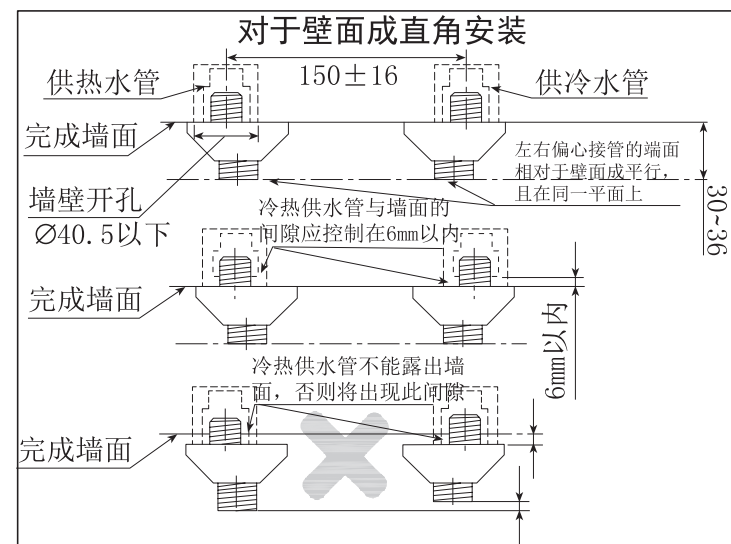


图1：偏心接管的安装

生产厂家与销售商

执行标准：GB18145-2014

产品型号：见包装箱上的标签

产品名称：见包装箱上的标签

生产日期：见包装箱上的标签

组装工厂：东陶（大连）有限公司

电 话：（0411）87624383

厂 址：大连经济技术开发区东北二街17号

东陶(中国)有限公司

全国售后服务电话：800-820-9787(固定电话)

400-820-9787(手机用户)

销售商：东陶(中国)有限公司

地 址：北京市朝阳区光华路1号 北京嘉里中心北楼1915室

网 址：www.toto.com.cn

Table of Contents

Table of Contents	
Table of Contents	1
Specification	2、 3
Use Conditions and Attention on Installation	4
Attention and Maintenance for Installation.....	5
Installation Completion Diagram.....	6、 7
Installation of Spout.....	8

Specification

Specification	
Main Body of the Spout.....	1 set
Connector Tube	2 pieces
Rubber Gasket	2 pieces
Decorative Cover	2 pieces
Installation Manual.....	1 booklet
User Manual.....	1 booklet

Specification

Products using this specification include:

TBG01301* "GO" Exposed Mixing Faucet (Shower)
TBG02301* "GR" Exposed Mixing Faucet (Shower)
TBG03301* "GS" Exposed Mixing Faucet (Shower)
TBG04301* "GA" Exposed Mixing Faucet (Shower)
TBG01302* "GO" Exposed Mixing Faucet (Bath & Shower)
TBG02302* "GR" Exposed Mixing Faucet (Bath & Shower)
TBG03302* "GS" Exposed Mixing Faucet (Bath & Shower)
TBG04302* "GA" Exposed Mixing Faucet (Bath & Shower)
TBG07301* "GE" Exposed Mixing Faucet (Shower)
TBG08301* "GC" Exposed Mixing Faucet (Shower)
TBG09301* "GM" Exposed Mixing Faucet (Shower)
TBG10301* "GB" Exposed Mixing Faucet (Shower)
TBG11301* "GF" Exposed Mixing Faucet (Shower)
TBG07302* "GE" Exposed Mixing Faucet (Bath & Shower)
TBG08302* "GC" Exposed Mixing Faucet (Bath & Shower)
TBG09302* "GM" Exposed Mixing Faucet (Bath & Shower)
TBG10302* "GB" Exposed Mixing Faucet (Bath & Shower)
TBG11302* "GF" Exposed Mixing Faucet (Bath & Shower)

Use Conditions and Attention on Installation

Use Conditions

1. Pressure for cold water * hot water supplying
Minimum pressure 0.05 MPa (flow pressure)
Maximum pressure 1.0 MPa (static pressure)
Recommended pressure.....0.1 ~ 0.5 MPa (flow pressure)
Detection pressure 1.6 MPa (static pressure)
2. The water supply temperature is between 4° C and 90° C. It is recommended to use hot water temperature of 60° C. Do not use steam when supplying hot water.
3. Ambient temperature of the use above 0° C. If it is lower than 0° C, the spout will have some issues such as deformations, cracking, etc.
4. To prevent internal damage to the shower, the temperature of the water laterally flowed from the showerhead should not exceed 60° C. The recommended temperature is below 45° C.
5. When it is not used for a long time, it may cause the inside and outside of the spout to rust and corrode, leading to malfunction.
6. If you need to dispose of this product, do not dispose of it as general household waste. Please follow the regulations to properly dispose, recover and recycle it through an independent recycling system.
7. The products stated in the Manual have a cleaning function.

Attention on Installation



Warning: Indicates that if you overlook this sign, causing misoperation, it may result in serious injury or death.



Attention: Indicates that if you overlook this sign, causing misoperation, it may cause personal injury or property damage.



Warning

1. As one side of the spout to supply hot water is in a high-temperature state, do not let the skin be directly in contact with the surface of the hardware fitting; otherwise it may cause burn injuries.
2. Do not assemble cold * hot water tubing incorrectly; otherwise it may cause burn injuries.
3. Do not use steam when supplying hot water; otherwise it may cause burn injuries.
4. When you switch from the water outlet side to the shower side, or from the shower side to the water outlet side directly, the water temperature will change, so please use the water after feeling the water temperature with the hand, otherwise scalding may occur.
5. If a customer fails to use the self-contained water inlet filter net of our water faucet, there is such a risk as water leakage or damage due to foreign matters entering into the spool.

Attention and Maintenance for Installation

⚠ Attention

1. Since the ceramic valve spool is a relatively precise component, do not disassemble it without authorization; otherwise it may cause water leakage and other defects.
2. Do not hit this product; otherwise it may cause malfunction or water leakage.
3. With the product model being updated constantly, the physical object may not coincide with the figure. However, the basic installation and operation principles are the same.

Maintenance

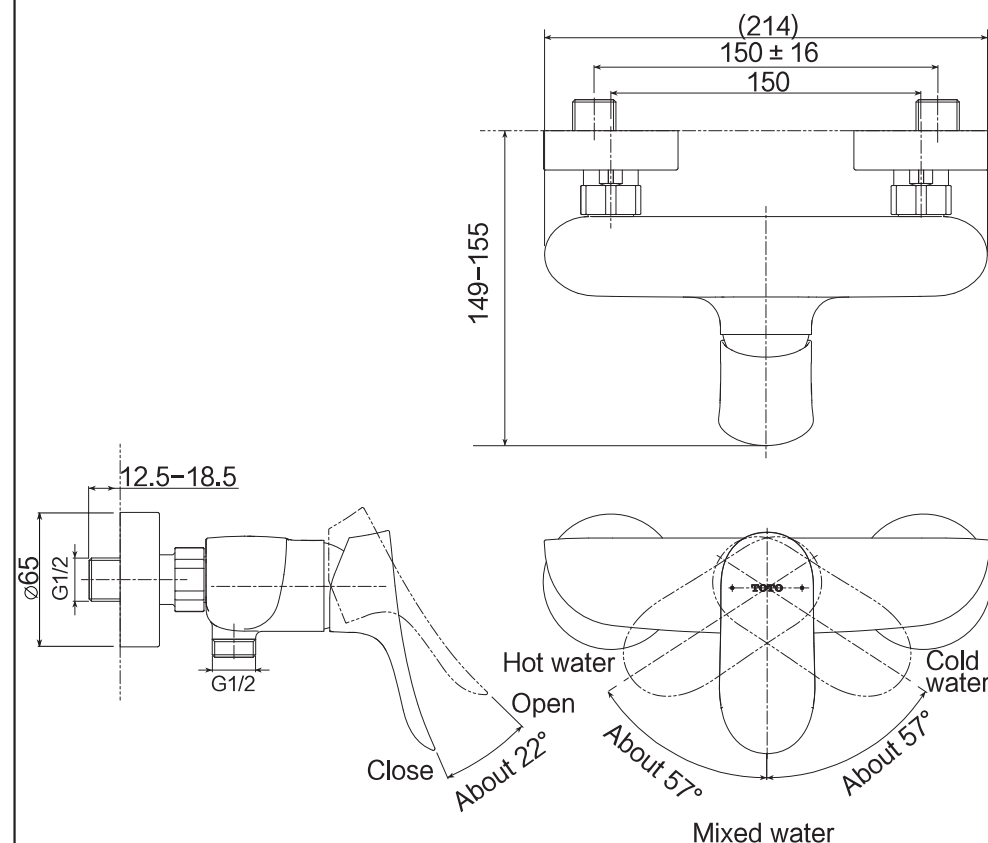
In order to maintain the decent appearance of the product for a long time, please maintain it according to the following methods.

1. Wipe with a soft cloth often, or wipe with a soft cloth with water occasionally.
2. When there is dirt and it is obvious, please wash it with water thoroughly after wiping it with neutral detergent.

Installation Completion Diagram

Exposed Mixing Faucet (Shower)

Example: TBG01301*

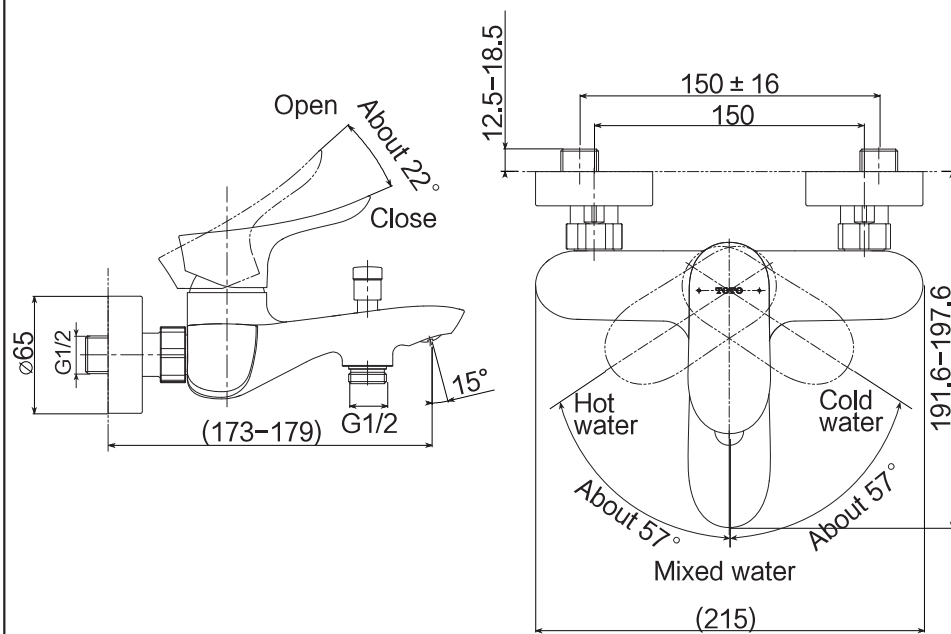


Note: The unit of size in the figure is mm
The size in the () is the reference size

Installation Completion Diagram

Exposed Mixing Faucet (Bath & Shower)

Example: TBG01302*



Note: The unit of size in the figure is mm
The size in the () is the reference size

Installation of Spout

1. Cleaning in the water supply pipe

Before installation, be sure to flush foreign matter such as dust and gravel in the water supply pipe.

2. Installation of spout

(1) Apply thread sealant or sealing tape on the two connecting tubes and then screw them in the cold and hot water supply pipes.

Note: Adjust the two connecting tubes to make the center distance fall within $150 \pm 16\text{mm}$ and keep the end faces parallel in relation to the wall surface and on the same plane; the distance from the cold and hot water supply lines to the wall surface should be within 6mm without exposing from the wall surface, otherwise, a gap or poor installation will occur to the faucet, as shown in the figure:

(2) Screw the escutcheon in the connecting tube, being tightly close to the finished wall.

Note: To ensure that the escutcheon can cover the mounting hole completely after installation, please check the mounting hole opening dimension (below $\varnothing 40.5\text{mm}$ as recommended), otherwise, the physical appearance may be affected.

(3) Put the gasket in the nut and connect the nut with the connecting tubes and tighten with a wrench.

Note: a. Before tightening the nut, please make sure the gasket is in the nut.

b. Just tighten the nut to the point with no water leakage. A gap may exist between the escutcheon and nut.

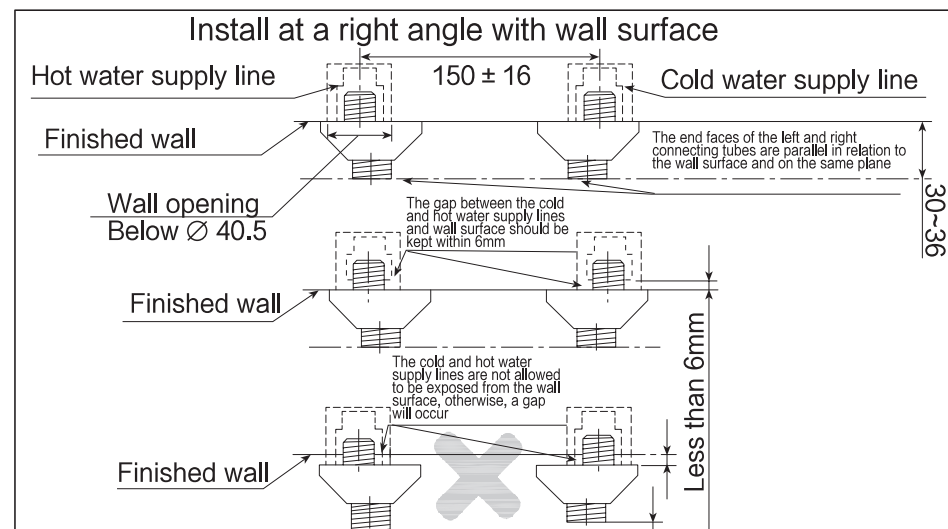


Figure 1: Installation of connecting tubes

TOTO Asia Oceania Pte. Ltd.

Telephone:65-6744-6955

FAX: 65-6841-0819

Address: 10 Eunos Road 8 #12-07 Singapore Post Centre
Singapore 408600

Website:asia.toto.com

TOTO KOREA LTD.

전화번호 : (02)-3141-8236

FAX 번호 : (02)-3141-8240

주소 : 서울시 마포구 상수동 351-16번지 로이코빌딩 3층

홈페이지 : <http://www.totokr.co.kr>