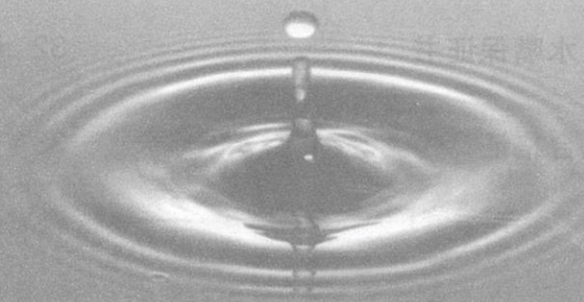


产品说明书

TOTO



OG357RY

目 录

明细单	1、2
使用上的注意	3
组合安装完成图	4~11
安装完成图	12~18
水嘴的安装	19~24
拆卸与检查	25~31
水嘴保证书	32
合格证	33

明 细 单

DBS111、DBX125CF

本体部	1套
紧固螺钉	1套
装饰盖	1套
螺钉	1套
塞盖	1套
淋浴器	1套(DBX125CF场合下)
淋浴软管	1套(DBX125CF场合下)

DBS115

本体部	1套
紧固螺钉	1套
连接部	1套

明 细 单

DB252、DB253R

本体部	-----	1套
手柄部	-----	2套 (DB253R为3套)
固定接手部	-----	2套 (DB253R为3套)
说明书	-----	1本

DB245、DB245A、DB246R、DB246AR

本体部	-----	1套
手柄部	-----	2套 (DB246R、DB246AR为3套)
说明书	-----	1本

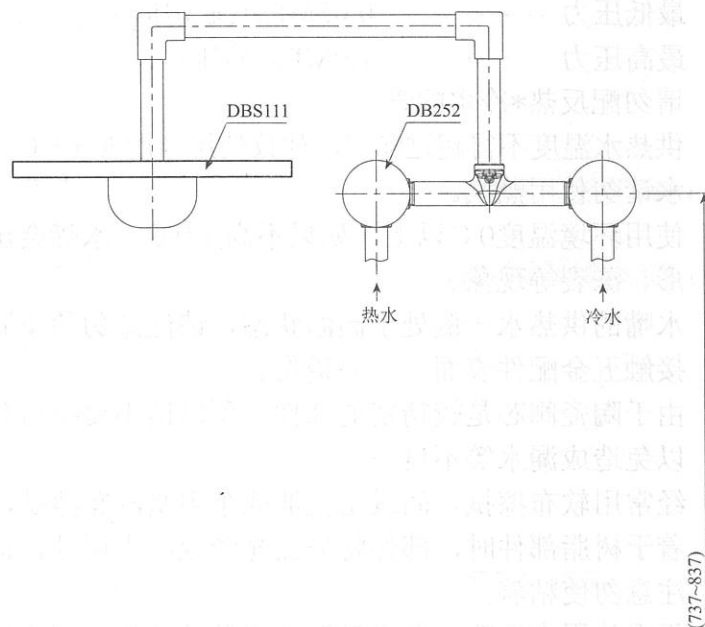
使用上的注意

※为使水嘴能够安全正常使用，使用前请务必阅读“使用上的注意”正确使用水嘴。

1. 供冷水*供热水压力
最低压力 ----- 0.05MPa (流动压)
最高压力 ----- 1.0MPa (静压)
2. 请勿配反热*冷水配管。
3. 供热水温度不得超过85℃，建议使用温度60±5℃，供热水请勿使用蒸汽。
4. 使用环境温度0℃以上，如果不高于0℃，水嘴会出现变形、冻裂等现象。
5. 水嘴的供热水一侧处于高温状态，请注意勿使皮肤直接接触五金配件表面，当心烫伤。
6. 由于陶瓷阀芯是较精密的部件，所以请不要擅自分解，以免造成漏水等不良。
7. 经常用软布擦拭，间或用机油或车用蜡浸布擦拭，但粘着于树脂部件时，部件将失去光泽或产生锈蚀，请充分注意勿使粘着。
8. 不得使用去污粉、抛光粉等含粗颗粒的洗涤剂或尼龙刷帚。
9. 由于酸性洗涤剂能侵蚀镀层，故不得使用，如果用酸性洗涤剂洗过瓷砖，要立即对瓷砖及水嘴充分进行水洗。
10. 长时间不使用时，可能导致水嘴内部及外部锈蚀不能使用等现象。
11. 随着产品式样的不断更新，实物可能与图示不符，但基本原理相同。

组合安装完成图

DB252推荐组合
①DBS111+DB252

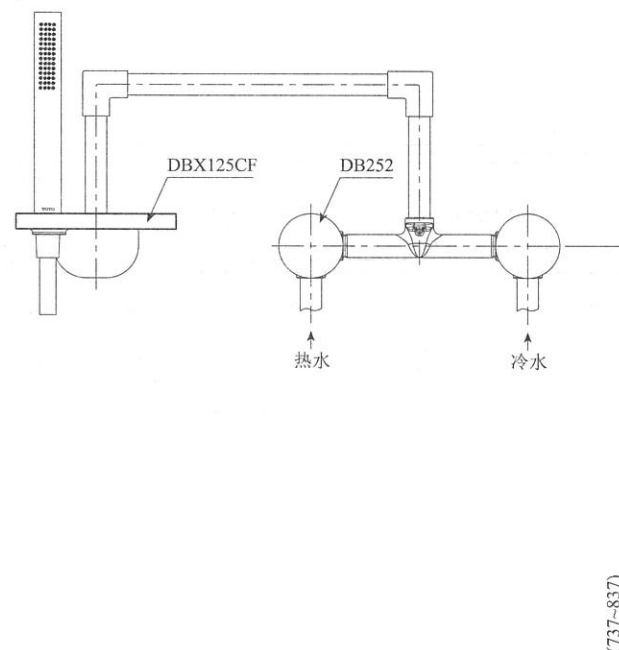


图中尺寸单位为mm 地面或浴缸底面

※()内尺寸为推荐安装尺寸,但可以根据浴室空间大小,自由组合安装。

组合安装完成图

DB252推荐组合
②DBX125CF+DB252



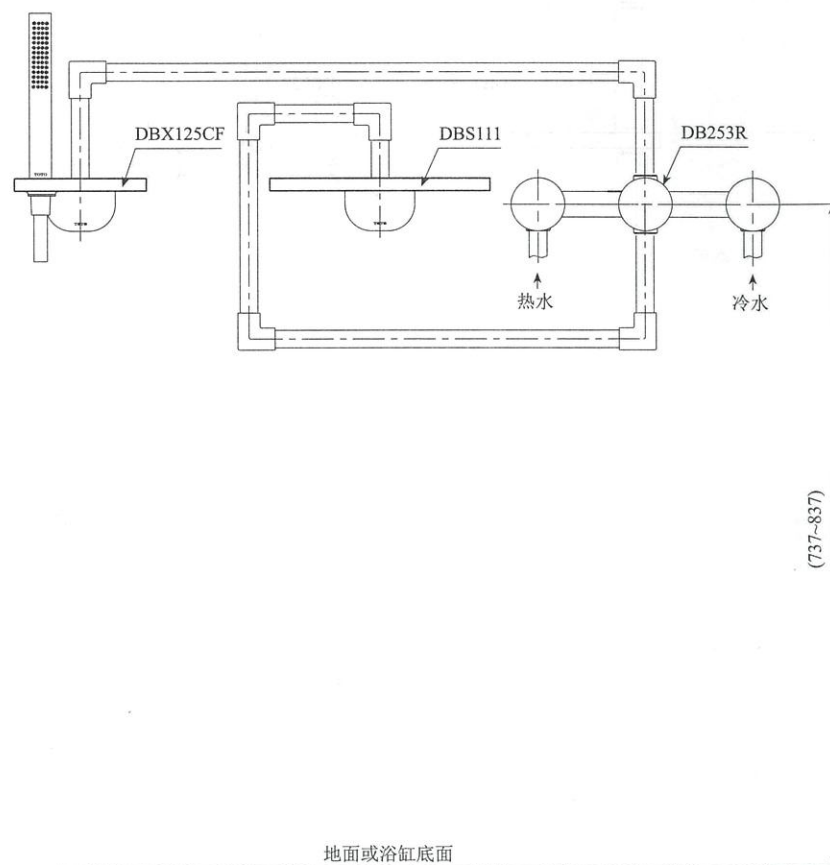
图中尺寸单位为mm 地面或浴缸底面

※()内尺寸为推荐安装尺寸,但可以根据浴室空间大小,自由组合安装。

组合安装完成图

DB253R推荐组合

①DBX125CF+DBS111+DB253R



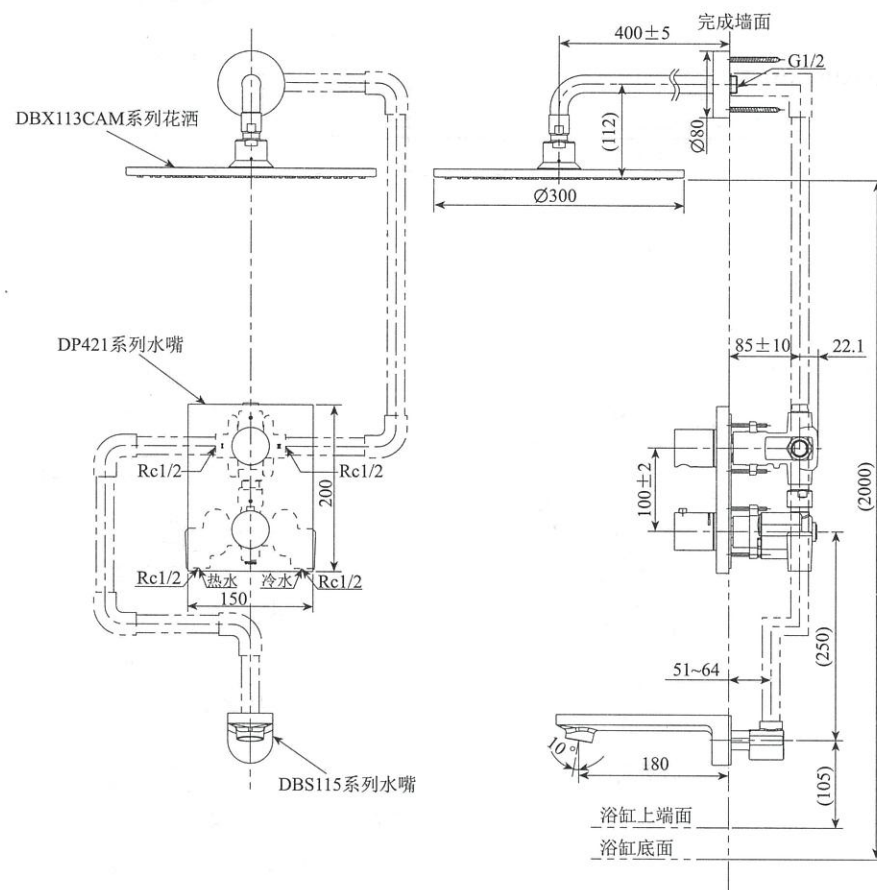
图中尺寸单位为mm

※()内尺寸为推荐安装尺寸,但可以根据浴室空间大小,自由组合安装。

组合安装完成图

DBS115推荐组合

①DBX113CAM/DP421+DV421/DBS115

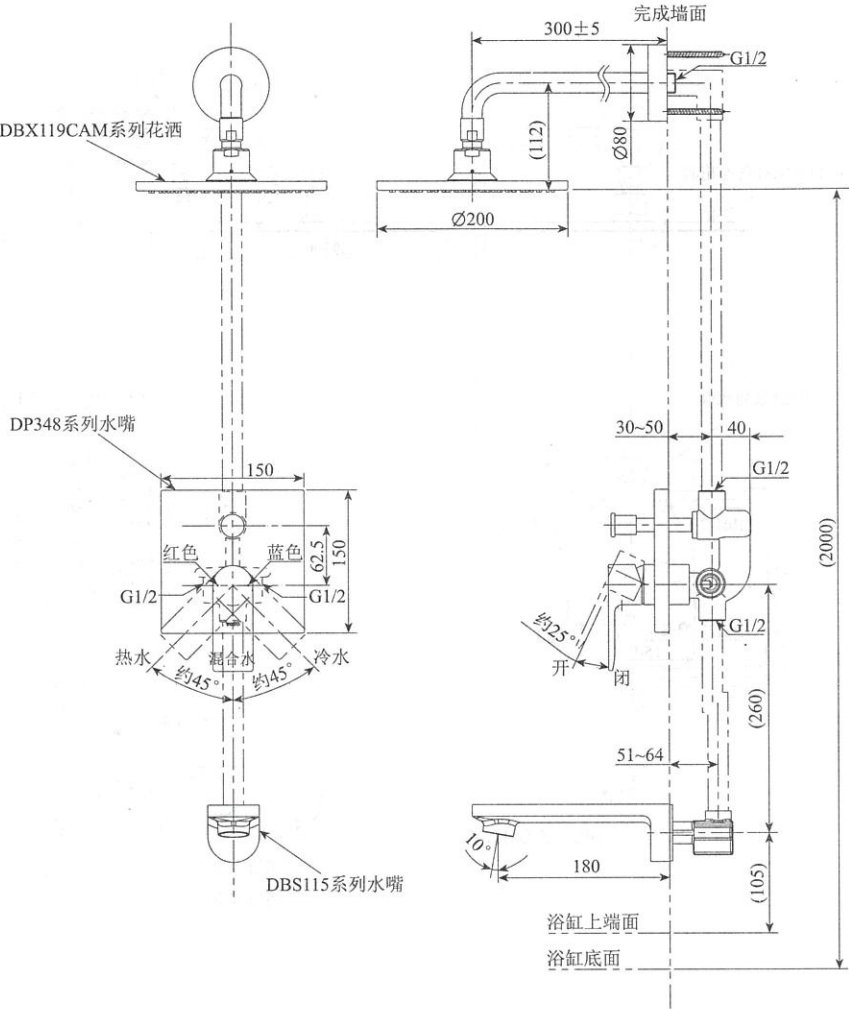


图中尺寸单位为mm

※()内尺寸为推荐安装尺寸,但可以根据浴室空间大小,自由组合安装。

组合安装完成图

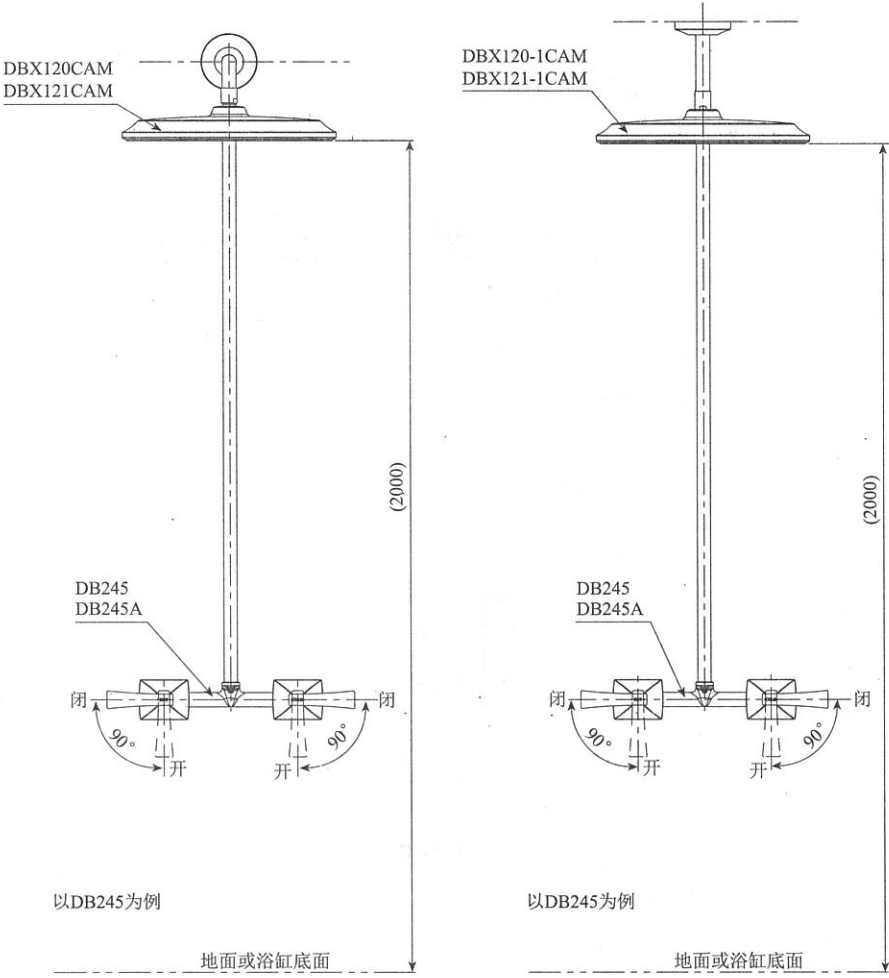
DBS115推荐组合
②DBX119CAM/DP348+DV309-5R/DBS115



图中尺寸单位为mm
※()内尺寸为推荐安装尺寸,但可以根据浴室空间大小,自由组合安装。

组合安装完成图

DB245、DB245A推荐组合
①DBX120CAM/DBX121CAM+DB245/DB245A
②DBX120-1CAM/DBX121-1CAM+DB245/DB245A

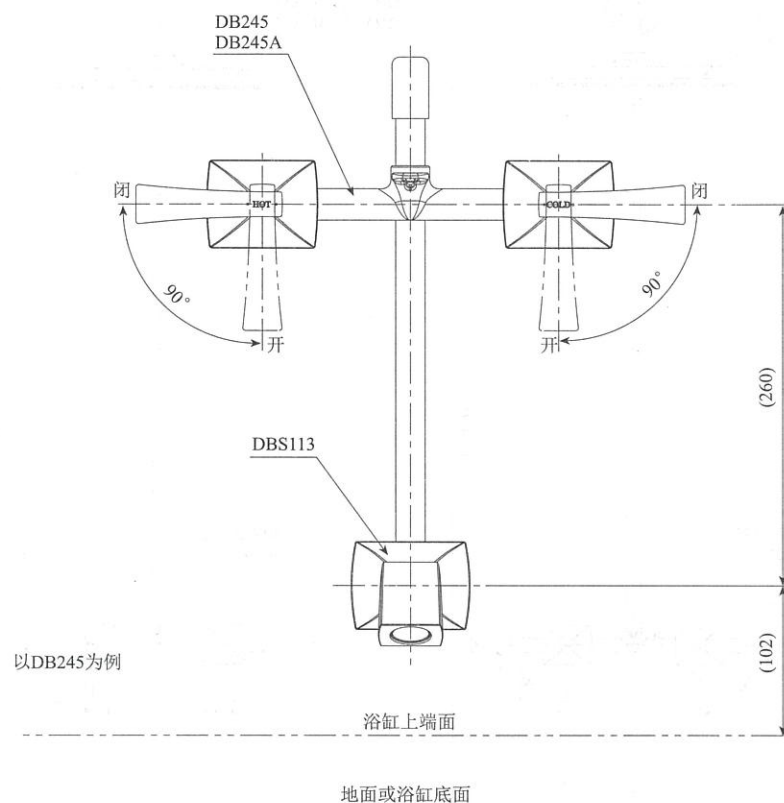


图中尺寸单位为mm
※()内尺寸为推荐安装尺寸,但可以根据浴室空间大小,自由组合安装。

组合安装完成图

DB245、DB245A推荐组合

③DBS113+DB245/DB245A



图中尺寸单位为mm

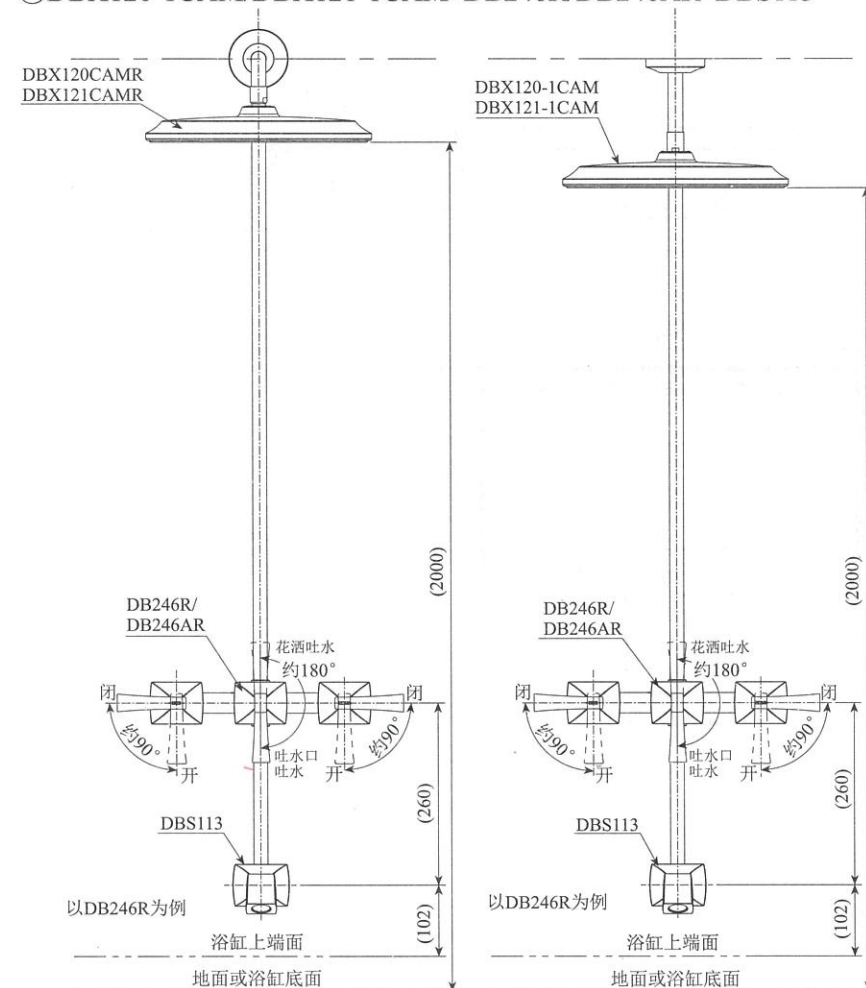
※()内尺寸为推荐安装尺寸,但可以根据浴室空间大小,自由组合安装。

组合安装完成图

DB246R、DB246AR推荐组合

①DBX120CAMR/DBX121CAMR+DB246R/DB246AR+DBS113

②DBX120-1CAM/DBX121-1CAM+DB246R/DB246AR+DBS113

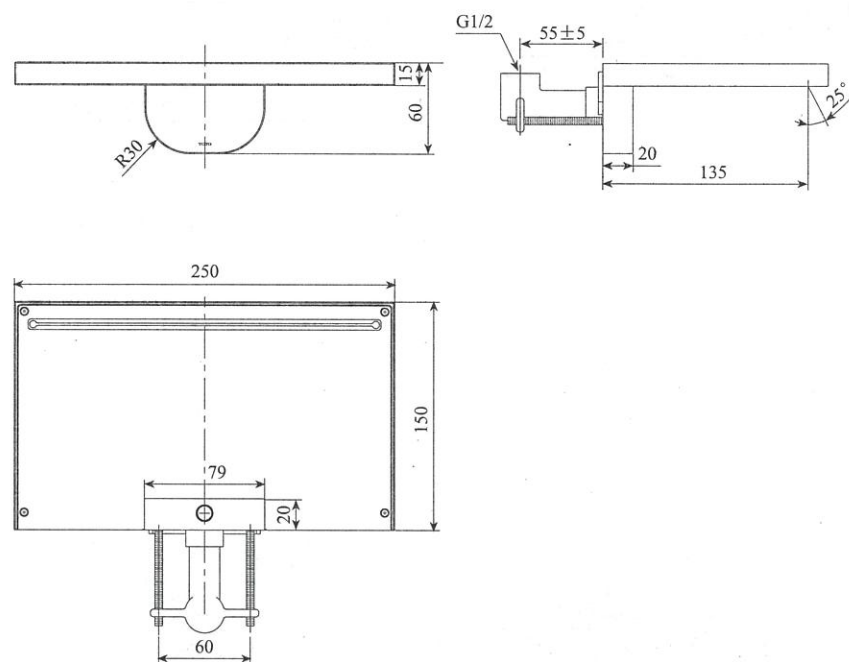


图中尺寸单位为mm

※()内尺寸为推荐安装尺寸,但可以根据浴室空间大小,自由组合安装。

安装完成图

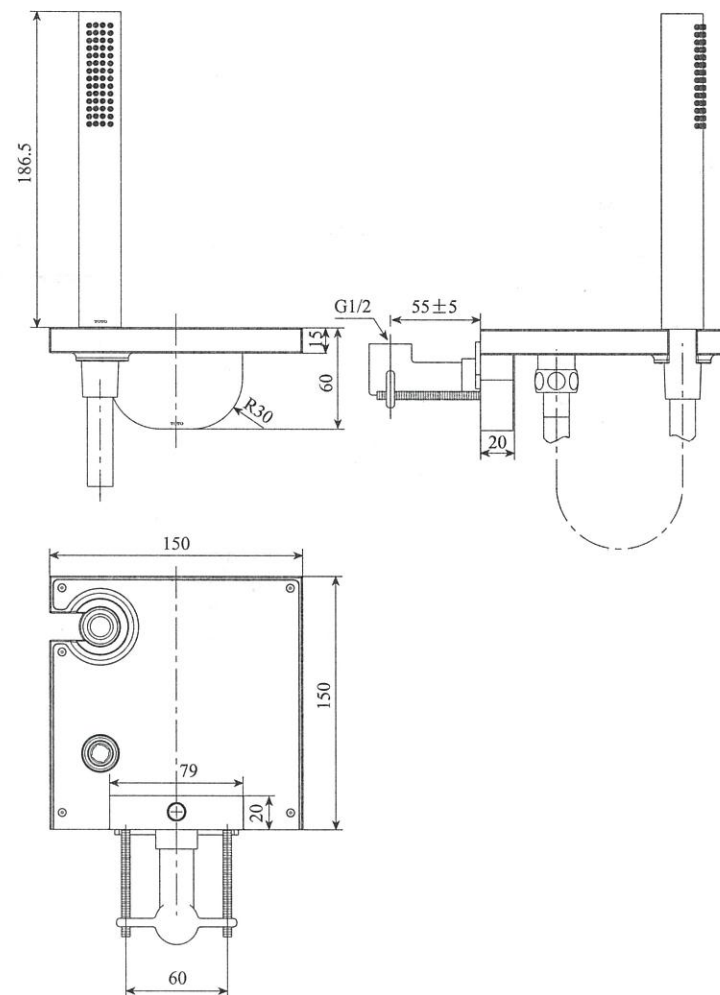
DBS111系列水嘴



注: () 内为建议安装尺寸, 上記尺寸单位为: mm

安装完成图

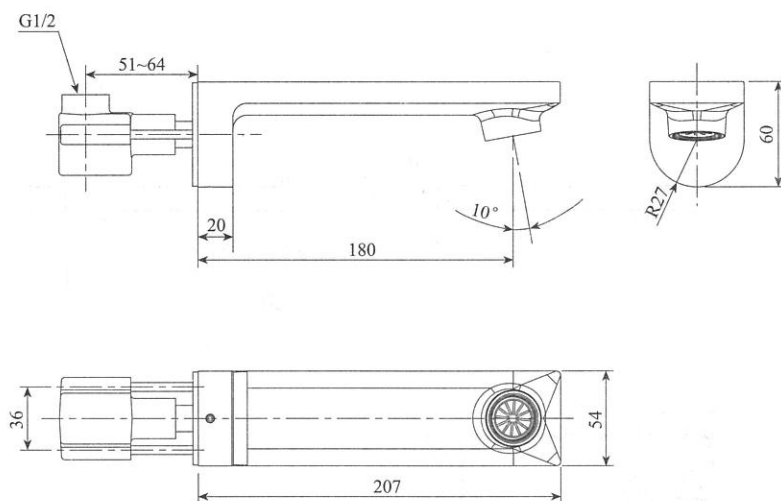
DBX125CF系列水嘴



注: () 内为建议安装尺寸, 上記尺寸单位为: mm

安装完成图

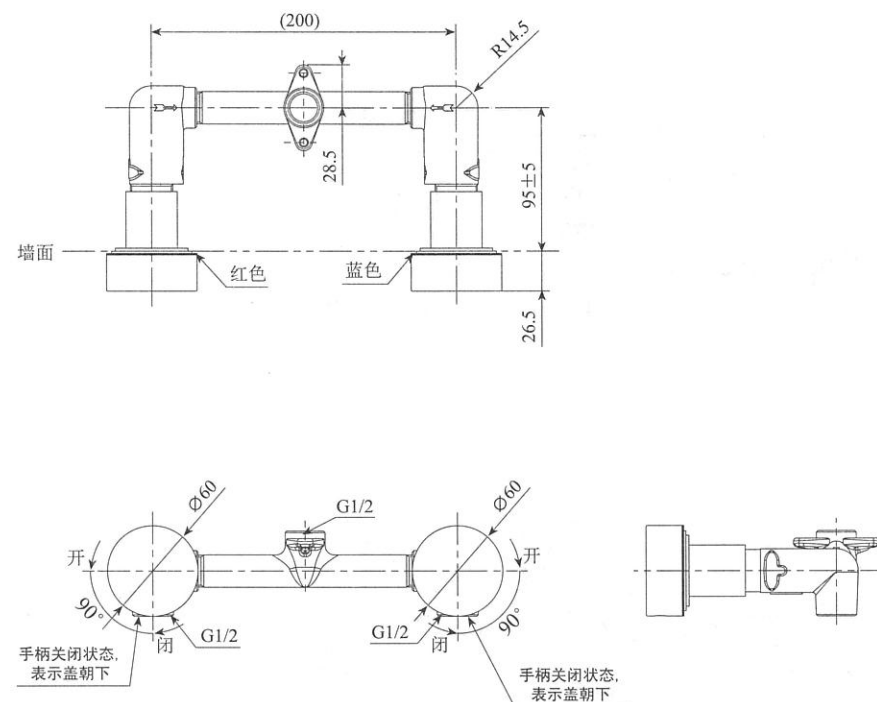
DBS115系列水嘴



注: () 内为建议安装尺寸, 上記尺寸单位为: mm

安装完成图

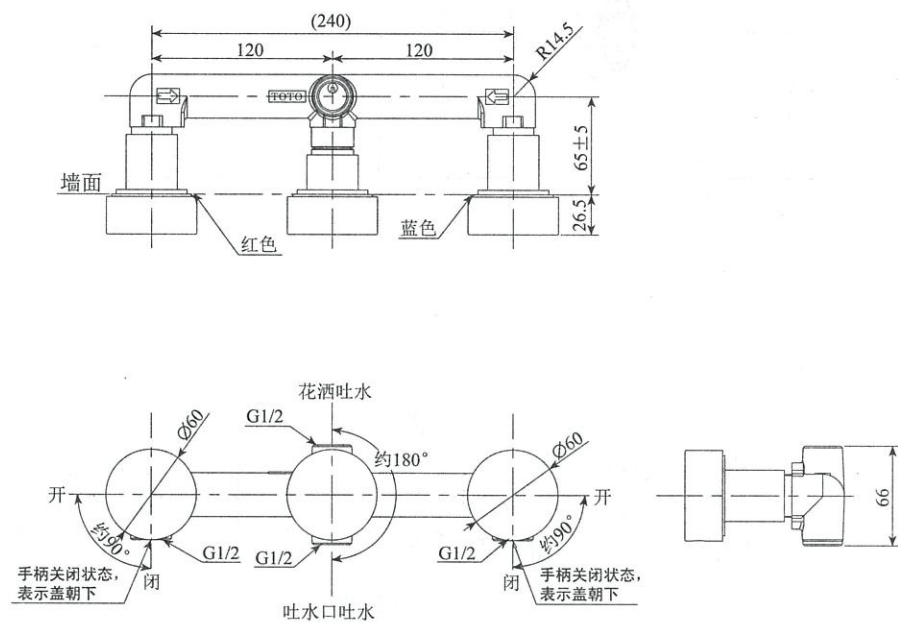
DB252系列水嘴



注: () 内为建议安装尺寸, 上記尺寸单位为: mm

安装完成图

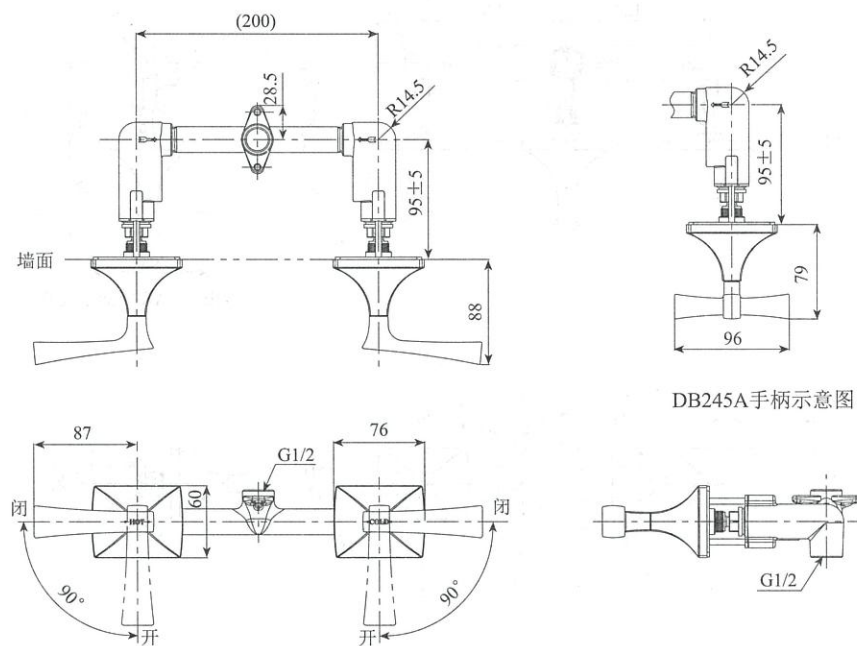
DB253R系列水嘴



注:()内为建议安装尺寸, 上记尺寸单位为: mm

安装完成图

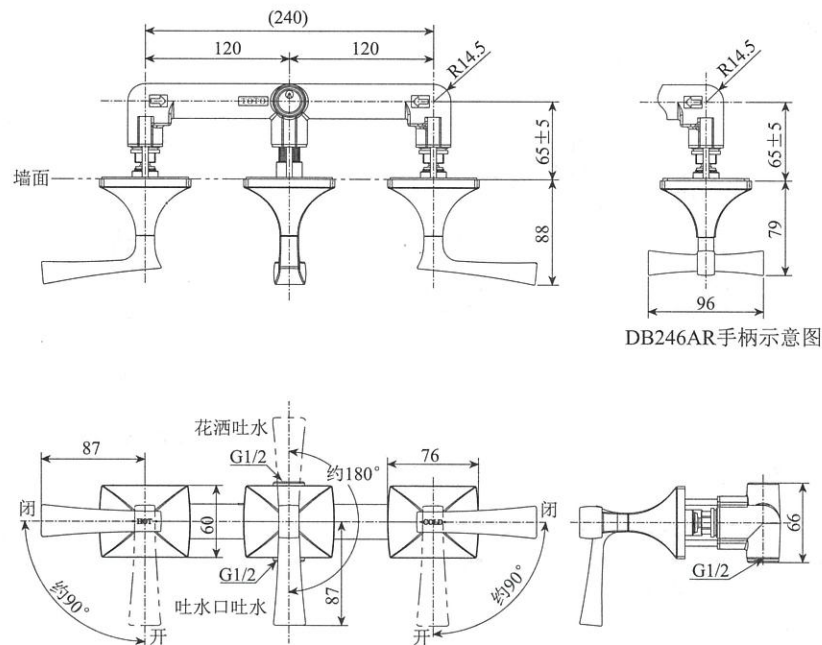
DB245、DB245A系列水嘴



注:()内为建议安装尺寸, 上记尺寸单位为: mm

安装完成图

DB246R、DB246AR系列水嘴



DB246AR手柄示意图

注：() 内为建议安装尺寸，上记尺寸单位为：mm

水嘴的安装

1. 供水管内的清扫

安装之前，一定要冲净供水管内的灰尘、砂砾等异物；安装过程中也应充分注意勿使泥沙等杂质进入水嘴或供水管内部。

2. 水嘴主体的安装

①事先把水嘴主体和相应的管子连接好，然后参照图示尺寸在墙面开槽。

注意：a. 在水嘴安装前，务必试水，以防漏水等不良。

b. 在开槽时，务必满足图示尺寸。

②如图所示，用水泥等填料将产品安装在墙内。

注意：a. 露出墙外的部分不得沾上水泥等建筑材料。

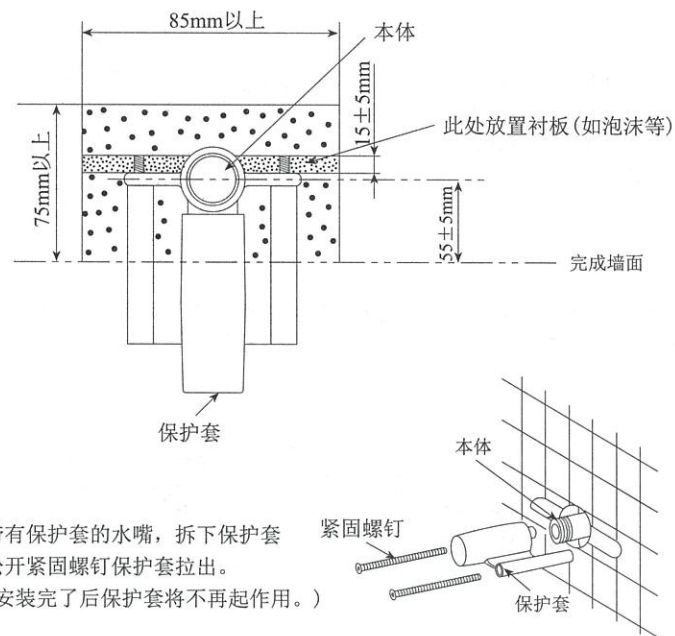
b. 安装时产品应与墙面保持垂直。

③将水嘴本体部调正位置装到固定接手（已装好O型圈，不得随意拆卸）上，固定接手（已装好O型圈，不得随意拆卸）要充分插入水嘴本体部，用紧固螺钉拧紧即可。

DBS115水嘴场合：

③将接手（已装好O型圈，不得随意拆卸）调正位置装到埋墙本体露出的接头上，接手（已装好O型圈，不得随意拆卸）要充分插入埋墙本体，用紧固螺钉拧紧即可。

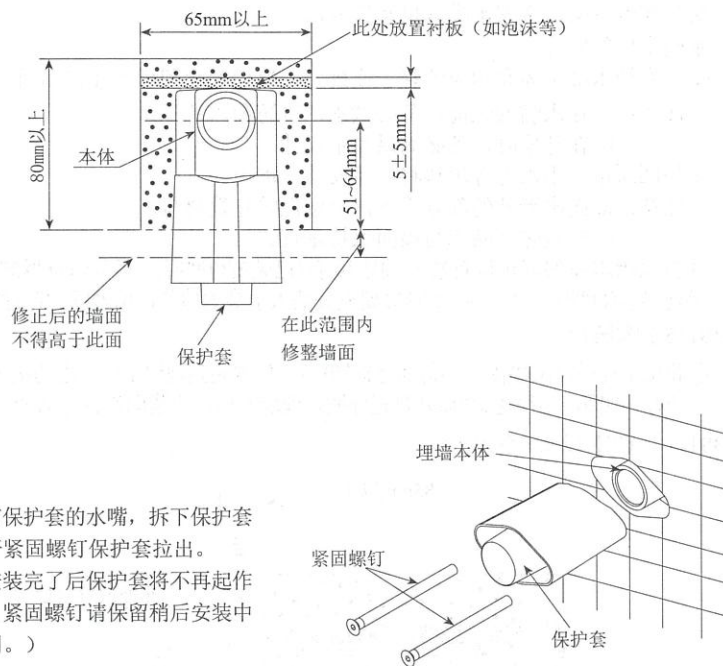
DBS111、DBX125CF系列水嘴：



※注：带有保护套的水嘴，拆下保护套
松开紧固螺钉保护套拉出。
(安装完了后保护套将不再起作用。)

水嘴的安装

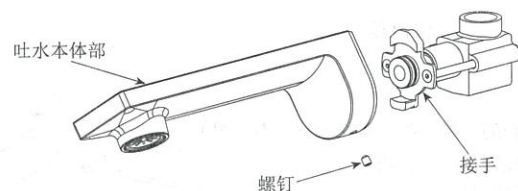
DBS115系列水嘴



※注：带有保护套的水嘴，拆下保护套
松开紧固螺钉保护套拉出。
（安装完后保护套将不再起作用，
紧固螺钉请保留稍后安装中
使用。）

DBS115水嘴场合：

如下图所示：将吐水本体部倾斜旋入已固定好的接手（已装好O型圈，不得随意拆卸）上，旋至本体竖直卡住，从本体下方旋入螺钉顶紧即可。



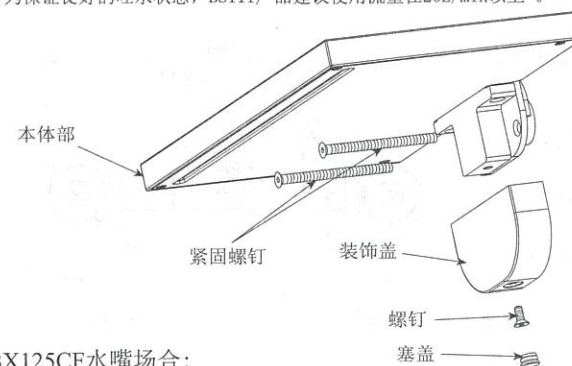
水嘴的安装

DBS111水嘴场合：

如下图所示：将本体部安装在墙内露出的接手上。

再将紧固螺钉通过衬板对准墙内相应的螺纹口后，充分拧紧螺钉，然后将下端装饰盖通过螺钉固定在本体上，最后将塞盖盖上。

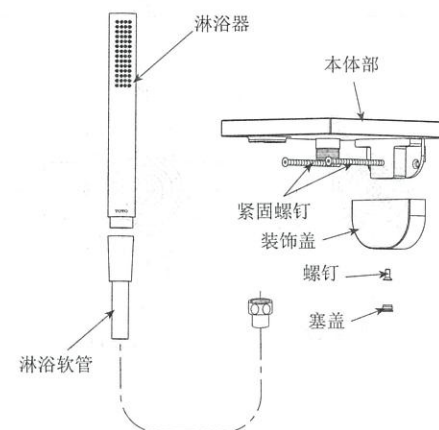
<注>为保证良好的吐水状态，BS111产品建议使用流量在20L/min以上。



DBX125CF水嘴场合：

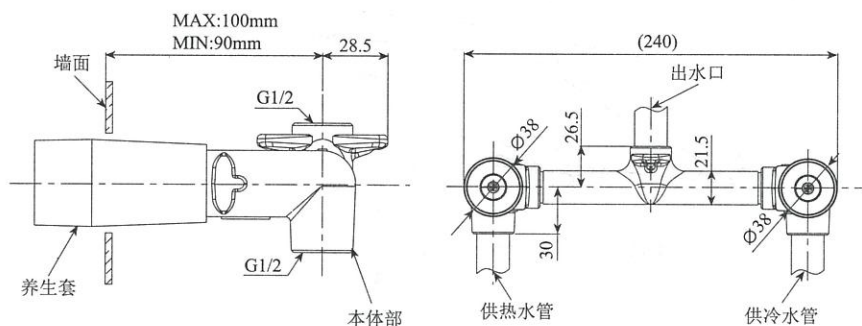
如下图所示：

1. 将本体部安装在墙内露出的接手上。
2. 将紧固螺钉通过衬板对准墙内相应的螺纹口后，充分拧紧螺钉。
3. 将下端装饰盖通过螺钉固定在本体上，后将塞盖盖上。
4. 将淋浴软管两端分别与本体部接手、淋浴器相连接。

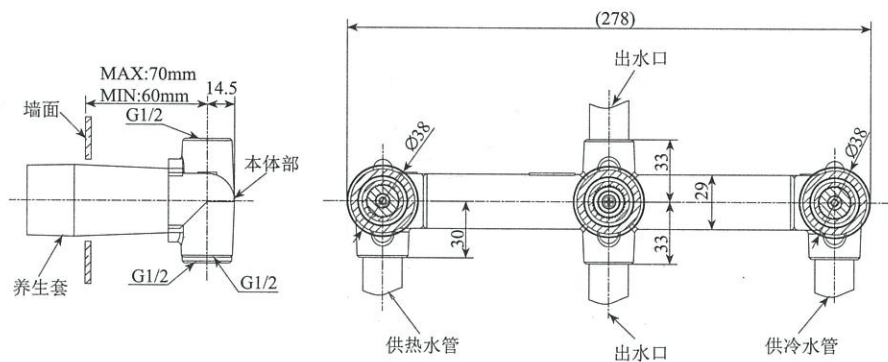


水嘴的安装

DB252系列水嘴

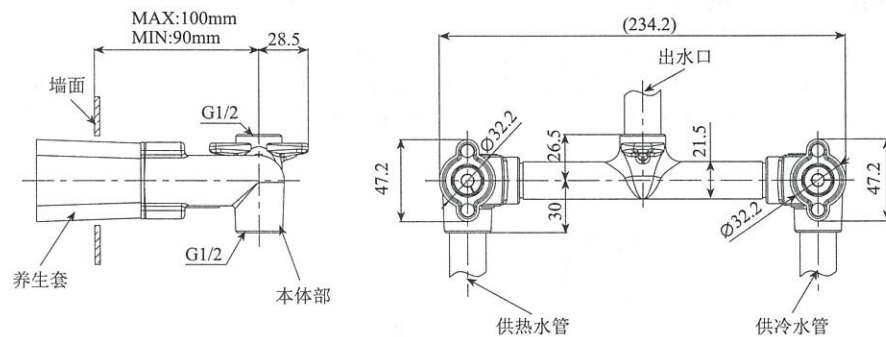


DB253R系列水嘴

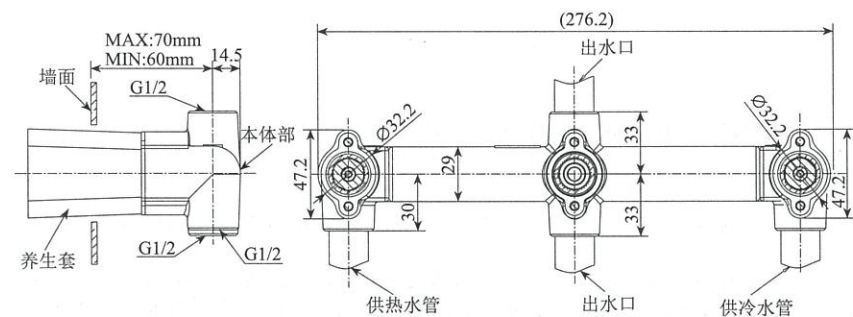


水嘴的安装

DB245、DB245A系列水嘴



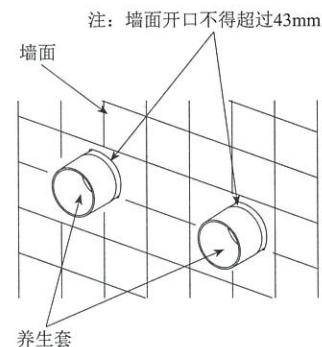
DB246R、DB246AR系列水嘴



※注意:

- 安装埋墙本体时, 请不要将保护套取下。
- 安装时, 请注意埋墙本体的埋入深度请保证完成墙面在保护套上MIN~MAX标志之间。
- 进水管与埋墙本体连接并确认各连接处不漏水再加水泥填料。

(注: DB245、DB245A、DB246R、DB246AR、墙面开方口不得超过50mm。)

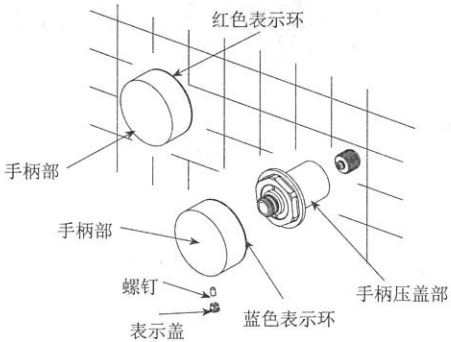


水嘴的安装

3. 手柄部的安装

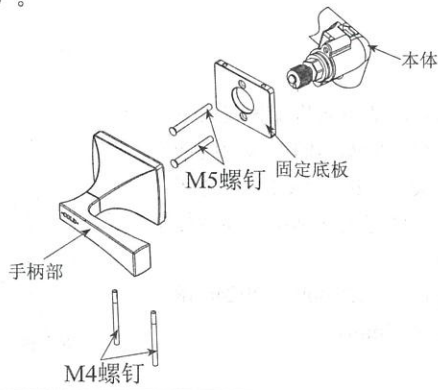
DB252、DB253R系列水嘴

- ①将保护套取下。
- ②将手柄压盖部旋进埋墙本体上，并用扳手紧固到墙面上。
- ③将手柄部套在压盖部的花键接手上，再用螺钉紧固住，最后将表示盖扣到手柄部上。（注：红蓝表示环已扣入手柄里，手柄不要装反，带有红色表示环为热水侧；蓝色表示环为冷水侧；无表示环的为切替手柄。）



DB245、DB245A、DB246R、DB246AR系列水嘴

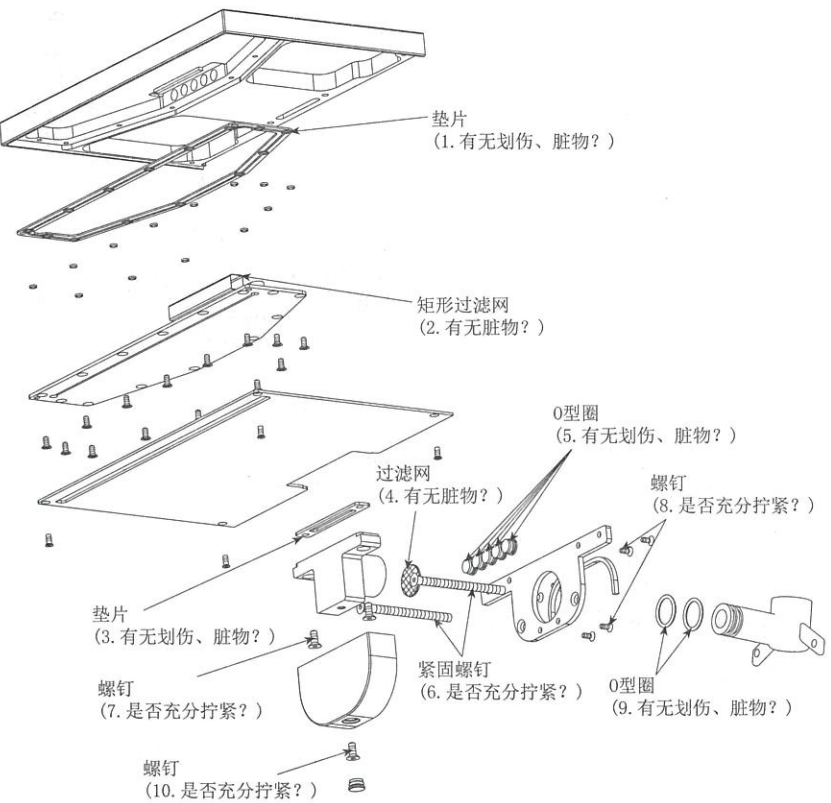
- ①将保护套取下（注：养生套附带的M5螺钉不要废弃）。
- ②将手柄部底座处的M4螺钉和固定底板取下。
- ③用固定养生套的M5螺钉将固定底板固定（注：固定底板侧面带有螺丝孔的面朝上）。
- ④将手柄部套在花键接手上，再用从手柄部取下的M4螺钉，将手柄部紧固住（注：手柄不要装反，带有“COLD”的标记为冷水侧；带有“HOT”的标记为热水侧；无标记的为切替手柄）。



拆卸与检查

现象	检查项目
漏水	1、3、5、9
本体晃动	6、7、8、10
出水不良	2、4

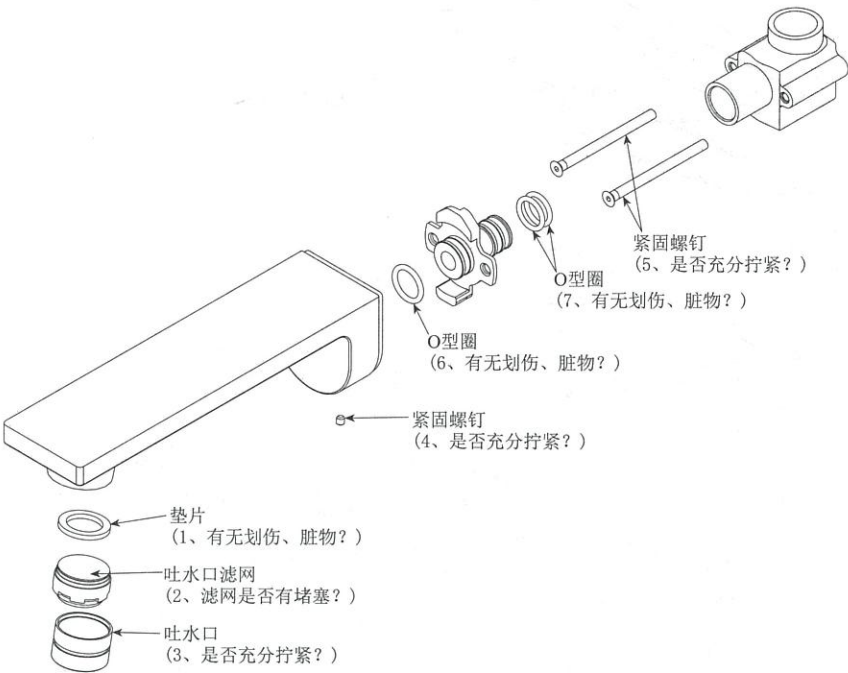
安装后万一出现故障，请按以下要领拆卸。
DBS111系列水嘴



拆卸与检查

现 象	检 查 项 目
漏 水	3、6、7
本 体 晃 动	4、5
出 水 不 良	1、2

安装后万一出现故障，请按以下要领拆卸。

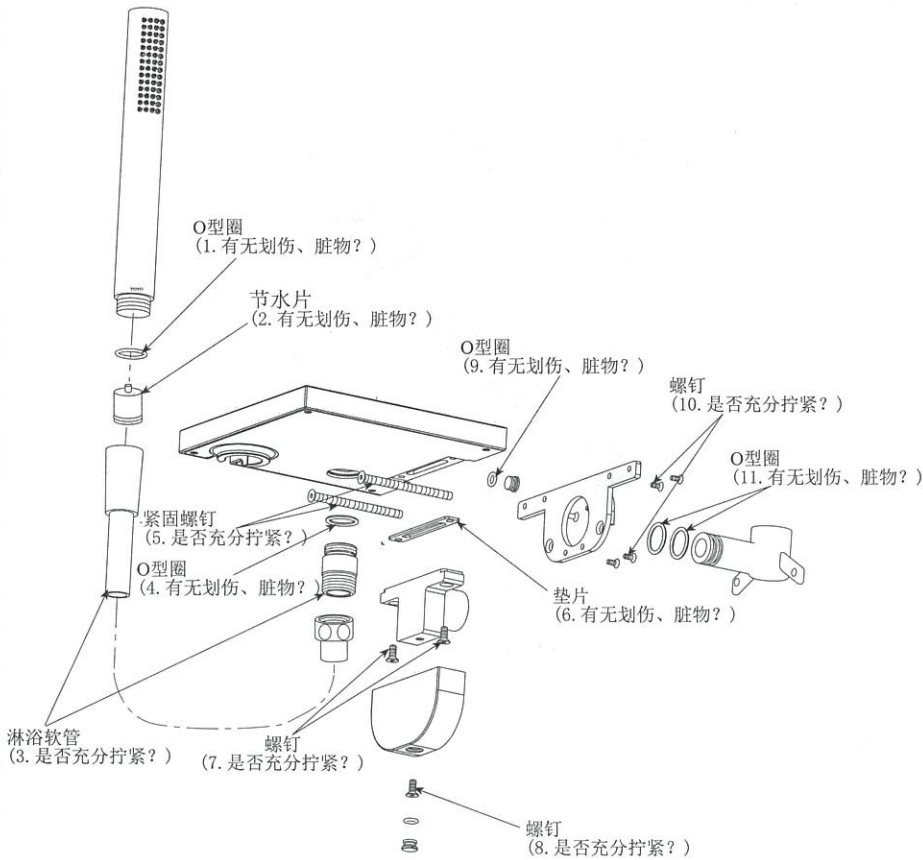


拆卸与检查

现 象	检 查 项 目
漏 水	1、3、4、6、9、11
本 体 晃 动	5、7、8、10
水 流 量 小	2

安装后万一出现故障，请按以下要领拆卸。

DBX125CF系列水嘴

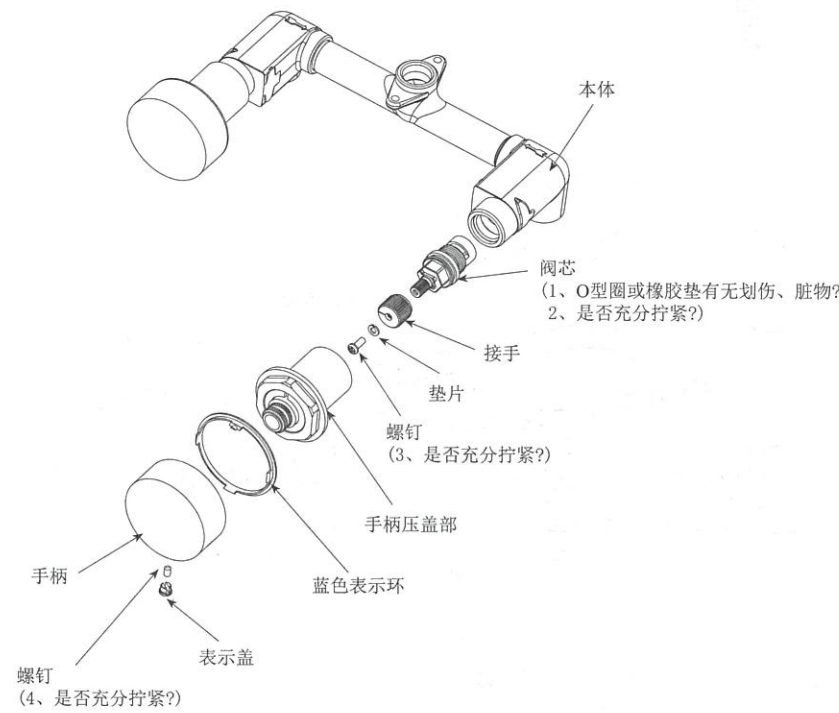


拆卸与检查

现 象	检 查 项 目
水 流 量 小	1
漏 水	1、2
手 柄 晃 动	3、4

安装后万一出现故障，请按以下要领拆卸。

DB252系列水嘴

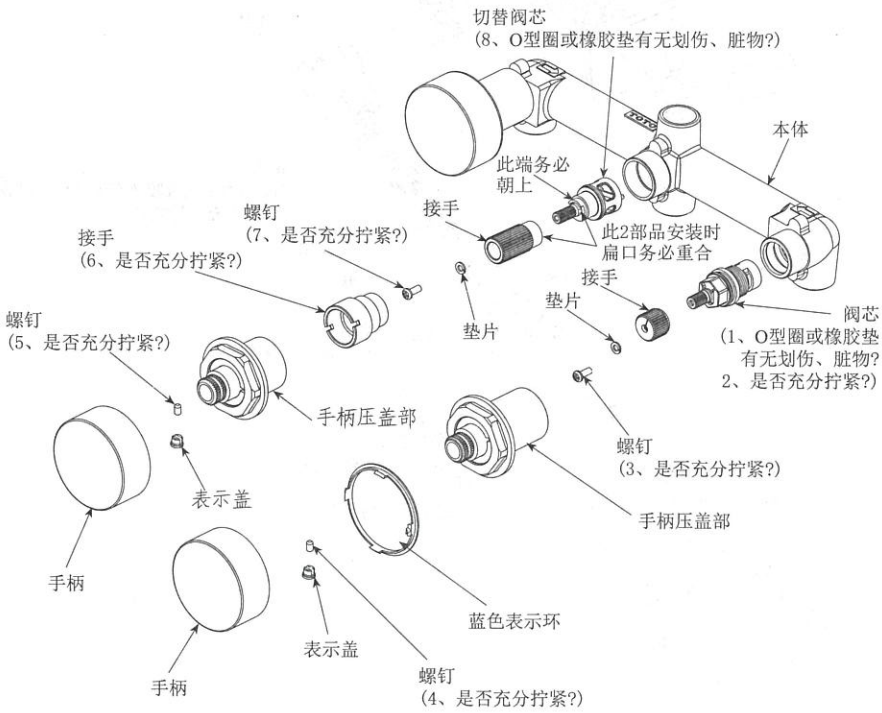


拆卸与检查

现 象	检 查 项 目
水 流 量 小	1
漏 水	1、2、6、8
手 柄 晃 动	3、4、5、7
切 替 不 良	8

安装后万一出现故障，请按以下要领拆卸。

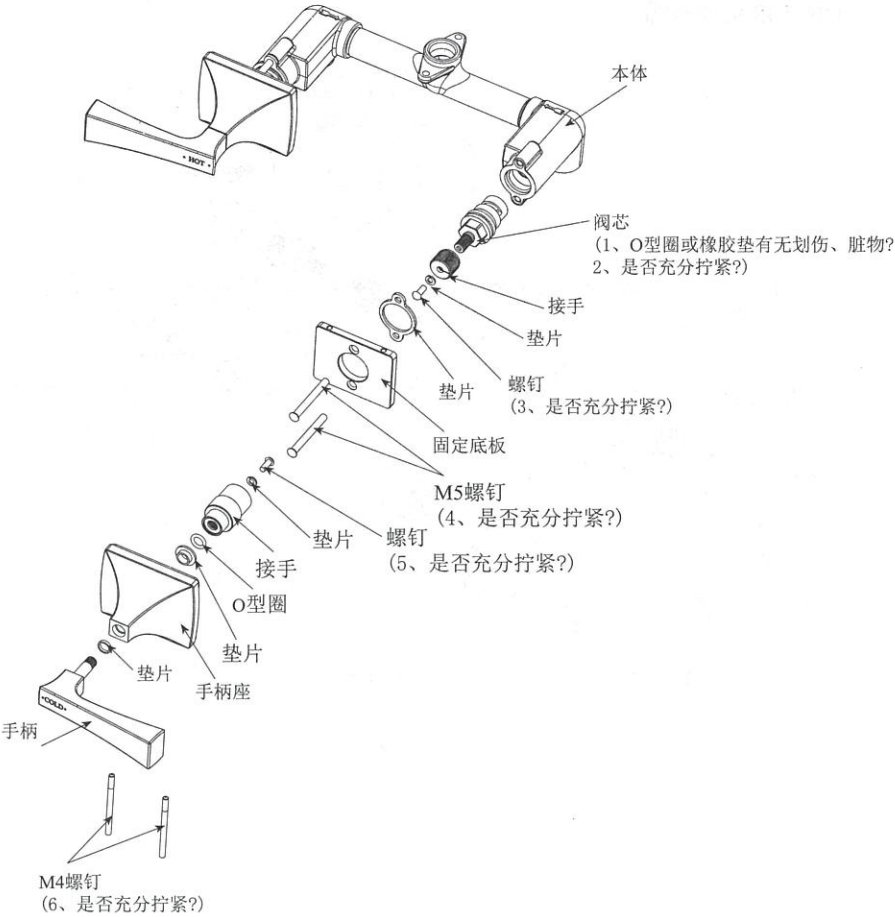
DB253R系列水嘴



拆卸与检查

现 象	检 查 项 目
水 流 量 小	1
漏 水	1、2
手 柄 晃 动	3、4、5、6

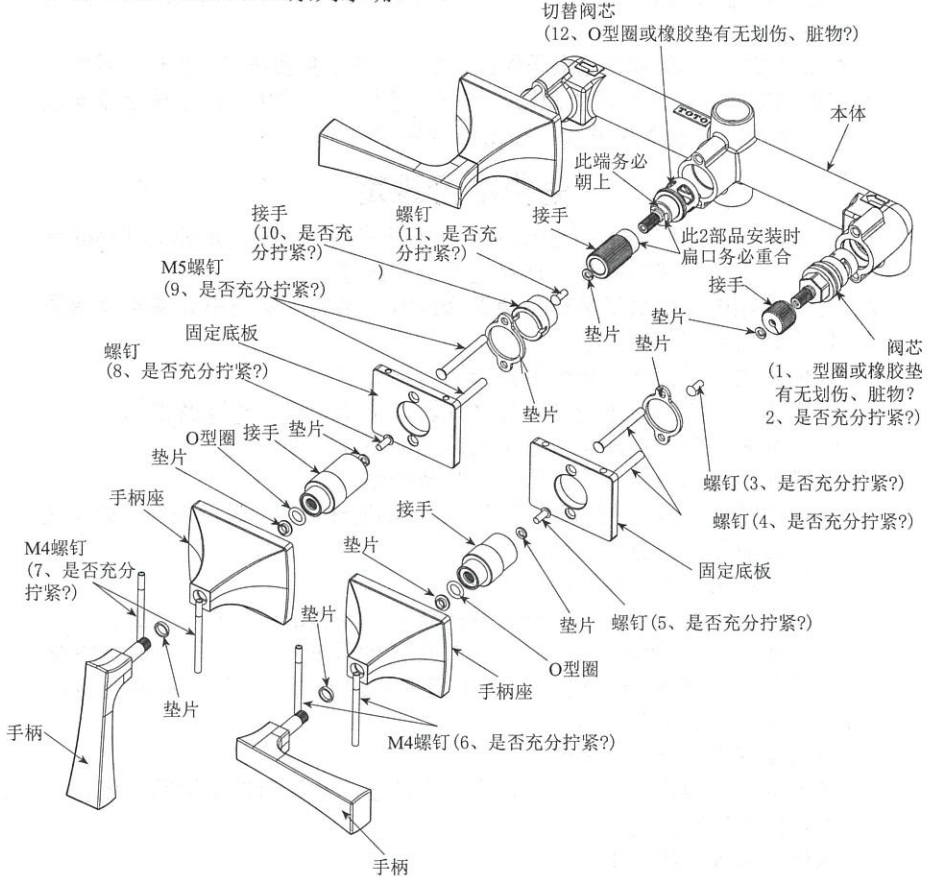
安装后万一出现故障，请按以下要领拆卸。
DB245、DB245A系列水嘴



拆卸与检查

现 象	检 查 项 目
水 流 量 小	1
漏 水	1、2、10、12
手 柄 晃 动	3、4、5、6、7、8、9、11
切 替 不 良	12

安装后万一出现故障，请按以下要领拆卸。
DB246R、DB246AR系列水嘴



水嘴保证书

用 户	
销售店安装店	
购买日	
保修期	自购买日起本体及阀芯保修有效期为5年， 其余部件保修期为1年

* 若上栏内容未记全，该保证书将视为无效。因此请用户购买时对记入内容进行确认。

* 本保证书中的保修项目仅限于保证书中所约束的免费维修项目进行维修。

* 在保修期间，若产品发生故障（漏水、渗漏），请用户向销售店或安装店出示保证书及购买发票、提出修理要求。

免费维修规定

1. 保修期间，在用户正确按说明书、不干贴等指示，使用本公司产品的情况下，本公司将对有故障产品进行免费维修。

2. 在保修期内发生损坏需得到免费修理时，请持本保证书和购买发票委托安装店或销售店办理。

3. 在保期内，下面所列场合的维修为有偿维修。

①使用不当或私自进行的不当修理及改造所造成的故障及损伤。

②安装施工时的不注意或过失造成的故障及损伤。

③安装后又拆移等原因造成的故障及损伤。

④超出使用范围以外的场合下使用本产品所造成的故障及损伤（如家庭用商品作为业务上商品使用。）

⑤砂粒或污物等造成的损伤。

⑥由于日常的维护保养不当造成的肮脏、电镀部分生锈等不良。

⑦由于火灾、地震、水灾、雷击及其他天灾、公害、气害（液化气）、盐害及异常电压、使用指定外的电源（电压、频率）等原因造成的故障及损伤。

⑧本保证书没指定的场合。


⑨本保证书中用户姓名、销售店、安装店、购买日期未填写的场合。

⑩不能出示购买发票的场合。

4. 本保证书仅适用于中国国内。

5. 本保证书丢失不补，请顾客妥善保管。

合格证

检验员: 

执行标准：GB18145-2014
GB/T 23447-2009(适用于DBX125CF)
Q/DTJQ.007 (适用于DBS111)

产品型号：见包装箱上的标签
产品名称：见包装箱上的标签
生产日期：见包装箱上的标签
组装工厂：东陶(大连)有限公司
电 话：(0411) 87624383
厂 址：大连经济技术开发区东北二街17号

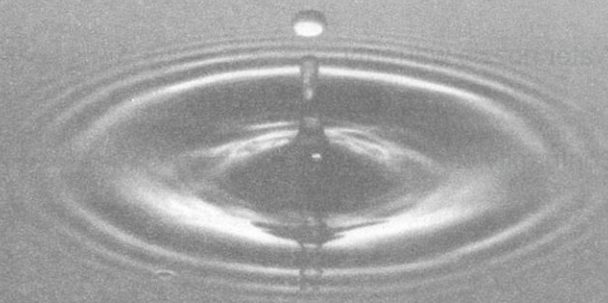
东陶(中国)有限公司
售后服务全国免费电话：800-820-9787(固定电话拨打)
400-820-9787(手机电话拨打)

TOTO

安装完成后，本说明书务必交由客户保存。

Product Instructions

TOTO



OG357RY

Contents

Detailed list	1、 2
Attentions in use	3
Combinational installation completion figure -	4~11
Installation completion figure	12~18
Water nozzle installation	19~24
Removal and inspection	25~31
Water nozzle warranty	32
Conformity certificate	33

Detailed list

DBS111, DBX125CF

Main body part	1set
Fastening screw	1 set
Decorative cover	1 set
Screw	1 set
Plug cover	1 set
Shower	1 set (in case of DBX125CF)
Shower hose	1 set (in case of DBX125CF)

DBS115

Main body	1 set
Fastening screw	1 set
Connecting part	1 set

Detailed list

DB252, DB253R

Main body part -----	1set
Handle part -----	2 sets (3 sets of DB253R)
Fixing receiving hand -----	2 sets (3 sets of DB253R)
Instruction -----	1 set

DB245, DB245A, DB246R, DB246AR

Main body part -----	1set
Handle part -----	2 sets (3 sets of DB246R,DB246AR)
Instruction -----	1 set

Attentions in use

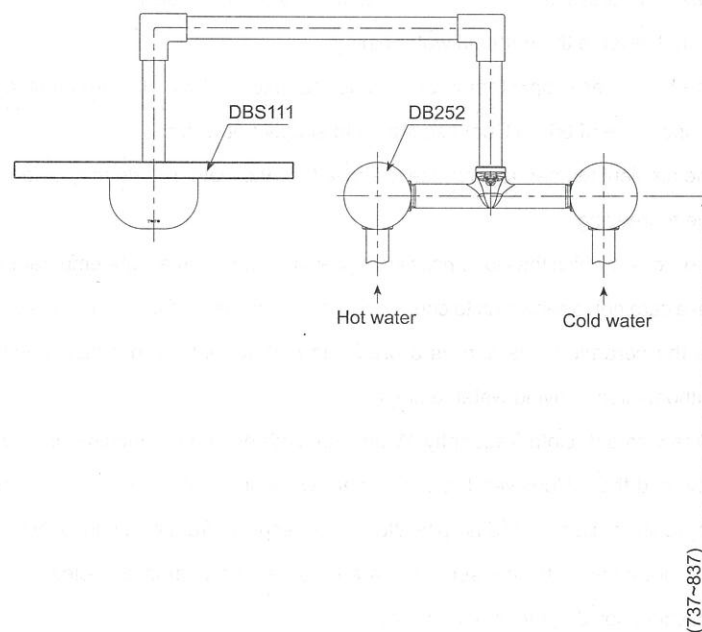
* To enable the water nozzle to work safely, be sure to read *attentions in use* before use so as to use the water nozzle correctly.

1. Cold water supply * hot water supply pressure
Minimum pressure ----- 0.05 MPa (flow pressure)
Maximum pressure ----- 1.0 MPa (static pressure)
2. Do not reverse the hot*cold water piping.
3. The hot water supply temperature must not exceed 85℃. It is suggested to use the temperature of 60±5℃ not use steam to supply hot water.
4. The ambient temperature for use is above 0℃, the water nozzle may deform and crack due to freezing.
5. The side on which the water nozzle supplies hot water is in a high-temperature condition. Take care not to allow skin to contact with the hardware surface directly to avoid scalding.
6. As the ceramic valve core is a precision component, do not disassemble without authorization to avoid water leakage.
7. Wipe with soft cloth frequently. Wipe with cloth dipped in machine oil or vehicle wax now and then. However, the component will lose its gloss or rust when adhering to any resin component. Please pay attention to keeping it from adhering to resin component.
8. It is not allowed to use such detergent containing coarse particles as abstergent, polishing powder, etc. or nylon scrubber.
9. It is not allowed to use any acidic detergent as it may corrode the plating. If any ceramic tile is washed using any acidic detergent, it is imperative to wash the ceramic tile and water nozzle sufficiently with water.
10. If it is kept unused for a long time, the water nozzle may rust inside and outside, resulting in being unable to use.
11. With the product design being updated constantly, the physical object may be different from the figure. However, the basic principle is the same.

Combinational installation completion figure

Recommended DB252 combination

① DBS111 + DB252



The dimensional unit in the above figure is mm

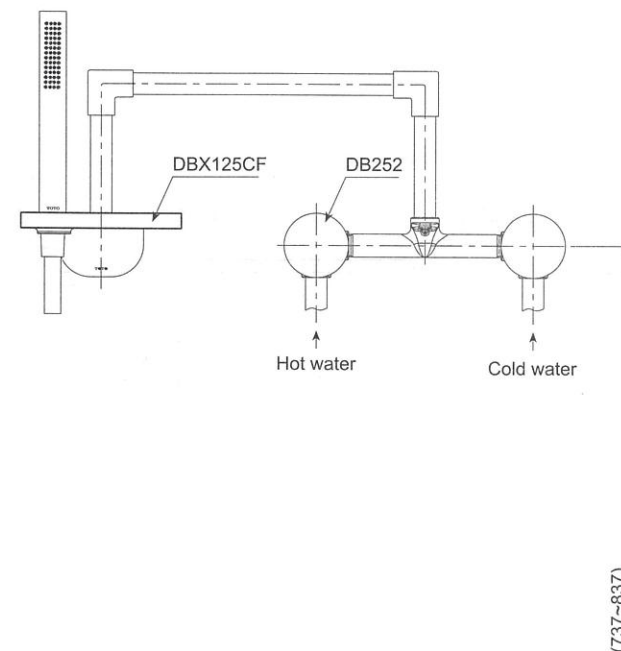
Ground or bath tube bottom surface

※ The dimension in () is the recommended installation dimension. However, free combination and installation can be made according to the bathroom space size.

Combinational installation completion figure

Recommended DB252 combination

② DBX125CF + DB252



The dimensional unit in the above figure is mm

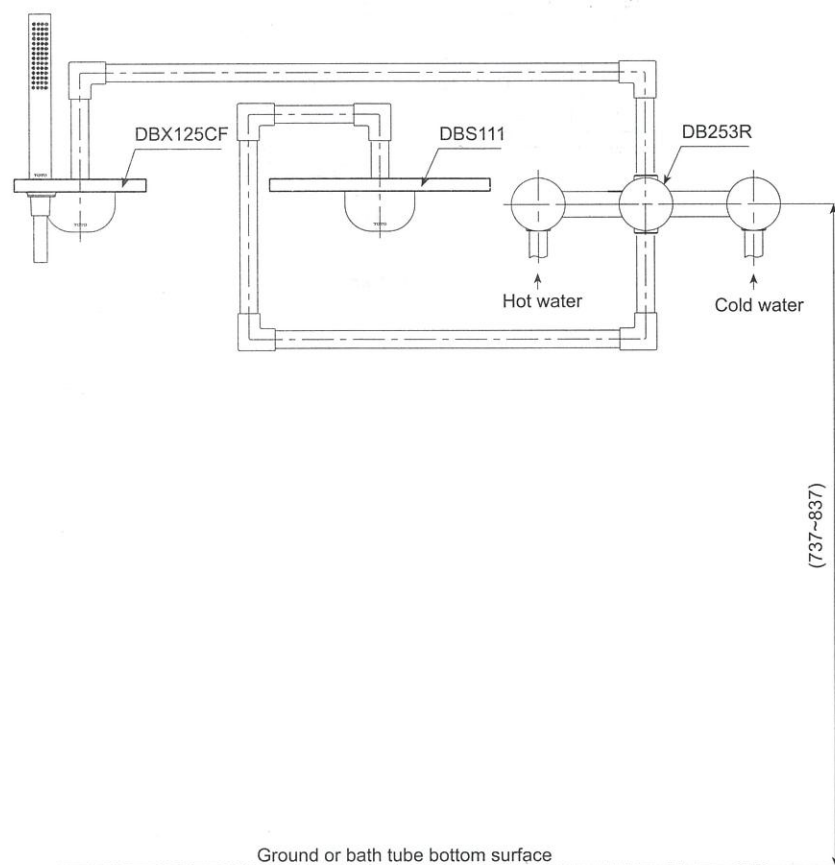
Ground or bath tube bottom surface

※ The dimension in () is the recommended installation dimension. However, free combination and installation can be made according to the bathroom space size.

Combinational installation completion figure

Recommended DB253R combination

① DBX125CF + DBS111 + DB253R

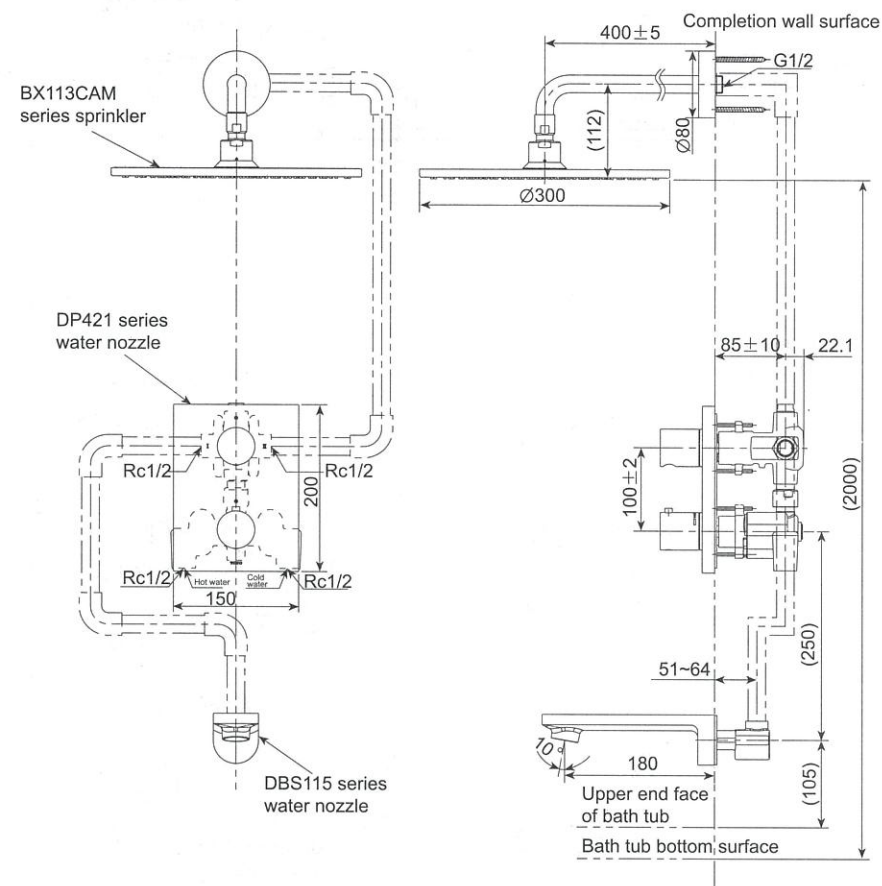


※The dimension in () is the recommended installation dimension. However, free combination and installation can be made according to the bathroom space size.

Combinational installation completion figure

Recommended DBS115 combination

① DBX113CAM/DP421 + DV421/DBS115

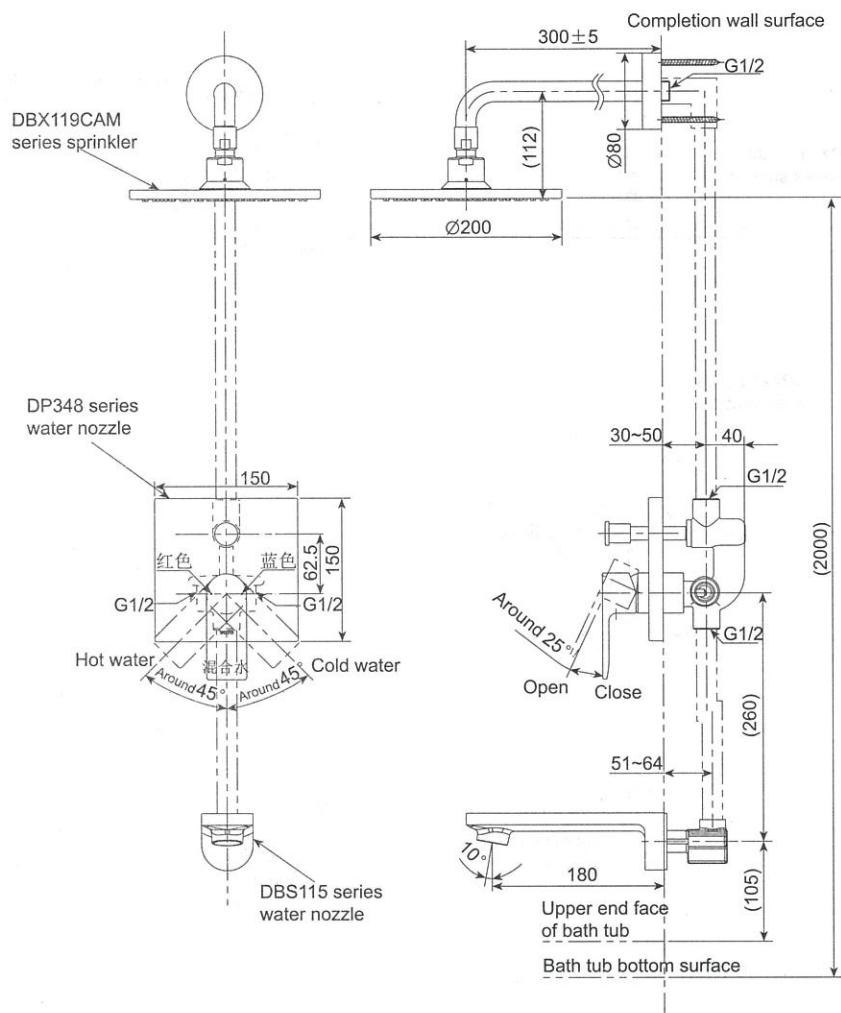


※The dimension in () is the recommended installation dimension. However, free combination and installation can be made according to the bathroom space size.

Combinational installation completion figure

Recommended DBS115 combination

② DBX119CAM/DP348 + DV309-5R/DBS115



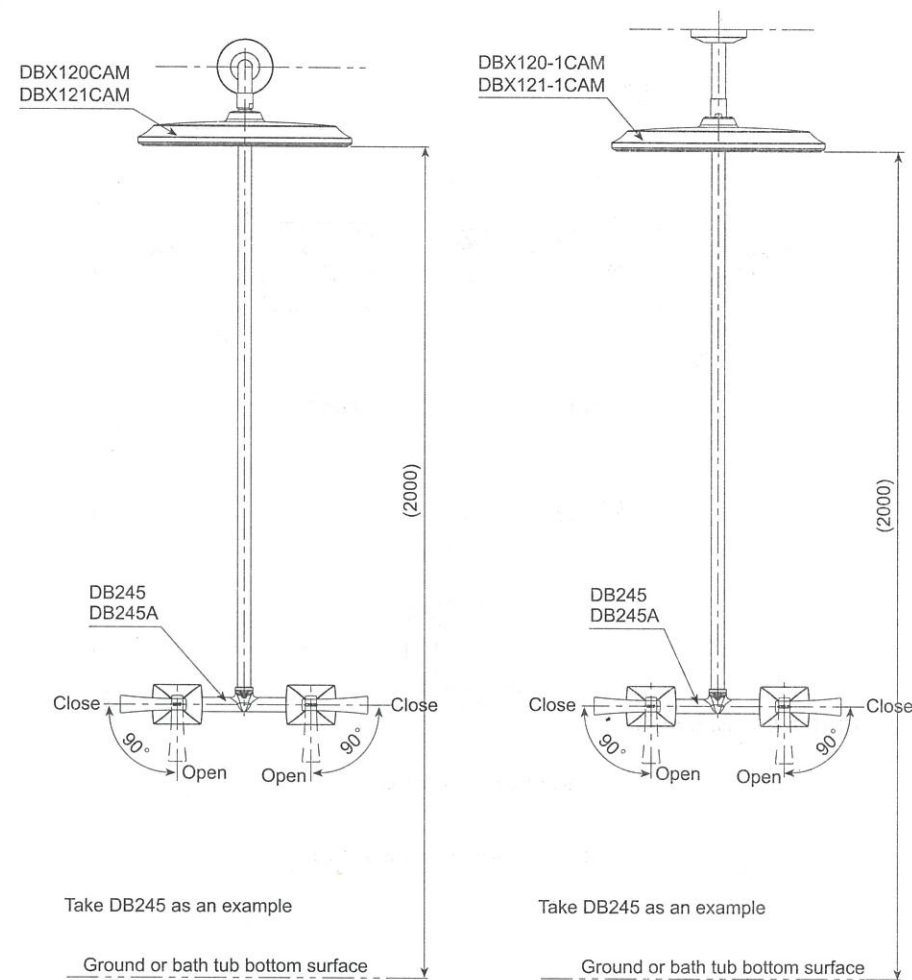
※The dimension in () is the recommended installation dimension. However, free combination and installation can be made according to the bathroom space size.

Combinational installation completion figure

Recommended DB245, DB245A combination

① DBX120CAM/DBX121CAM + DB245/DB245A

② DBX120-1CAM/DBX121-1CAM + DB245/DB245A

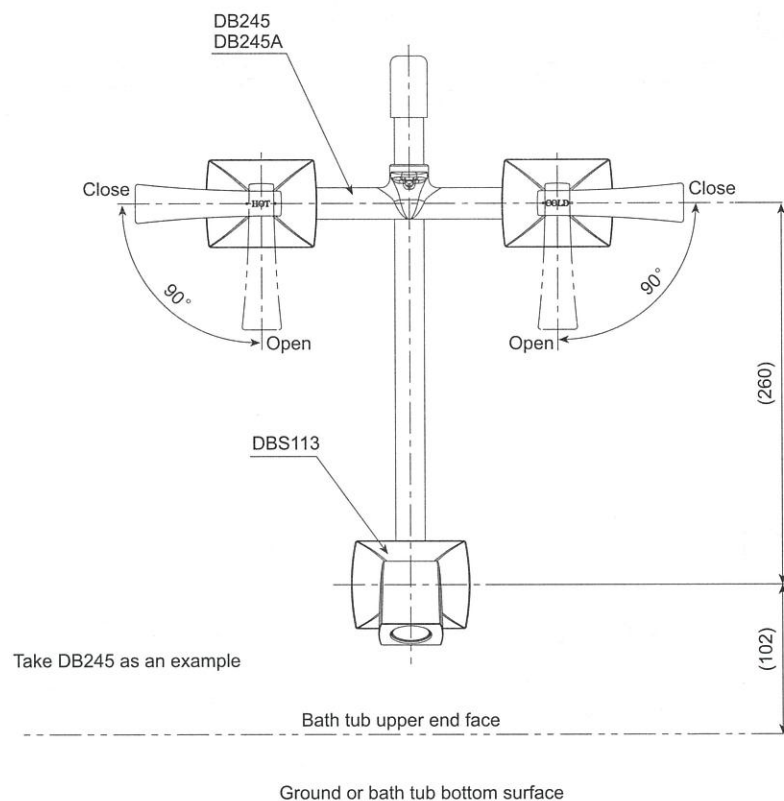


※The dimension in () is the recommended installation dimension. However, free combination and installation can be made according to the bathroom space size.

Combinational installation completion figure

Recommended DB245, DB245A combination

③ DBS113 + DB245/DB245A



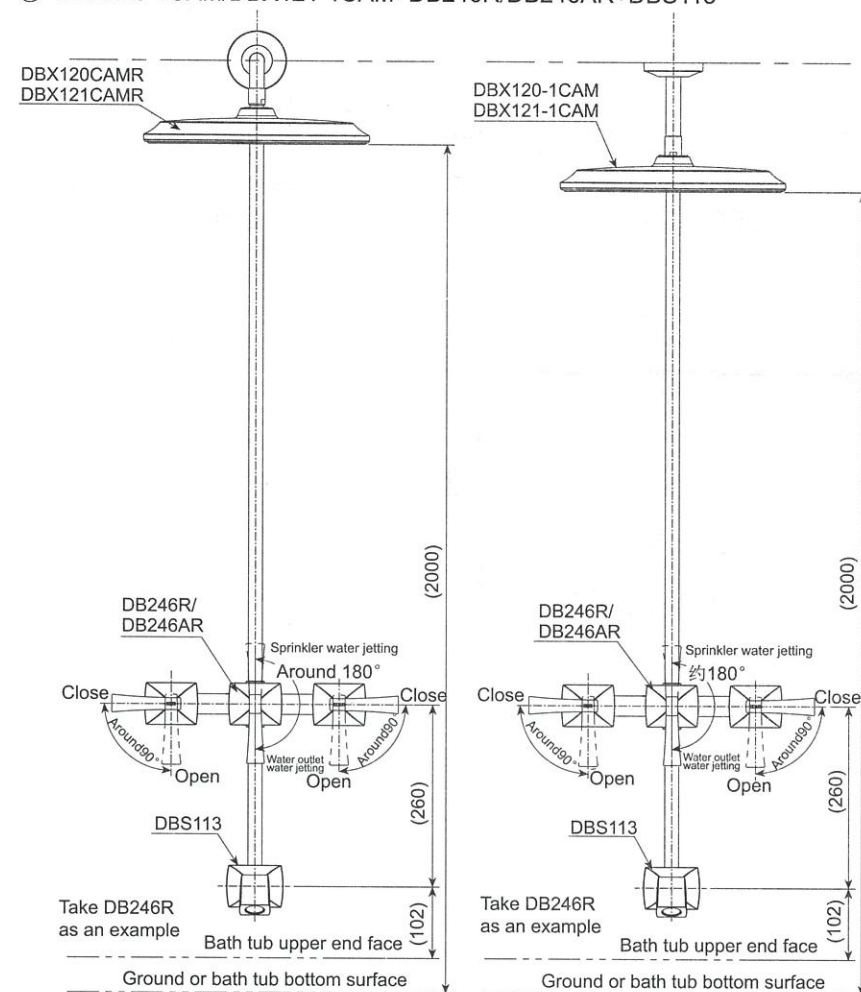
※ The dimension in () is the recommended installation dimension. However, free combination and installation can be made according to the bathroom space size.

Combinational installation completion figure

Recommended DB246R, DB246AR combination

① DBX120CAMR/DBX121CAMR+DB246R/DB246AR+DBS113

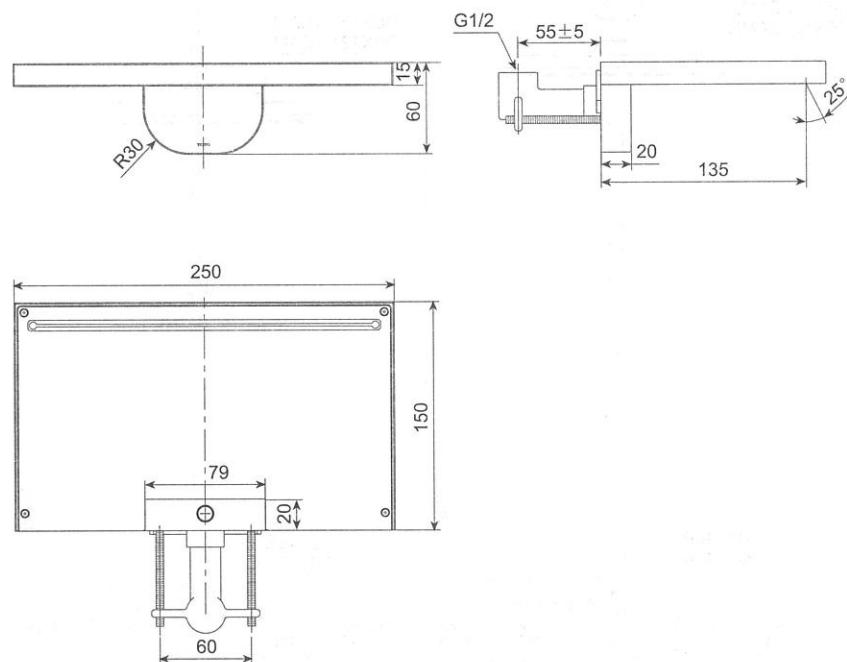
② DBX120-1CAM/DBX121-1CAM+DB246R/DB246AR+DBS113



※ The dimension in () is the recommended installation dimension. However, free combination and installation can be made according to the bathroom space size.

Installation completion figure

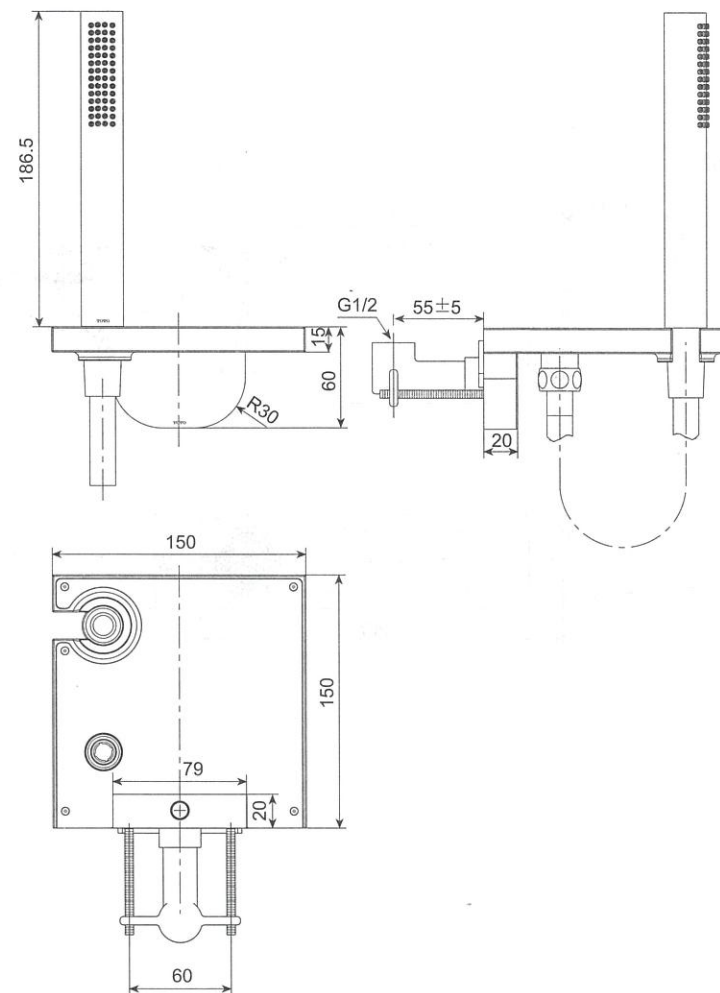
DBS111 series water nozzle



※What is contained in () is the suggested installation dimension. The unit in the above figure is mm.

Installation completion figure

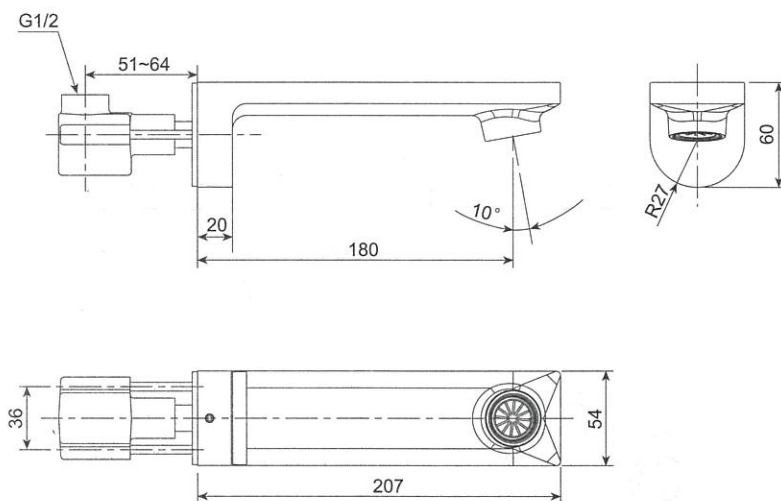
DBX125CF series water nozzle



※What is contained in () is the suggested installation dimension. The unit in the above figure is mm.

Installation completion figure

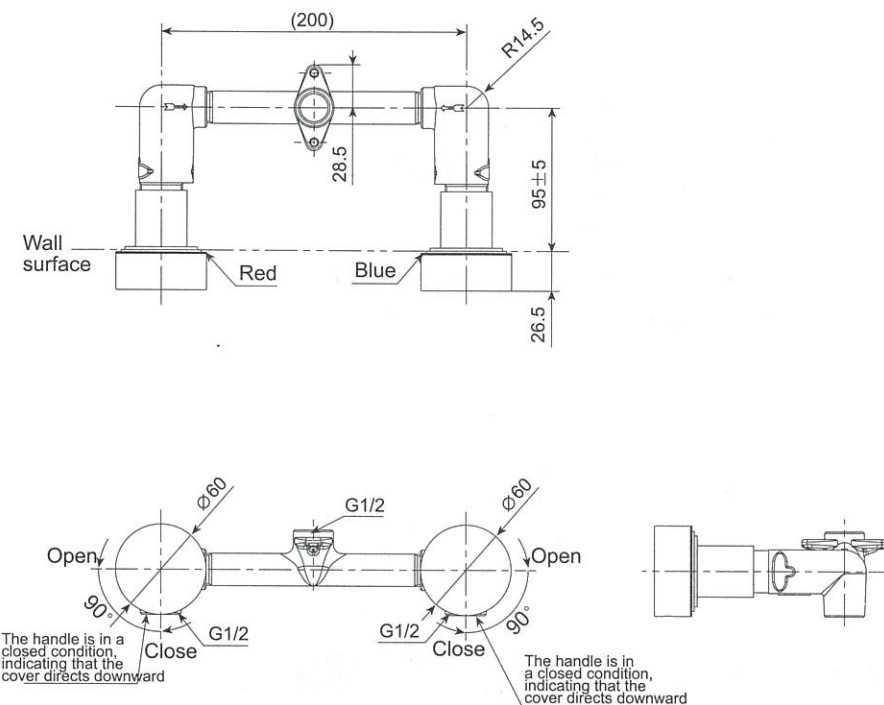
DBS115CF series water nozzle



※What is contained in () is the suggested installation dimension. The unit in the above figure is mm.

Installation completion figure

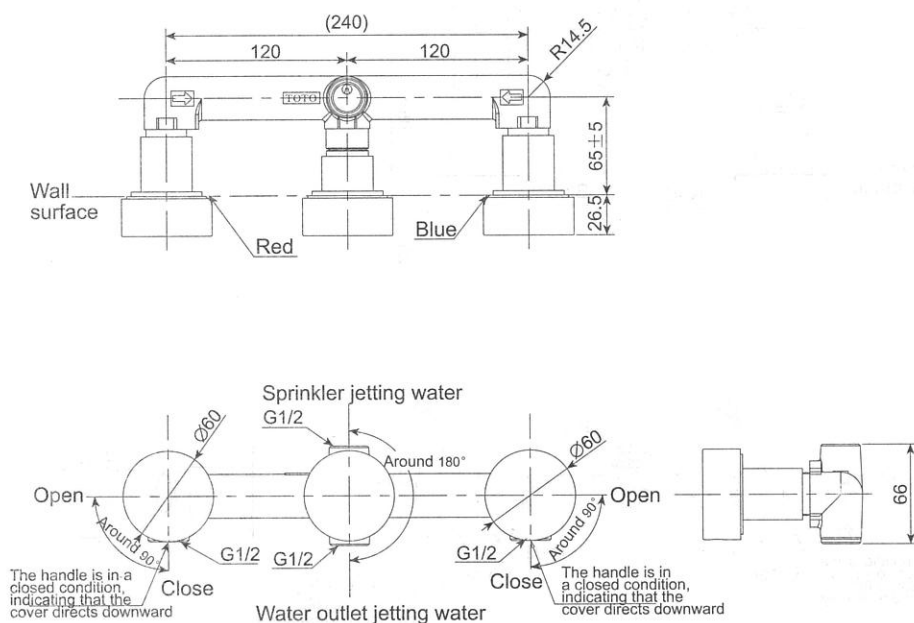
DB252 series water nozzle



※What is contained in () is the suggested installation dimension. The unit in the above figure is mm.

Installation completion figure

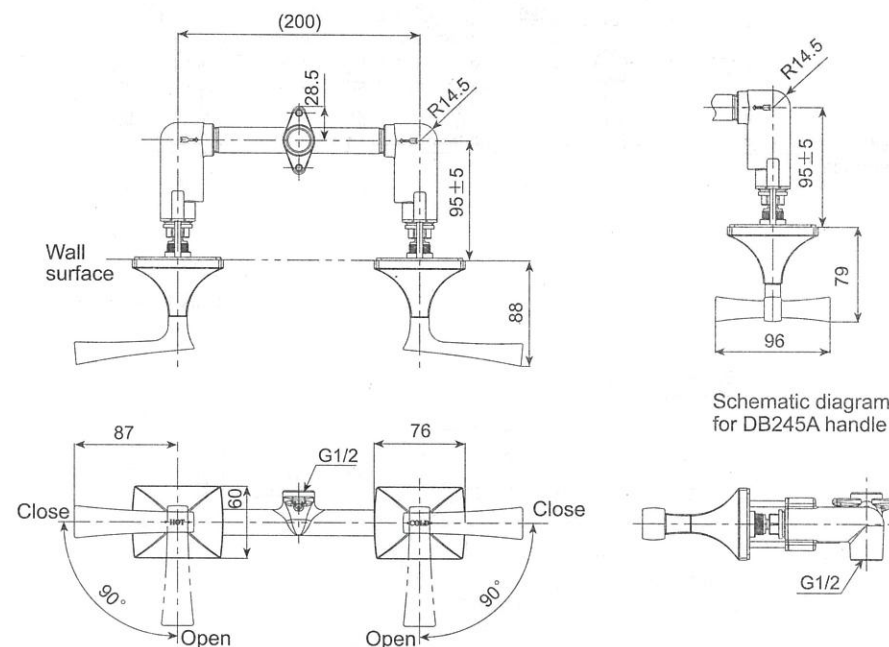
DB253R series water nozzle



※What is contained in () is the suggested installation dimension. The unit in the above figure is mm.

Installation completion figure

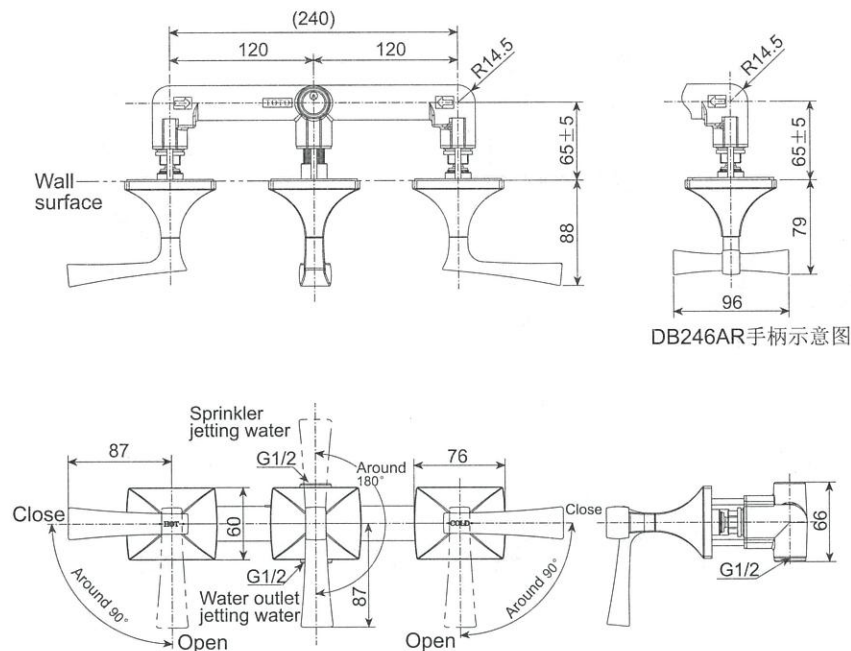
DB245, DB245A series water nozzle



※What is contained in () is the suggested installation dimension. The unit in the above figure is mm.

Installation completion figure

DB246R, DB246AR series water nozzle



DB246AR手柄示意图

※What is contained in () is the suggested installation dimension. The unit in the above figure is mm.

Water nozzle installation

1. Cleaning in the water supply pipe

Before installation, be sure to remove by washing such foreign matters as dust, sand, etc. in the water supply pipe; in installation, it is imperative to also take care sufficiently not to allow such foreign matters as mud and sand, etc. to enter into the water nozzle or the water supply pipe.

2. Installation of main water nozzle body

① As shown in Fig. 1, connect properly the main water nozzle body and corresponding pipe beforehand and then cut a slot on the wall surface by referring to the dimensions as shown in the figure.

Note: a. Before water nozzle installation, be sure to do a water test to prevent water leakage, etc.

b. In cutting slot, be sure to meet the dimensions as shown in the figure.

② As shown in the figure, use such filling as cement, etc. to install the product in the wall.

Note: a. The exposed part from wall must not contact with such building materials as cement, etc.

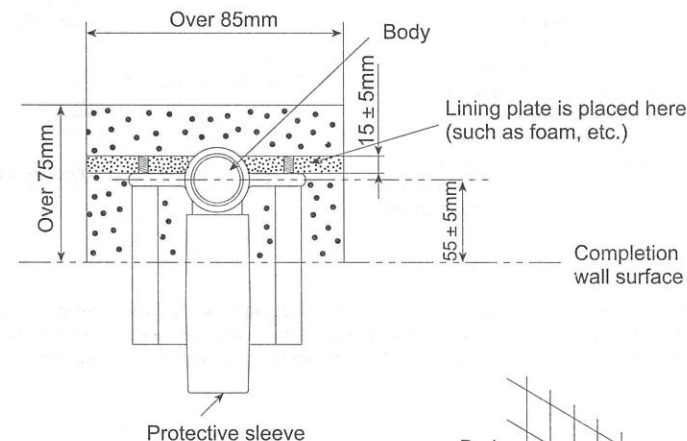
b. In installation, the product should be kept perpendicular to the wall surface.

③ Adjust the main water nozzle part to the right position and install onto the fixed receiving hand (the O-ring is properly install and no free disassembly is allowed). The fixed receiving hand (the O-ring is properly install and no free disassembly is allowed) should be sufficiently inserted into the main water nozzle body part. Just tighten by using fastening screws.

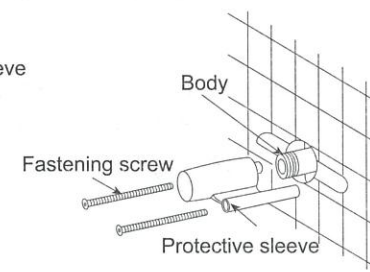
In case of DBS115 water nozzle:

③ Adjust the receiving hand (the O-ring is properly install and no free disassembly is allowed) to the right position and install onto the joint exposed from the body buried in wall. The receiving hand (the O-ring is properly install and no free disassembly is allowed) should be sufficiently inserted into the main water nozzle part. Just tighten with fastening screws.

DBS111, DBX125CF series water nozzle:

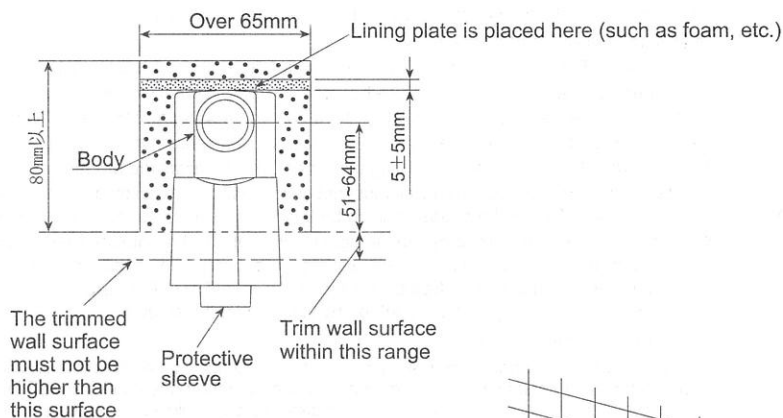


※ Note: For protective nozzles with a protective sleeve, remove the protective sleeve and loosen the fastening screws to pull the protective sleeve out. (After installation, the protective sleeve will have no use any more.)

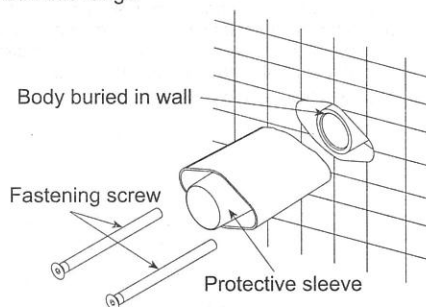


Water nozzle installation

DBS115 series water nozzle

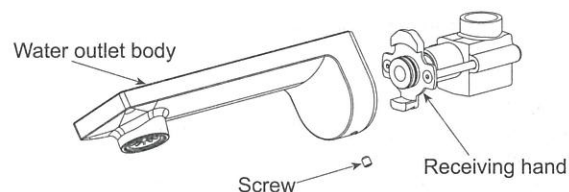


※ Note: For protective nozzles with a protective sleeve, remove the protective sleeve and loosen the fastening screws to pull the protective sleeve out. (After installation, the protective sleeve will have no use any more. Please keep the fastening screws for use in the installation that will occur soon.)



In case of DBS115 water nozzle:

As shown in the figure below, screw the water outlet body part into the fixed receiving hand (the O-ring has been installed and no free disassembly is allowed) in an inclined way and to the body until getting stuck vertically. Just screw in screws from the underneath of the body to press against.

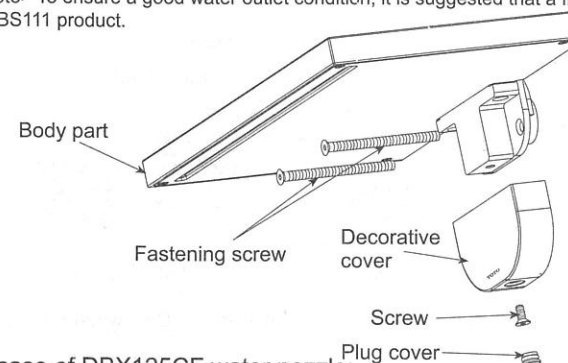


Water nozzle installation

In case of DBS111 water nozzle:

As shown in the figure below, install the body part onto the receiving hand exposed in the wall. Then after directing the fastening screws at corresponding screw thread mouth in the wall through the lining plate, tighten the screws sufficiently. Then fix the decorative cover at the lower end onto the body through screws. Finally put the plug cover on.

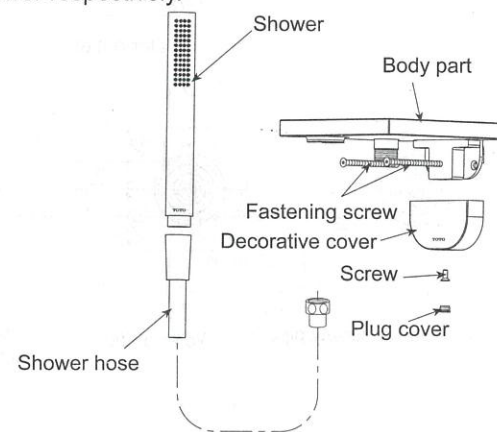
<Note> To ensure a good water outlet condition, it is suggested that a flow over 20L/min. should be used for BS111 product.



In case of DBX125CF water nozzle:

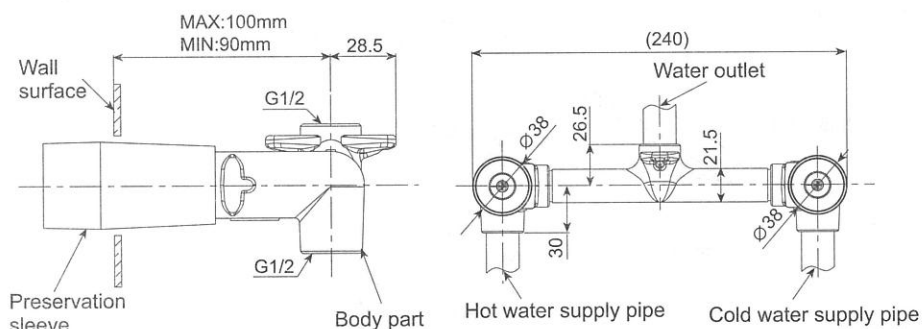
As shown in the figure below:

1. Install the body part onto the receiving hand exposed in the wall.
2. After directing the fastening screws at corresponding screw thread mouth in the wall through the lining plate, tighten the screws sufficiently.
3. Fix the decorative cover at the lower end onto the body through screws. Finally put the plug cover on.
4. Connect the two ends of the shower hose with the receiving hand of the body part, shower respectively.

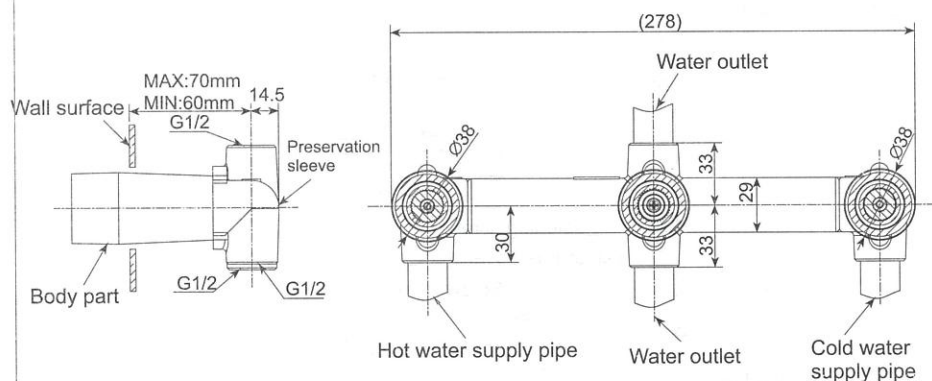


Water nozzle installation

DB252 series water nozzle

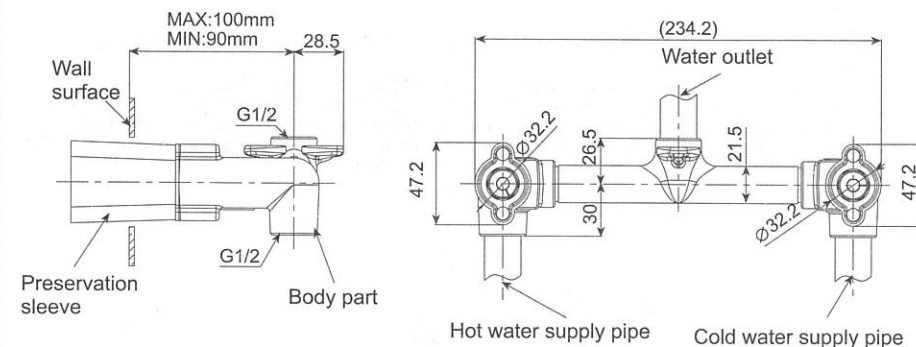


DB253R series water nozzle

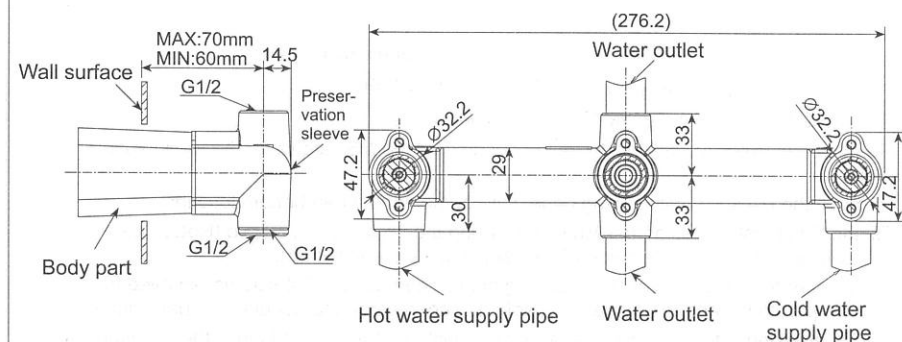


Water nozzle installation

DB245, DB245A series water nozzle



DB246R、DB246AR系列水嘴

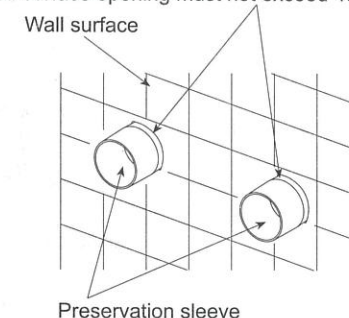


Note: The wall surface opening must not exceed 43mm.

※ Please note:

- When installing the body buried in wall, do not remove the protective sleeve.
- In installation, please note the burial depth of the body buried in wall. Please ensure the completion wall surface to be between the markings MIN-MAX on the protective sleeve.
- Connect the water inlet pipe and the body buried in wall and confirm that no water leaks from different connecting locations. Then add cement filling.

(Note: DB245, DB245A, DB246R, DB246AR The wall surface opening should not exceed 50mm)

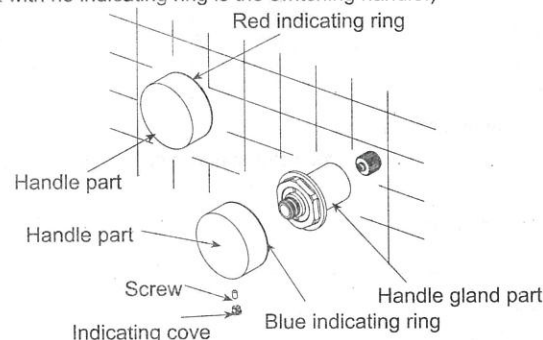


Water nozzle installation

3. Handle part installation

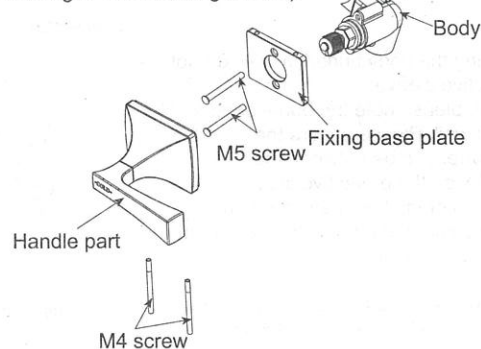
For DB252, DB253R series water nozzle

- ① Remove the protective cover.
- ② Screw the handle gland part in the body buried in wall. Fasten onto the wall surface by using a wrench.
- ③ Put the handle part on the spline receiving hand of the gland part. Then use screw to fasten. Finally, put the indicating cover on the handle part. (Note: The appearance of red and blue colors indicates that the ring has been snapped in the handle. Do not reverse the handle. The indicating ring with a red color is the hot water side; the blue indicating ring is the cold water side; the part with no indicating ring is the switching handle.)



DB245, DB245A, DB246R, DB246AR series water nozzle

- ① Remove the protective sleeve (Note: Do not discard the M5 screws for the preservation sleeve).
- ② Remove the M4 screws and fixing base plate at the handle part bottom location.
- ③ Fix the fixing plate by using the M5 screws fixing the preservation sleeve (Note: The surface with screw holes on the side of the fixing base plate faces up).
- ④ Put the handle part on the spline receiving hand. Then use the M4 screws removed from the handle part to fasten the handle part (Note: Do not reverse the handle. The part with a "COLD" marking is the cold water side; the part with a "HOT" marking is the hot water side; the part with no marking is the switching handle).

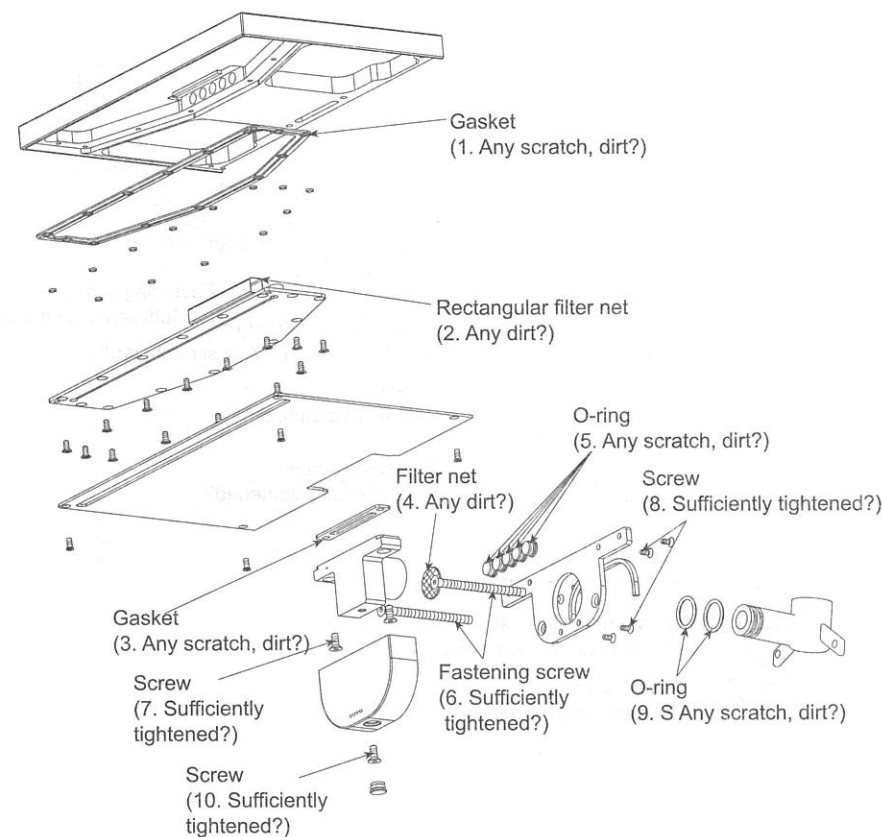


Removal and Inspection

Phenomenon	Inspecting items
Water leakage	1、3、5、9
The body sways	6、7、8、10
The water outlet is poor	2、4

In case of any failure after installation, please remove according to the following main points.

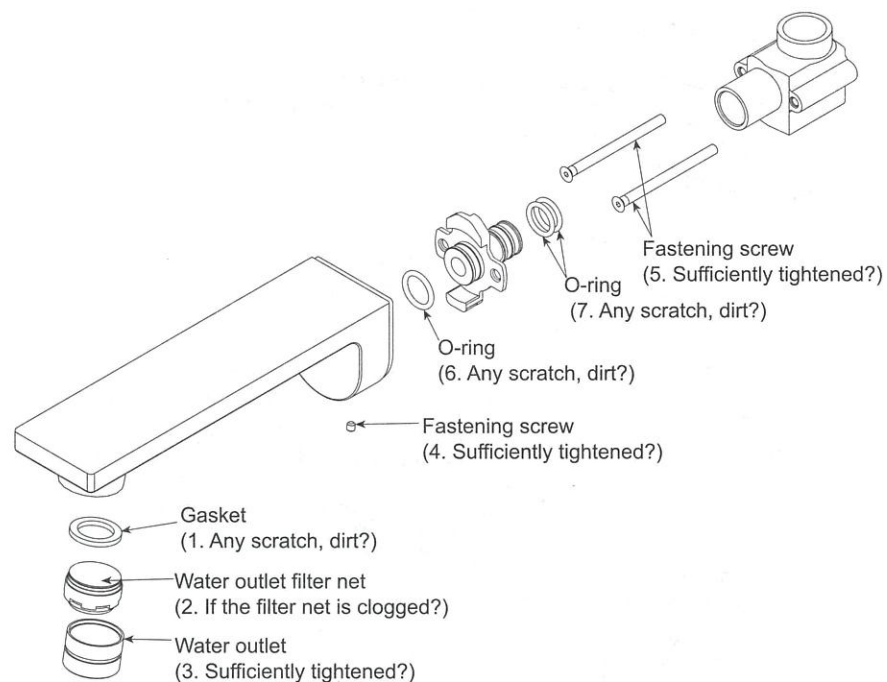
DBS111 series water nozzle



Removal and Inspection

Phenomenon	Inspecting items
Water leakage	3、6、7
The body sways	4、5
The water outlet is poor	1、2

In case of any failure after installation, please remove according to the following main points.

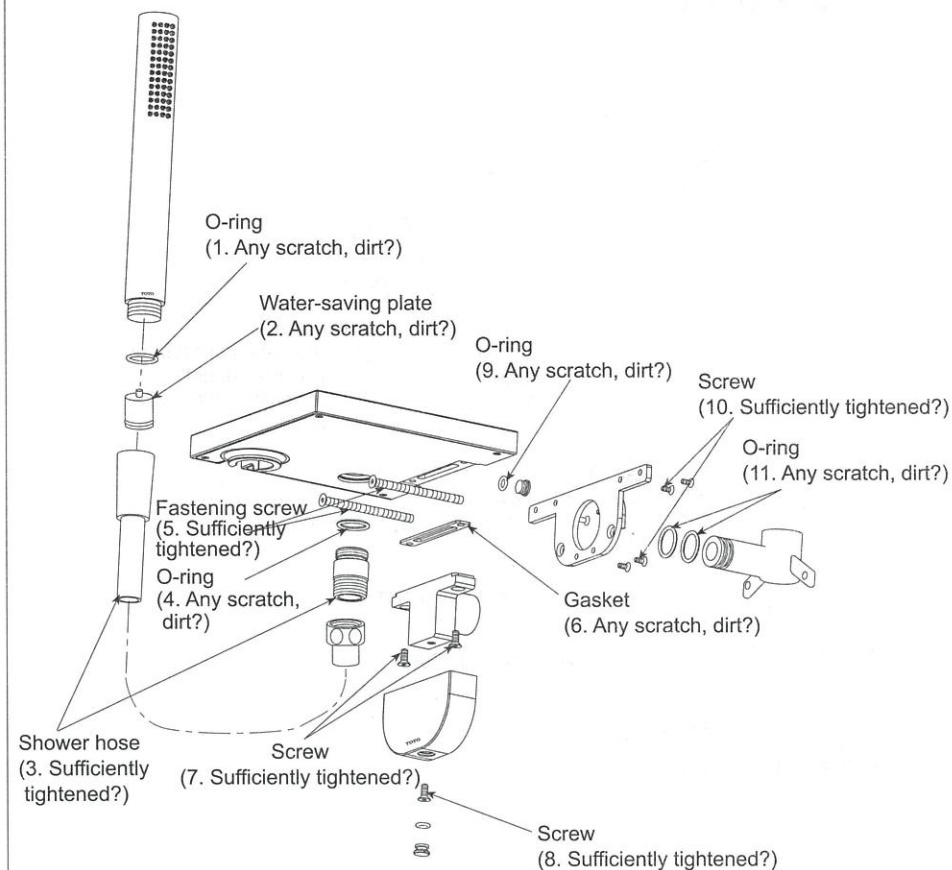


Removal and Inspection

Phenomenon	Inspecting items
Water leakage	1、3、4、6、9、11
The body sways	5、7、8、10
The water flow is small	2

In case of any failure after installation, please remove according to the following main points.

DBX125CF series water nozzle

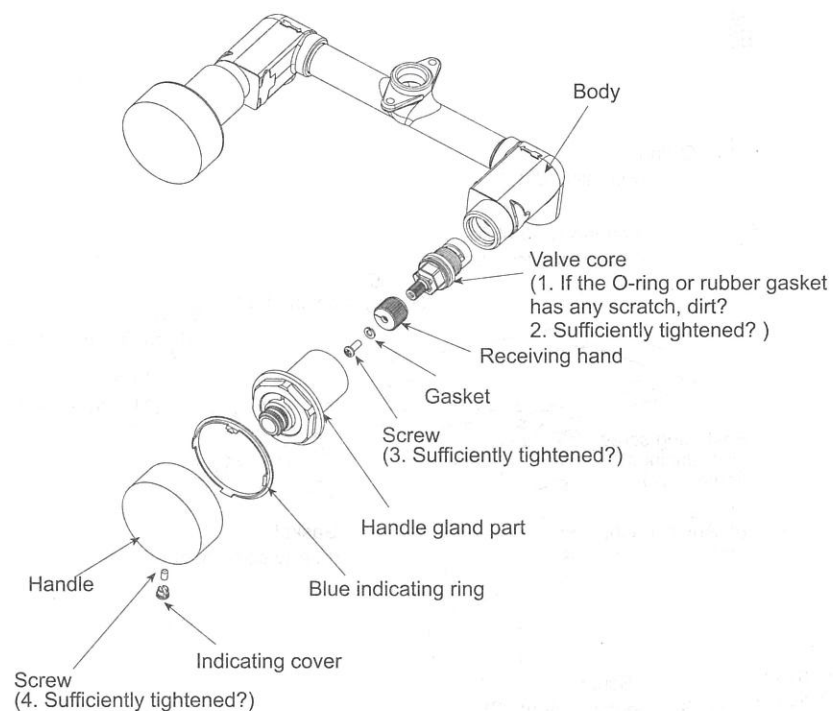


Removal and Inspection

Phenomenon	Inspecting items
The water flow is small	1
Water leakage	1、2
The handle sways	3、4

In case of any failure after installation, please remove according to the following main points.

DB252 series water nozzle

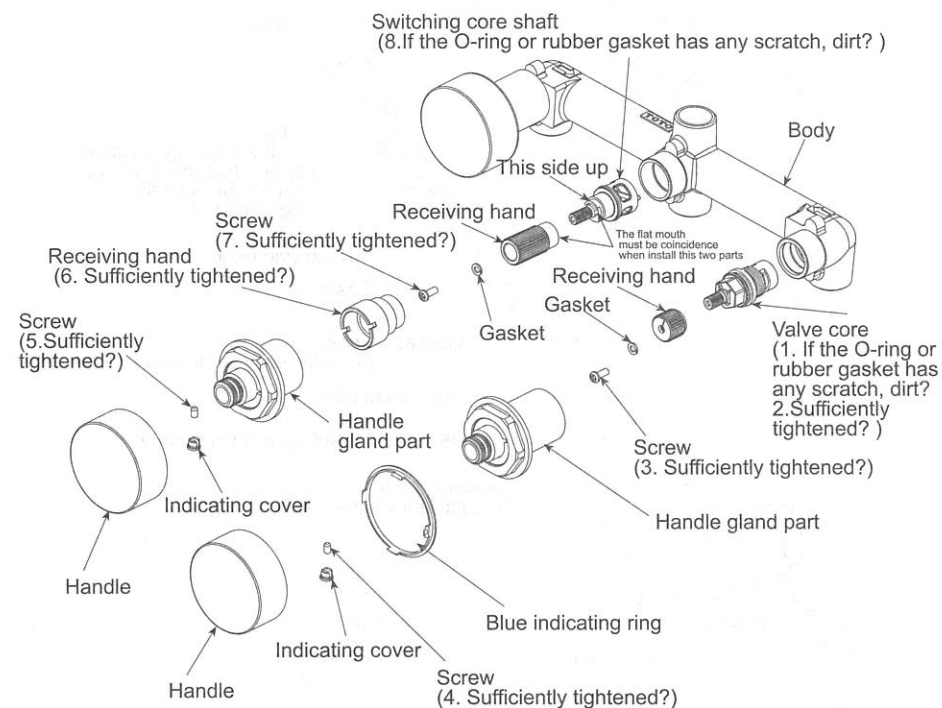


Removal and Inspection

Phenomenon	Inspecting items
The water flow is small	1
Water leakage	1、2、6、8
The handle sways	3、4、5、7
Switching is poor	8

In case of any failure after installation, please remove according to the following main points.

DB253R series water nozzle

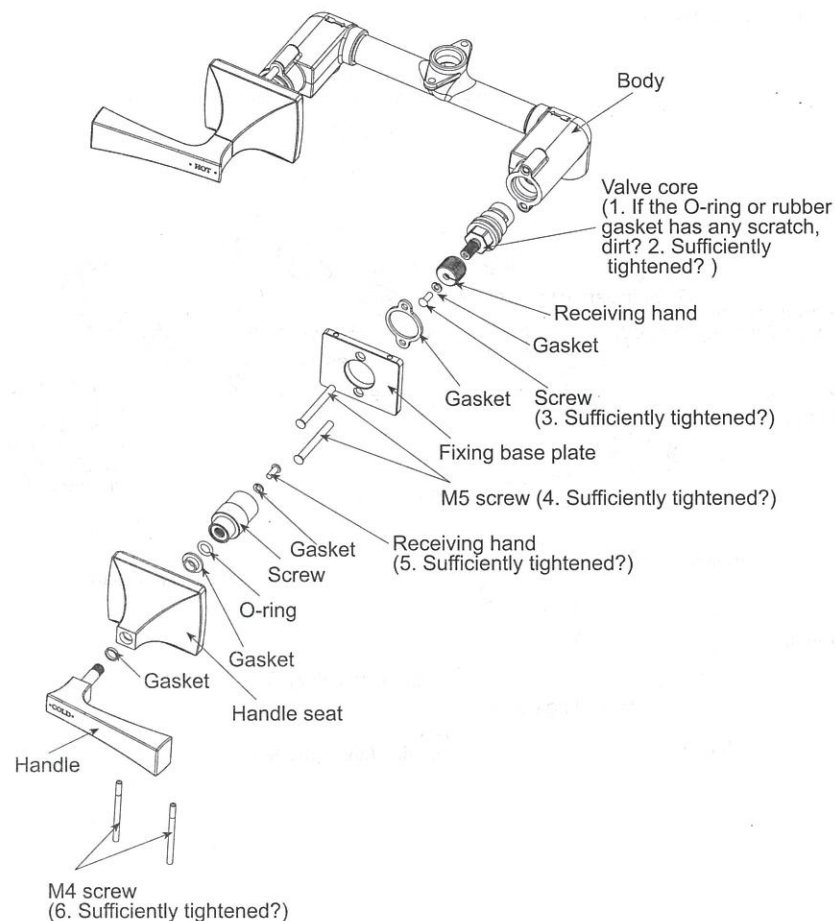


Removal and Inspection

Phenomenon	Inspecting items
The water flow is small	1
Water leakage	1、2
The handle sways	3、4、5、6

In case of any failure after installation, please remove according to the following main points.

DB245、DB245A series water nozzle

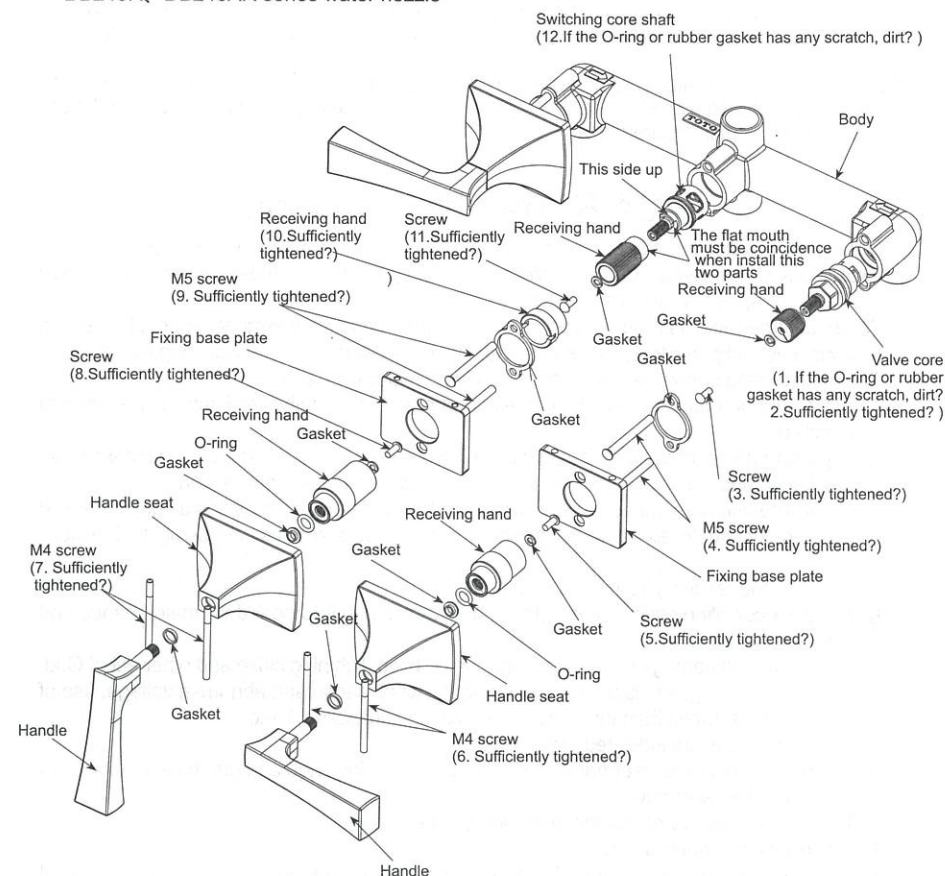


Removal and Inspection

Phenomenon	Inspecting items
The water flow is small	1
Water leakage	1、2、10、12
The handle sways	3、4、5、6、7、8、9、11
The switching is poor	12

In case of any failure after installation, please remove according to the following main points.

DB246R、DB246AR series water nozzle



Water nozzle guarantee

User	
Sales shop or installation shop	
Buying date	
Warranty period	The warranty period for the body and valve core is 5 years and the warranty period for the remaining components is 1 year.

- * If the contents in the above column are not recorded completely, the warranty will be deemed as invalid. Therefore, the users are requested to confirm the recorded contents when purchasing.
- * The warranty items in this warranty are limited to repair to the free repair items as restricted in it.
- * If any failure (water leakage, release) occurs to the product during the warranty period, the users are requested to show the warranty and purchase invoice to the sales shop or installation shop and make repair requirements.

Free Repair Regulations

1. In the circumstance that the users use correctly the product of our company according to the instructions on the instruction book, sticker, etc. during the warranty period, the company will provide free repair to any faulty product.
2. When any free repair is required due to any damage during the warranty period, please hold this warranty and purchase invoice to entrust the installation shop or sales shop for handling.
3. The repairs listed below are paid repairs during the warranty period.
 - ① Any failure and damage resulting from improper use or unauthorized improper repair and modification.
 - ② Any failure and damage due to failure to pay attention or mistake in installation construction.
 - ③ Any failure and damage due to removal for relocation, etc. after installation.
 - ④ Any failure and damage due to use of this product under such occasions as being beyond the range of use (for example, commodity for home use serves as commodity for business use.)
 - ⑤ Any damage resulting from sand or dirt, etc.
 - ⑥ Any poor condition such as dirty, plating rust, etc. due to improper daily maintenance and care.
 - ⑦ Any failure and damage due to fire, earthquake, flood, lightning strike and other act of God, public nuisance, gas nuisance (liquefied gas), salt nuisance and abnormal voltage, use of other power sources than that designated (voltage, frequency), etc.
 - ⑧ Other occasions not indicated in this warranty.
 - ⑨ The occasions where user name, sales shop, installation shop and purchase date are not filled out in this warranty.
 - ⑩ The occasion where no purchase invoice can be shown.
4. This warranty only applies to China.
5. This warranty will not be reissued in case of loss. Customers are requested to preserve it properly.

Conformity Certificate

Inspector: 

Applicable standard: GB18145-2014

GB/T 23447-2009(Apply to DBX125CF)

Q/DTJQ.007(Apply to DBS111)

Product model number: See the label on the packing box

Product name: See the label on the packing box

Production date: See the label on the packing box

Assembly factory: TOTO (Dalian) Co., Ltd.

Telephone: (0411) 87624383

Factory address: No. 17, Northeast No. 2 Street, Dalian Economic and

Technical Development Zone

TOTO (China) Co., Ltd.

National toll-free after-sale service telephone: 800-820-9787 (fixed telephone dialing)

400-820-9787 (mobile phone dialing)

TOTO

After installation, the instructions must be handed
to the customer for preservation.
